

HUDZY FOUR ARRIVAL  
(HUDZY, HUDZY4) 100CT19

HUDZY FOUR ARRIVAL  
(HUDZY, HUDZY4) 23054

AL-198 (FAA)

HOUSTON, TEXAS

HOUSTON APP CON  
120.05 379.1  
CXO ATIS  
118.325  
DWH ATIS  
128.375  
EFD ATIS  
135.575 269.9  
HOU D-ATIS  
124.6  
IAH D-ATIS  
124.05  
SGR ATIS \*  
118.125  
TME ATIS  
119.525

LUFKIN  
112.1 LFK  
Chan 58

SAWMILL  
113.75 SWB  
Chan 84 (Y)  
N31°58.39-W92°40.63'  
L-22, H-6

WAPPL  
N30°13.91'  
W94°19.84'  
**VERTICAL NAVIGATION  
PLANNING INFORMATION**

BRWCK  
N30°35.23'  
W93°42.36'

ALEXANDRIA  
116.1 AEX  
Chan 108  
N31°15.40-W92°30.06'  
L-21-22, H-6

HUMBLE  
116.6 IAH  
Chan 113

CLEVELAND MUNI

CLWSN  
N30°04.42'  
W94°55.13'

LIBERTY MUNI  
HUDZY  
N30°06.21'  
W94°48.53'  
**TURBOJETS:**  
Expect 14000 280K

LAKE CHARLES  
113.4 LCH  
Chan 81

SABINE PASS  
115.4 SBI  
Chan 101

TRINITY  
114.75 MHF  
Chan 94(Y)

DAVID WAYNE HOOKS MEML

GEORGE BUSH  
INTCNTL/HOUSTON

WEST HOUSTON

HOUSTON EXEC

BAYTOWN  
RWJ  
AIRPARK

LA PORTE MUNI

WILLIAM P  
HOBBY

ELLINGTON

SUGAR LAND RGNL

HOUSTON/SOUTHWEST

PEARLAND  
RGNL

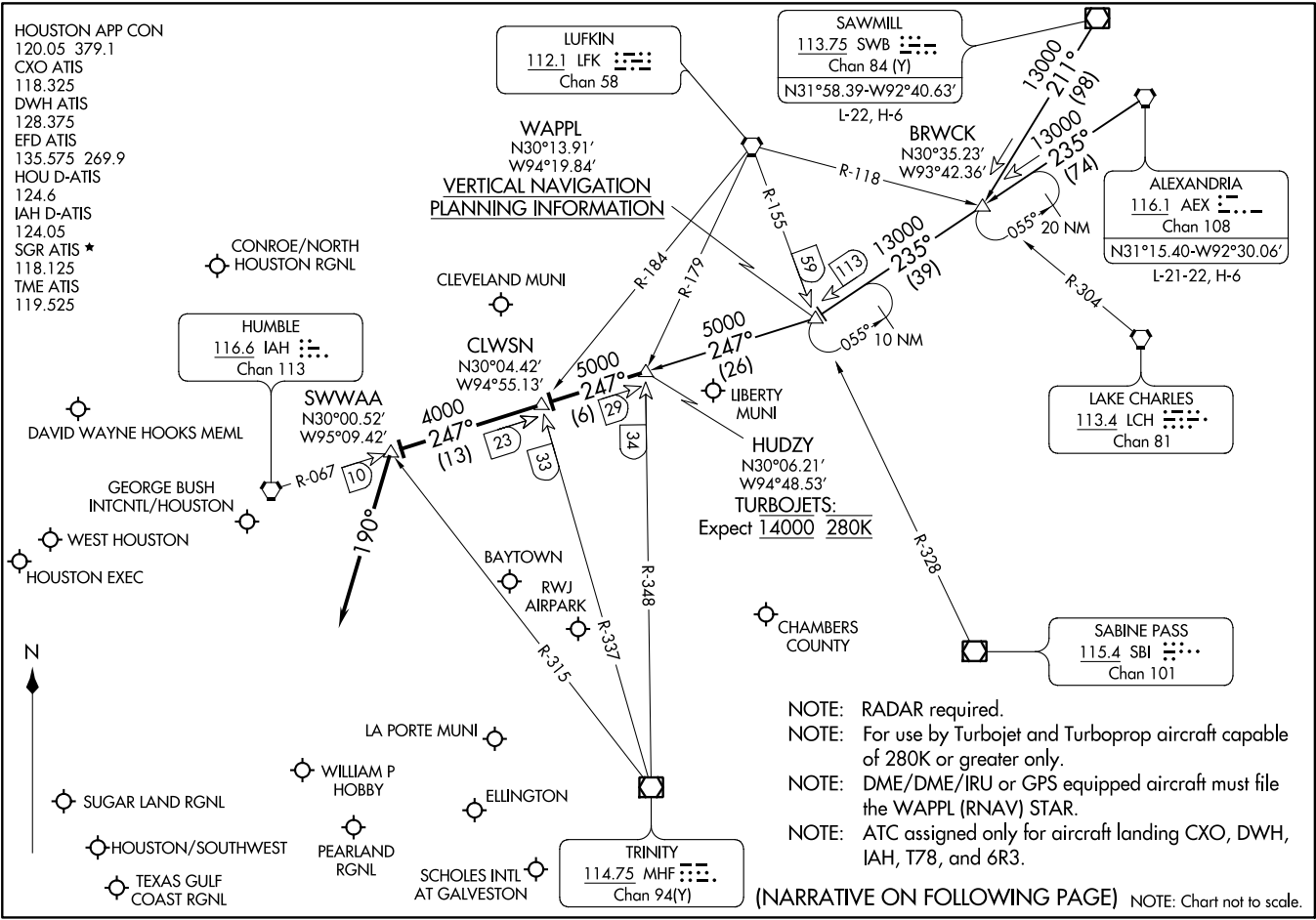
TEXAS GULF  
COAST RGNL

SCHOLES INTL  
AT GALVESTON

- NOTE: RADAR required.
- NOTE: For use by Turbojet and Turboprop aircraft capable of 280K or greater only.
- NOTE: DME/DME/IRU or GPS equipped aircraft must file the WAPPL (RNAV) STAR.
- NOTE: ATC assigned only for aircraft landing CXO, DWH, IAH, T78, and 6R3.

(NARRATIVE ON FOLLOWING PAGE) NOTE: Chart not to scale.

HOUSTON, TEXAS



ARRIVAL ROUTE DESCRIPTION

ALEXANDRIA TRANSITION (AEX.HUDZY4): From over AEX VORTAC on AEX R-235 to WAPPL, then on IAH R-067 to HUDZY. Thence. . . .

SAWMILL TRANSITION (SWB.HUDZY4): From over SWB VOR/DME on SWB R-211 to BRWCK, then on AEX R-235 to WAPPL, then on IAH R-067 to HUDZY. Thence. . . .

. . . .from over HUDZY on IAH R-067 to CLWSN, then on IAH R-067 to SWWAA, then on heading 190°. Expect RADAR vectors to final approach course.

SC-5, 22 FEB 2024 to 21 MAR 2024

SC-5, 22 FEB 2024 to 21 MAR 2024

OHIO FOUR ARRIVAL  
(OHIO.OHIO4) 22JUN17

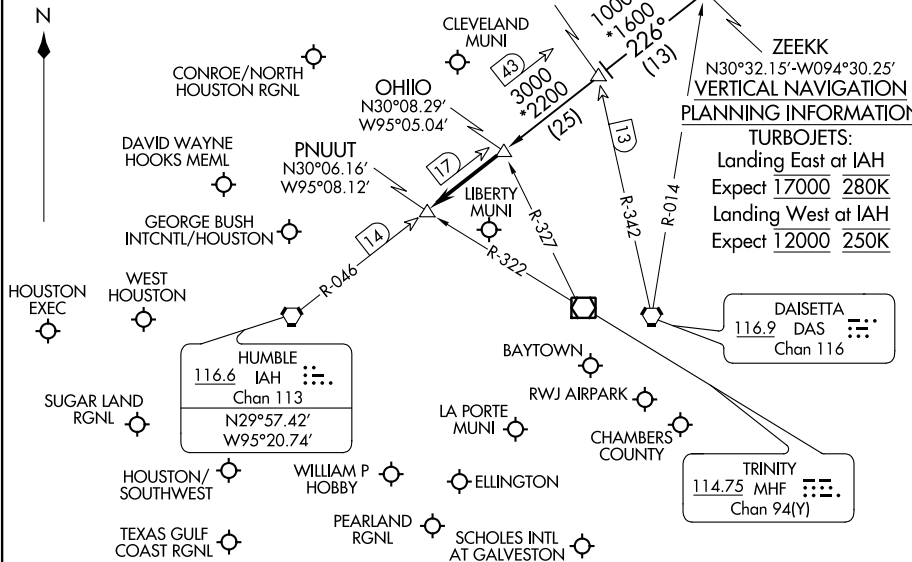
OHIO FOUR ARRIVAL  
(OHIO.OHIO4) 23222

HOUSTON APP CON  
120.05 379.1  
CXO ATIS  
118.325  
DWH ATIS  
128.375  
EFD ATIS  
135.575 269.9  
HOU D-ATIS  
124.6  
IAH D-ATIS  
124.05  
SGR ATIS\*  
118.125  
TME ATIS  
119.525

NOTE: DME/DME/IRU or GPS equipped turbojet aircraft landing IAH must file the GESNR/ZEEKK or DOOBI/SKNRD (RNAV) STAR.

NOTE: ATC assigned only for airports other than KIAH, KDWH and KCXO, T78 and 6R3.

NOTE: Chart not to scale.



LUFKIN  
112.1 LFK  
Chan 58  
N31°09.75'  
W94°43.00'

ALEXANDRIA  
116.1 AEX  
Chan 108  
N31°15.40'  
W92°30.06'

HUMBLES IAH  
116.6 IAH  
Chan 113  
N29°57.42'  
W95°20.74'

DAISETTA  
116.9 DAS  
Chan 116

TRINITY  
114.75 MHF  
Chan 94(Y)

**ARRIVAL ROUTE DESCRIPTION**

**ALEXANDRIA TRANSITION (AEX.OHIO4):**  
From over AEX VORTAC via AEX R-251 to LYMBO INT, then on IAH R-046 to OHIO INT. Thence . . .

**LUFKIN TRANSITION (LFK.OHIO4):**  
From over LFK VORTAC on LFK R-159 to ZEEKK INT, then on IAH R-046 to OHIO INT. Thence . . .

**GEORGE BUSH INT/CNTL AIRPORT /HOUSTON (IAH):**  
. . . from OHIO INT on IAH R-046 to PNUUT. Thence . . .  
**LANDING RUNWAYS 8L/R or 9:**  
. . . fly heading 265° for vectors to final approach course.

**LANDING ALL OTHER RUNWAYS:**  
. . . expect vectors to final approach course at or prior to PNUUT.

**FOR ALL OTHER AIRPORTS:**  
. . . from OHIO INT on IAH R-046 to PNUUT. Expect vectors to final approach course at or prior to PNUUT.

**PLANNING INFORMATION**

**TURBOJETS:**  
Landing East at IAH  
Expect 17000 280K  
Landing West at IAH  
Expect 12000 250K

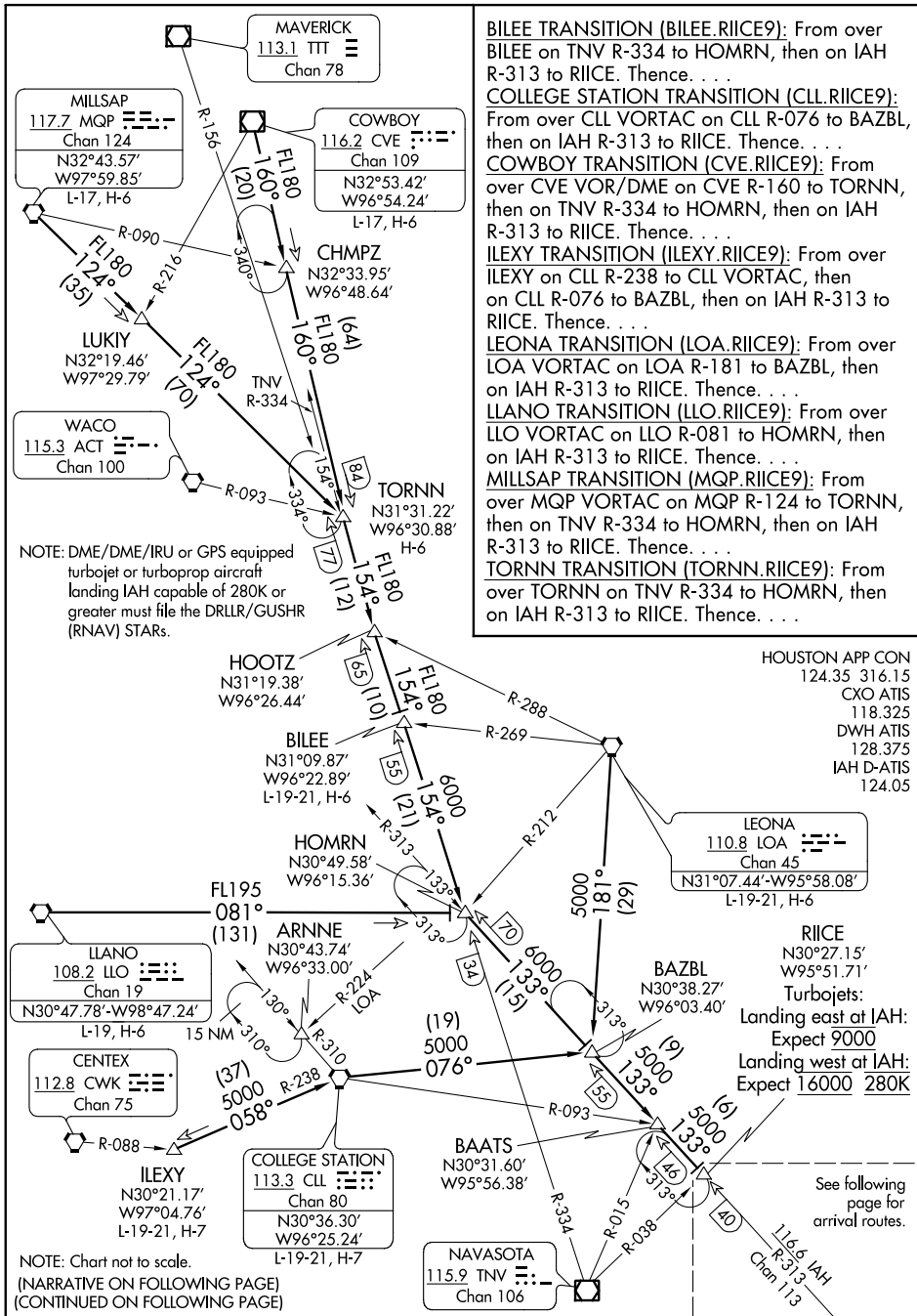
HOUSTON, TEXAS

HOUSTON, TEXAS

# RIICE NINE ARRIVAL

## Transition Routes

HOUSTON, TEXAS



SC-5, 22 FEB 2024 to 21 MAR 2024

SC-5, 22 FEB 2024 to 21 MAR 2024

# RIICE NINE ARRIVAL

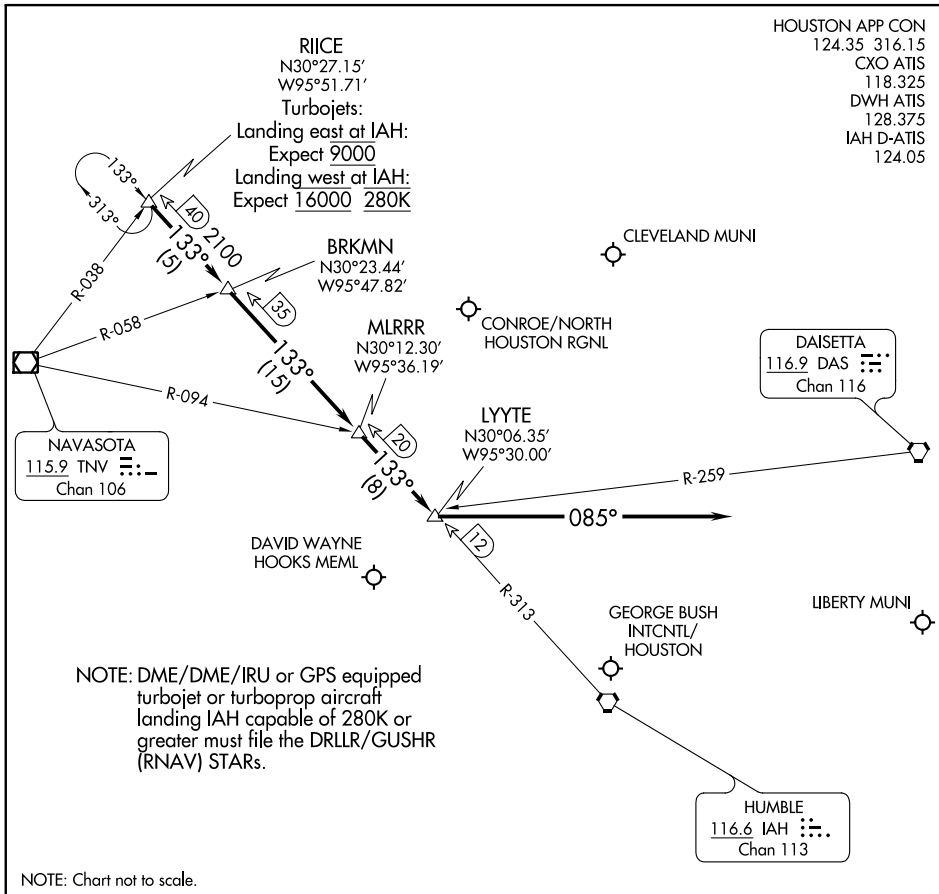
## Transition Routes

HOUSTON, TEXAS

# RIICE NINE ARRIVAL

## Arrival Routes

HOUSTON, TEXAS



SC-5, 22 FEB 2024 to 21 MAR 2024

SC-5, 22 FEB 2024 to 21 MAR 2024

### ARRIVAL ROUTE DESCRIPTION

**GEORGE BUSH INTCNL/HOUSTON (IAH):**

... From over RIICE on IAH R-313 to BRKMN, to MLRRR, to LYYTE.

**LANDING RUNWAY 26L/R or 27:**

... Fly heading 085° for vectors to final approach course.

**LANDING ALL OTHER RUNWAYS:**

... Expect vectors to final approach course at or prior to LYYTE.

**FOR ALL OTHER AIRPORTS:**

... From over RIICE on IAH R-313 to BRKMN, thence as depicted to LYYTE expect vectors to final approach course at or prior to LYYTE.

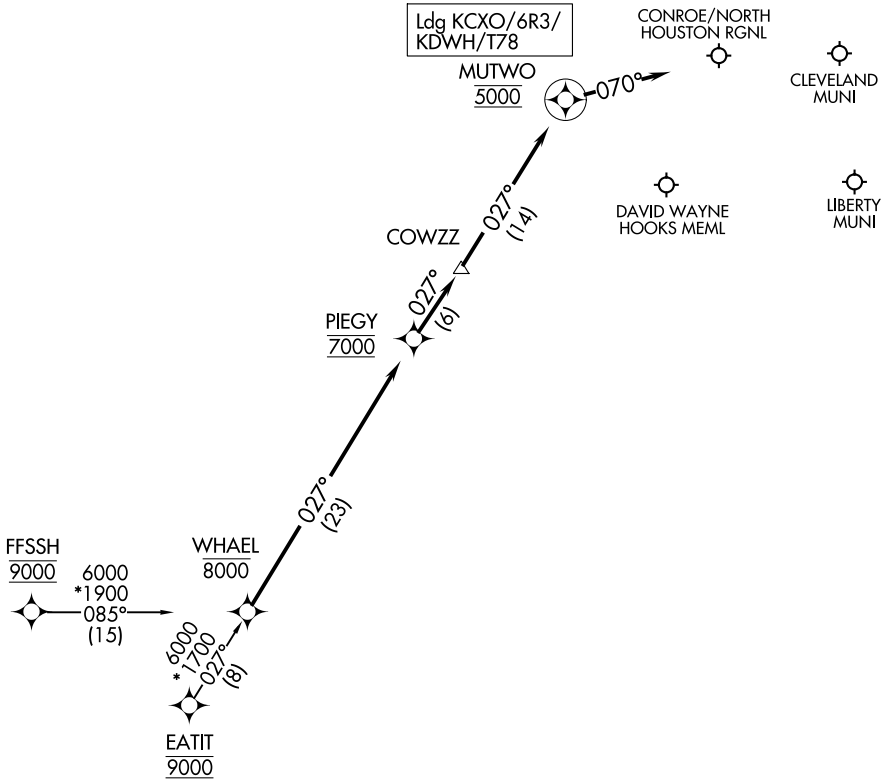
# PIEGY ONE ARRIVAL (RNAV)

HOUSTON, TEXAS

HOUSTON APP CON  
119.7 281.4  
CXO ATIS  
118.325  
DWH ATIS  
128.375

RNAV 1 - DME/DME/IRU or GPS.

RADAR required.



NOTE: Chart not to scale.

## ARRIVAL ROUTE DESCRIPTION

EATIT TRANSITION (EATIT.PIEGY1)  
FFSSH TRANSITION (FFSSH.PIEGY1)

LANDING ALL AIRPORTS: From WHAEL on track 027° to cross PIEGY at 7000, then on track 027° to COWZZ, then on track 027° to cross MUTWO at 5000, then on track 070°. Expect RADAR vectors to final approach course.