

LOC/DME I-HEW 110.5 Chan 42	APP CRS 168°	Rwy Idg TDZE 152 Apt Elev 152	6002
---	------------------------	---	-------------

LOC RWY 17R

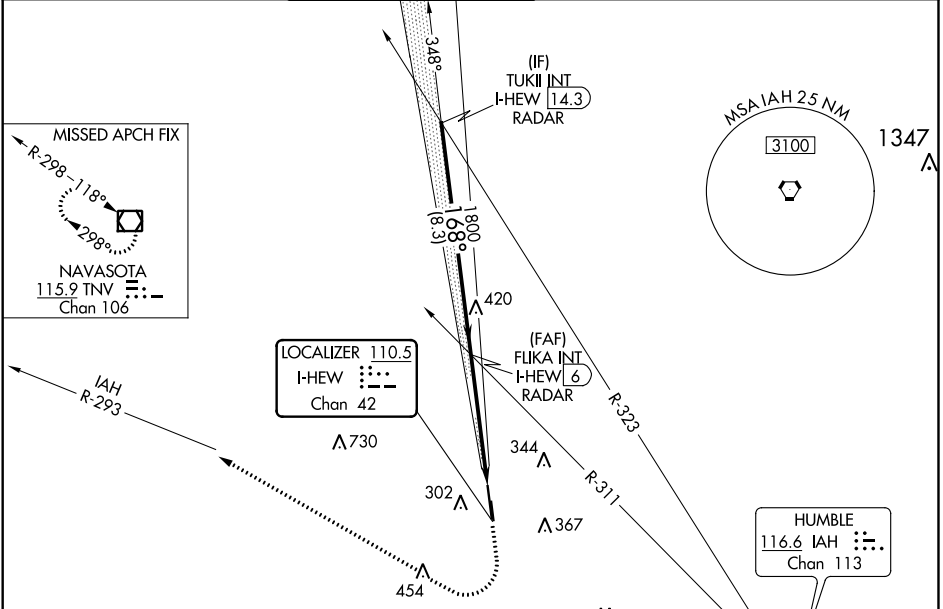
DAVID WAYNE HOOKS MEMORIAL (DWH)

RADAR required for procedure entry.

MISSED APPROACH: Climb to 1200 then climbing right turn to 2000 on heading 325° and IAH VORTAC R-293 to TNV VOR/DME and hold.

When local altimeter setting not received, use George Bush Intercontinental/Houston altimeter setting and increase all MDA 40 feet; increase S-LOC 17R Cats C/D visibility 1/8 mile. Circling NA to Rwy 17W and 35W. Rwy 17R helicopter visibility reduction below 3/4 SM NA.

ATIS 128.375	HOUSTON APP CON 119.7 281.4	HOOKS TOWER* 127.4 354.1 EAST 118.4 (CTAF) 354.1 WEST	GND CON 121.8 239.0	CLNC DEL 119.45	UNICOM 122.95
------------------------	---------------------------------------	---	-------------------------------	---------------------------	-------------------------



SC-5, 27 FEB 2020 to 26 MAR 2020

SC-5, 27 FEB 2020 to 26 MAR 2020

ELEV 152	D	TDZE 152
----------	----------	----------

168° 4.9 NM from FAF

WATER RWY 17W-35W 2530 X 100
Rwy 17L-35R 3500 X 35

HIRL Rwy 17R-35L
REIL Rwy 17R and 35L

FAF to MAP 4.9NM

Knots	60	90	120	150	180
Min:Sec	4:54	3:16	2:27	1:58	1:38

TUKII INT I-HEW 14.3 RADAR	1200	2000	IAH R-293	TNV
2000	Visual Segment - Obstacles.			
FLIKA INT I-HEW 6 RADAR	hdg 325°			
1800	I-HEW 1.1			
8.3 NM	4.9 NM			
CATEGORY	A	B	C	D
S-LOC 17R	640-1	488 (500-1)	640-1 3/8	488 (500-1 3/8)
C CIRCLING	640-1 488 (500-1)	660-1 508 (600-1)	680-1 1/2 528 (600-1 1/2)	760-2 608 (700-2)

APP CRS	Rwy Idg	6002
168°	TDZE	152
	Apt Elev	152

RNAV (GPS) RWY 17R

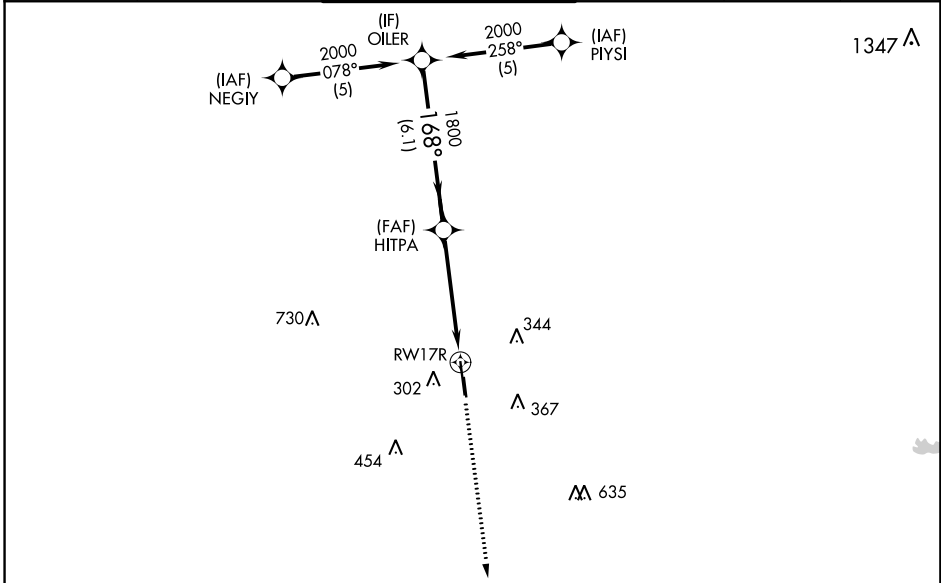
DAVID WAYNE HOOKS MEMORIAL (DWH)

RNP APCH.

When local altimeter setting not received, use George Bush Intercontinental/Houston altimeter setting and increase all MDA 40 feet and LNAV Cat C/D visibility 1/8 mile. Circling NA to Rwy 17W and 35W. Rwy 17R helicopter visibility reduction below 3/4 SM NA.

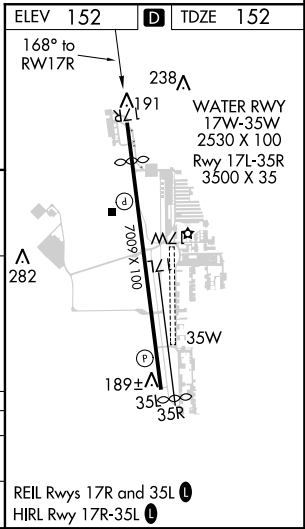
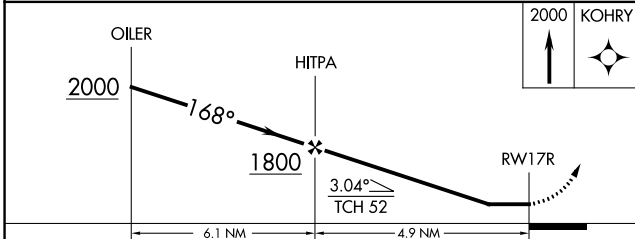
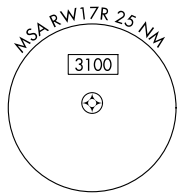
MISSED APPROACH: Climb to 2000 direct KOHRY and hold.

ATIS	HOUSTON APP CON	HOOKS TOWER*	GND CON	CLNC DEL	UNICOM
128.375	119.7 281.4	127.4 354.1 EAST 118.4 (CTAF) 0 354.1 WEST	121.8 239.0	119.45	122.95



SC-5, 27 FEB 2020 to 26 MAR 2020

SC-5, 27 FEB 2020 to 26 MAR 2020



CATEGORY	A	B	C	D
LNAV MDA	640-1	488 (500-1)	640-1 3/8	488 (500-1 3/8)
CIRCLING	640-1 488 (500-1)	660-1 508 (600-1)	680-1 1/2 528 (600-1 1/2)	760-2 608 (700-2)

WAAS CH 45603 W35A	APP CRS 348°	Rwy ldg 6700 TDZE 152 Apt Elev 152
--	------------------------	---

RNAV (GPS) RWY 35L

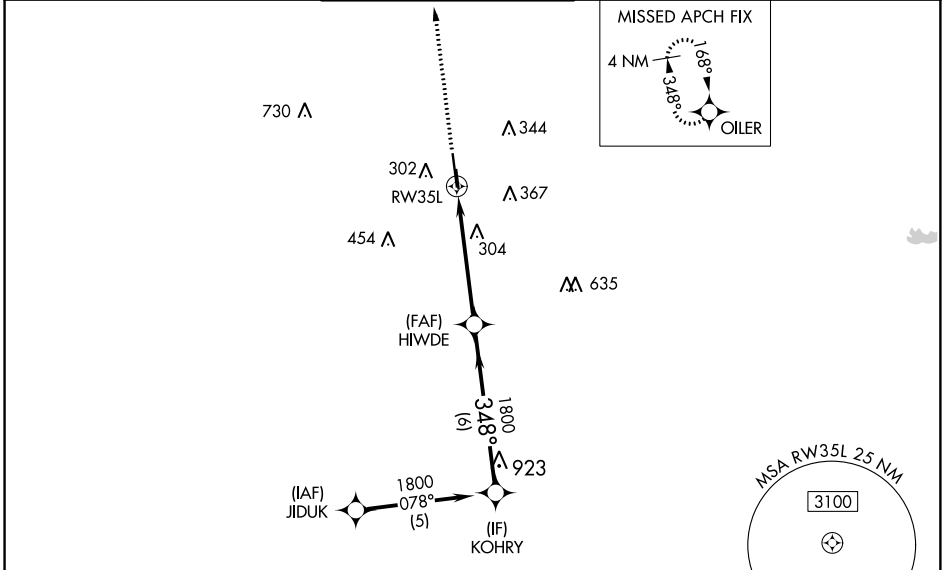
DAVID WAYNE HOOKS MEMORIAL (DWH)

RNP APCH.

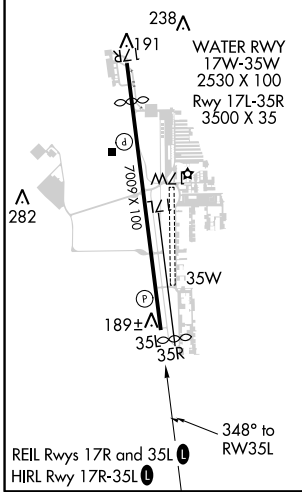
⚠ Baro-VNAV and VDP NA when using George Bush Intercontinental/Houston altimeter setting. For uncompensated Baro-VNAV systems, LNAV/VNAV NA below -4°C (25°F) or above 54°C (130°F). When local altimeter setting not received, use George Bush Intercontinental/Houston altimeter setting and increase all DA 36 feet and all MDA 40 feet, increase LPV and LNAV/VNAV visibility all Cats 1/8 mile, LNAV visibility Cats C/D 1/4 mile. Rwy 35L helicopter visibility reduction below 3/4 SM NA. Circling NA to Rwy 17W and 35W.

MISSED APPROACH:
Climb to 2000 direct OILER and hold.

ATIS 128.375	HOUSTON APP CON 119.7 281.4	HOOKS TOWER* 127.4 354.1 (EAST) 118.4 (CTAF) 354.1 (WEST)	GND CON 121.8 239.0	CLNC DEL 119.45	UNICOM 122.95
------------------------	---------------------------------------	---	-------------------------------	---------------------------	-------------------------



ELEV 152	D	TDZE 152
----------	----------	----------



2000	OILER	VGSi and RNAV glidepath not coincident (VGSi Angle 3.00/TCH 41).			
*LNAV only.		*1.2 NM to RW35L		HIWDE 1800	KOHRY 1800
RW35L		348°		1800	GP 3.00° TCH 45
1.2 NM		3.8 NM		6 NM	
CATEGORY	A	B	C	D	
LPV DA	451-1		299 (300-1)		
LNAV/ VNAV DA	552-1 3/8		400 (400-1 1/8)		
LNAV MDA	560-1		408 (500-1)		560-1 1/8 408 (500-1 1/8)
C CIRCLING	640-1 488 (500-1)	660-1 508 (600-1)	680-1 1/2 528 (600-1 1/2)	760-2 608 (700-2)	

SC-5, 27 FEB 2020 to 26 MAR 2020

SC-5, 27 FEB 2020 to 26 MAR 2020