

LOC I-DQH 108.7	APP CRS 040°	Rwy Idg 6000 TDZE 253 Apt Elev 257
---------------------------	------------------------	--

ILS or LOC RWY 4

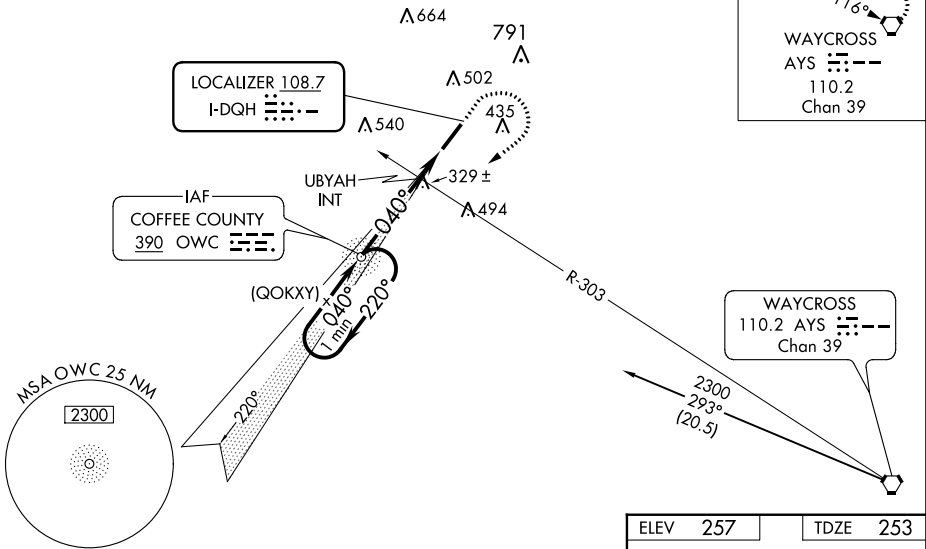
DOUGLAS MUNI (DQH)

ADF Required. For inoperative MALS, increase S-LOC 4 Cat C and D visibility to 1 3/8 mile. When local altimeter setting not received, use Alma altimeter setting and increase all DA 51 feet and all MDA 60 feet; increase Circling Cat C visibility 1/4 mile; increase UBYAH Fix minimums S-LOC 4 Cat C and D visibility 1/8 mile and Circling Cat C visibility 1/4 mile.

MALS
MISSED APPROACH: Climb to 900 then climbing right turn to 2000 direct OWC NDB and hold.

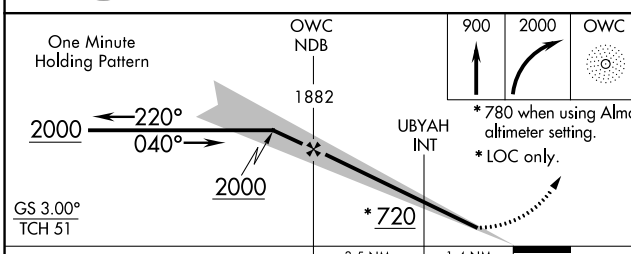
AWOS-3 119.075	JACKSONVILLE CENTER 127.575 269.025	GCO 121.725	UNICOM 122.8 (CTAF)
--------------------------	---	-----------------------	-------------------------------

ADF REQUIRED

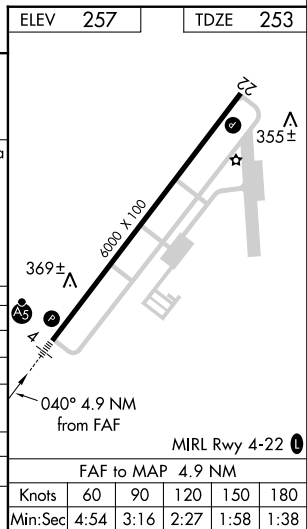


SE-4, 01 MAR 2018 to 29 MAR 2018

SE-4, 01 MAR 2018 to 29 MAR 2018



CATEGORY	A	B	C	D
S-ILS 4	453-1/2 200 (200-1/2)			
S-LOC 4	720-1/2	467 (500-1/2)	720-1	467 (500-1)
CIRCLING	720-1	463 (500-1)	800-1 1/2 543 (600-1 1/2)	820-2 563 (600-2)
UBYAH FIX MINIMUMS (DUAL VOR RECEIVERS REQUIRED)				
S-LOC 4	580-1/2 327 (400-1/2)			
CIRCLING	680-1 423 (500-1)	720-1 463 (500-1)	800-1 1/2 543 (600-1 1/2)	820-2 563 (600-2)



FAF to MAP 4.9 NM	Knots	60	90	120	150	180
	Min:Sec	4:54	3:16	2:27	1:58	1:38

WAAS CH 86725 W22A	APP CRS 220°	Rwy Idg TDZE Apt Elev	6000 257 257
--	------------------------	-----------------------------	---

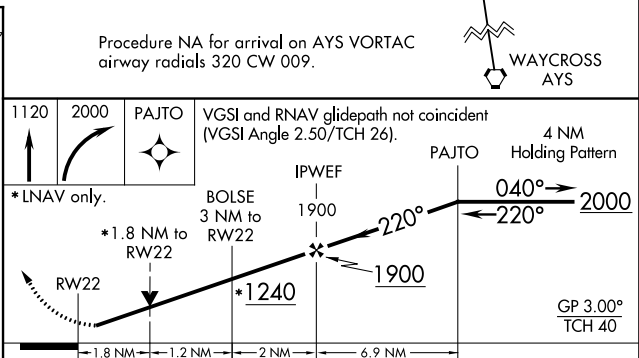
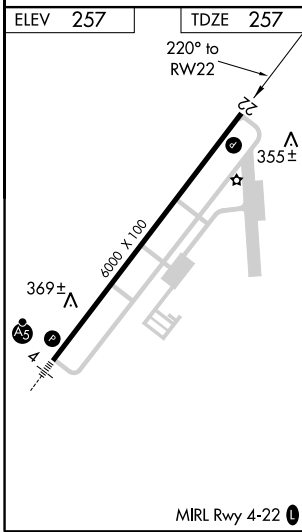
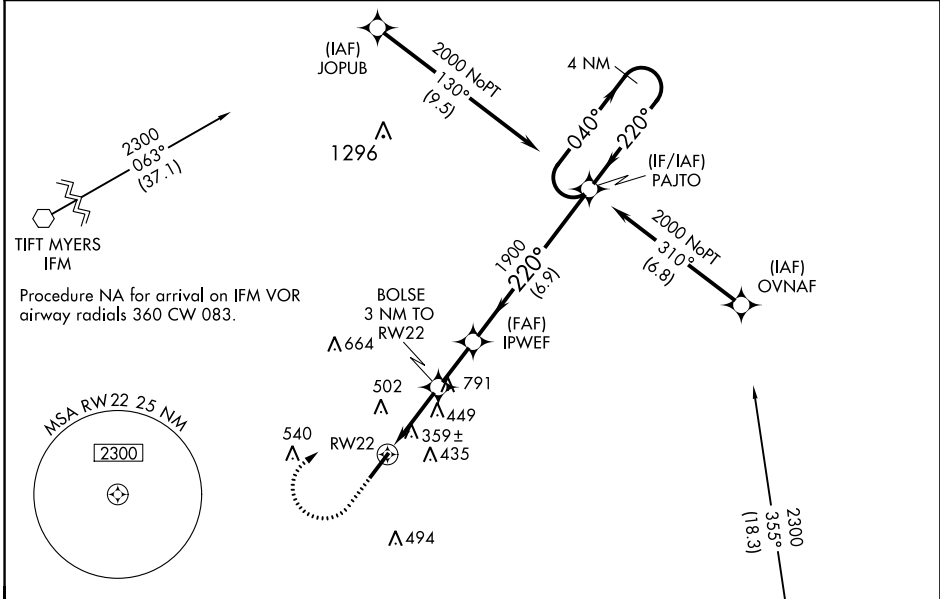
RNAV (GPS) RWY 22

DOUGLAS MUNI (DQH)

⚠ Baro-VNAV NA when using Alma altimeter setting. For uncompensated Baro-VNAV systems, LNAV/VNAV NA below -15°C (5°F) or above 42°C (107°F). DME/DME RNP-0.3 NA. Visibility reduction by helicopters NA. VDP NA with Alma altimeter setting. When local altimeter setting not received, use Alma altimeter setting and increase all DA 51 feet and all MDA 60 feet; increase LPV all Cats and LNAV/VNAV all Cats visibility 1/8 mile, LNAV Cat C and D and Circling Cat C visibility 1/4 mile.

MISSED APPROACH: Climb to 1120 then climbing right turn to 2000 direct PAJTO and hold.

AWOS-3 119.075	JACKSONVILLE CENTER 127.575 269.025	GCO 121.725	UNICOM 122.8 (CTAF) 0
--------------------------	---	-----------------------	---------------------------------



CATEGORY	A	B	C	D
LPV DA	507-7/8		250 (300-7/8)	
LNAV/VNAV DA	658-1 1/8		401 (500-1 1/8)	
LNAV MDA	760-1	503 (600-1)	760-1 3/8	503 (600-1 3/8)
CIRCLING	760-1	503 (600-1)	800-1 1/2	820-2
			543 (600-1 1/2)	563 (600-2)

SE-4, 01 MAR 2018 to 29 MAR 2018

SE-4, 01 MAR 2018 to 29 MAR 2018

WAAS CH 93824 W04A	APP CRS 040°	Rwy Idg TDZE Apt Elev	6000 253 257
--	------------------------	-----------------------------	---

RNAV (GPS) RWY 4

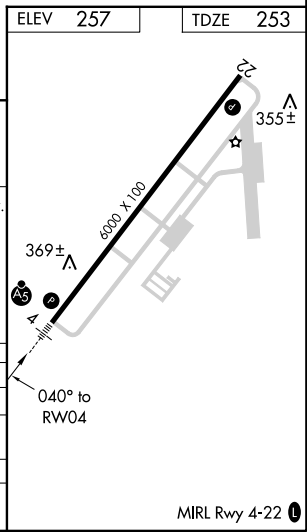
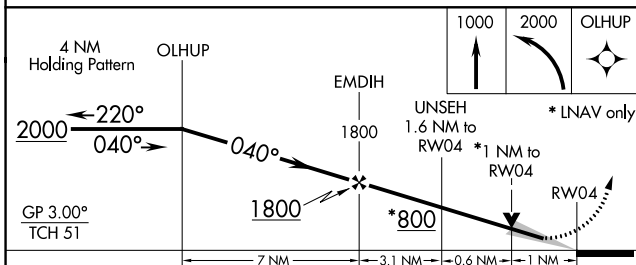
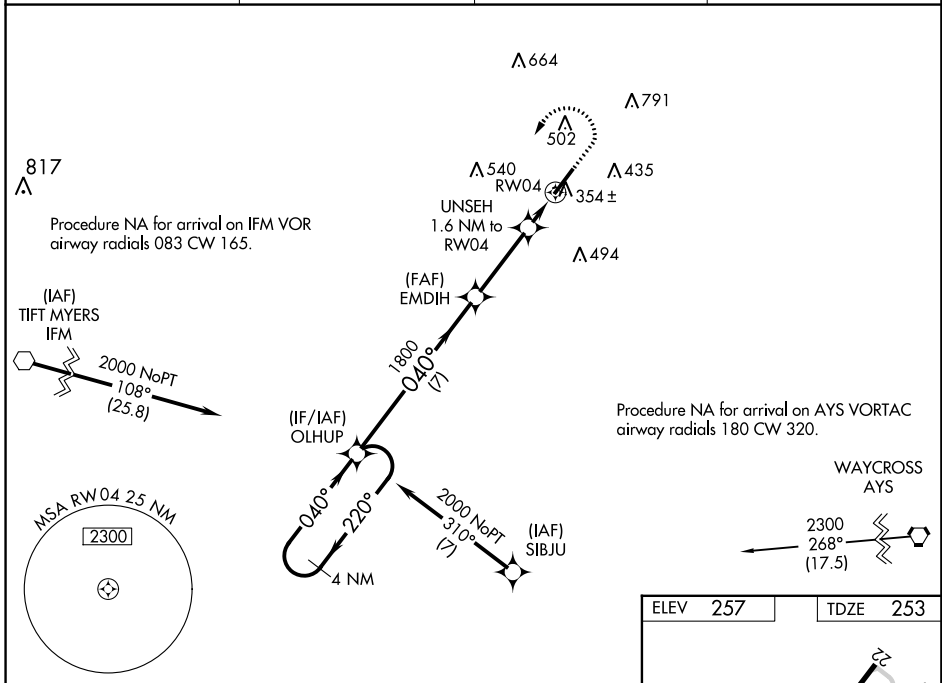
DOUGLAS MUNI (DQH)

⚠ Baro-VNAV NA when using Altimeter setting. For uncompensated Baro-VNAV systems, LNAV/VNAV NA below -15°C (5°F) or above 42°C (107°F). DME/DME RNP-0.3 NA. VDP NA with Altimeter setting. When local altimeter setting not received, use Altimeter setting and increase all DA 51 feet and all MDA 60 feet; and increase LNAV/VNAV all Cats, LNAV Cats C and D and Circling Cat C visibility ¼ mile. For inoperative MALSR increase LNAV/VNAV all Cats visibility to ¾ mile and LNAV Cat C and D visibility to 1 mile.

MALSR
AS

MISSED APPROACH:
Climb to 1000 then climbing left turn to 2000 direct OLHUP and hold.

AWOS-3 119.075	JACKSONVILLE CENTER 127.575 269.025	GCO 121.725	UNICOM 122.8 (CTAF)
--------------------------	---	-----------------------	-------------------------------



CATEGORY	A	B	C	D
LPV DA		453-½	200 (200-½)	
LNAV/VNAV DA		538-½	285 (300-½)	
LNAV MDA	620-½	367 (400-½)	620-5/8	367 (400-5/8)
CIRCLING	680-1 423 (500-1)	720-1 463 (500-1)	800-1½ 543 (600-1½)	820-2 563 (600-2)

SE-4, 01 MAR 2018 to 29 MAR 2018

SE-4, 01 MAR 2018 to 29 MAR 2018