

| | | | |
|--|------------------------|---|-------------|
| WAAS CH 65607 W16A | APP CRS 159° | Rwy Idg TDZE 789 Apt Elev 789 | 5100 |
|--|------------------------|---|-------------|

RNAV (GPS) RWY 16

CARROLL COUNTY RGNL/JACK B POAGE FLD (DMW)

▼ Baro-VNAV NA when using Frederick altimeter setting. For uncompensated Baro-VNAV systems, LNAV/VNAV NA below -16°C (4°F) or above 54°C (130°F). When local altimeter setting not received, use Frederick altimeter setting and increase LPV DA to 1199 feet, LNAV/VNAV DA to 1307 feet, and all MDAs 120 feet; increase LPV all Cats visibility 1/8 SM, LNAV Cat C visibility 3/8 SM, and Circling Cat C visibility 1/2 SM. When VGSI inop, Straight-in/Circling Rwy 16 procedure NA at night. DME/DME RNP-0.3 NA. Visibility reduction by helicopters NA.

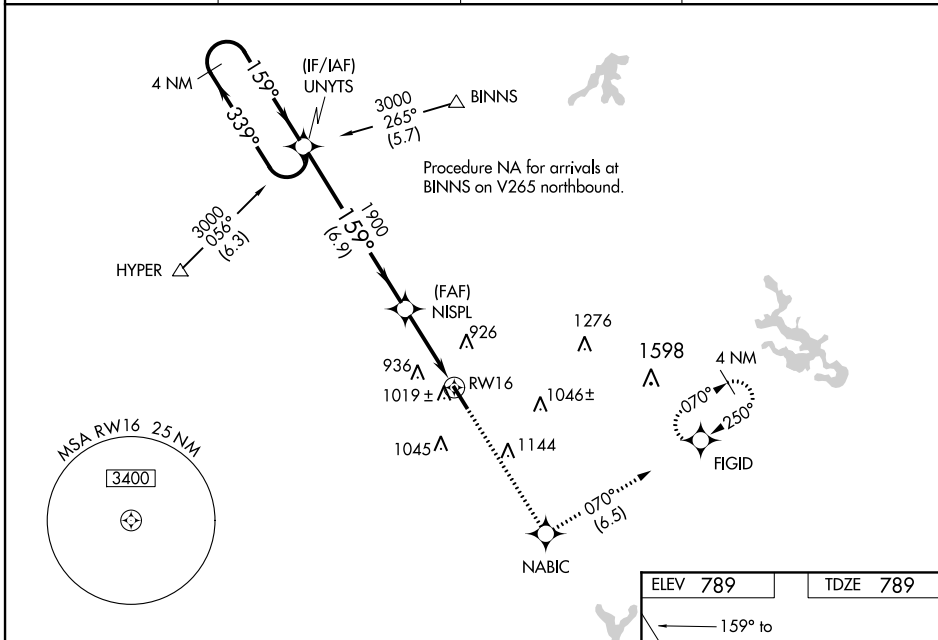
MISSED APPROACH:
Climb to 2200 direct NABIC then climbing left turn to 3000 on track 070° to FIGID and hold.

AWOS-3
121.25

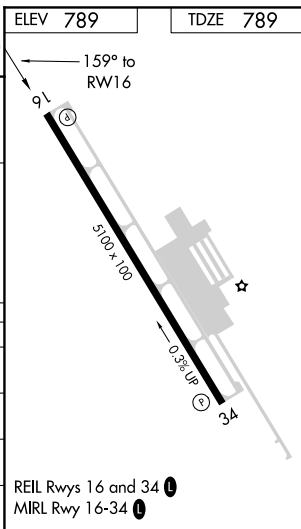
POTOMAC APP CON
125.525 291.625

GCO
121.725

UNICOM
122.7 (CTAF) 0



| | | | | |
|----------------------|----------------------------|-----------------------|-------------------------------|------|
| 4 NM Holding Pattern | UNYTS | | | |
| | 3000 ← 339° | 159° → | 1590 | 1900 |
| GP 3.00° TCH 45 | NISPL | | | |
| | 6.9 NM | 3.4 NM | RW16 | |
| CATEGORY | A | B | C | D |
| LPV DA | 1081-1 292 (300-1) | | | NA |
| LNAV/VNAV DA | 1189-1 3/8 400 (400-1 3/8) | | | NA |
| LNAV MDA | 1280-1 | 491 (500-1) | 1280-1 3/8 491 (500-1 3/8) | NA |
| CIRCLING | 1320-1 531 (600-1) | 1400-1 611 (700-1) | 1500-2 711 (800-2) | NA |



NE-3, 19 MAY 2022 to 16 JUN 2022

NE-3, 19 MAY 2022 to 16 JUN 2022

WESTMINSTER, MARYLAND

AL-5533 (FAA)

21140

| | | |
|--|------------------------|---|
| WAAS CH 82117 W34A | APP CRS 339° | Rwy Idg 5100 TDZE 788 Apt Elev 789 |
|--|------------------------|---|

RNAV (GPS) RWY 34

CARROLL COUNTY RGNL/JACK B POAGE FLD (DMW)

RNP APCH

▼ For uncompensated Baro-VNAV systems, LNAV/VNAV NA below -16°C (4°F) or above 54°C (130°F).

▲

MISSED APPROACH: Climb to 3000 direct UNYTS and hold

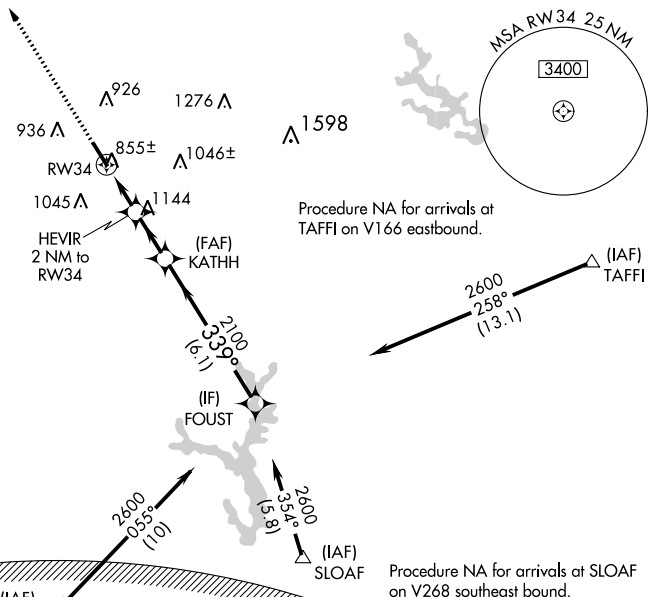
AWOS-3
121.25

POTOMAC APP CON
125.525 291.625

GCO
121.725

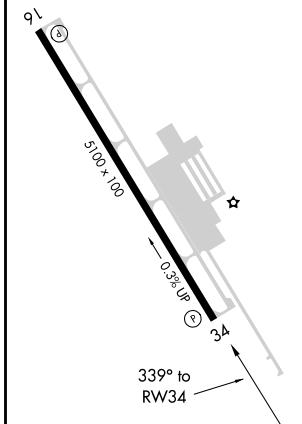
UNICOM
122.7 (CTAF) 0

MISSED APCH FIX

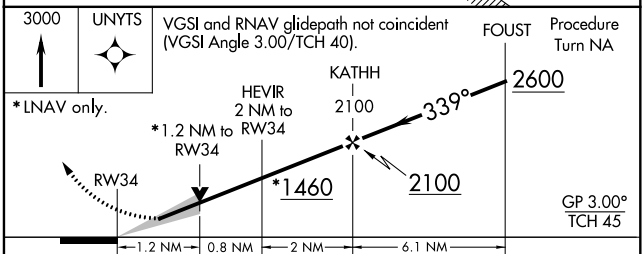


| | |
|----------|----------|
| ELEV 789 | TDZE 788 |
|----------|----------|

WASHINGTON DC METROPOLITAN SFRA
**WARNING -- WASHINGTON DC SFRA.
 CTC POTOMAC APP CON**



REIL Rwy 16 and 34 **0**
 MIRL Rwy 16-34 **0**



| CATEGORY | A | B | C | D |
|--------------|-----------------------|-----------------------|-----------------------|----|
| LPV DA | 988-1 200 (200-1) | | | NA |
| LNAV/VNAV DA | 1105-1¼ 317 (400-1¼) | | | NA |
| LNAV MDA | 1180-1 392 (400-1) | | | NA |
| CIRCLING | 1320-1 531 (600-1) | 1400-1 611 (700-1) | 1500-2 711 (800-2) | NA |

WESTMINSTER, MARYLAND
Amdt 1C 20MAY21

CARROLL COUNTY RGNL/JACK B POAGE FLD (DMW)
39°36'N-77°00'W

RNAV (GPS) RWY 34

NE-3, 19 MAY 2022 to 16 JUN 2022

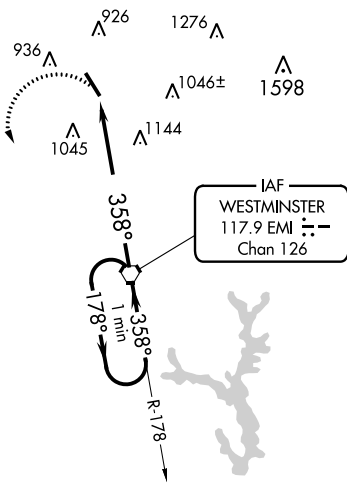
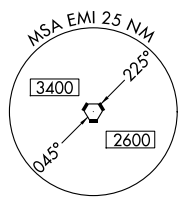
NE-3, 19 MAY 2022 to 16 JUN 2022

| | | | |
|---|------------------------|-----------------------------|---|
| VORTAC EMI 117.9 Chan 126 | APP CRS 358° | Rwy Idg TDZE Apt Elev | 5100 788 789 |
|---|------------------------|-----------------------------|---|

VOR RWY 34

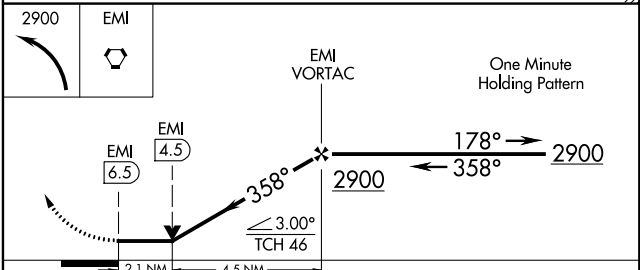
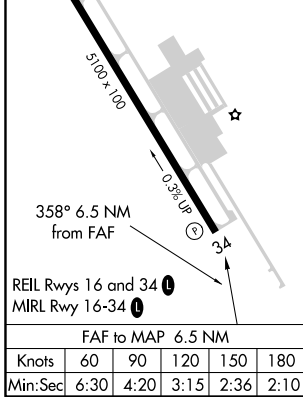
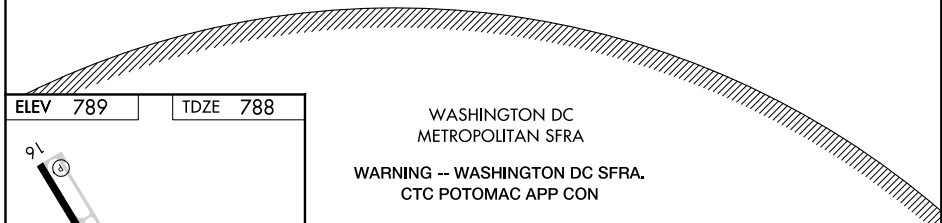
CARROLL COUNTY RGNL/JACK B POAGE FLD (DMW)

| | | | |
|-------------------------|---|---|---------------------------------|
| NA | | MISSED APPROACH: Climbing left turn to 2900 direct EMI VORTAC and hold. | |
| AWOS-3 121.25 | POTOMAC APP CON 125.525 291.625 | GCO 121.725 | UNICOM 122.7 (CTAF) 0 |



NE-3, 19 MAY 2022 to 16 JUN 2022

NE-3, 19 MAY 2022 to 16 JUN 2022



| CATEGORY | A | B | C | D |
|----------|--------|-------------|-----------------------|----|
| S-34 | 1480-1 | 692 (700-1) | 1480-2 692 (700-2) | NA |
| CIRCLING | 1480-1 | 691 (700-1) | 1500-2 711 (800-2) | NA |

VOR RWY 34