

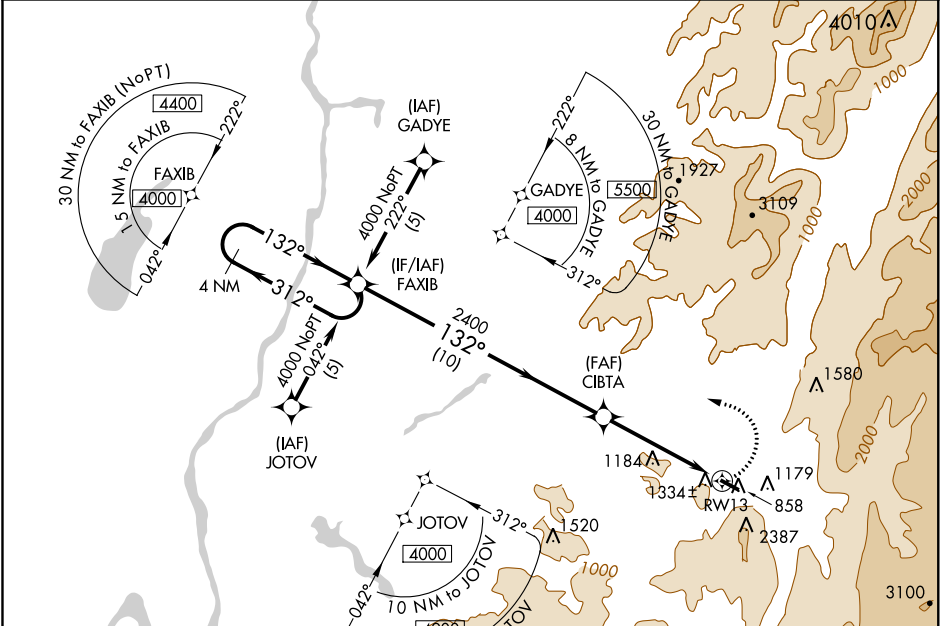
APP CRS	Rwy Idg	3704
132°	TDZE	819
	Apt Elev	827

RNAV (GPS) RWY 13

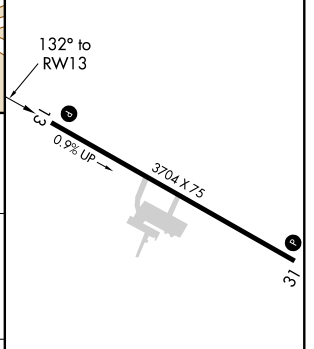
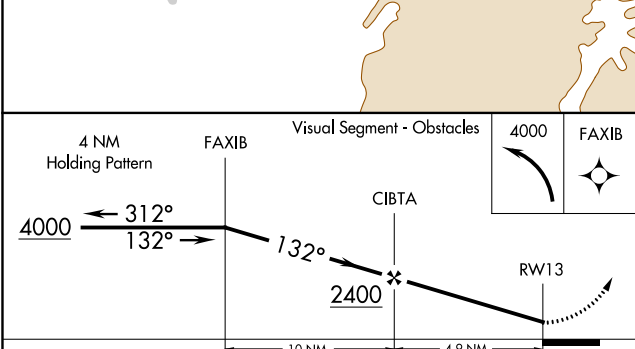
WILLIAM H MORSE STATE (DDH)

<p>▽ DME/DME RNP-0.3 NA. Helicopter visibility reduction below 1 SM NA. ▲ NA Procedure NA at night. Circling NA southwest of Rwy 13-31. When local altimeter setting not received use North Adams, MA altimeter setting and increase all MDA 60 feet.</p>	<p>MISSED APPROACH: Climbing left turn to 4000 direct FAXIB and hold.</p>
---	---

ASOS 135.925	ALBANY APP CON 132.825 307.2	GCO 121.725	UNICOM 122.8 (CTAF) 0
------------------------	--	-----------------------	---------------------------------



ELEV 827	TDZE 819
----------	----------



CATEGORY	A	B	C	D
LNVA MDA	2280-1 ¼ 1461 (1500-1 ¼)	2280-1 ½ 1461 (1500-1 ½)	2280-3 1461 (1500-3)	NA
CIRCLING	2280-1 ¼ 1453 (1500-1 ¼)	2280-1 ½ 1453 (1500-1 ½)	2280-3 1453 (1500-3)	NA

REIL Rwy 13 and 31 **0**
 MIRL Rwy 13-31 **0**

NE-1, 07 DEC 2017 to 04 JAN 2018

NE-1, 07 DEC 2017 to 04 JAN 2018

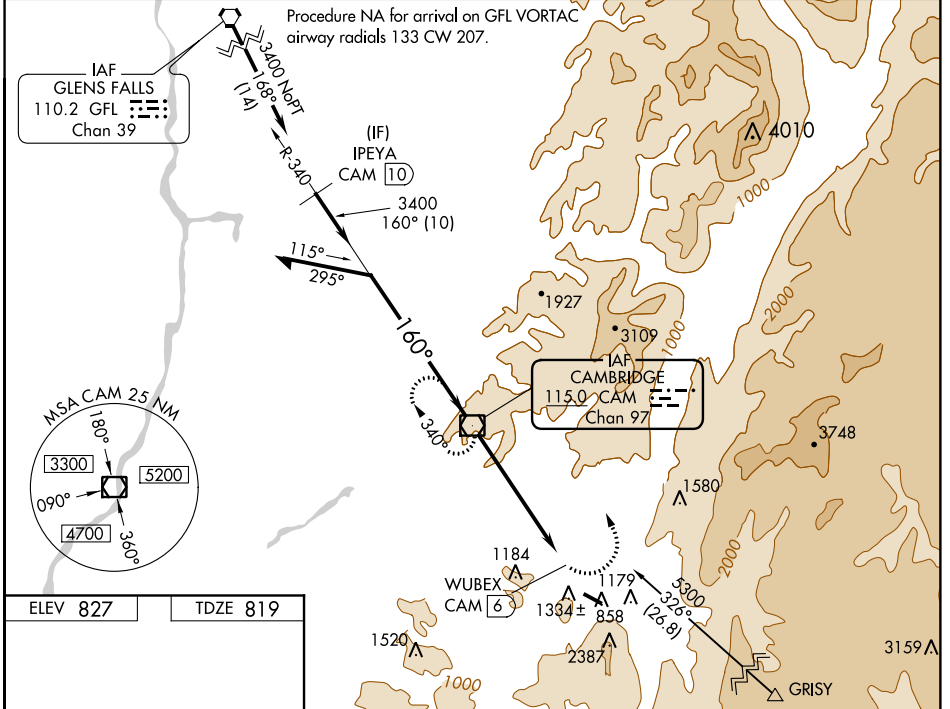
VOR/DME CAM 115.0 Chan 97	APP CRS 160°	Rwy Idg TDZE Apt Elev	3704 819 827
---	------------------------	-----------------------------	---

VOR RWY 13

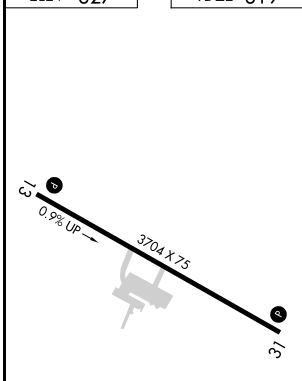
WILLIAM H MORSE STATE (DDH)

<p>NA</p> <p>Helicopter visibility reduction below 1 SM NA. When VGSI inop, Circling Rwy 31 NA at night. When local altimeter setting not received, use North Adams altimeter setting and increase all MDA 60 feet. Circling NA southwest of Rwy 13-31. Procedure NA at night.</p>	<p>MISSED APPROACH: Climbing left turn to 4000 direct CAM VOR/DME and hold.</p>
	<p>-17°C</p>

ASOS 135.925	ALBANY APP CON 132.825 307.2	GCO 121.725	UNICOM 122.8 (CTAF)
------------------------	--	-----------------------	-------------------------------



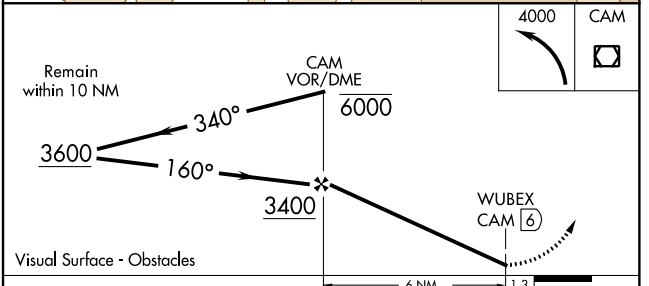
ELEV 827	TDZE 819
----------	----------



REIL Rwy 13 and 31
MIRL Rwy 13-31

FAF to MAP 6 NM

Knots	60	90	120	150	180
Min:Sec	6:00	4:00	3:00	2:24	2:00



CATEGORY	A	B	C	D
S-13	2240-1½	1421 (1500-1½)	2240-3 1421 (1500-3)	NA
CIRCLING	2240-1½	1413 (1500-1½)	2240-3 1413 (1500-3)	NA

NE-1, 07 DEC 2017 to 04 JAN 2018

NE-1, 07 DEC 2017 to 04 JAN 2018