

WAAS CH 72813 W26A	APP CRS 255°	Rwy Idg TDZE Apt Elev	6402 1918 1930
--	------------------------	-----------------------------	---

RNAV (GPS) RWY 26

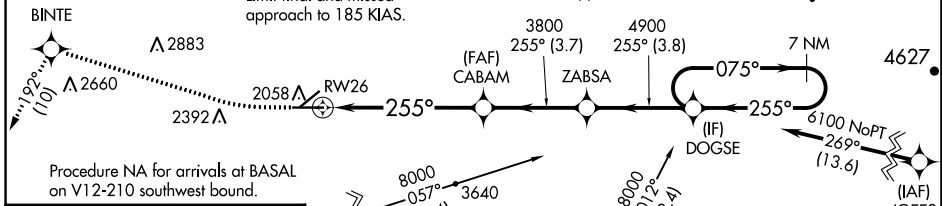
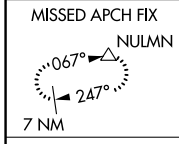
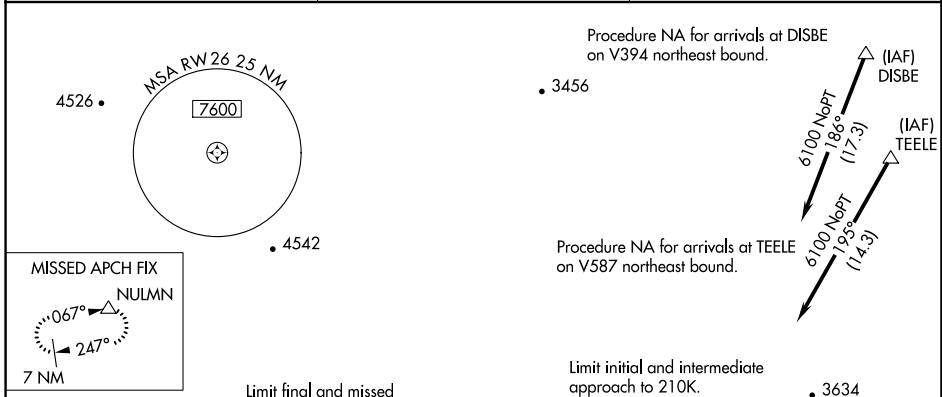
BARSTOW-DAGGETT (DAG)

RNP APCH.

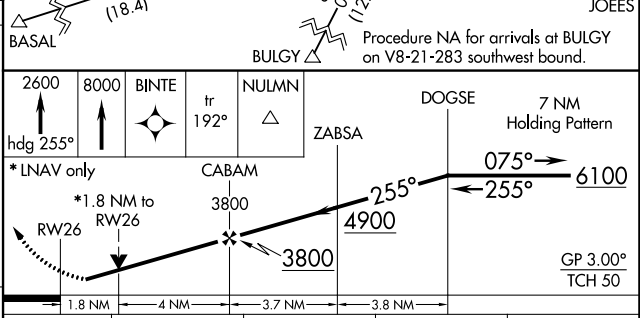
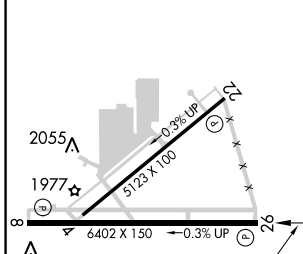
⚠ For uncompensated Baro-VNAV systems, LNAV/VNAV NA below -4°C or above 54°C. Circling NA for Cat D south of Rwy 8-26. Rwy 26 helicopter visibility reduction below 3/4 SM NA.
#Missed approach requires a minimum climb of 220 feet per NM to 8000.

MISSED APPROACH: Climb to 2600 on heading 255° then climb to 8000 direct BINTE and on track 192° to NULMN and hold, continue climb-in-hold to 8000.

ASOS 132.175	LOS ANGELES CENTER 132.5 284.7	UNICOM 123.0 (CTAF) 0
------------------------	--	---------------------------------



ELEV 1930	TDZE 1918
-----------	-----------



CATEGORY	A	B	C	D
LPV DA#	2222-1		304 (300-1)	
LPV DA	2343-1 3/8		425 (500-1 3/8)	
LNAV/VNAV DA	2389-1 5/8		471 (500-1 3/8)	
LNAV MDA	2540-1	622 (700-1)	2540-1 3/4	622 (700-1 3/4)
C CIRCLING	2640-1 710 (800-1)	2860-1 1/4 930 (1000-1 1/4)	3500-3 1570 (1600-3)	

SW-3, 02 DEC 2021 to 30 DEC 2021

SW-3, 02 DEC 2021 to 30 DEC 2021

VORTAC DAG	APP CRS	Rwy Idg	5123
113.2	224°	TDZE	1918
Chan 79		Apt Elev	1930

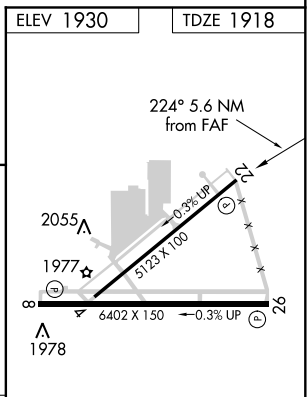
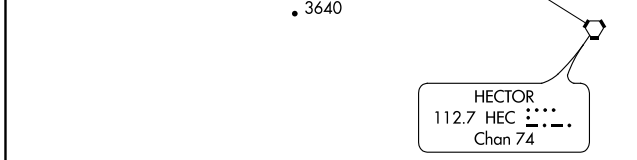
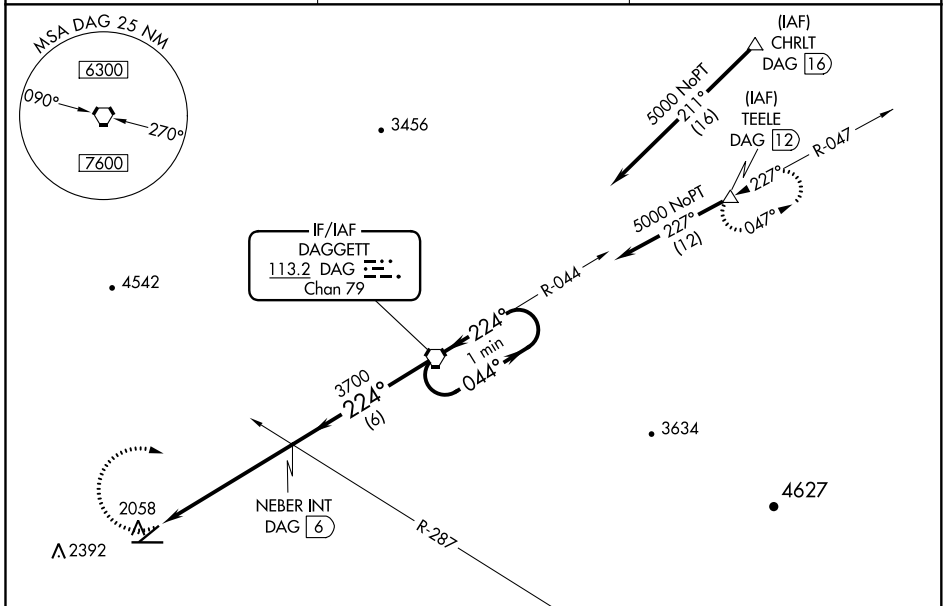
VOR or TACAN RWY 22

BARSTOW-DAGGETT (DAG)

⚠ Circling NA for Cat D south of Rwy 8-26.

MISSED APPROACH: Climbing right turn to 5000 via heading 090° and via DAG VORTAC R-224 to DAG VORTAC and hold (TACAN aircraft climb to 6000 via DAG VORTAC R-047 to TEELE/DAG 12 DME and hold NE, LT 227° inbound).

ASOS 132.175	LOS ANGELES CENTER 132.5 284.7	UNICOM 123.0 (CTAF) ①
------------------------	--	---------------------------------



5000	DAG R-224	DAG	VGSI and descent angles not coincident (VGSI angle 3.00/TCH 49).	One Minute Holding Pattern
		NEBER INT DAG ⑥	DAG VORTAC	
	DAG 11.7	2.93° TCH 40	3700	044°
				224°
				5000

CATEGORY	A	B	C	D
S-22	3160-1¼ 1242 (1300-1¼)	3440-1½ 1522 (1600-1½)	3440-3 1522 (1600-3)	3540-3 1622 (1700-3)
C CIRCLING	3160-1¼ 1230 (1300-1¼)	3440-1½ 1510 (1600-1½)	3500-3 1570 (1600-3)	3540-3 1610 (1700-3)

MIRL Rwy 4-22 and 8-26 ①

FAF to MAP 5.6 NM

Knots	60	90	120	150	180
Min:Sec	5:36	3:44	2:48	2:14	1:52

SW-3, 02 DEC 2021 to 30 DEC 2021

SW-3, 02 DEC 2021 to 30 DEC 2021