

APP CRS	Rwy Idg	<b>4346</b>
<b>008°</b>	TDZE	<b>678</b>
	Apt Elev	<b>685</b>

# RNAV (GPS) RWY 1

PICKAWAY COUNTY MEML (C'YO)

RNP APCH.

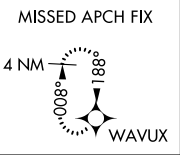
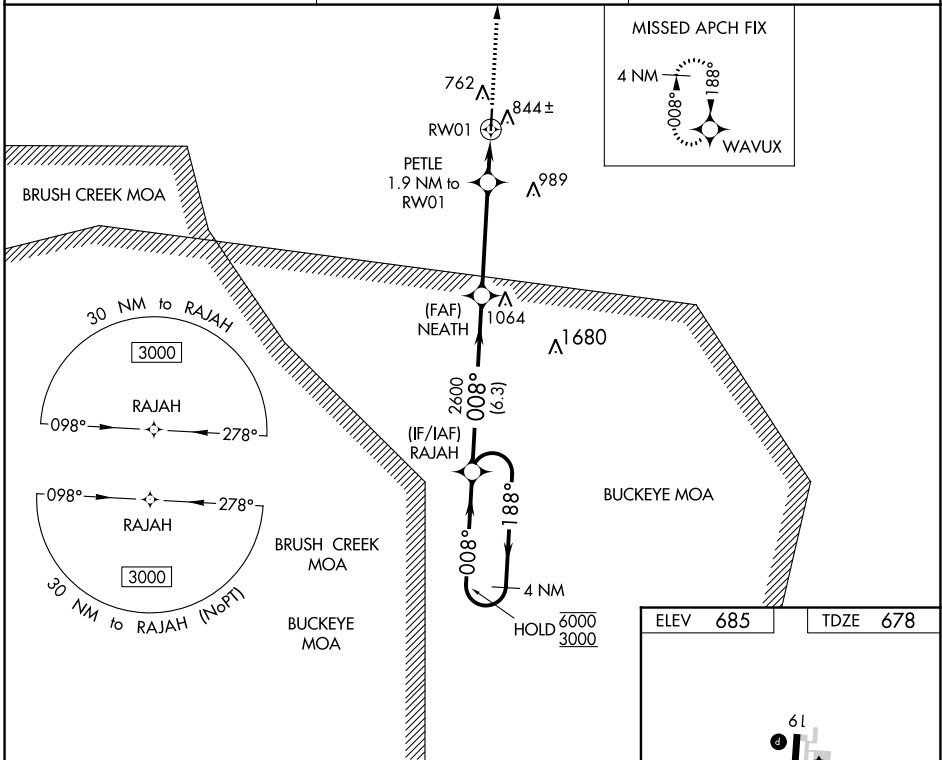
**▲** Use Chillicothe altimeter setting, when not received use Rickenbacker Intl altimeter setting and increase all MDAs 60 feet, and Cats C and D visibility ¼ SM. Rwy 1 helicopter visibility reduction below 1 SM NA. Straight-In and Circling Rwy 1 NA at night.

**MISSED APPROACH:**  
Climb to 3000 direct WAVUX and hold.

RZT AWOS-3  
**119.225**

COLUMBUS APP CON  
**134.0 279.6**

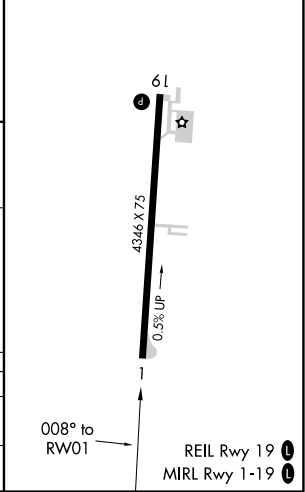
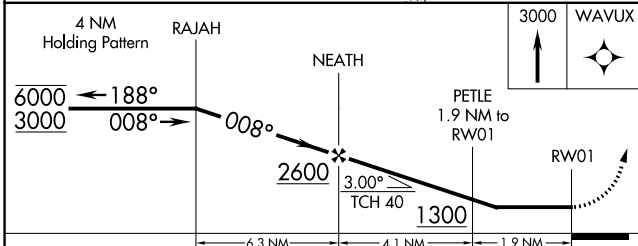
UNICOM  
**122.7 (CTAF) 0**



EC-2, 09 SEP 2021 to 07 OCT 2021

EC-2, 09 SEP 2021 to 07 OCT 2021

ELEV	685	TDZE	678
------	-----	------	-----



CATEGORY	A	B	C	D
LNVA MDA	1100-1	422 (500-1)	1100-1¼	422 (500-1¼)
<b>C</b> CIRCLING	1180-1 495 (500-1)	1200-1 515 (600-1)	1300-1¾ 615 (700-1¾)	1340-2 655 (700-2)

WAAS CH <b>87038</b> <b>W19A</b>	APP CRS <b>188°</b>	Rwy Idg TDZE Apt Elev	<b>4346</b> <b>685</b> <b>685</b>
--	------------------------	-----------------------------	---

# RNAV (GPS) RWY 19

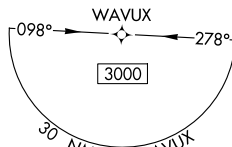
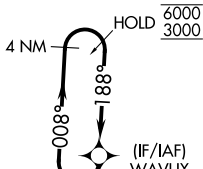
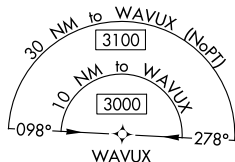
PICKAWAY COUNTY MEML (CYO)

RNP APCH

Baro-VNAV and VDP NA when using Rickenbacker Intl altimeter setting. For uncompensated Baro-VNAV systems, LNAV/VNAV NA below -16°C or above 54°C. Use Chillicothe altimeter setting, when not received use Rickenbacker Intl altimeter setting and increase LPV DA to 985 feet, LNAV/VNAV DA to 1150 feet, and all visibilities ¼ SM. Increase all MDAs 60 feet and Cats C and D visibility ¼ SM. Circling Rwy 1 NA at night. Rwy 19 helicopter visibility reduction below ¾ SM NA.

MISSED APPROACH:  
Climb to 3000 direct  
RAJAH and hold.

RZT AWOS-3 <b>119.225</b>	COLUMBUS APP CON <b>134.0 279.6</b>	UNICOM <b>122.7 (CTAF) 0</b>
------------------------------	--	---------------------------------



1916 A

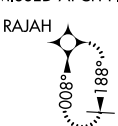
(FAF)  
EZOCY

844 ±  
CAGPA  
1.8 NM to  
RW19

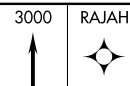
762 A

A989

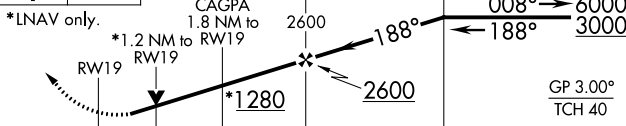
MISSED APCH FIX



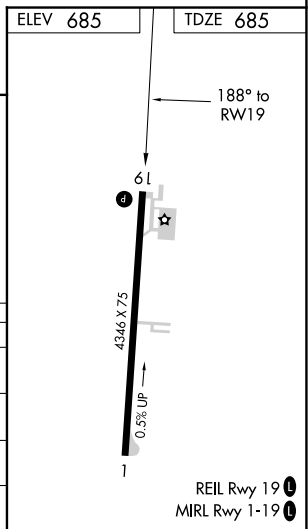
BUCKEYE MOA



VGSI and RNAV glidepath not coincident (VGSI Angle 3.00°/TCH 24). WAVUX Holding Pattern 4 NM



CATEGORY	A	B	C	D
LPV DA		935-7/8	250 (300-7/8)	
LNAV/VNAV DA		1100-13/8	415 (500-13/8)	
LNAV MDA	1100-1	415 (500-1)	1100-13/8	415 (500-13/8)
CIRCLING	1180-1 495 (500-1)	1200-1 515 (600-1)	1300-13/4 615 (700-13/4)	1340-2 655 (700-2)



REIL Rwy 19 0  
MIRL Rwy 1-19 0

EC-2, 09 SEP 2021 to 07 OCT 2021

EC-2, 09 SEP 2021 to 07 OCT 2021

VOR XUB <b>112.5</b>	APP CRS <b>165°</b>	Rwy ldg <b>4346</b> TDZE <b>685</b> Apt Elev <b>685</b>
-------------------------	------------------------	--

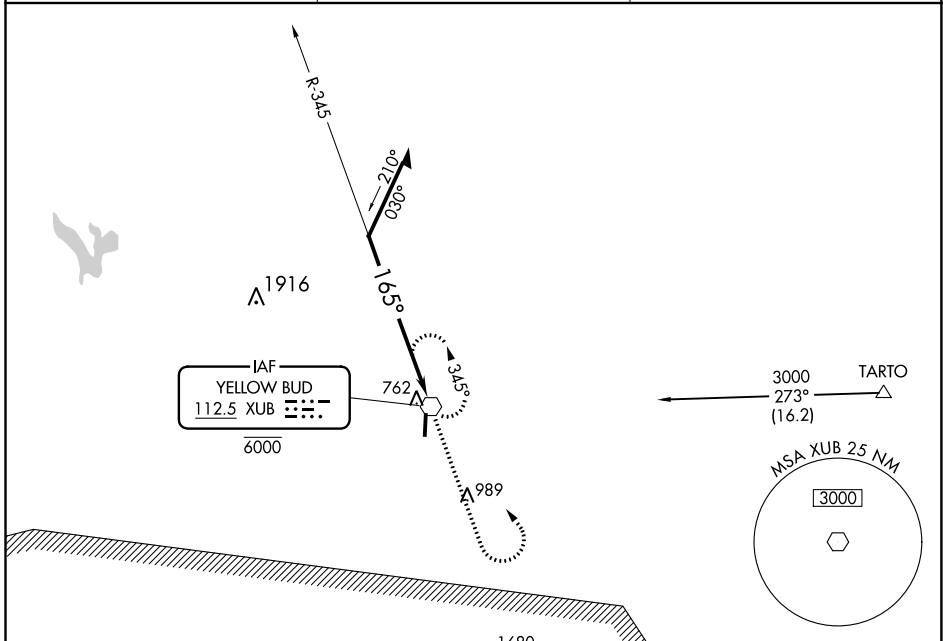
# VOR RWY 19

PICKAWAY COUNTY MEML (CYO)

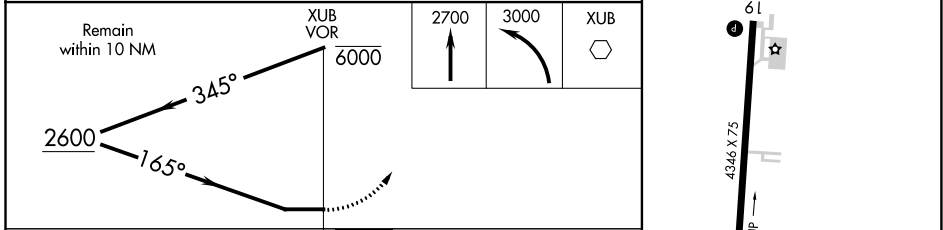
**⚠** Use Chillicothe altimeter setting, when not received use Rickenbacker Intl altimeter setting and increase all MDA's 60 feet and Cats C and D visibility ¼ SM. Circling Rwy 1 NA at night. Rwy 19 helicopter visibility reduction below ¾ SM NA.

MISSED APPROACH: Climb to 2700 then climbing left turn to 3000 direct XUB VOR and hold.

RZT AWOS-3 <b>119.225</b>	COLUMBUS APP CON <b>134.0 279.6</b>	UNICOM <b>122.7 (CTAF) 0</b>
------------------------------	--	---------------------------------



ELEV 685	TDZE 685
----------	----------



CATEGORY	A	B	C	D
S-19	1320-1	635 (700-1)	1320-1¾	635 (700-1¾)
<b>C</b> CIRCLING	1320-1	635 (700-1)	1320-1¾	1340-2
			635 (700-1¾)	655 (700-2)

EC-2, 09 SEP 2021 to 07 OCT 2021

EC-2, 09 SEP 2021 to 07 OCT 2021