

LOC I-CWF	APP CRS	Rwy Idg	10702
<b>110.7</b>	<b>150°</b>	TDZE	16
		Apt Elev	17

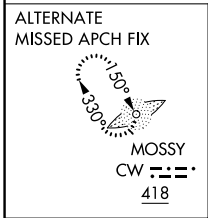
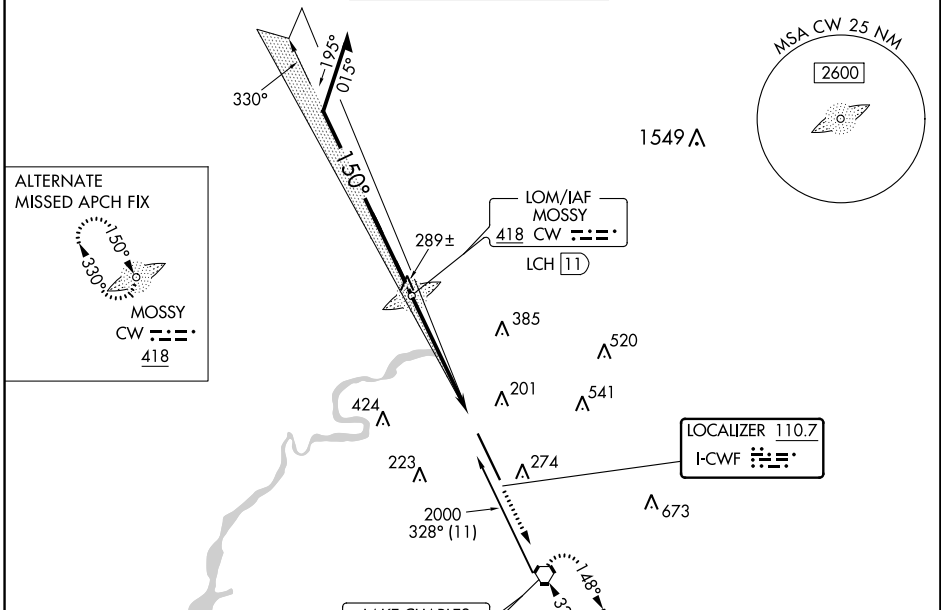
# ILS or LOC RWY 15

CHENNAULT INTL (CWF)

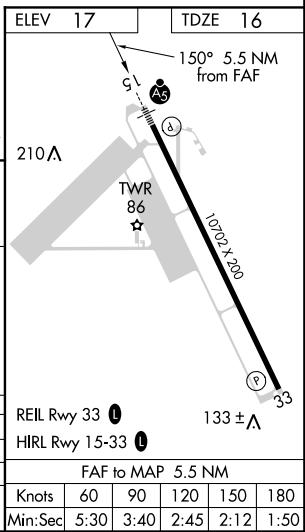
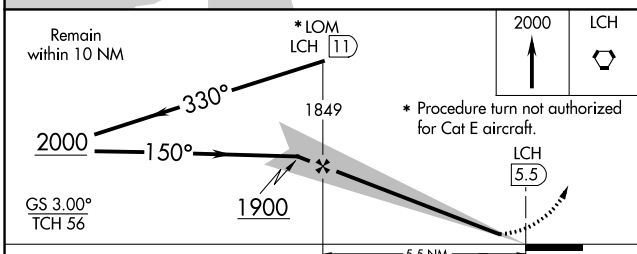
**⚠** When local altimeter setting not received, use Lake Charles Rgnl altimeter setting and increase all DA 37 feet and all MDA 40 feet. Increase S-LOC 15 Cat E visibility ¼ mile. Inoperative table does not apply to S-ILS 15. For inoperative MALSRS increase ASR S-LOC 15 Cat A/B visibility to 1 and Cat E visibility to 1¼. Visibility reduction by helicopters NA.

**MALSRS**  
  
**MISSED APPROACH:**  
 Climb to 2000 direct LCH VORTAC and hold.

ATIS	LAKE CHARLES APP CON*	CHENNAULT TOWER*	GND CON	UNICOM
<b>120.0</b>	<b>119.8 282.3</b>	<b>124.2 (CTAF) 290.4</b>	<b>121.65 275.8</b>	<b>122.95</b>



## RADAR REQUIRED FOR CAT E AIRCRAFT



CATEGORY	A	B	C	D	E
S-ILS 15		216-¾	200 (200-¾)		
S-LOC 15		400-¾	384 (400-¾)		
CIRCLING	580-1	563 (600-1)	580-1½	580-2	880-3
			563 (600-1½)	563 (600-2)	863 (900-3)

SC-4, 16 AUG 2018 to 13 SEP 2018

SC-4, 16 AUG 2018 to 13 SEP 2018

WAAS CH <b>45502</b> W1.5A	APP CRS <b>150°</b>	Rwy Idg <b>10702</b> TDZE <b>16</b> Apt Elev <b>17</b>
----------------------------------	------------------------	--

# RNAV (GPS) RWY 15

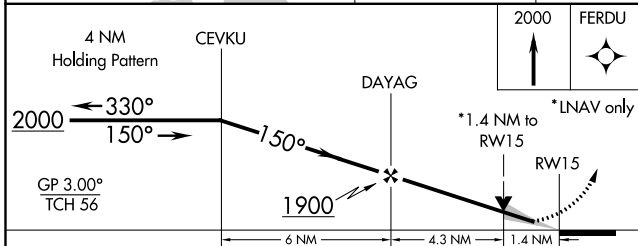
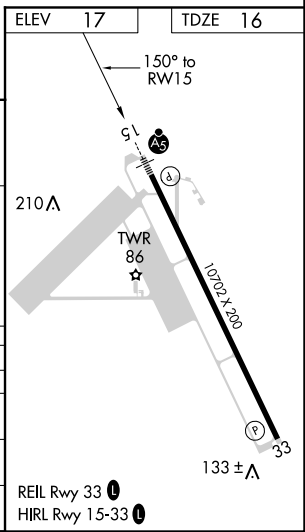
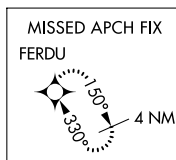
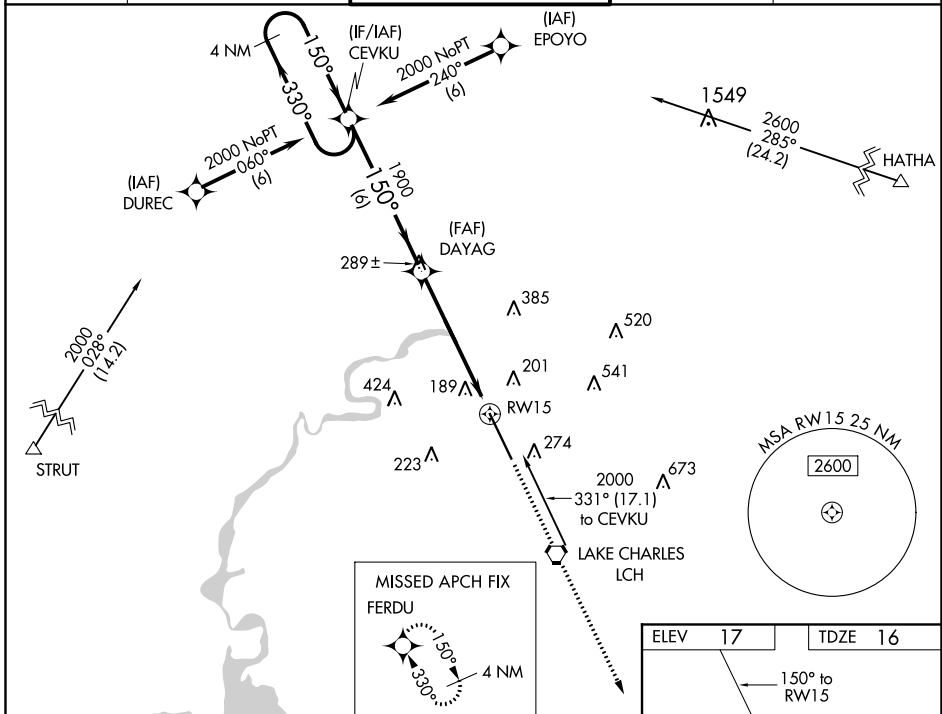
CHENNAULT INTL (CWF)

**ASR** Baro-VNAV NA below -15°C (5°F). DME/DME RNP-0.3 NA. Baro-VNAV and VDP NA when using Lake Charles Rgnl altimeter setting. When local altimeter setting not received, use Lake Charles Rgnl altimeter setting and increase all DA/MDA 20 feet and increase LNAV/VNAV all Cats and LNAV Cat C visibility ¼ mile. For inoperative MALSR increase LNAV Cat A/B visibility ¼ mile. Visibility reduction by helicopter NA.



**MISSED APPROACH:**  
Climb to 2000 direct FERDU and hold.

ATIS <b>120.0</b>	LAKE CHARLES APP CON* <b>119.8 282.3</b>	CHENNAULT TOWER* <b>124.2 (CTAF) 0 290.4</b>	GND CON <b>121.65 275.8</b>	UNICOM <b>122.95</b>
----------------------	---	---	--------------------------------	-------------------------



CATEGORY	A	B	C	D
LPV DA		290-¾	274 (300-¾)	
LNAV/VNAV DA		540-1¼	524 (600-1¼)	
LNAV MDA	500-¾	484 (500-¾)		500-1 484 (500-1)
CIRCLING	580-1¾	563 (600-1¾)		580-2 563 (600-2)

SC-4, 16 AUG 2018 to 13 SEP 2018

SC-4, 16 AUG 2018 to 13 SEP 2018

WAAS CH <b>65817</b> <b>W33A</b>	APP CRS <b>330°</b>	Rwy Idg <b>10702</b> TDZE <b>17</b> Apt Elev <b>17</b>
--	------------------------	--

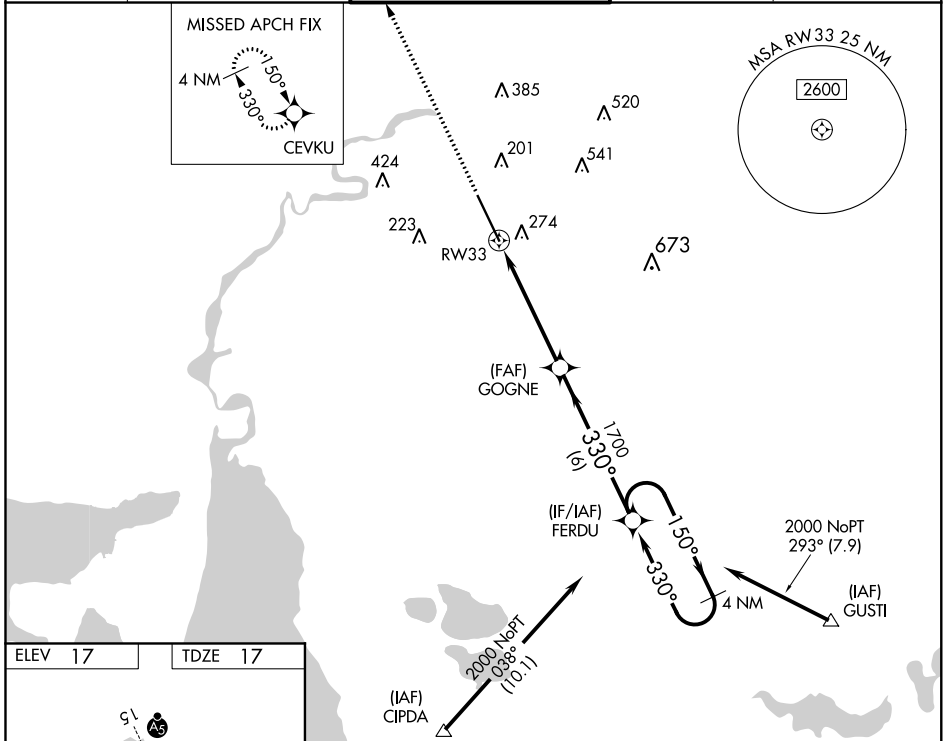
# RNAV (GPS) RWY 33

CHENNAULT INTL (CWF)

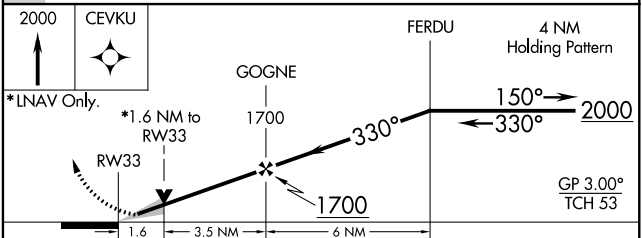
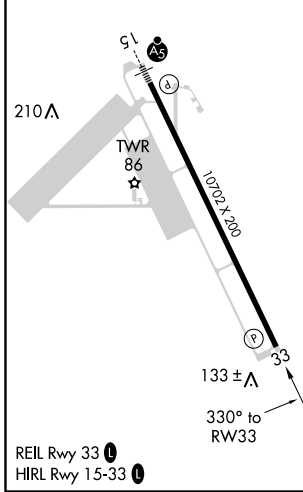
**⚠** Baro-VNAV NA when using Lake Charles Rgnl altimeter setting. For uncompensated Baro-VNAV systems, LNAV/VNAV NA below -15°C (5°F) or above 49°C (120°F). DME/DME RNP-0.3 NA. VDP NA with Lake Charles Rgnl altimeter setting. When local altimeter not received, use Lake Charles Rgnl altimeter setting and increase all DA 16 feet and all MDA 20 feet.

**MISSED APPROACH:**  
Climb to 2000 direct CEVKU and hold.

ATIS <b>120.0</b>	LAKE CHARLES APP CON * <b>119.8 282.3</b>	CHENNAULT TOWER * <b>124.2</b> (CTAF) <b>0 290.4</b>	GND CON <b>121.65 275.8</b>	UNICOM <b>122.95</b>
----------------------	--	---	--------------------------------	-------------------------



ELEV 17	TDZE 17
---------	---------



CATEGORY	A	B	C	D
LPV DA		217-3/4	200 (200-3/4)	
LNAV/VNAV DA		494-13/4	477 (500-13/4)	
LNAV MDA	580-1	563 (600-1)	580-1 1/2 563 (600-1 1/2)	580-1 3/4 563 (600-1 3/4)
CIRCLING	640-1	623 (700-1)	640-1 3/4 623 (700-1 3/4)	640-2 623 (700-2)

SC-4, 16 AUG 2018 to 13 SEP 2018

SC-4, 16 AUG 2018 to 13 SEP 2018