

NDB SKB <b>344</b>	APP CRS <b>353°</b>	Rwy Idg TDZE Apt Elev	<b>4200</b> <b>1000</b> <b>1003</b>
-----------------------	------------------------	-----------------------------	-------------------------------------------

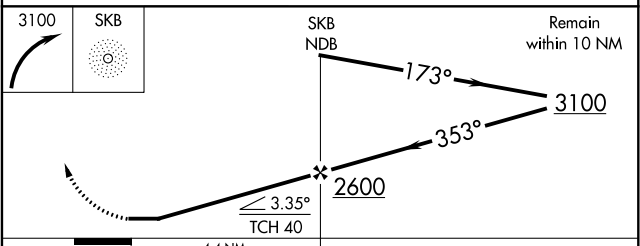
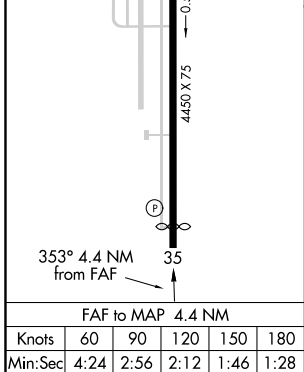
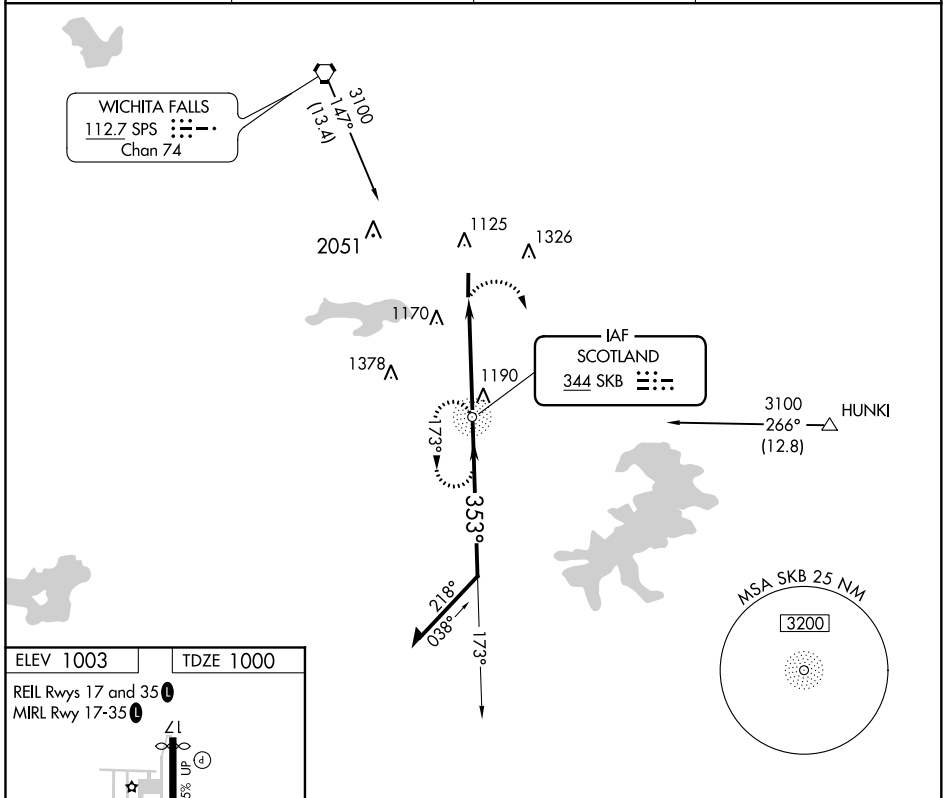
# NDB RWY 35

KICKAPOO DOWNTOWN (CWC)

**NA** Use Sheppard AFB/Wichita Falls Muni altimeter setting. Rwy 35 helicopter visibility reduction below 3/4 SM NA.

MISSED APPROACH: Climbing right turn to 3100 direct SKB NDB and hold, continue climb-in-hold to 3100.

AWOS-3 <b>119.625</b>	SHEPPARD APP CON* <b>120.4 269.025</b>	CLNC DEL <b>121.2</b>	UNICOM <b>122.7 (CTAF)</b>
--------------------------	-------------------------------------------	--------------------------	-------------------------------



CATEGORY	A	B	C	D
S-35	1520-1	520 (600-1)	1520-1½ 520 (600-1½)	NA
<input checked="" type="checkbox"/> CIRCLING	1440-1 437 (500-1)	1480-1 477 (500-1)	1720-2 717 (800-2)	NA

SC-2, 25 FEB 2021 to 25 MAR 2021

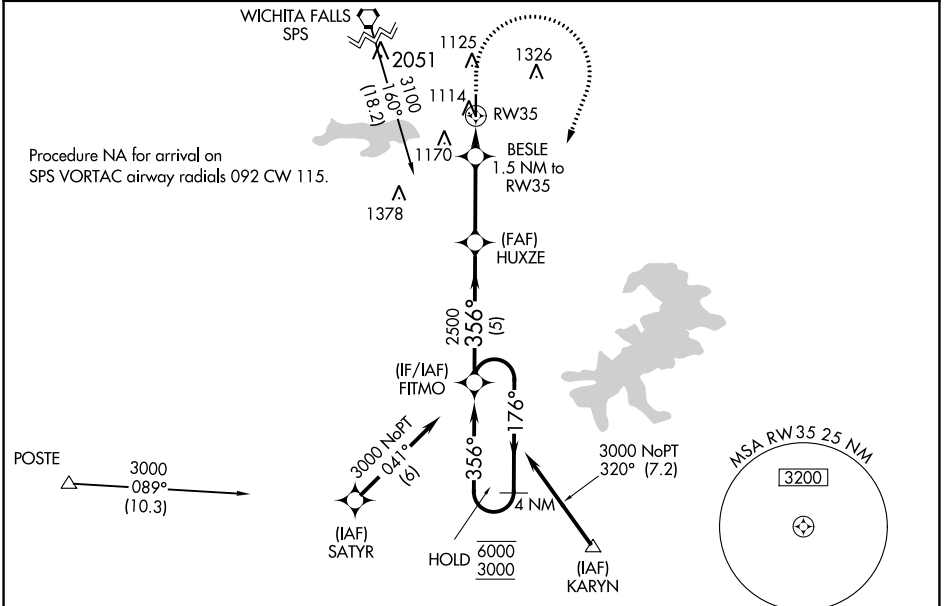
SC-2, 25 FEB 2021 to 25 MAR 2021

WAAS CH <b>90438</b> <b>W35A</b>	APP CRS <b>356°</b>	Rwy Idg TDZE Apt Elev	<b>4200</b> <b>1000</b> <b>1003</b>
----------------------------------------	------------------------	-----------------------------	-------------------------------------------

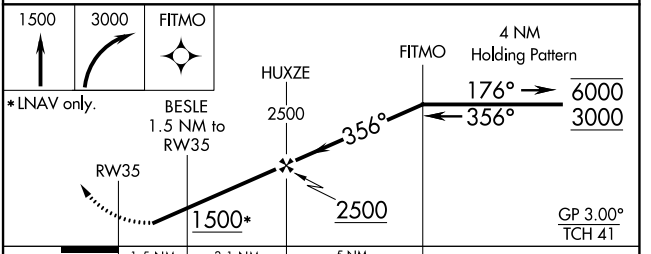
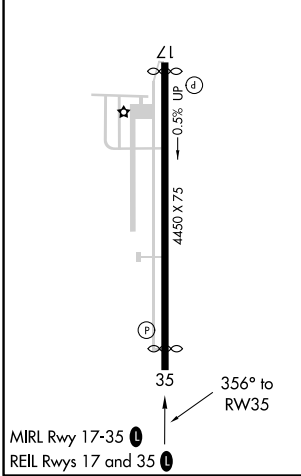
# RNAV (GPS) RWY 35

KICKAPOO DOWNTOWN (CWC)

RNP APCH.		MISSED APPROACH: Climb to 1500 then climbing right turn to 3000 direct FITMO and hold.	
AWOS-3 <b>119.625</b>	SHEPPARD APP CON ★ <b>120.4 269.025</b>	CLNC DEL <b>121.2</b>	UNICOM <b>122.7 (CTAF) 0</b>



ELEV 1003	TDZE 1000
-----------	-----------



CATEGORY	A	B	C	D
LNAV/VNAV DA	1284-1	284 (300-1)		NA
LPV DA	1299-7/8	299 (300-7/8)		NA
LNAV MDA	1380-1	380 (400-1)		NA
<b>C</b> CIRCLING	1440-1 437 (500-1)	1480-1 477 (500-1)	1720-2 717 (800-2)	NA

SC-2, 25 FEB 2021 to 25 MAR 2021

SC-2, 25 FEB 2021 to 25 MAR 2021