

LOC/DME I-CUB 110.9 Chan 46	APP CRS 311°	Rwy Idg 4599 TDZE 186 Apt Elev 193
---	------------------------	---

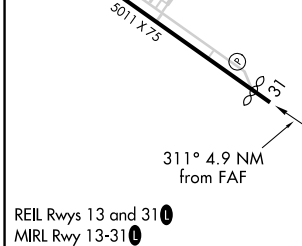
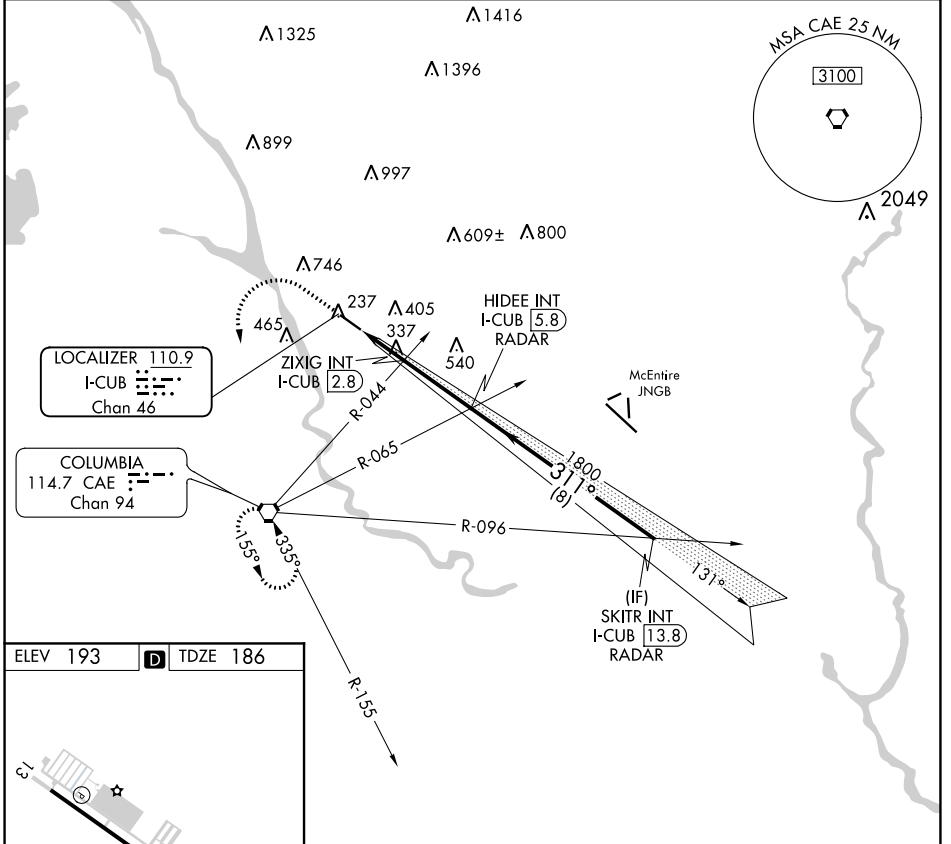
LOC RWY 31
JIM HAMILTON L B OWENS (CUB)

RADAR required for procedure entry.

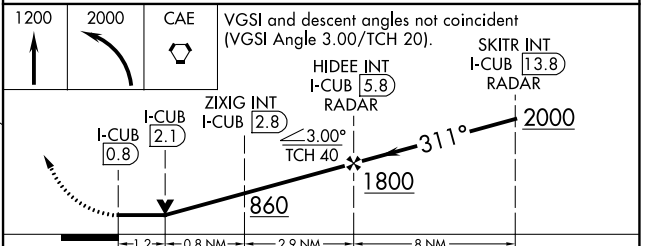
▼ NA Rwy 31 helicopter visibility reduction below 3/4 SM NA.

MISSED APPROACH: Climb to 1200 then climbing left turn to 2000 direct CAE VORTAC and hold.

ASOS 118.675	COLUMBIA APP CON 133.4 285.6	CLNC DEL 124.4	UNICOM 123.075 (CTAF) 0
------------------------	--	--------------------------	-----------------------------------



ELEV 193	D	TDZE 186			
REL Rwys 13 and 31 MIRL Rwy 13-31					
FAF to MAP 4.9 NM					
Knots	60	90	120	150	180
Min:Sec	4:54	3:16	2:27	1:58	1:38



CATEGORY	A	B	C	D
S-LOC 31	600-1	414 (500-1)	600-1 1/8	414 (500-1 1/8)

SE-2, 03 DEC 2020 to 31 DEC 2020

SE-2, 03 DEC 2020 to 31 DEC 2020

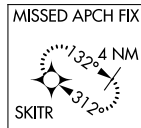
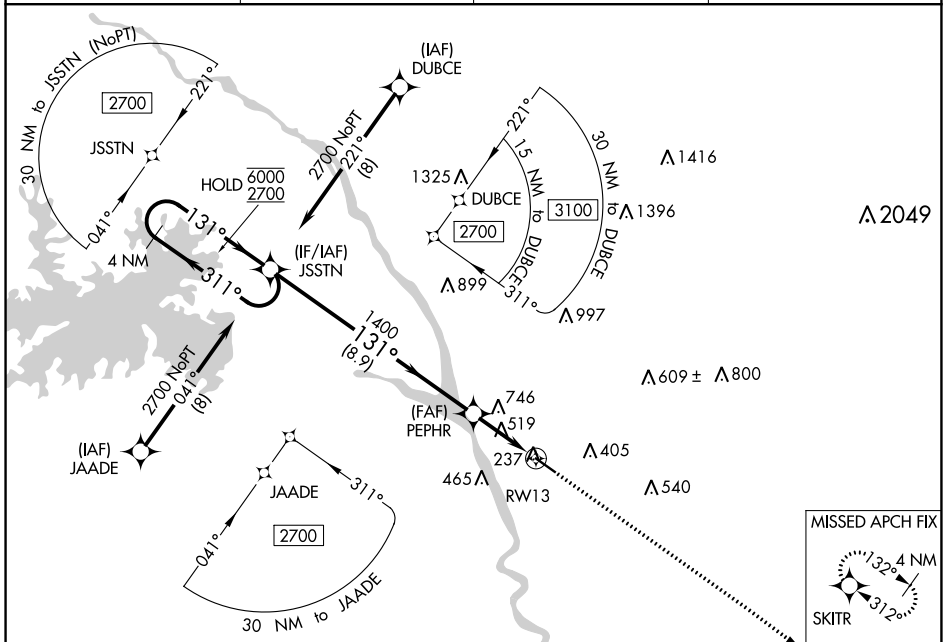
WAAS CH 49042 W13A	APP CRS 131°	Rwy Idg TDZE 193 Apt Elev 193	4999
--	------------------------	---	-------------

RNAV (GPS) RWY 13

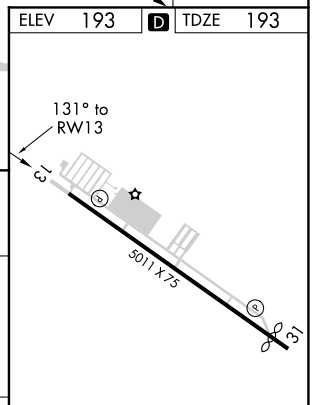
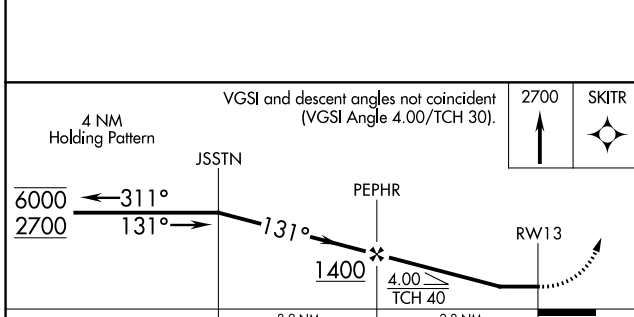
JIM HAMILTON L B OWENS (CUB)

RNP APCH.		MISSED APPROACH: Climb to 2700 direct SKITR and hold.	
<p>Procedure NA at night. Rwy 13 helicopter visibility reduction below 1 SM NA.</p>			

ASOS 118.675	COLUMBIA APP CON 133.4 285.6	CLNC DEL 124.4	UNICOM 123.075 (CTAF) 0
------------------------	--	--------------------------	-----------------------------------



ELEV 193	D	TDZE 193
----------	----------	----------



CATEGORY	A	B	C	D
LP MDA	780-1	587 (600-1)	NA	
LNAV MDA	1060-1 867 (900-1)	1060-1¼ 867 (900-1¼)	NA	

REIL Rwy 13 and 31 **0**
MIRL Rwy 13-31 **0**

SE-2, 03 DEC 2020 to 31 DEC 2020

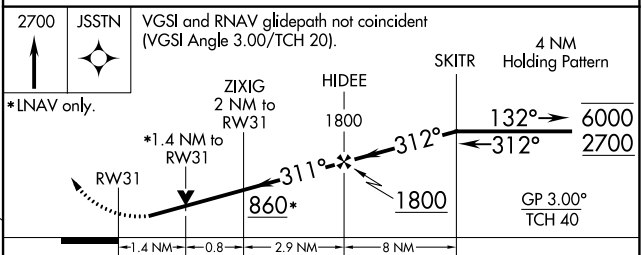
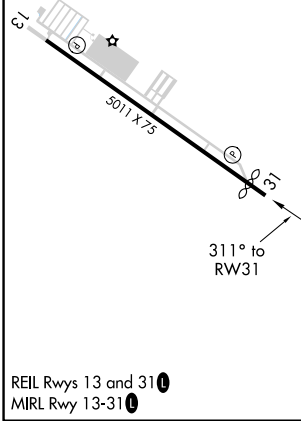
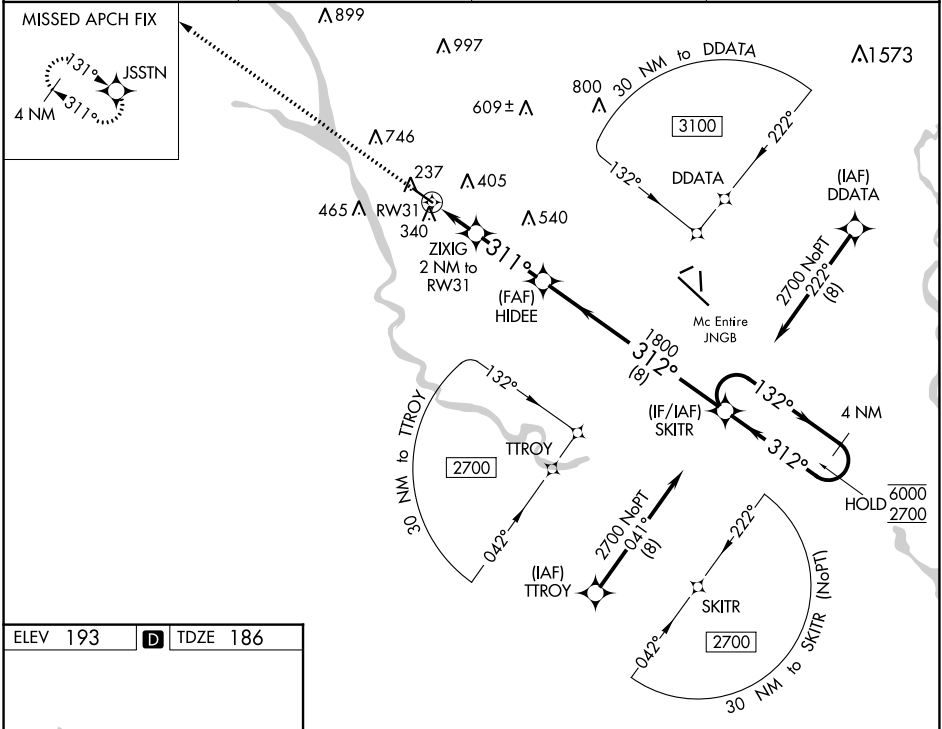
SE-2, 03 DEC 2020 to 31 DEC 2020

WAAS CH 42742 W31A	APP CRS 311°	Rwy Idg TDZE Apt Elev	4599 186 193
--	------------------------	-----------------------------	---

RNAV (GPS) RWY 31

JIM HAMILTON L B OWENS (CUB)

RNP APCH.		MISSED APPROACH: Climb to 2700 direct JSSTN and hold.	
<p>▼ Rwy 31 helicopter visibility reduction below 3/4 SM NA. For uncompensated Baro-VNAV systems, LNAV/VNAV NA below -6°C or above 54°C.</p>		ASOS 118.675	COLUMBIA APP CON 133.4 285.6
		CLNC DEL 124.4	UNICOM 123.075 (CTAF) 0



2700	JSSTN	VGSIs and RNAV glidepath not coincident (VGSIs Angle 3.00/TCH 20).		4 NM Holding Pattern
*LNAV only.		ZIXIG 2 NM to RW31	HIDEE 1800	SKITR
RW31		*1.4 NM to RW31	1800	6000
		860*	1800	2700
		1.4 NM	0.8	2.9 NM
		8 NM		
CATEGORY	A	B	C	D
LPV DA		436-3/4	250 (300-3/4)	
LNAV/VNAV DA		551-1	365 (400-1)	
LNAV MDA	640-1	454 (500-1)	640-1 3/8	454 (500-1 3/8)

SE-2, 03 DEC 2020 to 31 DEC 2020

SE-2, 03 DEC 2020 to 31 DEC 2020