

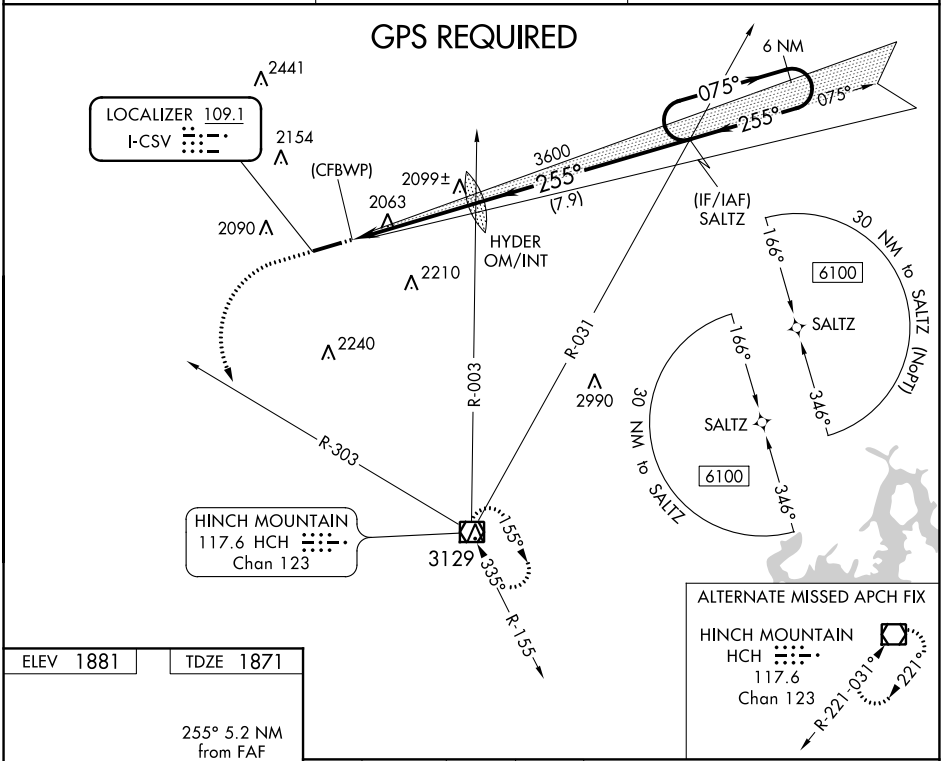
LOC I-CSV 109.1	APP CRS 255°	Rwy Idg TDZE Apt Elev	5418 1871 1881
---------------------------	------------------------	-----------------------------	---

ILS Y or LOC Y RWY 26

CROSSVILLE MEML-WHITSON FLD (CSV)

⚠ MISSED APPROACH: Climb to 3000 then climbing left turn to 5000 on heading 180° and HCH VOR/DME R-303 to HCH VOR/DME and hold.

ASOS 120.625	ATLANTA CENTER 133.6 254.3	UNICOM 122.7 (CTAF) 📻
------------------------	--------------------------------------	--

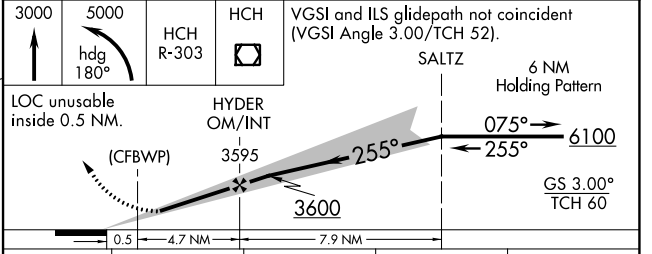


ELEV 1881	TDZE 1871
-----------	-----------

REIL Rwy 26
HIRL Rwy 8-26 **📻**

FAF to MAP 4.7 NM

Knots	60	90	120	150	180
Min:Sec	4:42	3:08	2:21	1:53	1:34



CATEGORY	A	B	C	D
S-ILS 26	2090- ³ / ₄ 219 (300- ³ / ₄)			
S-LOC 26	2440-1	569 (600-1)	2440-1 ⁵ / ₈	569 (600-1 ⁵ / ₈)
📻 CIRCLING	2440-1	559 (600-1)	2440-1 ⁵ / ₈ 559 (600-1 ⁵ / ₈)	2540-2 659 (700-2)

SE-1, 17 JUN 2021 to 15 JUL 2021

SE-1, 17 JUN 2021 to 15 JUL 2021

LOC I-CSV 109.1	APP CRS 255°	Rwy Idg TDZE Apt Elev	5418 1871 1881
---------------------------	------------------------	-----------------------------	---

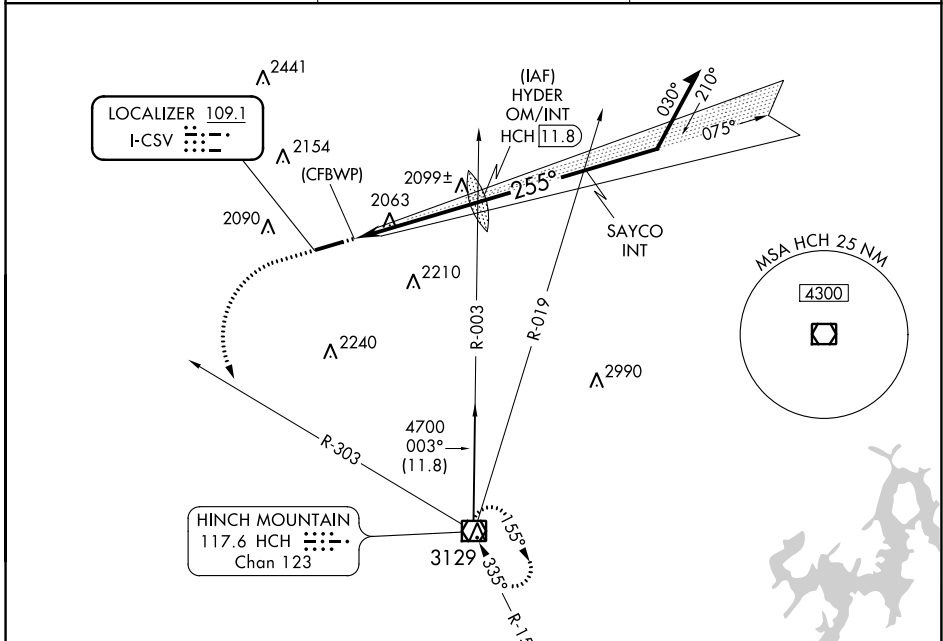
ILS Z or LOC Z RWY 26

CROSSVILLE MEML-WHITSON FLD (CSV)

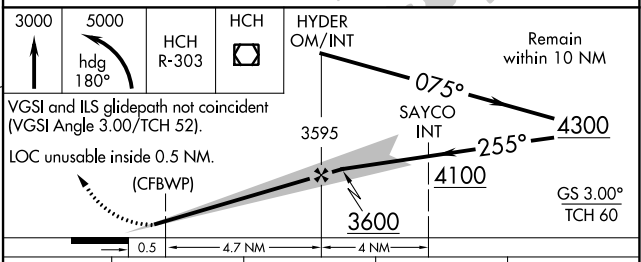
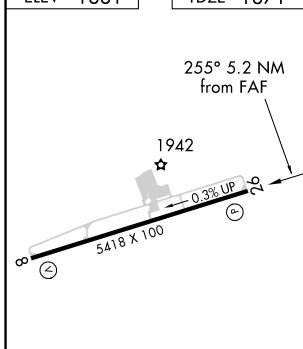
▽
▲

MISSED APPROACH: Climb to 3000 then climbing left turn to 5000 on heading 180° and HCH VOR/DME R-303 to HCH VOR/DME and hold.

ASOS 120.625	ATLANTA CENTER 133.6 254.3	UNICOM 122.7 (CTAF) ①
------------------------	--------------------------------------	--



ELEV 1881	TDZE 1871
-----------	-----------



CATEGORY	A	B	C	D
S-ILS 26	2090- ³ / ₄ 219 (300- ³ / ₄)			
S-LOC 26	2440-1	569 (600-1)	2440-1 ⁵ / ₈	569 (600-1 ⁵ / ₈)
☑ CIRCLING	2440-1	559 (600-1)	2440-1 ⁵ / ₈	2540-2 659 (700-2)

REIL Rwy 26
HIRL Rwy 8-26 **①**

FAF to MAP 4.7 NM

Knots	60	90	120	150	180
Min:Sec	4:42	3:08	2:21	1:53	1:34

SE-1, 17 JUN 2021 to 15 JUL 2021

SE-1, 17 JUN 2021 to 15 JUL 2021

WAAS CH 65911 W26A	APP CRS 256°	Rwy Idg TDZE Apt Elev	5418 1871 1881
--	------------------------	-----------------------------	---

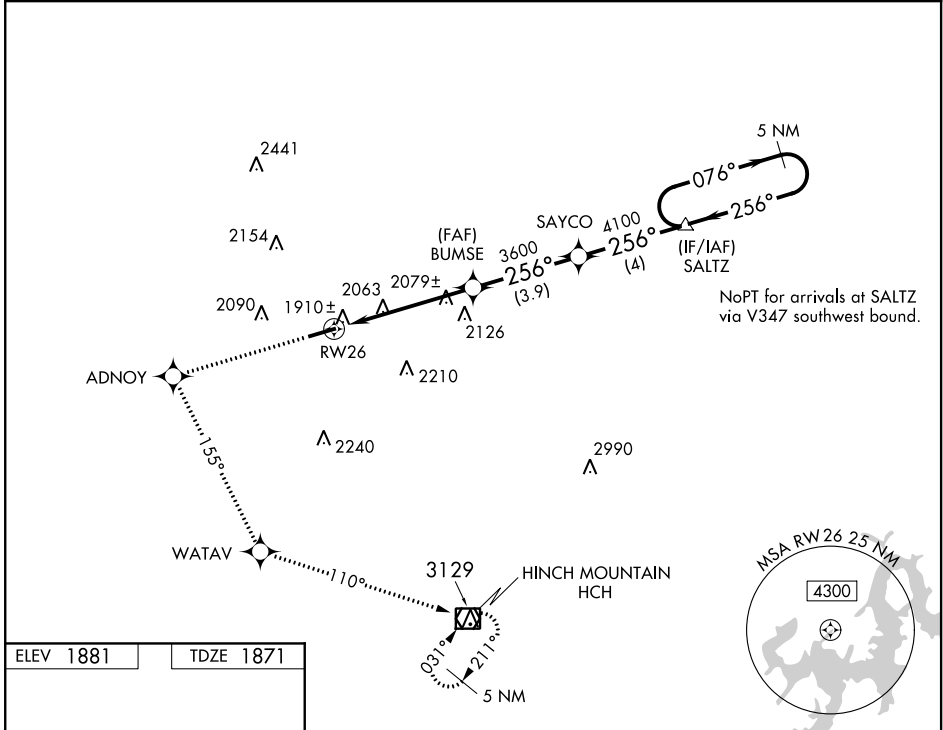
RNAV (GPS) RWY 26

CROSSVILLE MEML-WHITSON FLD (CSV)

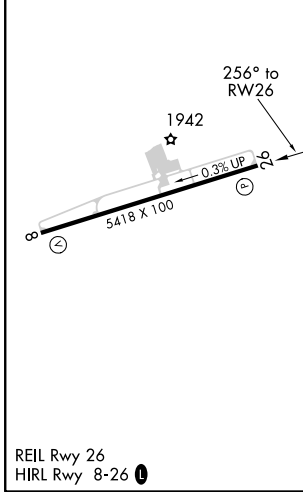
For uncompensated Baro-VNAV systems, LNAV/VNAV NA below -18°C (0°F) or above 45°C (113°F). DME/DME RNP-0.3 NA.

MISSED APPROACH: Climb to 5000 direct ADNOY and left turn on track 155° to WATAV and on track 110° to HCH VOR/DME and hold.

ASOS 120.625	ATLANTA CENTER 133.6 254.3	UNICOM 122.7 (CTAF)
------------------------	--------------------------------------	-------------------------------



ELEV 1881	TDZE 1871
-----------	-----------



5000	ADNOY	WATAV	HCH	SALTZ	5 NM Holding Pattern
↑	✧	tr 155°	✧	tr 110°	☐
*LNAV only.					
	RW26	BUMSE	SAYCO	SALTZ	4700
	1.3 NM	3600	4100	076°	GP 3.00° TCH 60
	1.3 NM	3.9 NM	3.9 NM	256°	VGSI and RNAV glidepath not coincident (VGSI Angle 3.00/TCH 52).
CATEGORY	A	B	C	D	
LPV DA	2071-3/4				200 (200-3/4)
LNAV/VNAV DA	2170-1				299 (300-1)
LNAV MDA	2440-1	569 (600-1)	2440-1 5/8	569 (600-1 5/8)	
CIRCLING	2440-1	559 (600-1)	2440-1 1/2	2540-2	639 (700-2)
			559 (600-1 1/2)		

SE-1, 17 JUN 2021 to 15 JUL 2021

SE-1, 17 JUN 2021 to 15 JUL 2021

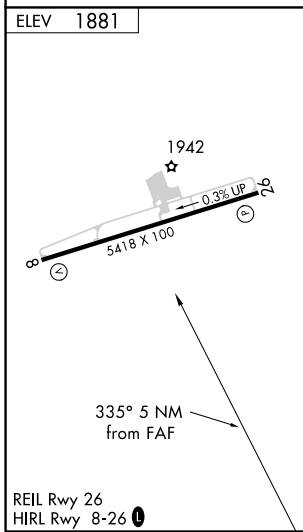
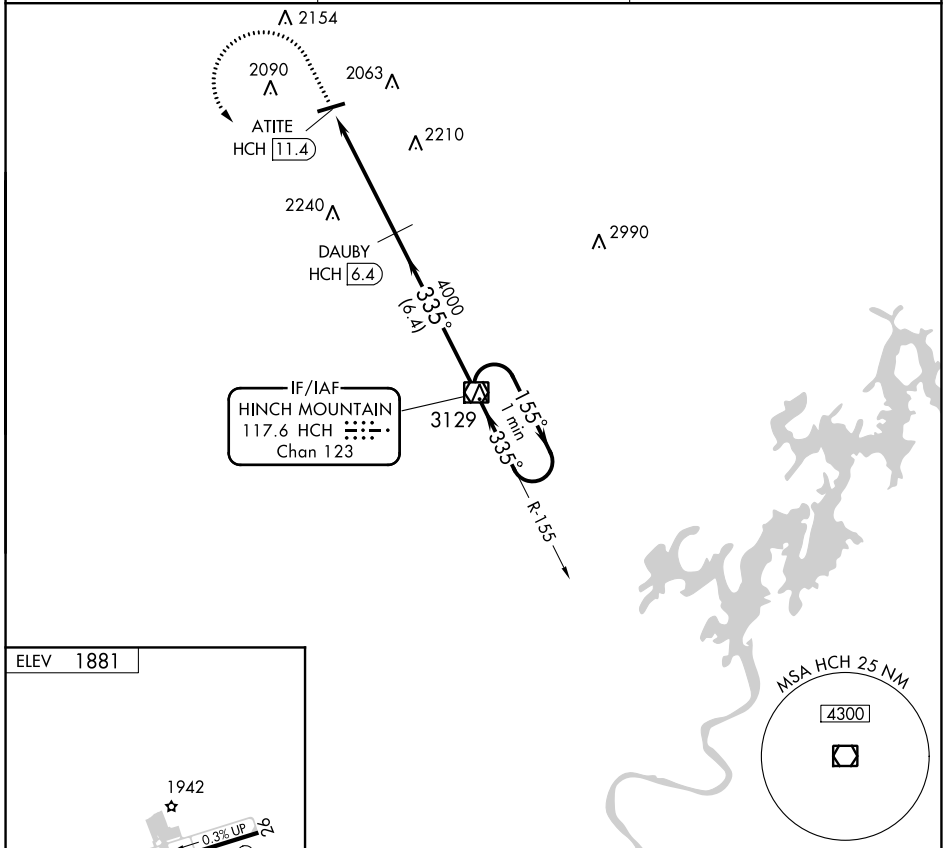
VOR/DME HCH 117.6 Chan 123	APP CRS 335°	Rwy Idg TDZE Apt Elev 1881	N/A N/A 1881
--	------------------------	---	---

VOR-A

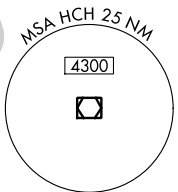
CROSSVILLE MEML-WHITSON FLD (CSV)

<p>NA DME required.</p>	<p>MISSED APPROACH: Climb to 3000 then climbing left turn to 5000 direct HCH VOR/DME and hold.</p>
--------------------------------	--

<p>ASOS 120.625</p>	<p>ATLANTA CENTER 133.6 254.3</p>	<p>UNICOM 122.7 (CTAF)</p>
--------------------------------	--	---------------------------------------



<p>3000</p> <p>5000</p> <p>HCH</p>	<p>HCH VOR/DME</p> <p>One Minute Holding Pattern</p>										
<p>ATITE HCH 11.4</p> <p>DAUBY HCH 6.4</p> <p>4000</p> <p>5 NM</p> <p>6.4 NM</p>	<p>155°</p> <p>335°</p> <p>5000</p>										
<table border="1"> <thead> <tr> <th>CATEGORY</th> <th>A</th> <th>B</th> <th>C</th> <th>D</th> </tr> </thead> <tbody> <tr> <td>C CIRCLING</td> <td>2340-1</td> <td>459 (500-1)</td> <td>2340-1½ 459 (500-1½)</td> <td>2540-2 659 (700-2)</td> </tr> </tbody> </table>	CATEGORY	A	B	C	D	C CIRCLING	2340-1	459 (500-1)	2340-1½ 459 (500-1½)	2540-2 659 (700-2)	
CATEGORY	A	B	C	D							
C CIRCLING	2340-1	459 (500-1)	2340-1½ 459 (500-1½)	2540-2 659 (700-2)							



SE-1, 17 JUN 2021 to 15 JUL 2021

SE-1, 17 JUN 2021 to 15 JUL 2021