

SOCAL APP CON  
127.4 263.025  
CAMP PENDELTON ATIS\*  
285.45  
MC CLELLAN-PALOMAR ATIS  
120.15

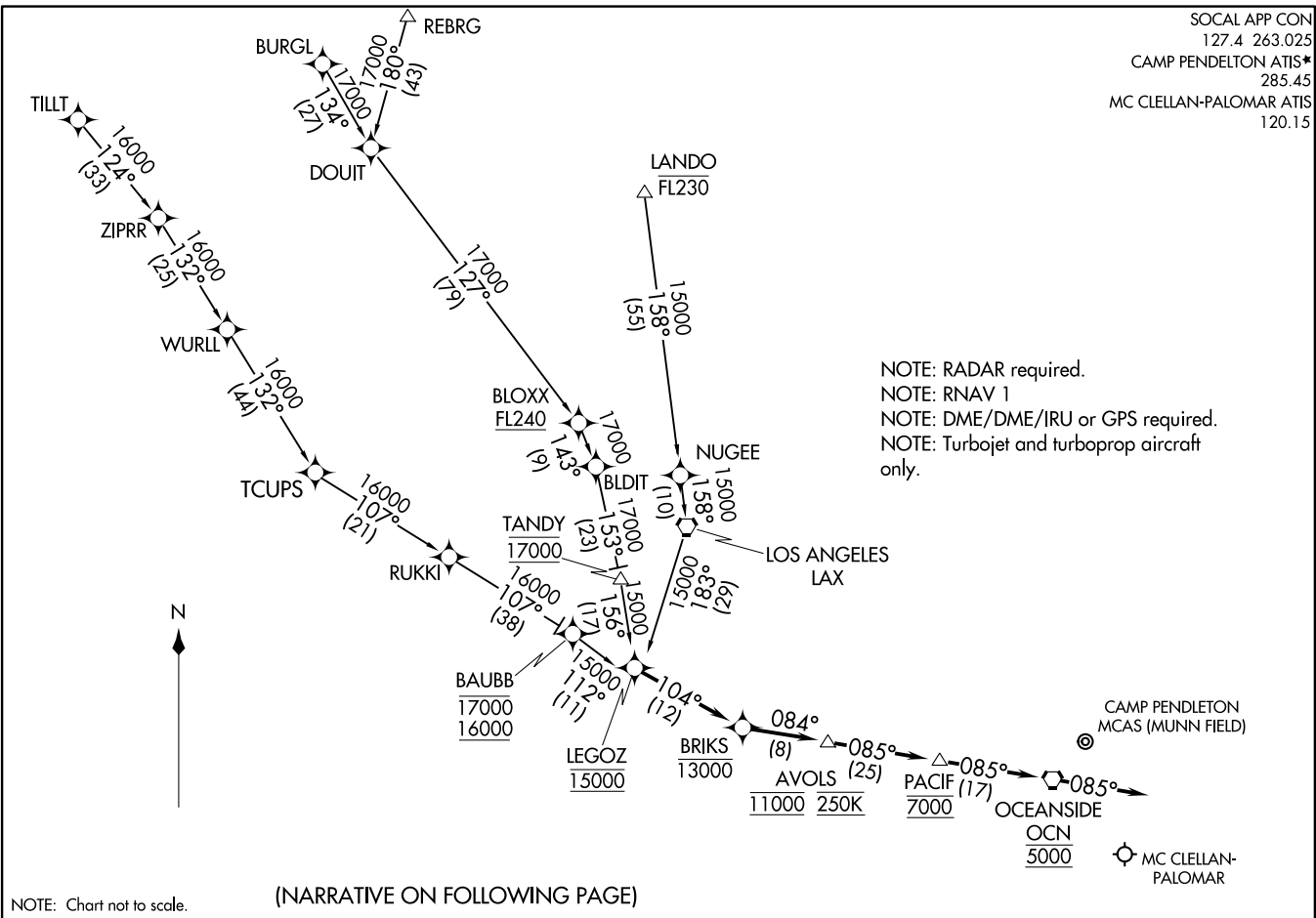
(LEGOZ.LEGOZZ) 17285  
LEGOZ TWO ARRIVAL(RNAV)

AL-5310 (FAA)

CARLSBAD, CALIFORNIA

LEGOZ TWO ARRIVAL(RNAV)  
(LEGOZ.LEGOZZ) 120CT17

CARLSBAD, CALIFORNIA



NOTE: Chart not to scale.

(NARRATIVE ON FOLLOWING PAGE)

ARRIVAL ROUTE DESCRIPTION

BAUBB TRANSITION (BAUBB.LEGOZ2)

BLOXX TRANSITION (BLOXX.LEGOZ2)

BURGL TRANSITION (BURGL.LEGOZ2)

LANDO TRANSITION (LANDO.LEGOZ2)

REBRG TRANSITION (REBRG.LEGOZ2)

TILLT TRANSITION (TILLT.LEGOZ2)

LANDING CRQ RUNWAY 6: From LEGOZ on track 104° to cross BRIKS at or below 13000, then on track 084° to cross AVOLS at 11000 and at 250K, then on track 085° to cross PACIF at 7000. Expect RNAV (RNP) Z RWY 6 approach.

LANDING CRQ RUNWAY 24: From LEGOZ on track 104° to cross BRIKS at or below 13000, then on track 084° to cross AVOLS at 11000 and at 250K, then on track 085° to cross PACIF at 7000, then on track 085° to cross OCN VORTAC at 5000, then on track 085° . Expect RADAR vectors to ILS or LOC RWY 24 final approach course.

LANDING NFG: From LEGOZ on track 104° to cross BRIKS at or below 13000, then on track 084° to cross AVOLS at 11000 and at 250K, then on track 085° to cross PACIF at 7000, then on track 085° to cross OCN VORTAC at 5000, then on track 085° . Expect RNAV (GPS) RWY 21 approach or RADAR vectors to final approach course.

SW-3, 25 MAR 2021 to 22 APR 2021

SW-3, 25 MAR 2021 to 22 APR 2021