

(CWARD2.CWARD) 17341

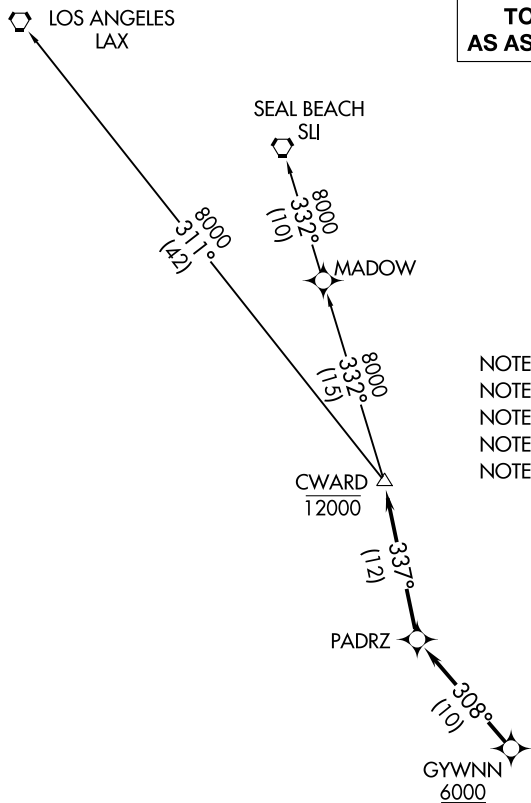
# CWARD TWO DEPARTURE (RNAV)

AL-5310 (FAA)

MC CLELLAN-PALOMAR (CRQ)  
CARLSBAD, CALIFORNIA

**TOP ALTITUDE:  
AS ASSIGNED BY ATC**

ATIS  
120.15  
PALOMAR TOWER\*  
118.6 276.4  
SOCAL DEP CON  
119.6 363.1



- NOTE: RADAR required.
- NOTE: RNAV 1.
- NOTE: GPS or DME/DME/IRU required.
- NOTE: Turbojet and turboprop only.
- NOTE: Tower En Route control only.

### TAKEOFF MINIMUMS

Rwy 6: Standard with minimum climb  
of 255' per NM to 1700.

Rwy 24: Standard.

NOTE: Chart not to scale.

### DEPARTURE ROUTE DESCRIPTION

**TAKEOFF RUNWAY 6:** Climbing left turn heading 245° to 2300, do not exceed 210K until established on heading 245°, expect vectors to cross GYWNN at or above 6000, then on track 308° to PADRZ, then on track 337° to cross CWARD at or below 12000, thence. . .

**TAKEOFF RUNWAY 24:** Climb heading 245° to 2300, expect vectors to cross GYWNN at or above 6000, then on track 308° to PADRZ, then on track 337° to cross CWARD at or below 12000, thence. . .

. . . on transition. Maintain ATC assigned altitude. Expect filed altitude 10 minutes after departure.

LOS ANGELES TRANSITION (CWARD2.LAX)

SEAL BEACH TRANSITION (CWARD2.SLI)

# CWARD TWO DEPARTURE (RNAV)

(CWARD2.CWARD) 07DEC17

CARLSBAD, CALIFORNIA  
MC CLELLAN-PALOMAR (CRQ)

SW-3, 22 APR 2021 to 20 MAY 2021

SW-3, 22 APR 2021 to 20 MAY 2021

(PADRZ2.PADRZ) 17341

# PADRZ TWO DEPARTURE (RNAV)

AL-5310 (FAA)

MC CLELLAN-PALOMAR (CRQ)  
CARLSBAD, CALIFORNIA

ATIS  
120.15  
PALOMAR TOWER\*  
118.6 276.4  
SOCAL DEP CON  
119.6 363.1

**TOP ALTITUDE:  
15000**

## DEPARTURE ROUTE DESCRIPTION

**TAKEOFF RUNWAY 6:** Climbing left turn heading 245° to 2300, do not exceed 210K until established on heading 245°, expect vectors to cross GYWNN at or above 8000, then on track 308° to PADRZ, thence. . . .

**TAKEOFF RUNWAY 24:** Climb heading 245° to 2300, expect vectors to cross GYWNN at or above 8000, then on track 308° to PADRZ, thence. . . .

. . . .on (transition). Maintain 15000. Expect higher altitude 10 minutes after departure.

CHKNN TRANSITION (PADRZ2.CHKNN)

DINTY TRANSITION (PADRZ2.DINTY)

IKAYE TRANSITION (PADRZ2.IKAYE)

MALIT TRANSITION (PADRZ2.MALIT)

OROSZ TRANSITION (PADRZ2.OROSZ)

SHAFTER TRANSITION (PADRZ2.EHF)

NOTE: RNAV 1.

NOTE: RADAR required.

NOTE: Turbojets and turboprops only.

NOTE: CHKNN, SHAFTER, IKAYE, OROSZ  
TRANSITIONS: DME/DME/IRU or GPS  
required.

NOTE: DINTY, MALIT TRANSITIONS: GPS only.

NOTE: For non-GPS equipped aircraft,  
Oceanside (OCN) must be operational.

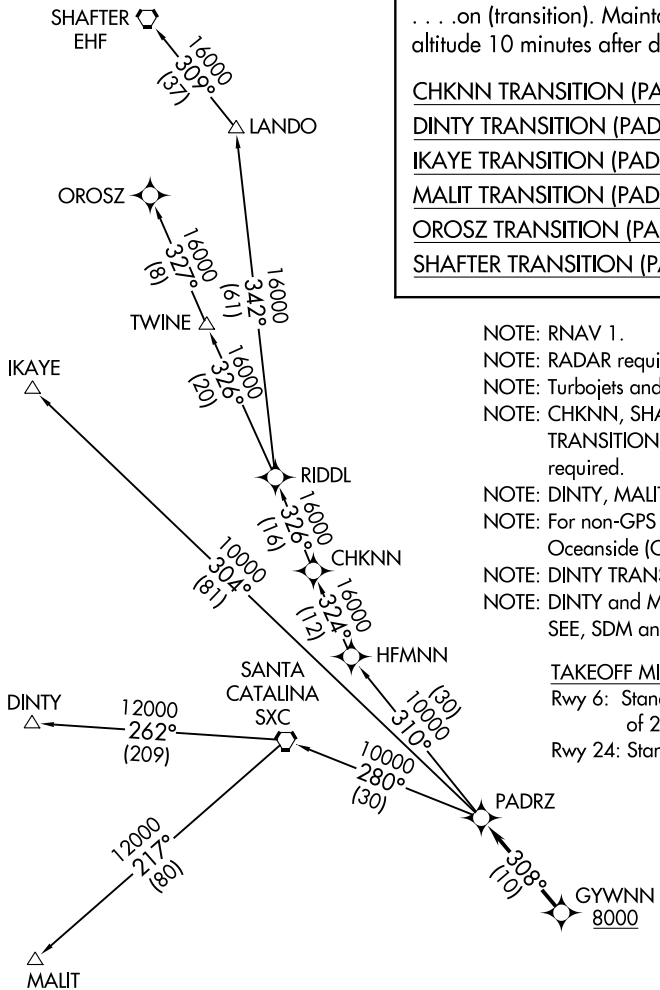
NOTE: DINTY TRANSITION ATC assigned only.

NOTE: DINTY and MALIT TRANSITIONS NA from  
SEE, SDM and RNM airports.

### TAKEOFF MINIMUMS

Rwy 6: Standard with minimum climb  
of 255' per NM to 1700.

Rwy 24: Standard.

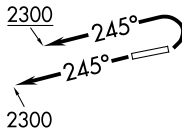


NOTE: RNAV 1.  
NOTE: RADAR required.  
NOTE: Turbojets and turboprops only.  
NOTE: CHKNN, SHAFTER, IKAYE, OROSZ  
TRANSITIONS: DME/DME/IRU or GPS  
required.  
NOTE: DINTY, MALIT TRANSITIONS: GPS only.  
NOTE: For non-GPS equipped aircraft,  
Oceanside (OCN) must be operational.  
NOTE: DINTY TRANSITION ATC assigned only.  
NOTE: DINTY and MALIT TRANSITIONS NA from  
SEE, SDM and RNM airports.

### TAKEOFF MINIMUMS

Rwy 6: Standard with minimum climb  
of 255' per NM to 1700.

Rwy 24: Standard.



NOTE: Chart not to scale.

# PADRZ TWO DEPARTURE (RNAV)

(PADRZ2.PADRZ) 07DEC17

CARLSBAD, CALIFORNIA  
MC CLELLAN-PALOMAR (CRQ)

SW-3, 22 APR 2021 to 20 MAY 2021

SW-3, 22 APR 2021 to 20 MAY 2021