

LOC I-CRG 111.7	APP CRS 321°	Rwy Idg TDZE Apt Elev	4008 41 41
---------------------------	------------------------	-----------------------------	---------------------------------------

ILS or LOC RWY 32

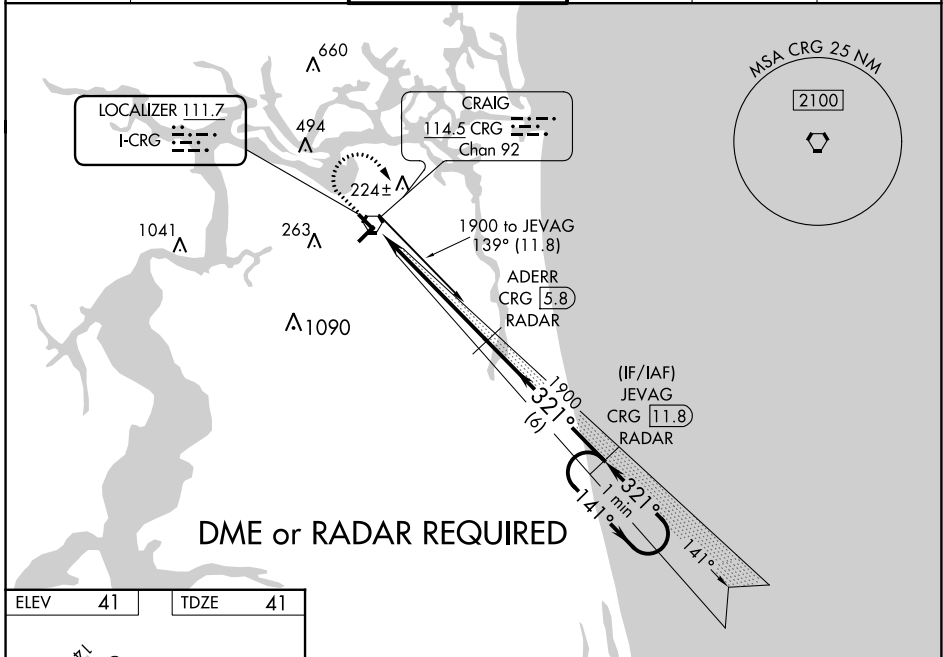
JACKSONVILLE EXEC AT CRAIG (CRG)

⚠ Night landing: Rwy 5 NA. DME or radar required. Helicopter visibility reduction below 1 SM NA. When local altimeter setting not received, use Jacksonville Intl altimeter setting: increase DA to 273 feet; increase all MDAs 40 feet and Circling visibility Cat C ¼ SM. For inop MALS, increase S-LOC 32 Cats C/D visibility to 1¼ mile. For inop MALS, when using Jacksonville Intl altimeter setting, increase S-LOC 32 Cats C/D visibility to 1⅜ mile.



MALS
MISSED APPROACH: Climb to 700 then climbing right turn to 1900 on heading 180° and on CRG VORTAC R-139 to JEVAG/CRG VORTAC 11.8 DME/RADAR and hold.

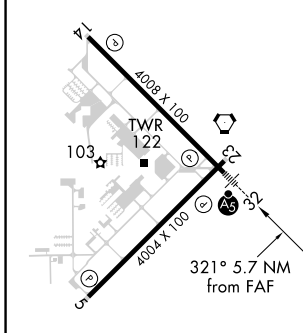
ATIS 125.4	JACKSONVILLE APP CON 124.9 308.4	CRAIG TOWER ★ 132.1 (CTAF) 269.525	GND CON 121.8	CLNC DEL 118.35	UNICOM 122.95
----------------------	--	---	-------------------------	---------------------------	-------------------------



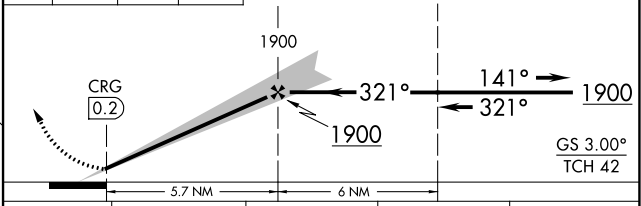
SE-3, 22 FEB 2024 to 21 MAR 2024

SE-3, 22 FEB 2024 to 21 MAR 2024

ELEV	41	TDZE	41
------	----	------	----



700	1900	CRG R-139	JEVAG CRG 11.8	ADERR CRG 5.8 RADAR	JEVAG CRG 11.8 RADAR	One Minute Holding Pattern
-----	------	-----------	----------------	---------------------	----------------------	----------------------------



FAF to MAP 5.7 NM					
Knots	60	90	120	150	180
Min:Sec	5:42	3:48	2:51	2:17	1:54
CATEGORY	A	B	C	D	
S-ILS 32		241-1	200 (200-1)		
S-LOC 32		480-1	439 (500-1)		
CIRCLING	500-1 459 (500-1)	600-1 559 (600-1)	620-1½ 579 (600-1½)	800-2½ 759 (800-2½)	

WAAS CH 63031 W14A	APP CRS 141°	Rwy Idg 4008 TDZE 41 Apt Elev 41
--	------------------------	---

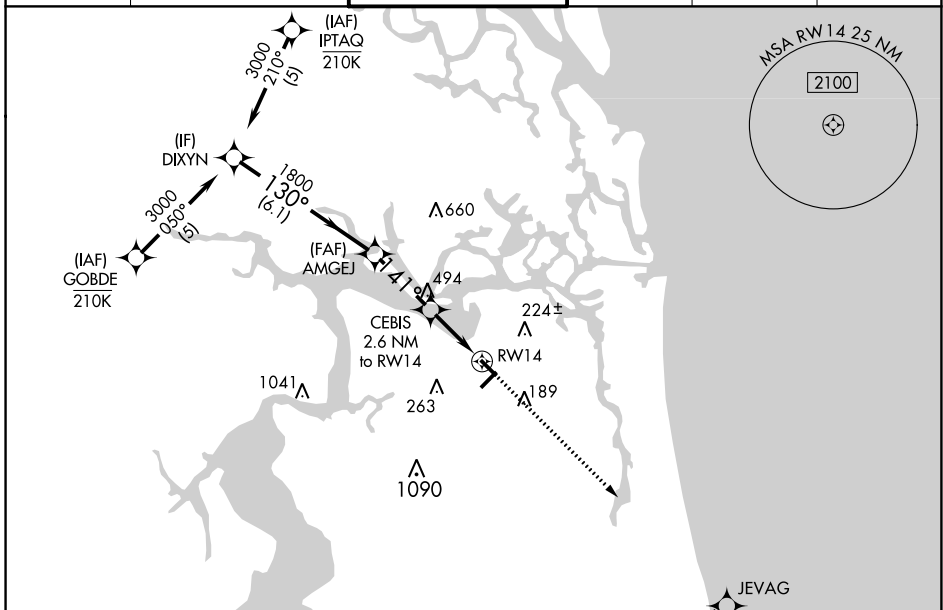
RNAV (GPS) RWY 14

JACKSONVILLE EXEC AT CRAIG (CRG)

Procedure NA at night. Baro-VNAV NA when using Jacksonville Intl altimeter setting. For uncompensated Baro-VNAV systems, LNAV/VNAV NA below -3°C (27°F) or above 54°C (130°F). DME/DME RNP-0.3 NA. Helicopter visibility reduction below 1 SM NA. When local altimeter setting not received, use Jacksonville Intl altimeter setting; increase LPV DA to 325 feet; increase LNAV/VNAV DA to 450 feet and all visibilities ½ SM; increase all MDAs 40 feet and Circling visibility Cat C ¼ SM.

MISSED APPROACH: Climb to 1900 direct JEVAG and hold.

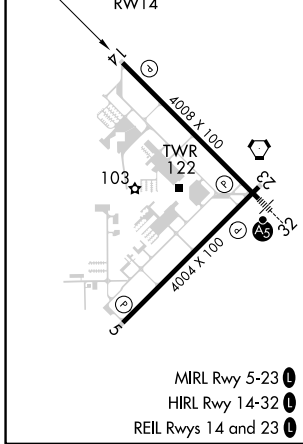
ATIS 125.4	JACKSONVILLE APP CON 124.9 308.4	CRAIG TOWER ★ 132.1 (CTAF) 269.525	GND CON 121.8	CLNC DEL 118.35	UNICOM 122.95
----------------------	--	--	-------------------------	---------------------------	-------------------------



SE-3, 22 FEB 2024 to 21 MAR 2024

SE-3, 22 FEB 2024 to 21 MAR 2024

ELEV	41	TDZE	41
------	----	------	----



RADAR REQUIRED

	DIXYN	AMGEJ	CEBIS 2.6 NM to RW14	RW14
	3000			
	130°			
	1800			
		141°		
			*900	
	6.1 NM	2.8 NM	2.6 NM	
GP 3.00°	TCH 44			
CATEGORY	A	B	C	D
LPV DA	293-1		252 (300-1)	
LNAV/VNAV DA	418-1¼		377 (400-1¼)	
LNAV MDA	500-1	459 (500-1)	500-1⅓	459 (500-1⅓)
CIRCLING	500-1 459 (500-1)	600-1 559 (600-1)	620-1½ 579 (600-1½)	800-2½ 759 (800-2½)


WAAS CH 57901 W32A	APP CRS 321°	Rwy Idg 4008 TDZE 41 Apt Elev 41
--	------------------------	---

RNAV (GPS) RWY 32

JACKSONVILLE EXEC AT CRAIG (CRG)

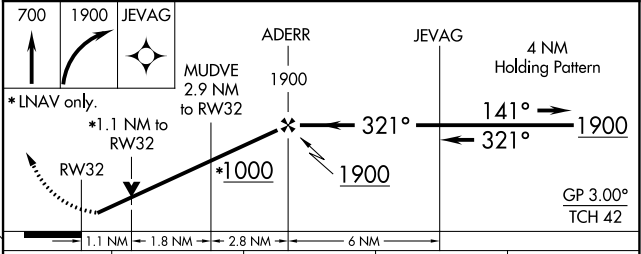
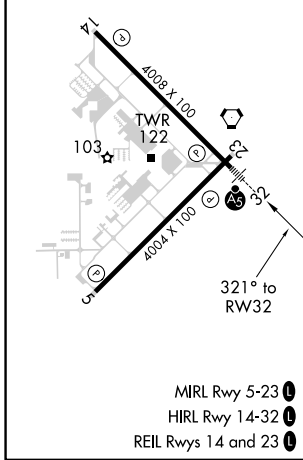
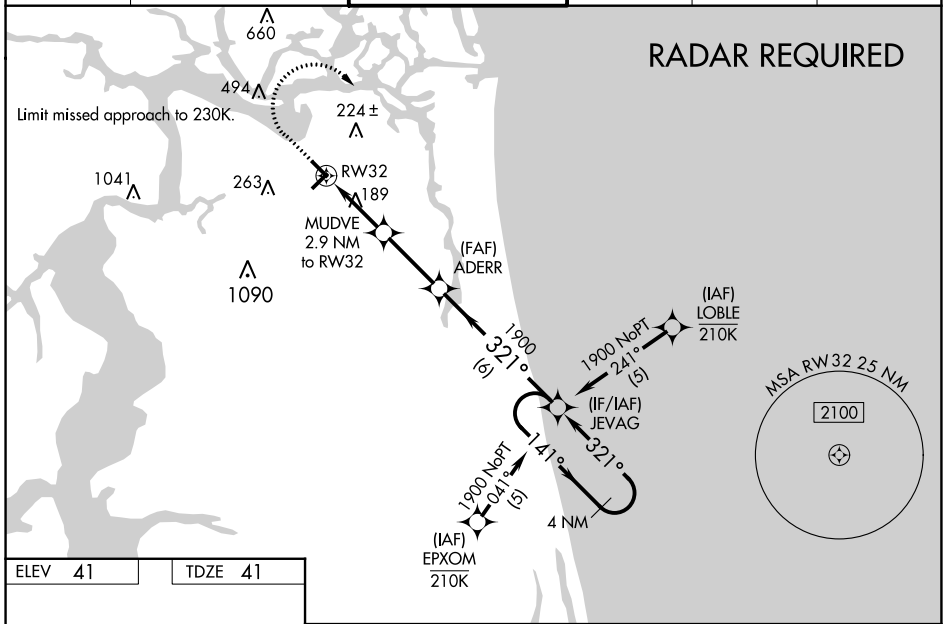
⚠ Night landing: Rwy 5 NA. Baro-VNAV and VDP NA when using Jacksonville Intl altimeter setting. For uncompensated Baro-VNAV systems, LNAV/VNAV NA below -3°C (27°F) or above 54°C (130°F). DME/DME RNP-0.3 NA. Helicopter visibility reduction below ¼ SM NA. VDP NA with Jacksonville Intl altimeter setting. When local altimeter setting not received, use Jacksonville Intl altimeter setting: increase LPV DA to 273 feet; increase LNAV/VNAV DA to 413 feet; increase all MDAs 40 feet and Circling visibility Cat C ¼ SM. For inop MALS, when using Jacksonville Intl altimeter setting, increase LNAV/VNAV all Cats visibility to 1½ and LNAV Cats C/D visibility to 1¼.

MALS



MISSED APPROACH:
Climb to 700 then climbing right turn to 1900 direct JEVAG and hold.

ATIS 125.4	JACKSONVILLE APP CON 124.9 308.4	CRAIG TOWER ★ 132.1 (CTAF) 269.525	GND CON 121.8	CLNC DEL 118.35	UNICOM 122.95
----------------------	--	--	-------------------------	---------------------------	-------------------------



CATEGORY	A	B	C	D
LPV DA		241-1	200 (200-1)	
LNAV/VNAV DA		381-1	340 (400-1)	
LNAV MDA		440-1	399 (400-1)	
CIRCLING	500-1 459 (500-1)	600-1 559 (600-1)	620-1½ 579 (600-1½)	800-2½ 759 (800-2½)

SE-3, 22 FEB 2024 to 21 MAR 2024

SE-3, 22 FEB 2024 to 21 MAR 2024

VORTAC CRG 114.5 Chan 92	APP CRS 132°	Rwy Idg TDZE 41 Apt Elev 41	4008
--	------------------------	---	-------------

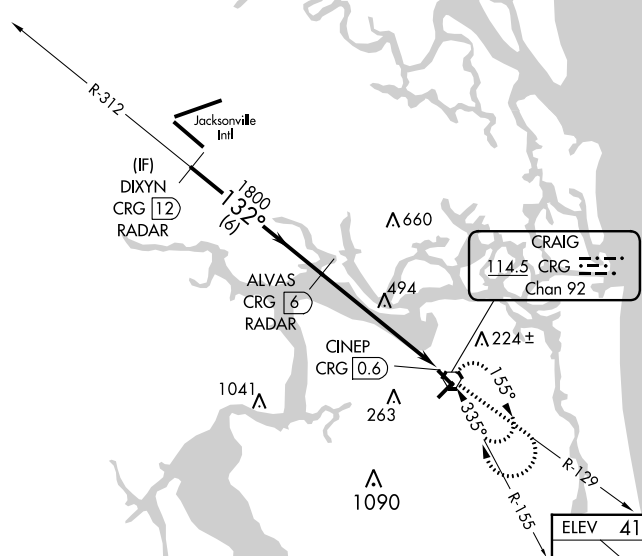
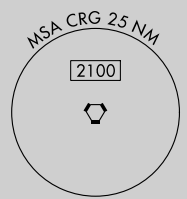
VOR RWY 14
JACKSONVILLE EXEC AT CRAIG (CRG)

Procedure NA at night.
DME or Radar required.
 Helicopter visibility reduction below 1 SM NA.

MISSED APPROACH: Climb to 2100 via CRG VORTAC R-129 then right turn direct CRG VORTAC and hold.

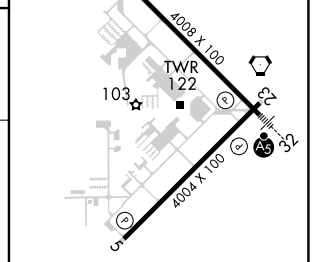
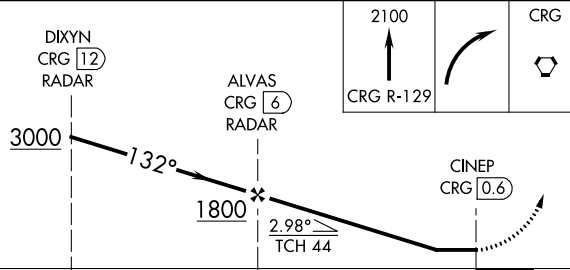
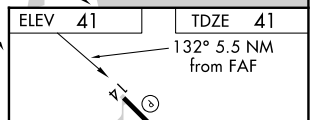
ATIS 125.4	JACKSONVILLE APP CON 124.9 308.4	CRAIG TOWER ★ 132.1 (CTAF) 269.525	GND CON 121.8	CLNC DEL 118.35	UNICOM 122.95
----------------------	--	---	-------------------------	---------------------------	-------------------------

RADAR REQUIRED



SE-3, 22 FEB 2024 to 21 MAR 2024

SE-3, 22 FEB 2024 to 21 MAR 2024



CATEGORY	A	B	C	D
S-14	800-1 759 (800-1)	800-1¼ 759 (800-1¼)	800-2½	759 (800-2½)
CIRCLING	800-1 759 (800-1)	800-1¼ 759 (800-1¼)	800-2½	759 (800-2½)

MIRL Rwy 5-23
 HIRL Rwy 14-32
 REIL Rws 14 and 23

FAF to MAP 5.5 NM

Knots	60	90	120	150	180
Min:Sec	5:30	3:40	2:45	2:12	1:50