

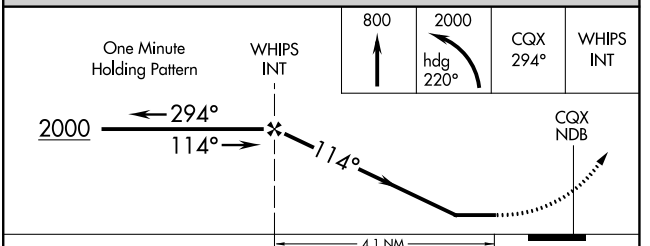
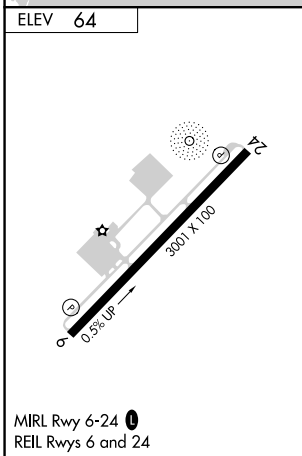
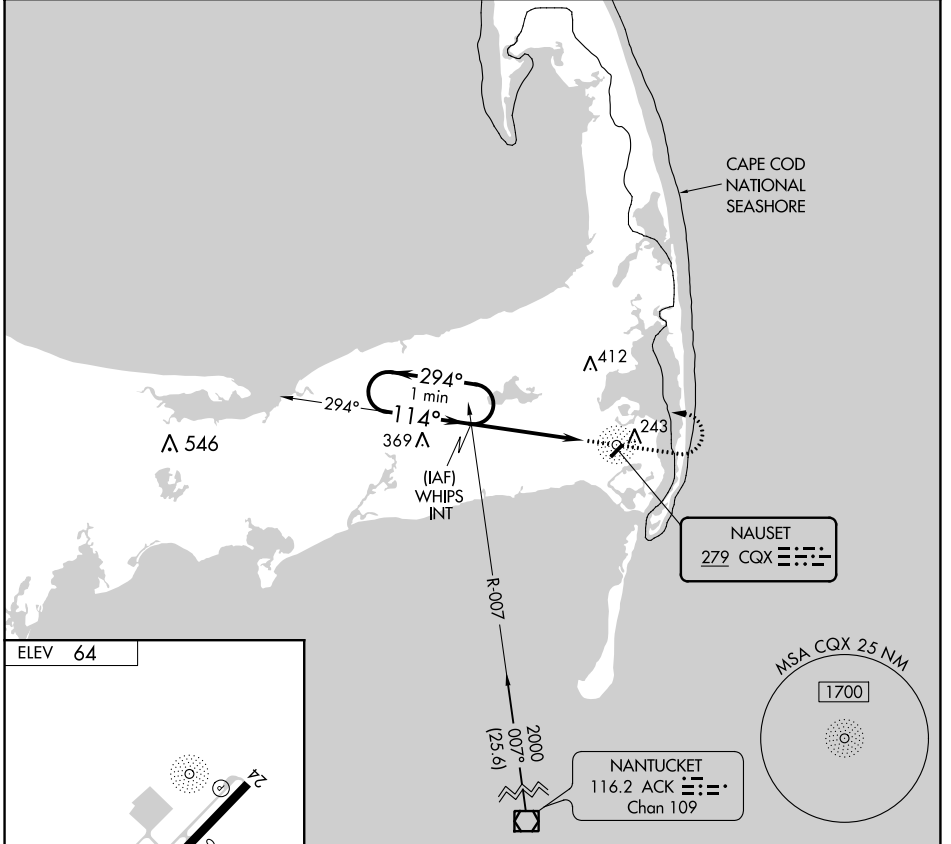
NDB CQX <b>279</b>	APP CRS <b>114°</b>	Rwy Idg TDZE Apt Elev	<b>N/A</b> <b>N/A</b> <b>64</b>
-----------------------	------------------------	-----------------------------	---------------------------------------

**NDB-A**  
CHATHAM MUNI (CQX)

**⚠ NA** When local altimeter setting not received, use Hyannis altimeter setting and increase all MDA 40 feet. When VGSI inop, procedure NA at night. Helicopter visibility reduction below 1 SM NA.

**MISSED APPROACH:** Climb to 800 then climbing left turn to 2000 heading 220° and 294° bearing from CQX NDB to WHIPS INT and hold.

ASOS <b>135.875</b>	BOSTON APP CON ★ <b>118.2</b>	CLNC DEL <b>127.3</b>	UNICOM <b>122.8</b> (CTAF)	<b>122.95</b> 0
------------------------	----------------------------------	--------------------------	-------------------------------	-----------------



FAF to MAP 4.1 NM					
Knots	60	90	120	150	180
Min:Sec	4:06	2:44	2:03	1:38	1:22

CATEGORY	A	B	C	D
CIRCLING	600-1½	536 (600-1½)	680-1¾ 616 (700-1¾)	680-2 616 (700-2)

NE-1, 09 SEP 2021 to 07 OCT 2021

NE-1, 09 SEP 2021 to 07 OCT 2021

APP CRS <b>240°</b>	Rwy Idg TDZE Apt Elev	<b>N/A</b> <b>N/A</b> <b>64</b>
------------------------	-----------------------------	---------------------------------------

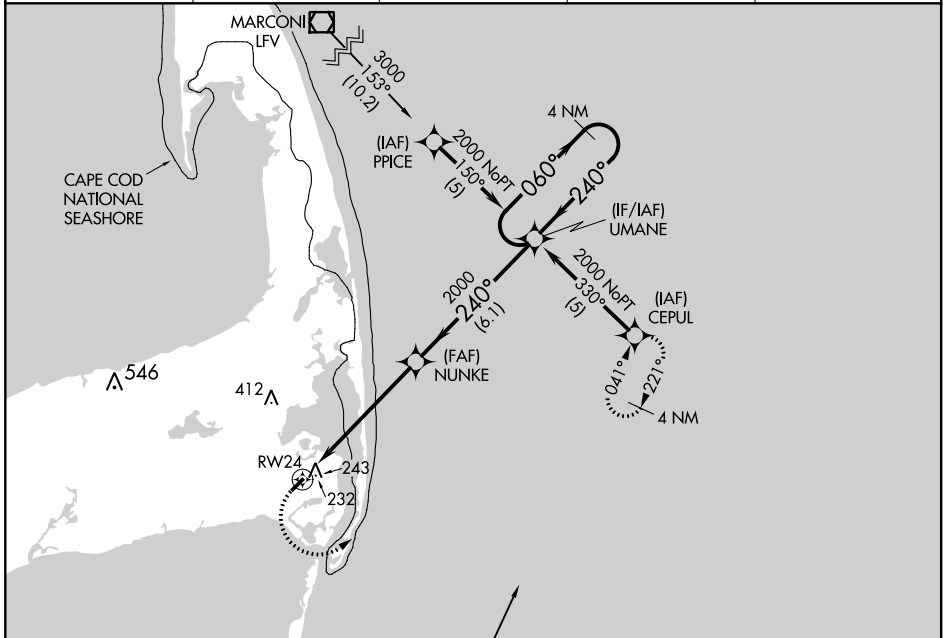
# RNAV (GPS)-B

CHATHAM MUNI (CQX)

**⚠** DME/DME RNP-0.3 NA. When local altimeter setting not received, use Hyannis altimeter setting and increase all MDA 40 feet. When VGSI inop, procedure NA at night. Helicopter visibility reduction below 1 SM NA.

**⚠** MISSED APPROACH: Climbing left turn to 3000 direct CEPUL and hold.

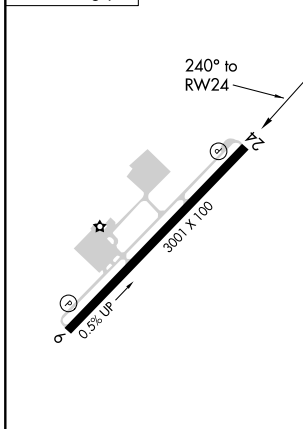
ASOS <b>135.875</b>	BOSTON APP CON ★ <b>118.2</b>	CLNC DEL <b>127.3</b>	UNICOM <b>122.8</b> (CTAF)	<b>122.95</b> <b>0</b>
------------------------	----------------------------------	--------------------------	-------------------------------	------------------------



NE-1, 09 SEP 2021 to 07 OCT 2021

NE-1, 09 SEP 2021 to 07 OCT 2021

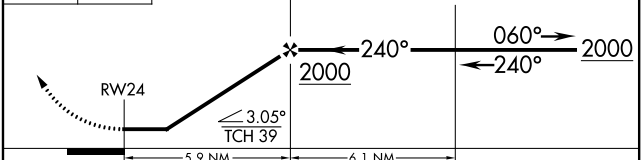
ELEV **64**



Procedure NA for arrivals at ACK VOR/DME on V141 southbound.

MSA RW 24 25 NM  
1700

3000 CEPUL VGSI and descent angles not coincident (VGSI Angle 3.50/TCH 39). 4 NM Holding Pattern



MIRL Rwy 6-24 <b>0</b> REIL Rws 6 and 24	CATEGORY	A	B	C	D
	CIRCLING	600-1	536 (600-1)	680-1 <sup>3</sup> / <sub>4</sub> 616 (700-1 <sup>3</sup> / <sub>4</sub> )	680-2 616 (700-2)