

APP CRS	Rwy ldg	4400
267°	TDZE	893
	Apt Elev	894

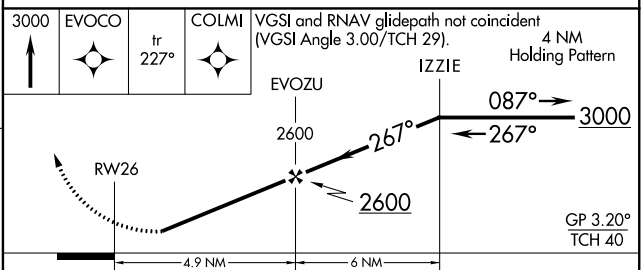
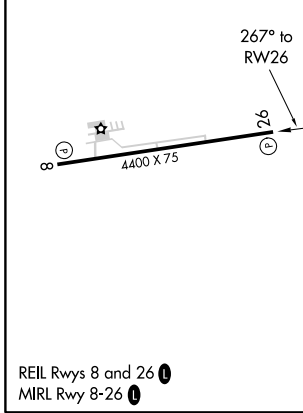
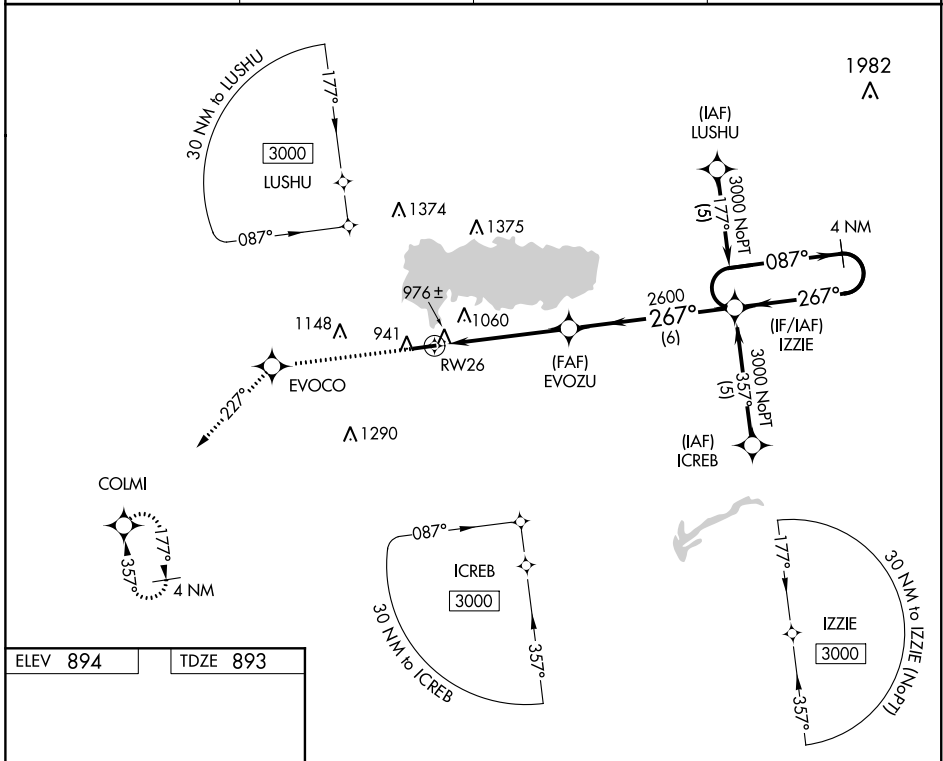
RNAV (GPS) RWY 26

LAKEFIELD (CQA)

⚠ DME/DME RNP-0.3 NA. Visibility reduction by helicopters NA. Baro-VNAV NA. Use Wapakoneta altimeter setting; when not received, use James M Cox Dayton Inl altimeter setting: increase LNAV/VNAV DA to 1349 feet and visibility all Cats ¼ SM; increase all MDA 80 feet and visibility LNAV and Circling Cat C ¼ SM.

⚠ MISSED APPROACH: Climb to 3000 direct EVOCO and on track 227° to COLMI and hold.

AXV AWO5-3PT 128.325	COLUMBUS APP CON 118.425 352.05	UNICOM 122.8 (CTAF)	123.3 0
--------------------------------	---	-------------------------------	-----------------------



CATEGORY	A	B	C	D
LNAV/VNAV DA	1277-1¼		384 (400-1¼)	NA
LNAV MDA	1260-1		367 (400-1)	NA
CIRCLING	1360-1 466 (500-1)	1400-1 506 (600-1)	1480-1½ 586 (600-1½)	NA

EC-2, 19 MAY 2022 to 16 JUN 2022

EC-2, 19 MAY 2022 to 16 JUN 2022

WAAS CH 61116 W08A	APP CRS 087°	Rwy Idg TDZE Apt Elev	4400 894 894
--	------------------------	-----------------------------	---

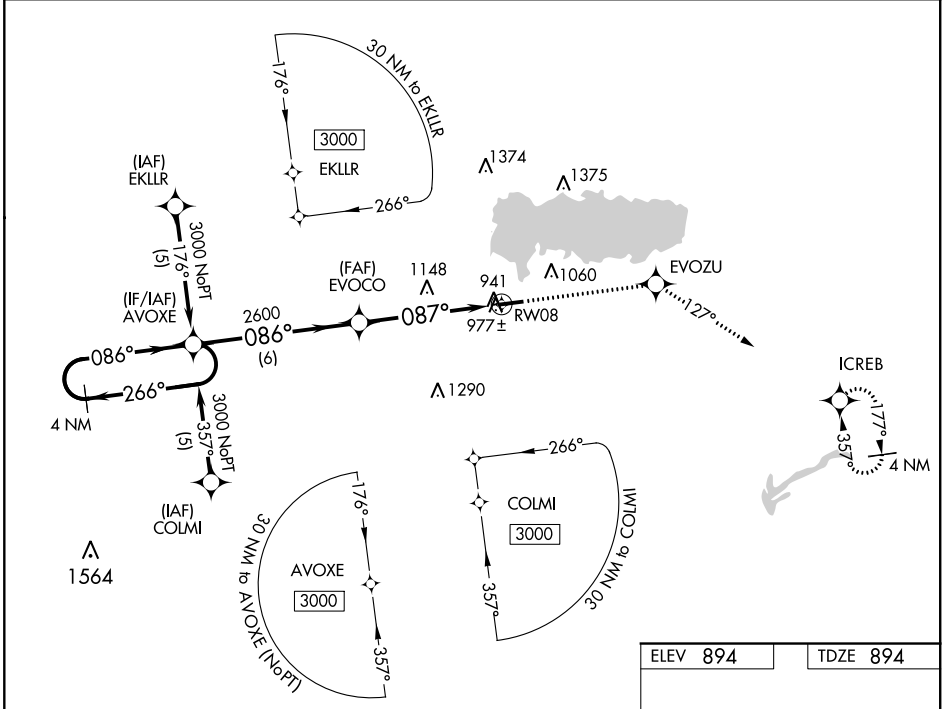
RNAV (GPS) RWY 8

LAKEFIELD (CQA)

NA DME/DME RNP-0.3 NA. Visibility reduction by helicopters NA. Baro-VNAV NA. Use Wapakoneta altimeter setting. When not received use James M Cox Dayton Intl altimeter setting and increase all DA 73 feet and all MDA 80 feet; increase LPV Cats A/B/C visibility ¼ mile, LNAV/VNAV Cats A/B/C visibility ½ mile and LNAV and Circling Cat C visibility ¼ mile.

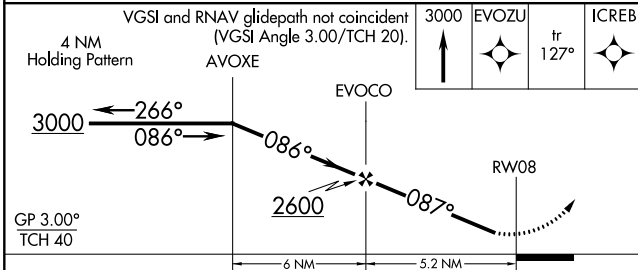
MISSED APPROACH: Climb to 3000 direct EVOZU and via track 127° to ICREB and hold.

AXV AWOS-3-PT 128.325	COLUMBUS APP CON 118.425 352.05	UNICOM 122.8 (CTAF)	123.3 0
---------------------------------	---	-------------------------------	-----------------------

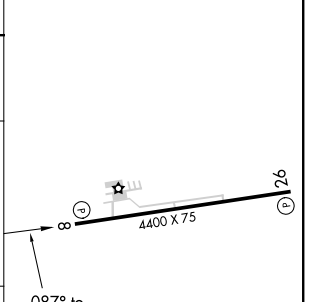


EC-2, 19 MAY 2022 to 16 JUN 2022

EC-2, 19 MAY 2022 to 16 JUN 2022



ELEV 894	TDZE 894
----------	----------



CATEGORY	A	B	C	D
LPV DA	1221-1¼	327 (400-1¼)		NA
LNAV/VNAV DA	1278-1¼	384 (400-1¼)		NA
LNAV MDA	1440-1	546 (600-1)	1440-1½ 546 (600-1½)	NA
CIRCLING	1440-1	546 (600-1)	1480-1½ 586 (600-1½)	NA

REIL Rwy 8 and 26 **0**

MIRL Rwy 8-26 **0**