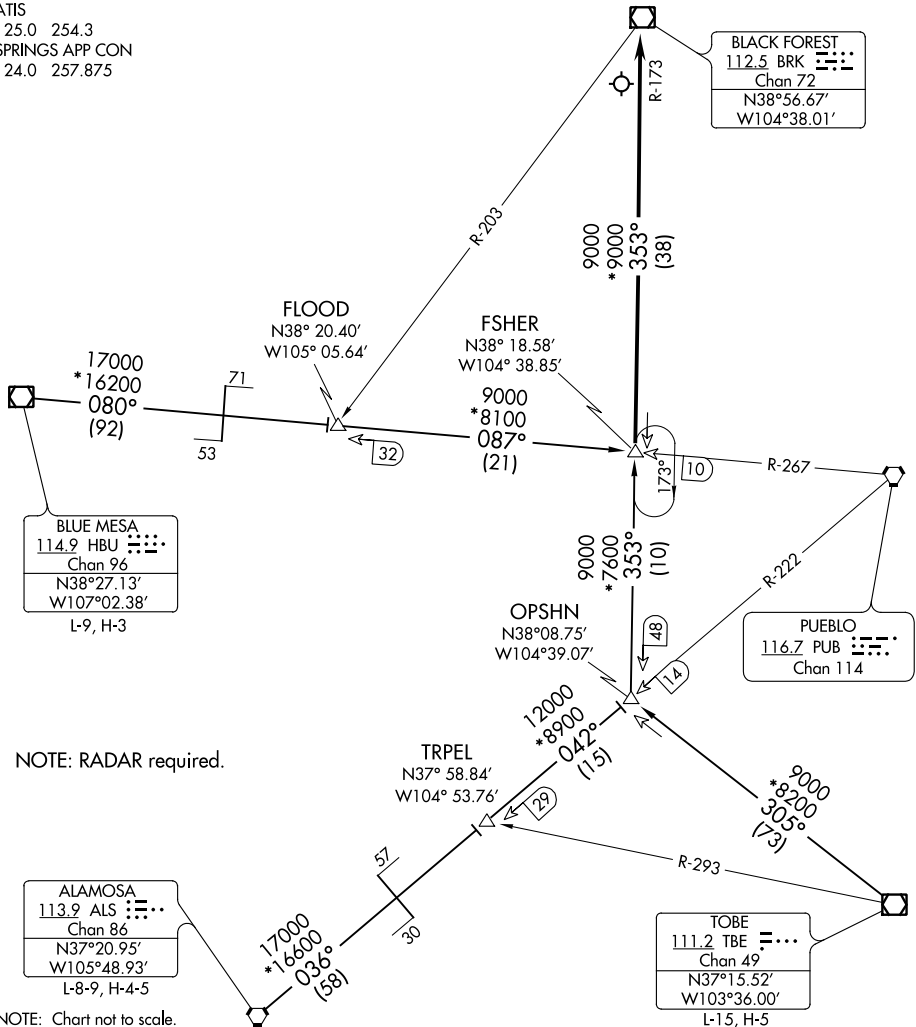


DEBERRY THREE ARRIVAL

AL-87 (FAA)

CITY OF COLORADO SPRINGS MUNI (COS)
COLORADO SPRINGS, COLORADO

ATIS
125.0 254.3
SPRINGS APP CON
124.0 257.875



SW-1, 13 AUG 2020 to 10 SEP 2020

SW-1, 13 AUG 2020 to 10 SEP 2020

NOTE: RADAR required.

NOTE: Chart not to scale.

ARRIVAL ROUTE DESCRIPTION

ALAMOSA TRANSITION (ALS.DBRY3): From over ALS VORTAC on ALS R-036 and PUB R-222 to TRPEL INT, then on PUB R-222 and BRK R-173 to FSHER INT. Thence. . .

BLUE MESA TRANSITION (HBU.DBRY3): From over HBU VOR/DME on HBU R-080 and PUB R-267 to FLOOD INT then on PUB R-267 to FSHER INT. Thence. . .

TOBE TRANSITION (TBE.DBRY3): From over TBE VOR/DME on TBE R-305 and BRK R-173 to FSHER INT. Thence. . .

. . . From over FSHER INT via BRK R-173 to BRK VOR/DME. Expect RADAR vectors to the final approach course at or before BRK VOR/DME.

LOST COMMUNICATIONS: Proceed to BRK VOR/DME.

DEBERRY THREE ARRIVAL

(FSHER.DBRY3) 26MAY16

COLORADO SPRINGS, COLORADO
CITY OF COLORADO SPRINGS MUNI (COS)

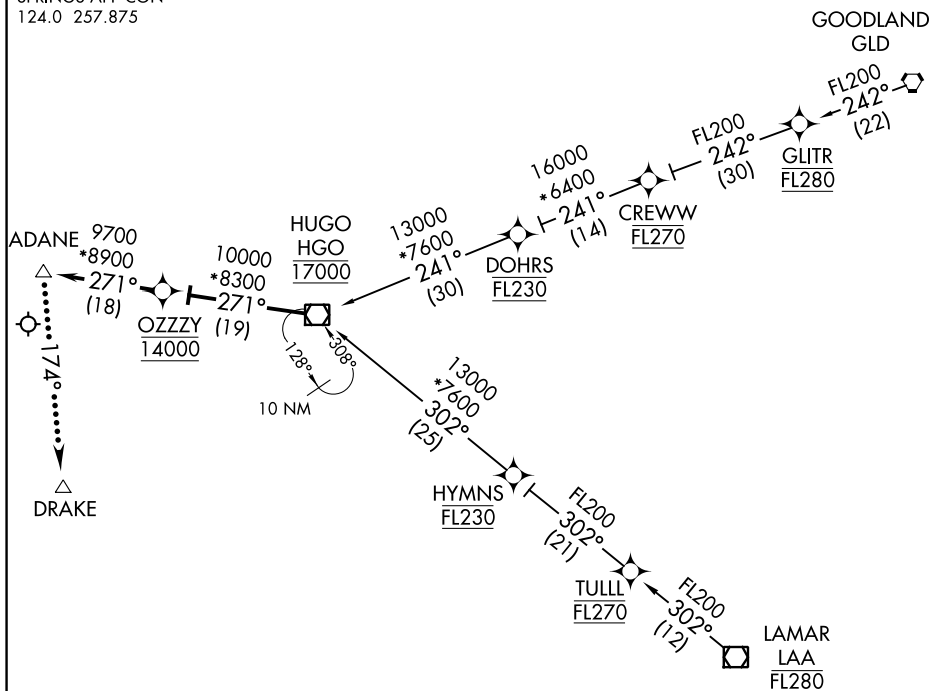
(HGO.OZZZY4) 17229

OZZZY FOUR ARRIVAL (RNAV)

AL-87 (FAA)

CITY OF COLORADO SPRINGS MUNI (COS)
COLORADO SPRINGS, COLORADO

ATIS
125.0 254.3
SPRINGS APP CON
124.0 257.875



- NOTE: RADAR required.
- NOTE: RNAV 1
- NOTE: GPS required.
- NOTE: Turbojet aircraft only.
- NOTE: Landing all other runways expect RADAR vectors prior to ADANE.

NOTE: Chart not to scale.

ARRIVAL ROUTE DESCRIPTION

GOODLAND TRANSITION (GLD.OZZZY4)

LAMAR TRANSITION (LAA.OZZZY4)

From over HGO VOR/DME on track 271° to cross OZZZY at 14000, then on track 271° to ADANE. Expect ILS RWY 17L or RWY 17R Visual Approach as assigned by ATC.

LOST COMMUNICATIONS

Landing South: At ADANE join and execute ILS RWY 17L approach.

Landing North: At ADANE fly on 174° track to DRAKE.

At DRAKE join and execute ILS RWY 35L approach.

OZZZY FOUR ARRIVAL (RNAV)

(HGO.OZZZY4) 17AUG17

COLORADO SPRINGS, COLORADO
CITY OF COLORADO SPRINGS MUNI (COS)

SW-1, 13 AUG 2020 to 10 SEP 2020

SW-1, 13 AUG 2020 to 10 SEP 2020