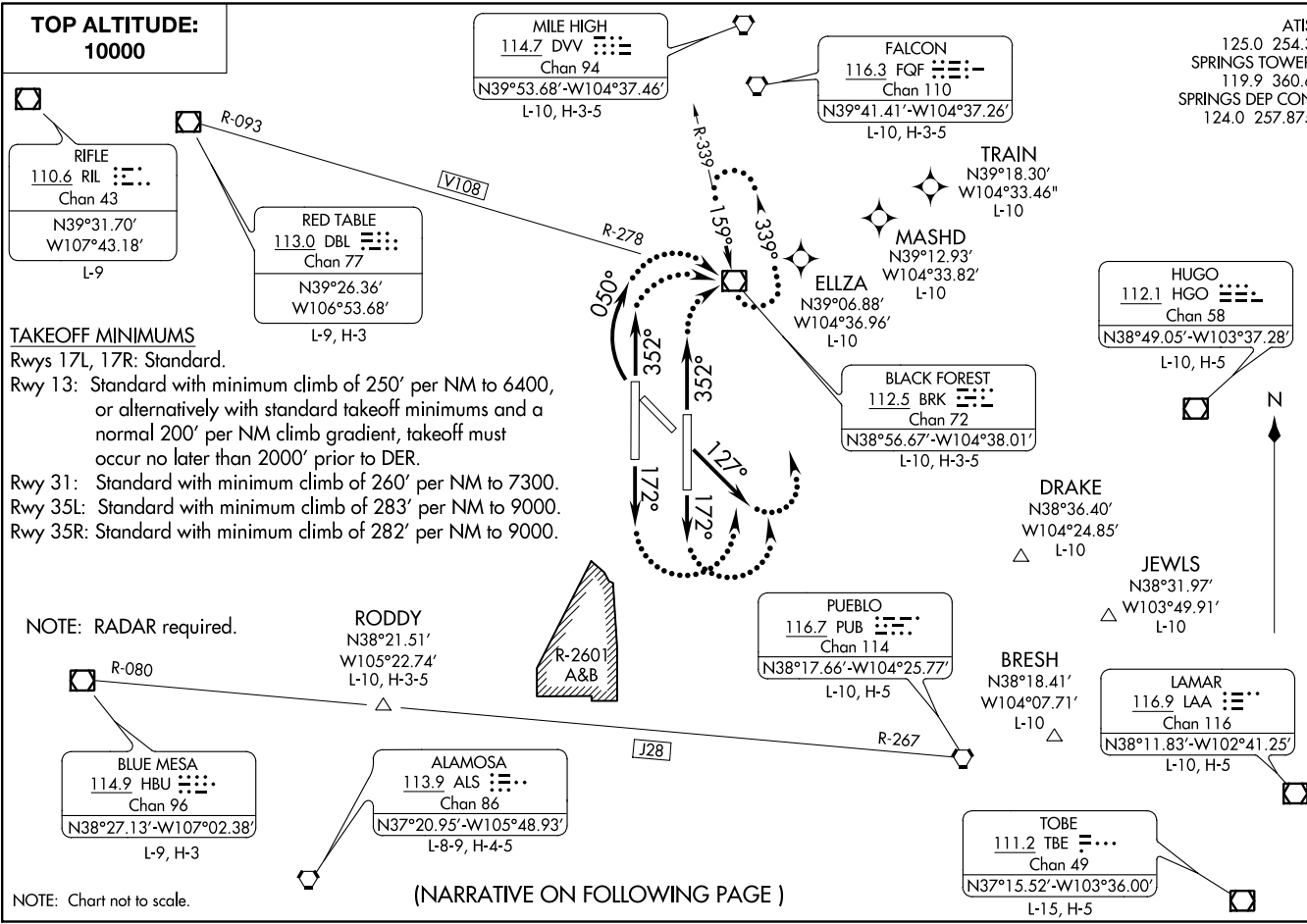


(COS6, BRK) 1 8088
 SPRINGS SIX DEPARTURE
 AL-87 (FAAN)
 CITY OF COLORADO SPRINGS MUNI (COS)
 COLORADO SPRINGS, COLORADO

ATIS 125.0 254.3
 SPRINGS TOWER 119.9 360.6
 SPRINGS DEP CON 124.0 257.875



TOP ALTITUDE:
10000

MILE HIGH
 114.7 DVV
 Chan 94
 N39°53.68'-W104°37.46'
 L-10, H-3-5

FALCON
 116.3 FQF
 Chan 110
 N39°41.41'-W104°37.26'
 L-10, H-3-5

TRAIN
 N39°18.30'
 W104°33.46'
 L-10

MASHD
 N39°12.93'
 W104°33.82'
 L-10

ELZA
 N39°06.88'
 W104°36.96'
 L-10

BLACK FOREST
 112.5 BRK
 Chan 72
 N38°56.67'-W104°38.01'
 L-10, H-3-5

HUGO
 112.1 HGO
 Chan 58
 N38°49.05'-W103°37.28'
 L-10, H-5

DRAKE
 N38°36.40'
 W104°24.85'
 L-10

JEWLS
 N38°31.97'
 W103°49.91'
 L-10

PUEBLO
 116.7 PUB
 Chan 114
 N38°17.66'-W104°25.77'
 L-10, H-5

BRESH
 N38°18.41'
 W104°07.71'
 L-10

LAMAR
 116.9 LAA
 Chan 116
 N38°11.83'-W102°41.25'
 L-10, H-5

TOPE
 111.2 TBE
 Chan 49
 N37°15.52'-W103°36.00'
 L-15, H-5

RED TABLE
 113.0 DBL
 Chan 77
 N39°26.36'
 W106°53.68'
 L-9, H-3

RIFLE
 110.6 RIL
 Chan 43
 N39°31.70'
 W107°43.18'
 L-9

RODDY
 N38°21.51'
 W105°22.74'
 L-10, H-3-5

ALAMOSA
 113.9 ALS
 Chan 86
 N37°20.95'-W105°48.93'
 L-8-9, H-4-5

BLUE MESA
 114.9 HBU
 Chan 96
 N38°27.13'-W107°02.38'
 L-9, H-3

TAKEOFF MINIMUMS

Rwys 17L, 17R: Standard.
 Rwy 13: Standard with minimum climb of 250' per NM to 6400, or alternatively with standard takeoff minimums and a normal 200' per NM climb gradient, takeoff must occur no later than 2000' prior to DER.
 Rwy 31: Standard with minimum climb of 260' per NM to 7300.
 Rwy 35L: Standard with minimum climb of 283' per NM to 9000.
 Rwy 35R: Standard with minimum climb of 282' per NM to 9000.

NOTE: RADAR required.

NOTE: Chart not to scale.

(NARRATIVE ON FOLLOWING PAGE)

SPRINGS SIX DEPARTURE
 (COS6, BRK) 29MAR18
 COLORADO SPRINGS, COLORADO
 CITY OF COLORADO SPRINGS MUNI (COS)



DEPARTURE ROUTE DESCRIPTION

TAKEOFF RUNWAY 13: Climb heading 127° for RADAR vectors to filed/assigned route, thence. . . .

TAKEOFF RUNWAY 17L: Climb heading 172° for RADAR vectors to filed/assigned route, thence. . . .

TAKEOFF RUNWAY 17R: Climb heading 172° for RADAR vectors to filed/assigned route, thence. . . .

TAKEOFF RUNWAY 35R: Climb heading 352° for RADAR vectors to filed/assigned route, thence. . . .

TAKEOFF RUNWAY 35L: Climb heading 352° for RADAR vectors to filed/assigned route, thence. . . .

TAKEOFF RUNWAY 31: Climbing right turn heading 050° for RADAR vectors to filed/assigned route, thence. . . .

. . . . maintain 10000. Expect clearance to filed altitude/flight level ten minutes after departure.

LOST COMMUNICATIONS: If not in contact with departure control within 1 minute after departure from runways 13 and 17L/R turn left, from runway 31 and 35L/R turn right direct BRK VOR/DME, thence via filed/assigned route.

AIRCRAFT FILED V108 WESTBOUND: Continue climb in holding pattern to cross BRK VOR/DME at or above 14000.

SW-1, 13 AUG 2020 to 10 SEP 2020

SW-1, 13 AUG 2020 to 10 SEP 2020