

LOC I-COE 110.7	APP CRS 051°	Rwy Idg 7400
		TDZE 2290
		Apt Elev 2320

ILS or LOC/DME RWY 6

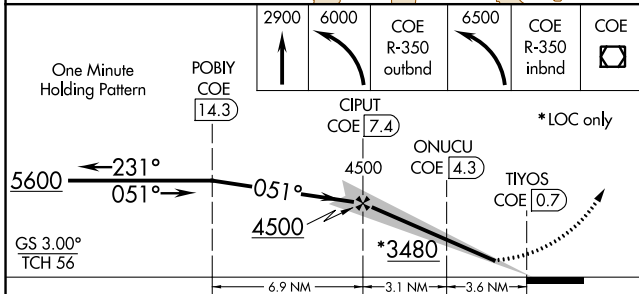
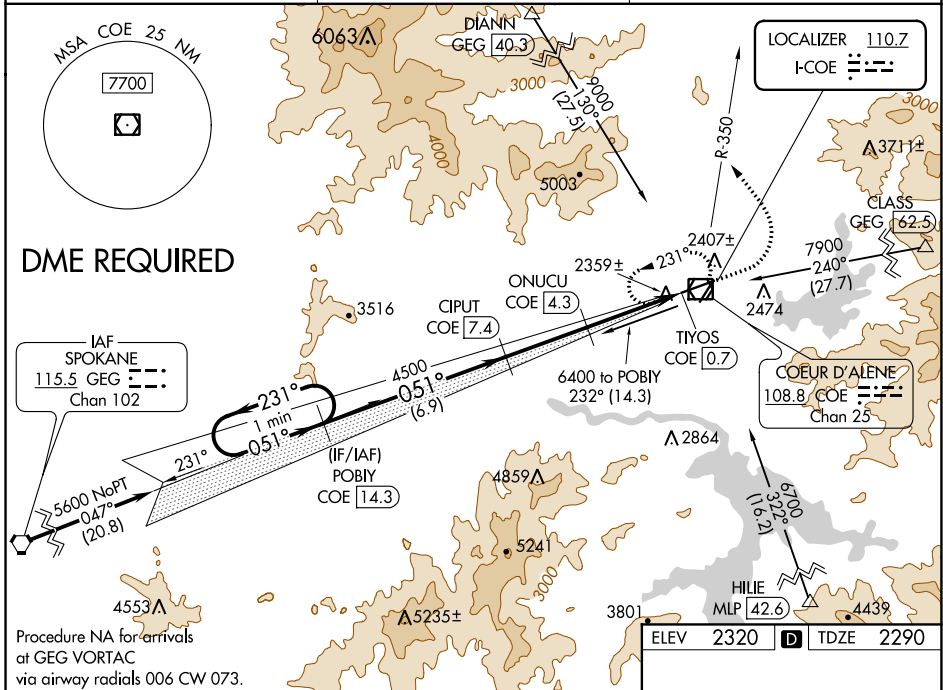
COEUR D'ALENE/PAPPY BOYINGTON FLD (COE)

⚠ DME from COE VOR/DME. Simultaneous reception of I-COE and COE DME required. Autopilot coupled approach NA below 2840. When local altimeter setting not received, use Spokane Intl altimeter setting and increase all DA/MDA 80 feet and all visibilities ¼ mile. Circling Rwy 2, NA at night. Circling NA for Cat D southeast of Rwy 6-24.



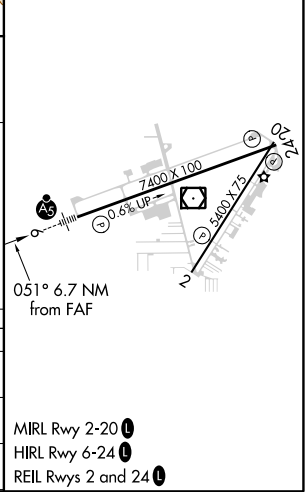
MISSED APPROACH: Climb to 2900 then climbing left turn to 6000 via COE R-350 outbound then climbing left turn to 6500 via COE R-350 inbound to COE VOR/DME and hold.

AWOS-3PT 135.075	SPOKANE APP CON 132.1 263.0	UNICOM 122.8 (CTAF)
----------------------------	---------------------------------------	-------------------------------



ELEV	2320	TDZE	2290
------	------	------	------

CATEGORY	A	B	C	D
S-ILS 6		2490-½	200 (200-½)	
S-LOC 6	2860-½	570 (600-½)	2860-1 570 (600-1)	2860-1¼ 570 (600-1¼)
CIRCLING	2860-1 540 (600-1)	2880-1 560 (600-1)	3020-2 700 (700-2)	3180-2¾ 860 (900-2¾)



NW-1, 30 DEC 2021 to 27 JAN 2022

NW-1, 30 DEC 2021 to 27 JAN 2022

WAAS CH 70608 W06A	APP CRS 051°	Rwy Idg 7400 TDZE 2291 Apt Elev 2320
--	------------------------	---

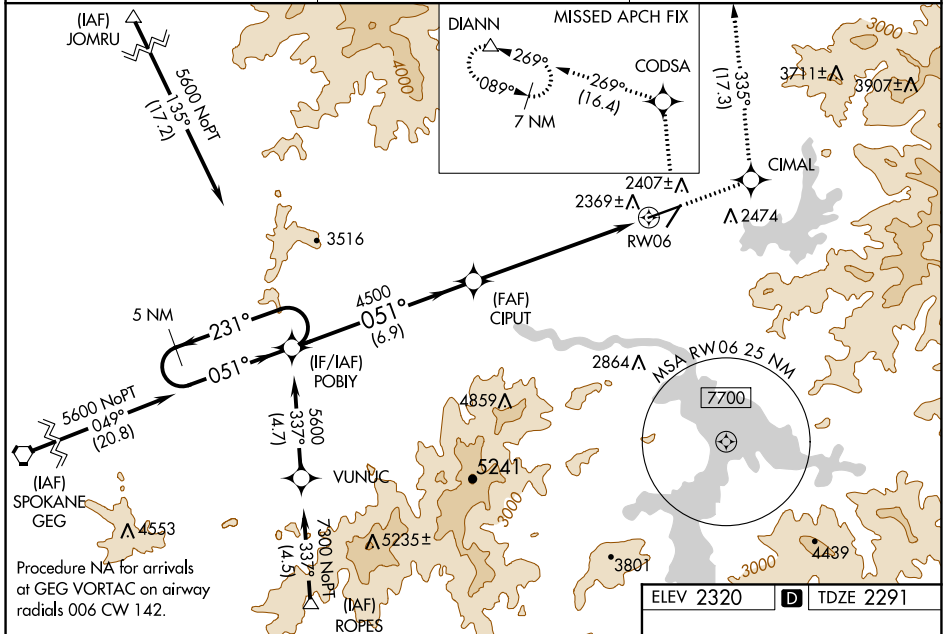
RNAV (GPS) RWY 6

COEUR D'ALENE/PAPPY BOYINGTON FLD (COE)

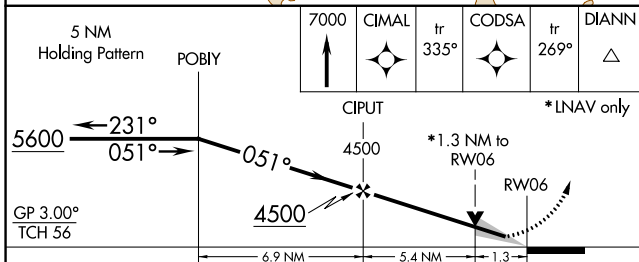
⚠ For uncompensated Baro-VNAV systems, LNAV/VNAV NA below -21°C (-5°F) or above 53°C (127°F). DME/DME RNP-0.3 NA. When local altimeter setting not received, use Spokane Intl altimeter setting and increase all DA/MDA 80 feet. Increase LNAV/VNAV all Cats visibility 1/4 mile, LNAV Cat C/D visibility 1/8 mile, and Circling Cat C visibility 1/4 mile. Baro-VNAV and VDP NA when using Spokane Intl altimeter setting. Night landing: Rwy 2 NA. Circling NA for Cat D southeast of Rwy 6-24.

MALSR
MISSED APPROACH: Climb to 7000 direct CIMAL and on track 335° to CODSA and on track 269° to DIANN and on track 269° to DIANN and hold.

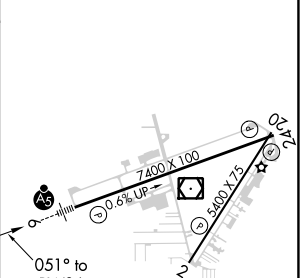
AWOS-3PT 135.075	SPOKANE APP CON 132.1 263.0	UNICOM 122.8 (CTAF)
----------------------------	---------------------------------------	-------------------------------



Procedure NA for arrivals at GEG VORTAC on airway radials 006 CW 142.



ELEV 2320	D	TDZE 2291
-----------	----------	-----------



CATEGORY	A	B	C	D
LPV DA		2491-1/2	200 (200-1/2)	
LNAV/VNAV DA		2654-3/4	363 (400-3/4)	
LNAV MDA	2740-1/2	449 (500-1/2)	2740-1	449 (500-1)
CIRCLING	2740-1 420 (500-1)	2880-1 560 (600-1)	3020-2 700 (700-2)	3180-2 3/4 860 (900-2 3/4)

MIRL Rwy 2-20 **ⓘ**
HIREL Rwy 6-24 **ⓘ**
REIL Rws 2 and 24 **ⓘ**

NW-1, 30 DEC 2021 to 27 JAN 2022

NW-1, 30 DEC 2021 to 27 JAN 2022