

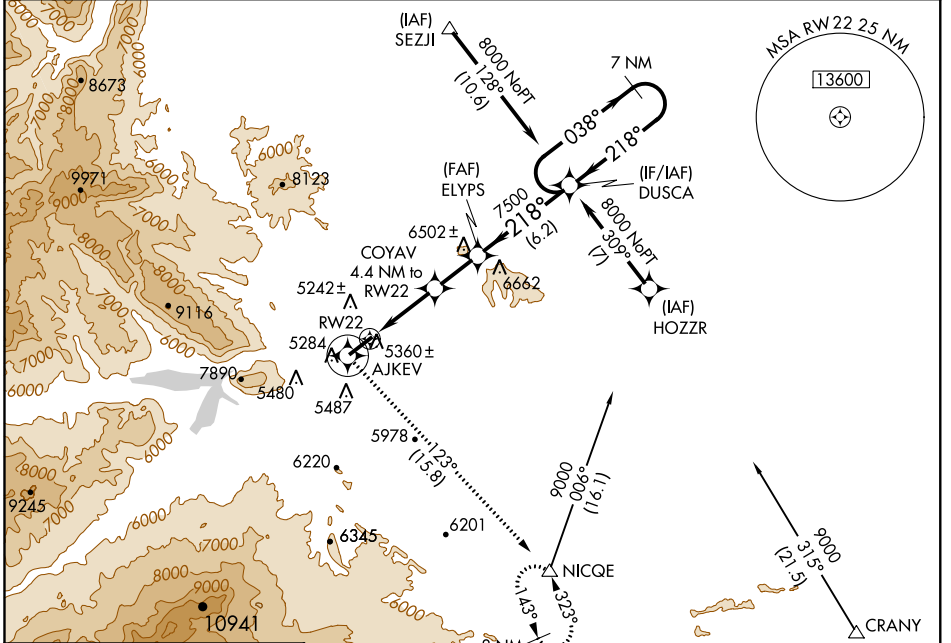
WAAS CH 93600 W22A	APP CRS 218°	Rwy ldg TDZE Apt Elev 7178 5076 5102
--	------------------------	--

RNAV (GPS) RWY 22

YELLOWSTONE RGNL (COD)

-31°C DME/DME RNP- 0.3 NA.	MISSED APPROACH: Climb to 9600 direct AJKEV and left turn via 123° track to NICQE and hold.
-------------------------------	---

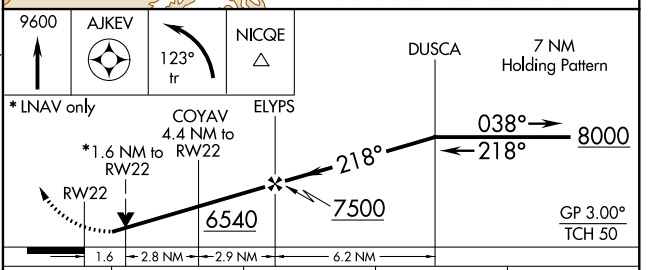
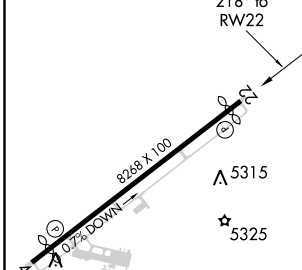
AWOS-3PT 135.075	SALT LAKE CENTER 127.75 351.9	UNICOM 122.8 (CTAF)
----------------------------	---	-------------------------------



NW-1, 01 FEB 2018 to 01 MAR 2018

NW-1, 01 FEB 2018 to 01 MAR 2018

ELEV 5102		TDZE 5076
-----------	--	-----------



CATEGORY	A	B	C	D
LPV DA	5457-1¼ 381 (400-1¼)			
RNAV/ VNAV DA	NA			
RNAV MDA	5620-1	544 (600-1)	5620-1½ 544 (600-1½)	5620-1¾ 544 (600-1¾)
CIRCLING	5840-1¼	738 (800-1¼)	5900-2¼ 798 (800-2¼)	5960-2¾ 858 (900-2¾)

REIL Rwy 4 and 22
HIRL Rwy 4-22

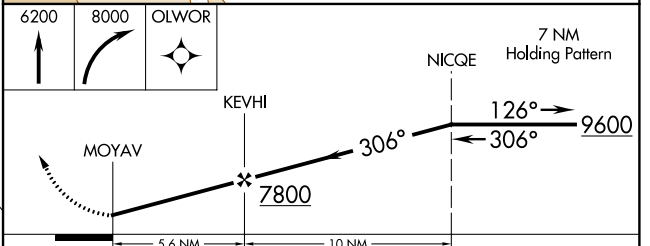
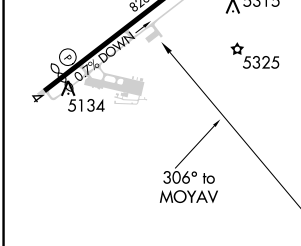
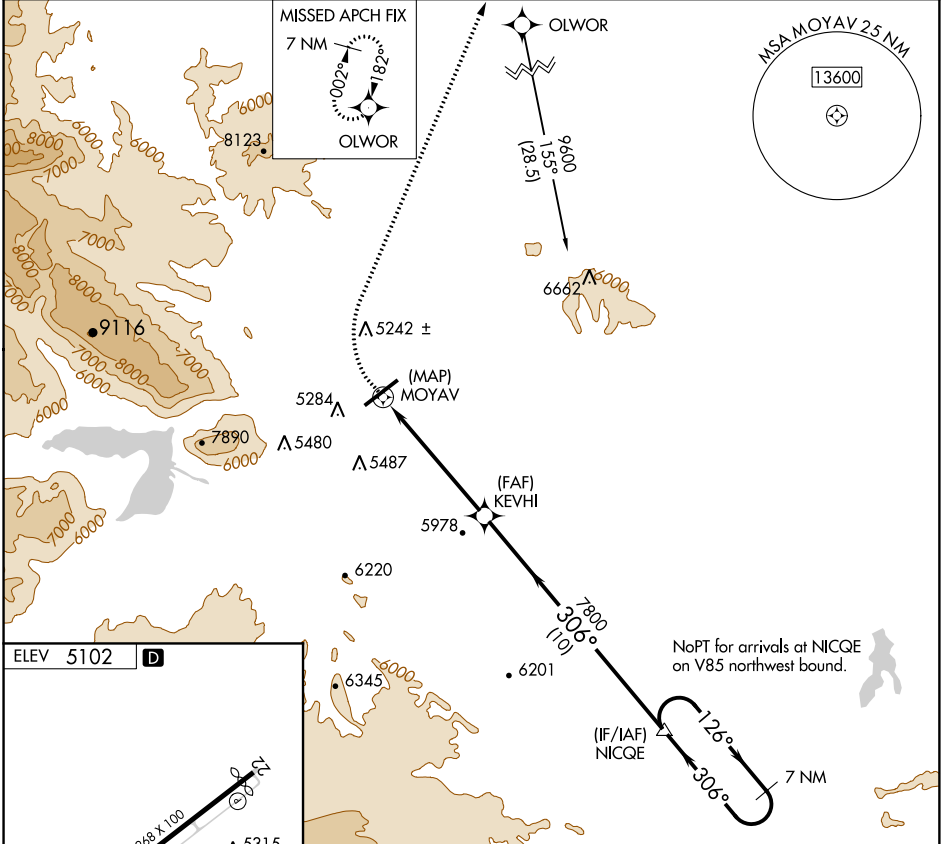
APP CRS 306°	Rwy Idg TDZE Apt Elev	N/A N/A 5102
------------------------	-----------------------------	---

RNAV (GPS)-B

YELLOWSTONE RGNL (COD)

-31°C	When local altimeter setting not received, procedure NA. DME/DME RNP-0.3 NA.	MISSED APPROACH: Climb to 6200 then climbing right turn to 8000 direct OLVOR and hold.
-------	--	--

AWOS-3PT 135.075	SALT LAKE CENTER 127.75 351.9	UNICOM 122.8 (CTAF)
----------------------------	---	-------------------------------



REIL Rwys 4 and 22	HIRL Rwy 4-22			
CATEGORY	A	B	C	D
CIRCLING	6180-1¼ 1078 (1100-1¼)	6180-1½ 1078 (1100-1½)	6180-3	1078 (1100-3)

NW-1, 01 FEB 2018 to 01 MAR 2018

NW-1, 01 FEB 2018 to 01 MAR 2018

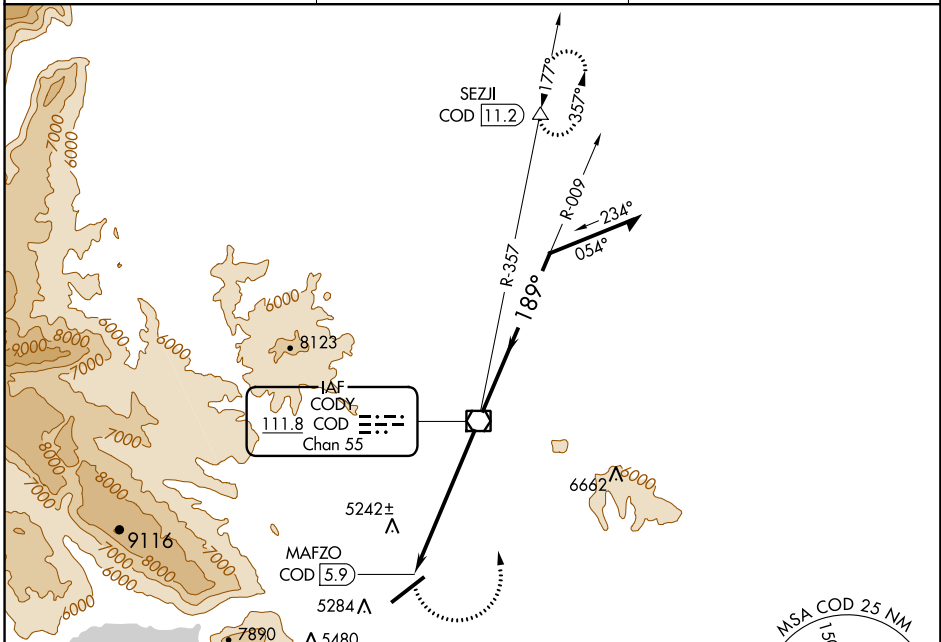
VOR/DME COD 111.8 Chan 55	APP CRS 189°	Rwy Idg TDZE Apt Elev N/A N/A 5102
---	------------------------	--

VOR-A
YELLOWSTONE RGNL (COD)

When local altimeter setting not received, procedure NA. DME required.

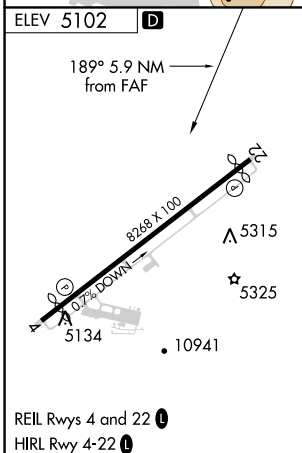
MISSED APPROACH: Climbing left turn to 8400 direct COD VOR/DME and on COD VOR/DME R-357 to SEZJI/COD 11.2 DME and hold.

AWOS-3PT 135.075	SALT LAKE CENTER 127.75 351.9	UNICOM 122.8 (CTAF)
----------------------------	---	-------------------------------

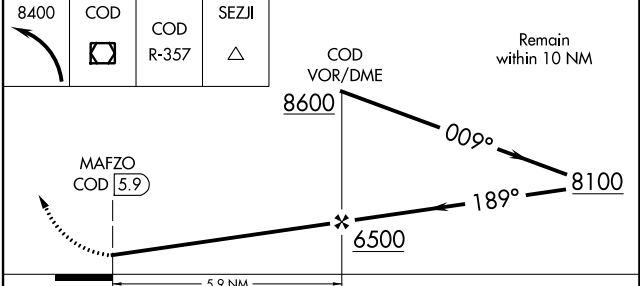


NW-1, 01 FEB 2018 to 01 MAR 2018

NW-1, 01 FEB 2018 to 01 MAR 2018



FAF to MAP 5.9 NM					
Knots	60	90	120	150	180
Min:Sec	5:54	3:56	2:57	2:22	1:58



CATEGORY	A	B	C	D
CIRCLING	5800-1	698 (700-1)	5800-2 698 (700-2)	5920-2¾ 818 (900-2¾)