

APP CRS 039°	Rwy Idg 7100
	TDZE 4557
	Apt Elev 4557

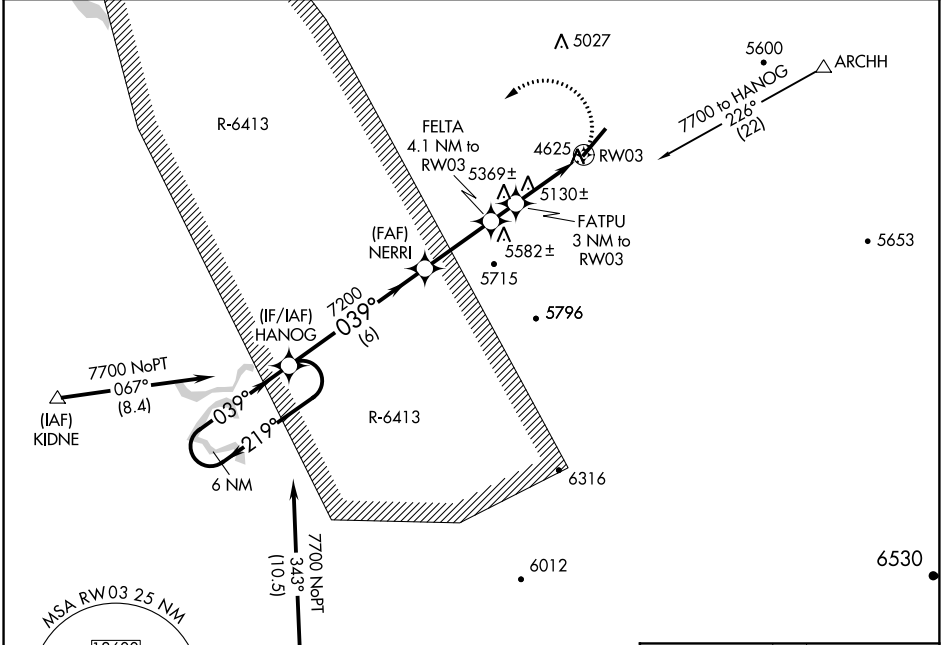
RNAV (GPS) RWY 3

CANYONLANDS FIELD (CNY)

NA DME/DME RNP-0.3 NA. Procedure NA when R-6413 in operation. Helicopter visibility reduction below 3/4 SM NA.

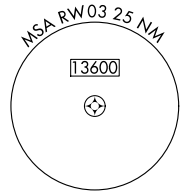
MISSED APPROACH: Climbing left turn to 7700 direct HANOG WP and hold.

ASOS 118.525	DENVER CENTER 134.5 327.8	UNICOM 122.8 (CTAF)
------------------------	-------------------------------------	-------------------------------

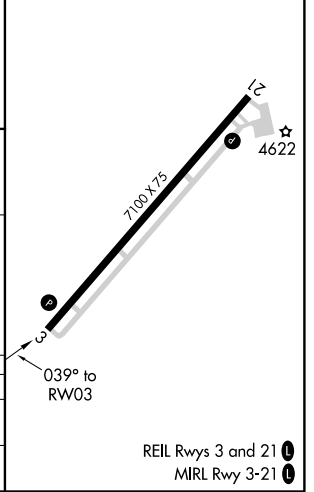
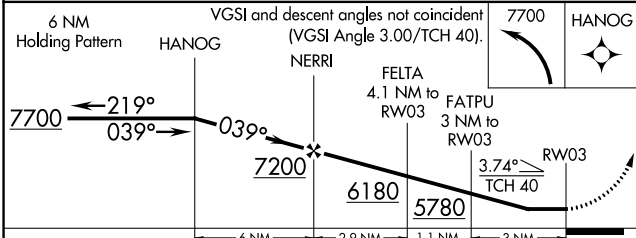


SW-4, 01 MAR 2018 to 29 MAR 2018

SW-4, 01 MAR 2018 to 29 MAR 2018



ELEV 4557	D TDZE 4557
-----------	--------------------



CATEGORY	A	B	C	D
LNVA MDA	5380-1 823 (900-1)	5380-1¼ 823 (900-1¼)	5380-2½ 823 (900-2½)	823 (900-2½)
CIRCLING	5380-1¼ 823 (900-1¼)		5380-2½ 823 (900-2½)	5440-3 883 (900-3)

REIL Rwy 3 and 21 **D**
MIRL Rwy 3-21 **D**

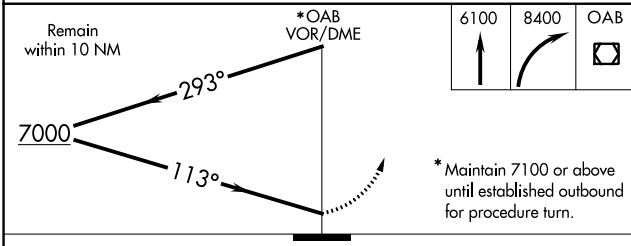
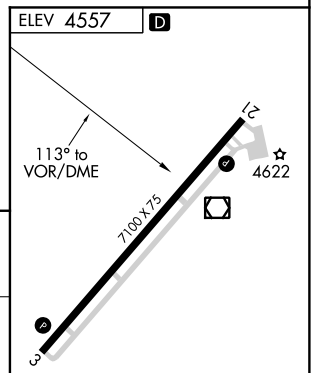
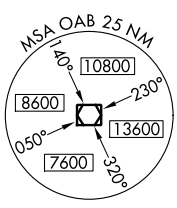
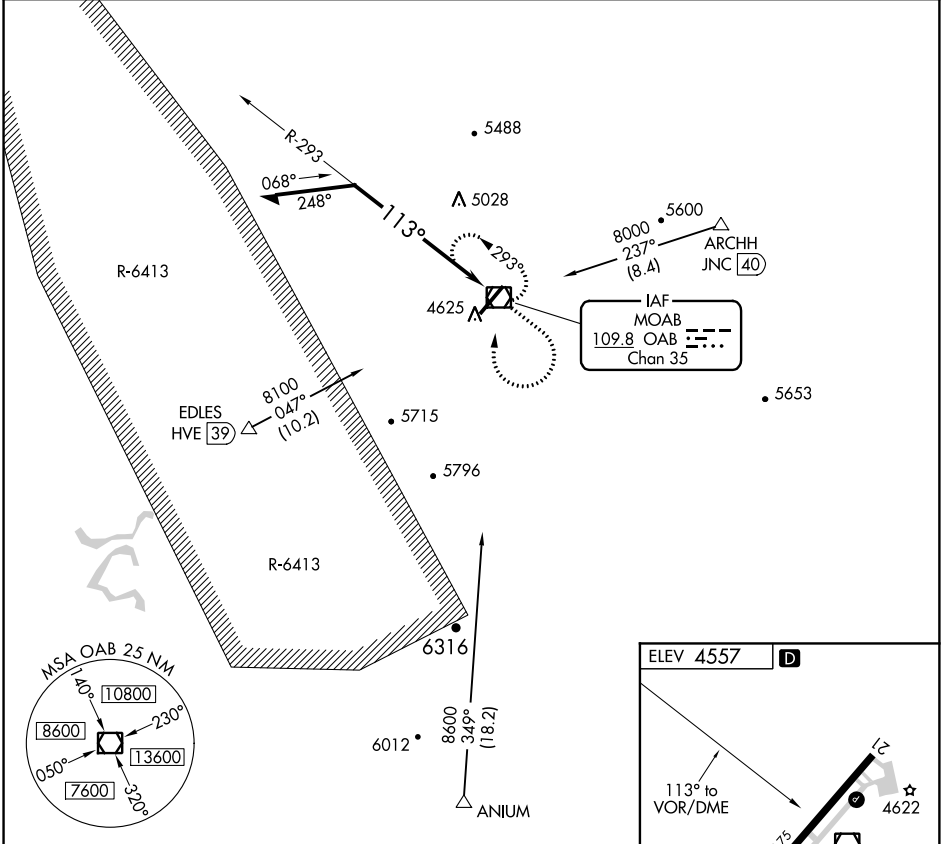
VOR/DME OAB 109.8 Chan 35	APP CRS 113°	Rwy Idg TDZE N/A N/A Apt Elev 4557
--	------------------------	--

VOR-A

CANYONLANDS FIELD (CNY)

NA Procedure not authorized when R-6413 in operation. **MISSED APPROACH:** Climb to 6100 then climbing right turn to 8400 direct OAB VOR/DME and hold, continue climb-in-hold to 8400.

ASOS 118.525	DENVER CENTER 134.5 327.8	UNICOM 122.8 (CTAF)
------------------------	-------------------------------------	-------------------------------



CATEGORY	A	B	C	D
CIRCLING	5640-1¼ 1083 (1100-1¼)	5640-1½ 1083 (1100-1½)	5640-3	1083 (1100-3)



SW-4, 01 MAR 2018 to 29 MAR 2018

SW-4, 01 MAR 2018 to 29 MAR 2018