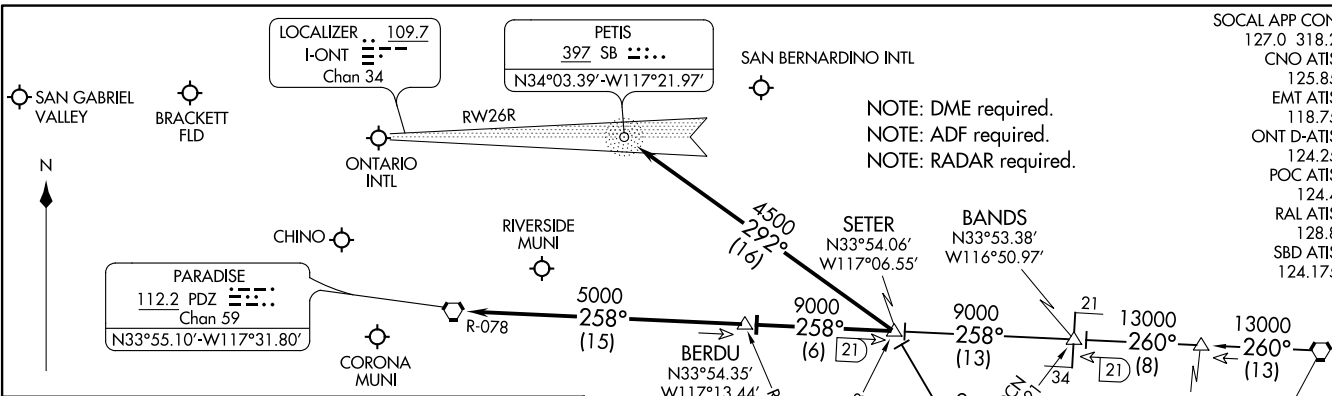


SETER FIVE ARRIVAL  
(SETER:SETER5) 17AUG17

SETER FIVE ARRIVAL  
(SETER:SETER5) 21112



NOTE: DME required.  
NOTE: ADF required.  
NOTE: RADAR required.

- SOCAL APP CON 127.0 318.2
- CNO ATIS 125.85
- EMT ATIS 118.75
- ONT D-ATIS 124.25
- POC ATIS 124.4
- RAL ATIS 128.8
- SBD ATIS 124.175

**ARRIVAL ROUTE DESCRIPTION**

**JULIAN TRANSITION (JLI:SETER5):** From over JLI VORTAC on JLI R-315 to SETER. Thence. . . .

**PALM SPRINGS TRANSITION (PSP:SETER5):** From over PSP VORTAC on PSP R-260 to BANDS, then on PDZ R-078 to SETER. Thence. . . .

**LANDING ONTARIO INTL**

**RUNWAYS 26L/R:** From over SETER on SB NDB 292° course to SB NDB; expect ILS approach.

**RUNWAYS 8L/R:** From over SETER on PDZ R-078 to BERDU, then on PDZ R-078 to PDZ VORTAC; expect vectors to final approach course.

**ALL OTHER AIRPORTS**

From over SETER via PDZ R-078 to BERDU, then on PDZ R-078 to PDZ VORTAC; expect vectors to final approach course.

**VERTICAL NAVIGATION PLANNING INFORMATION**  
Expect 12000

**VERTICAL NAVIGATION PLANNING INFORMATION**  
Expect 16000

**VERTICAL NAVIGATION PLANNING INFORMATION**  
Expect FL240

NOTE: Chart not to scale.

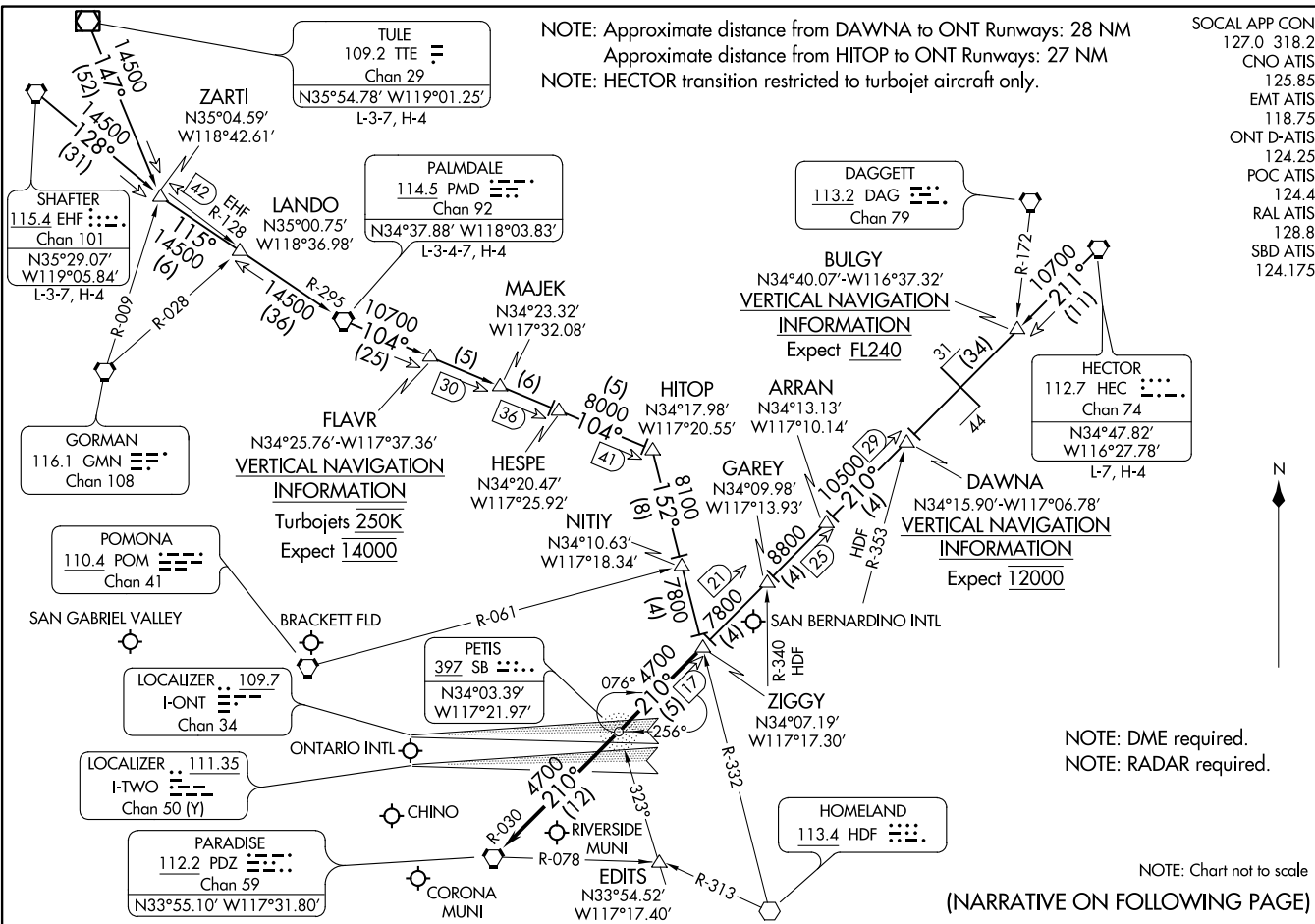
ONTARIO, CALIFORNIA

AL-965 (FAA)

ONTARIO, CALIFORNIA

ZIGGY SEVEN ARRIVAL  
ZIGGY ZIGGY 7 01 FEB 18

ONTARIO, CALIFORNIA



NOTE: Approximate distance from DAWNA to ONT Runways: 28 NM  
Approximate distance from HITOP to ONT Runways: 27 NM  
NOTE: HECTOR transition restricted to turbojet aircraft only.

SOCAL APP CON  
127.0 318.2  
CNO ATIS  
125.85  
EMT ATIS  
118.75  
ONT D-ATIS  
124.25  
POC ATIS  
124.4  
RAL ATIS  
128.8  
SBD ATIS  
124.175

ZIGGY SEVEN ARRIVAL  
ZIGGY ZIGGY 7 21112

AL-965 (FAA)

ONTARIO, CALIFORNIA

NOTE: DME required.  
NOTE: RADAR required.

NOTE: Chart not to scale  
(NARRATIVE ON FOLLOWING PAGE)

ARRIVAL ROUTE DESCRIPTION

HECTOR TRANSITION (HEC.ZIGGY7): From over HEC VORTAC on HEC R-211 and PDZ R-030 to ZIGGY. Thence . . . .

PALMDALE TRANSITION (PMD.ZIGGY7): From over PMD VORTAC on PMD R-104 to HITOP, then on HDF R-332 to ZIGGY. Thence . . . .

SHAFTER TRANSITION (EHF.ZIGGY7): From over EHF VORTAC on EHF R-128 and PMD R-295 to PMD VORTAC, then on PMD R-104 to HITOP, then on HDF R-332 to ZIGGY. Thence . . . .

TULE TRANSITION (TTE.ZIGGY7): From over TTE VOR/DME on TTE R-147 and PMD R-295 to PMD VORTAC, then on PMD R-104 to HITOP, then on HDF R-332 to ZIGGY. Thence . . . .

LANDING ONTARIO INTL

RUNWAYS 8L/R: From over ZIGGY on PDZ R-030 to PDZ VORTAC; expect RADAR vectors to final approach course.

RUNWAYS 26 L/R: From over ZIGGY direct PETIS NDB or on PDZ R-030 to PETIS; expect RADAR vectors for ILS approach.

ALL OTHER AIRPORTS

From over ZIGGY on PDZ R-030 to PDZ VORTAC; expect RADAR vectors to final approach course.

SW-3, 07 OCT 2021 to 04 NOV 2021

SW-3, 07 OCT 2021 to 04 NOV 2021