

# NCLUS TWO DEPARTURE

**TOP ALTITUDE:  
5000**

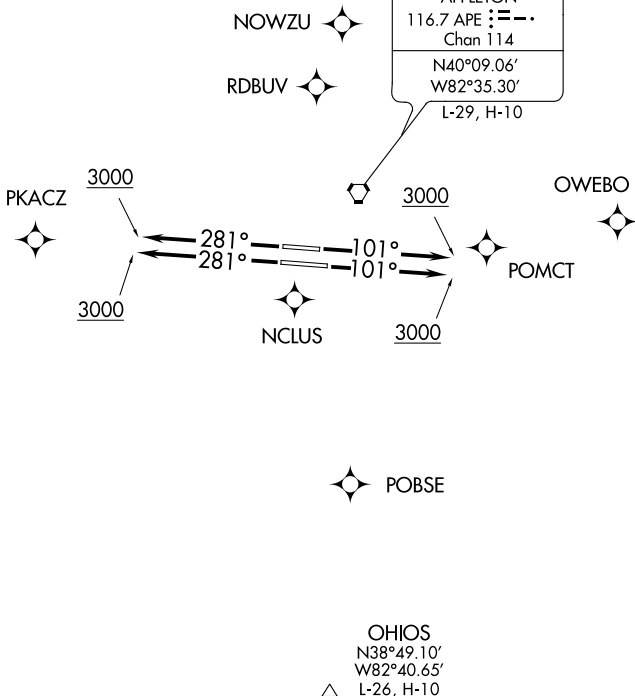
D-ATIS  
124.6  
CLNC DEL 126.3  
CPDLC  
GND CON  
121.9 348.6  
COLUMBUS DEP CON  
125.95 371.975 (DEPARTURES OVER RDBUV & POMCT)  
134.0 279.6 (DEPARTURES OVER PKACZ & POBSE)  
COLUMBUS TOWER  
132.7 257.8

ROSEWOOD  
117.5 ROD   
Chan 122  
N40°17.27'  
W84°02.59'  
L-27, H-10

APPLETON  
116.7 APE   
Chan 114  
N40°09.06'  
W82°35.30'  
L-29, H-10

TARRY  
N40°03.26'  
W83°54.85'  
L-27, H-10

DAYTON  
114.5 DGN   
Chan 92  
N40°00.99'-W84°23.81'  
L-27, H-10



EC-2, 02 DEC 2021 to 30 DEC 2021

EC-2, 02 DEC 2021 to 30 DEC 2021

NOTE: RADAR required.

**TAKEOFF MINIMUMS:**

Rwy 10L/R, 28L/R: Standard with a minimum climb of 220' per NM to 3000.

NOTE: Chart not to scale.

## DEPARTURE ROUTE DESCRIPTION

TAKEOFF RUNWAYS 10L/R: Climb on heading 101° to 3000 thence....

TAKEOFF RUNWAYS 28L/R: Climb on heading 281° to 3000 thence....

....maintain 5000 or assigned lower altitude. Expect RADAR vectors to first enroute fix.  
Expect clearance to requested altitude/flight level 10 minutes after departure.