

AIRPORT DIAGRAM

AL-78 (FAA)

CHARLOTTE/DOUGLAS INTL (CLT)
CHARLOTTE, NORTH CAROLINA

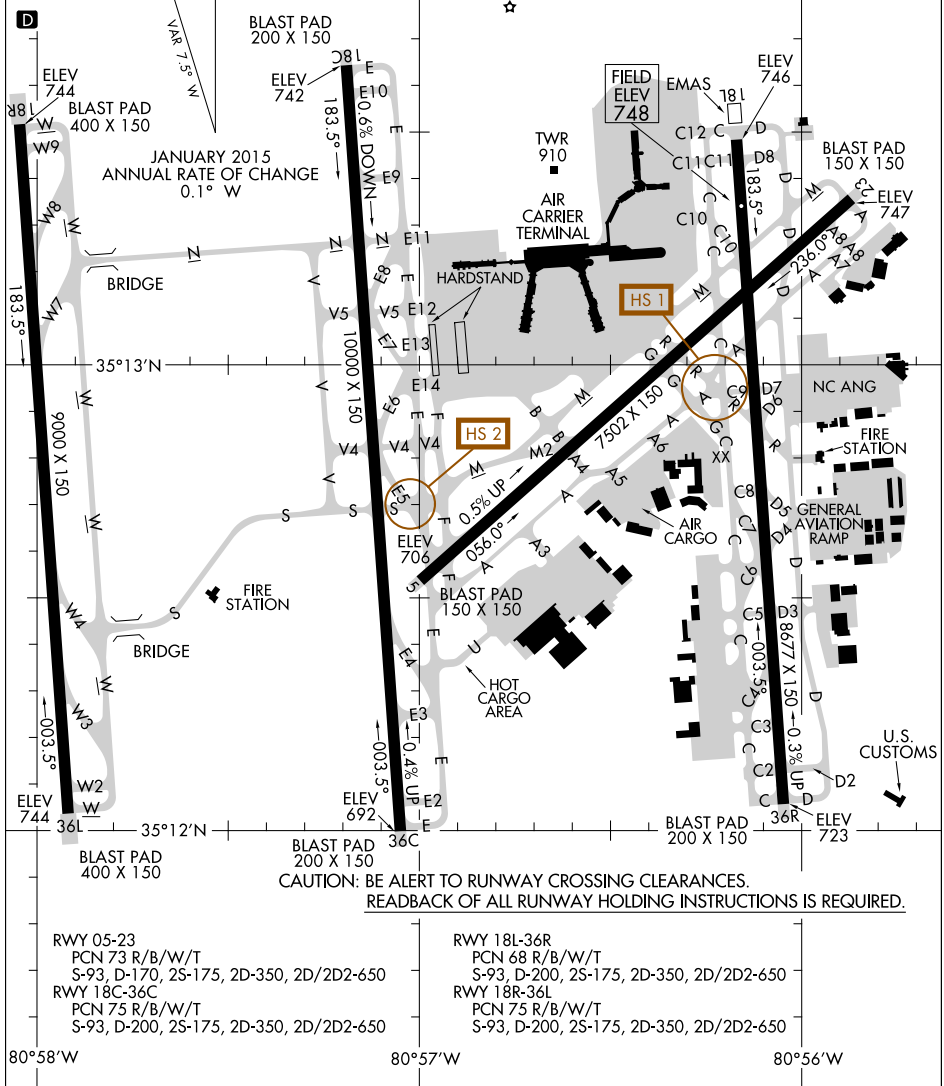
D-ATIS ARR 121.15
DEP 132.1
CHARLOTTE TOWER
118.1 257.8 (RWYS 18L-36R, 05-23)
126.4 257.8 (RWY 18C-36C)
133.35 257.8 (RWY 18R-36L)
GND CON
121.8 348.6 (180°-359°)
121.9 348.6 (360°-179°)
CLNC DEL
127.15 348.6
CPDLC

ASDE-X in use. Operate transponders with altitude reporting mode and ADS-B (if equipped) enabled on all airport surfaces.

Runway Status Lights in operation.

SE-2, 24 MAY 2018 to 21 JUN 2018

SE-2, 24 MAY 2018 to 21 JUN 2018



AIRPORT DIAGRAM

CHARLOTTE, NORTH CAROLINA
CHARLOTTE/DOUGLAS INTL (CLT)

17173