

APP CRS	Rwy Idg	4001
178°	TDZE	1214
	Apt Elev	1226

RNAV (GPS) RWY 18

CHEROKEE COUNTY RGNL (CKP)

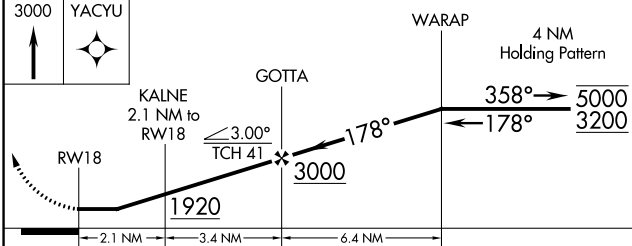
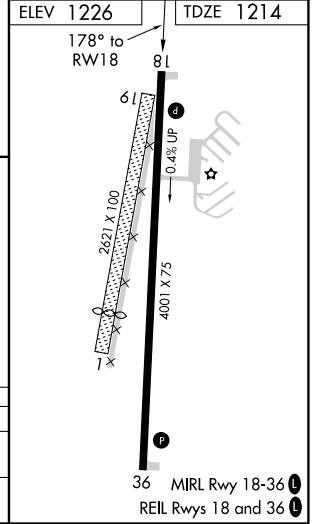
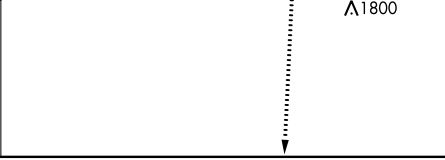
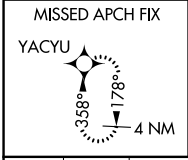
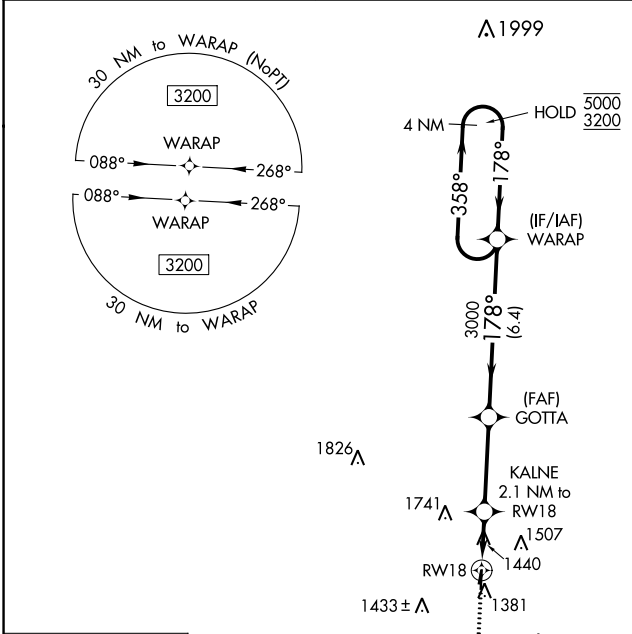
RNP APCH.

▼ Circling NA to Rwys 1 and 19. Rwy 18 helicopter visibility reduction below 1 SM NA. Rwy 18 Straight-in and Circling NA at night.

▲

MISSED APPROACH: Climb to 3000 direct YACYU and hold.

AWOS-3 119.225	MINNEAPOLIS CENTER 125.025 235.625	UNICOM 122.8 (CTAF) 0
--------------------------	--	---------------------------------



CATEGORY	A	B	C	D
LNVA MDA	1740-1	526 (600-1)	1740-1½	526 (600-1½)
C CIRCLING	1760-1 534 (600-1)	1820-1 594 (600-1)	2100-2½ 874 (900-2½)	2160-3 934 (1000-3)

NC-3, 20 MAY 2021 to 17 JUN 2021

NC-3, 20 MAY 2021 to 17 JUN 2021

WAAS CH 73042 W36A	APP CRS 358°	Rwy Idg TDZE Apt Elev	4001 1226 1226
--	------------------------	-----------------------------	---

RNAV (GPS) RWY 36

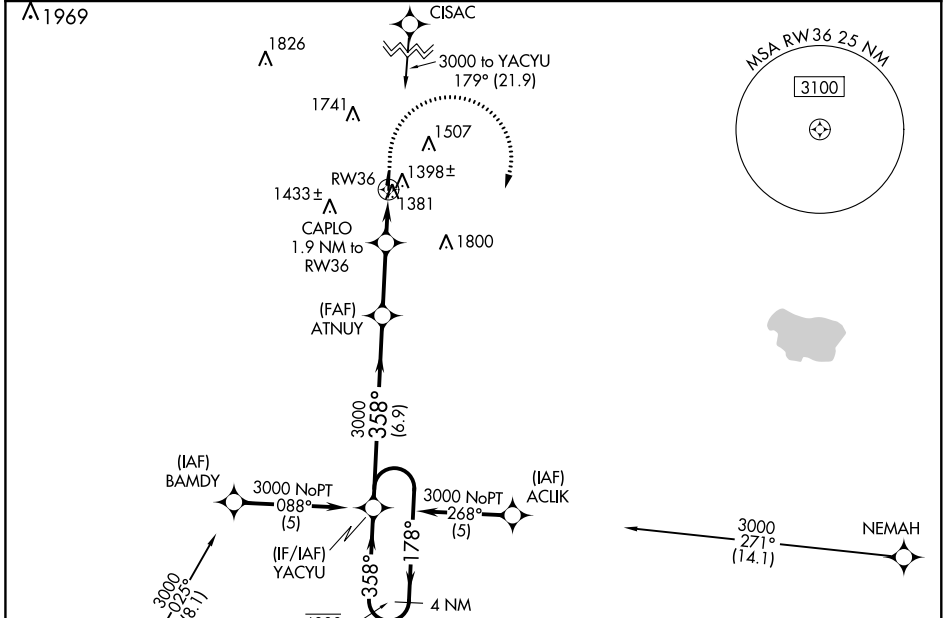
CHEROKEE COUNTY RGNL (CKP)

RNP APCH.

▼ Rwy 36 helicopter visibility reduction below 3/4 SM NA. Circling to Rwy 1-19 NA. Circling Rwy 18 NA at night.

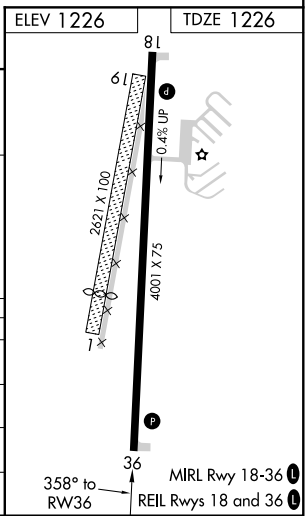
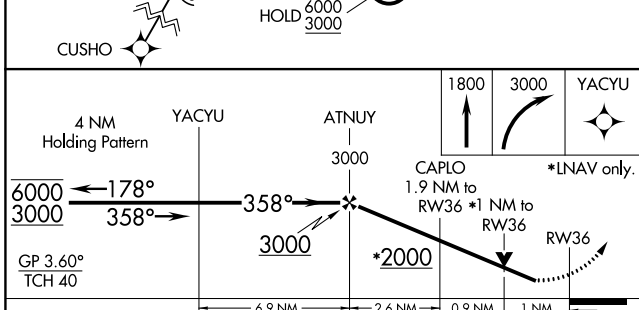
MISSED APPROACH: Climb to 1800 then climbing right turn to 3000 direct YACYU and hold.

AWOS-3 119.225	MINNEAPOLIS CENTER 125.025 235.625	UNICOM 122.8 (CTAF) 0
--------------------------	--	---------------------------------



NC-3, 20 MAY 2021 to 17 JUN 2021

NC-3, 20 MAY 2021 to 17 JUN 2021



CATEGORY	A	B	C	D
LPV DA	1492-1	266 (300-1)		NA
LNAV/VNAV DA	1540-1	314 (400-1)		NA
LNAV MDA	1660-1	434 (500-1)		NA
C CIRCLING	1760-1 534 (600-1)	1820-1 594 (600-1)		NA