


LOC/DME I-CGF 111.1 Chan 48	APP CRS 237°	Rwy Idg TDZE Apt Elev	5102 879 879
--	------------------------	-----------------------------	---

ILS or LOC RWY 24

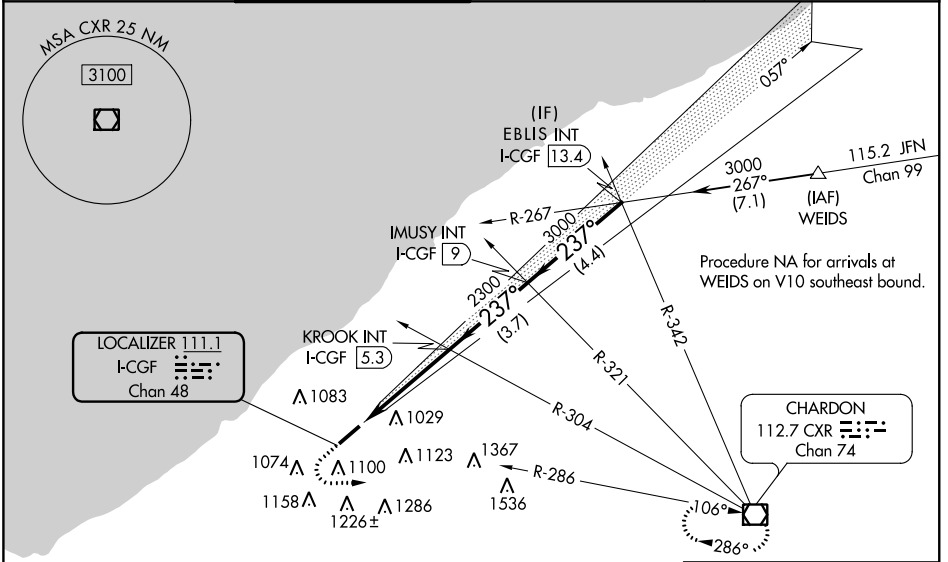
CUYAHOGA COUNTY (CGF)

⚠ Autopilot coupled approach NA below 2020. Visibility reduction by helicopters NA. VDP NA with Cleveland-Hopkins Int altimeter setting. When local altimeter setting not received, use Cleveland-Hopkins Int altimeter setting and increase all DA 57 feet and all MDA 60 feet, increase Circling Cat C ¼ mile. For inoperative MALSRS increase S-LOC visibility all Cats to 1 mile. For inoperative MALSRS when using Cleveland-Hopkins Int altimeter setting, increase S-ILS visibility all Cats to 1¼ mile, increase S-LOC Cat A, B visibility to 1 mile.

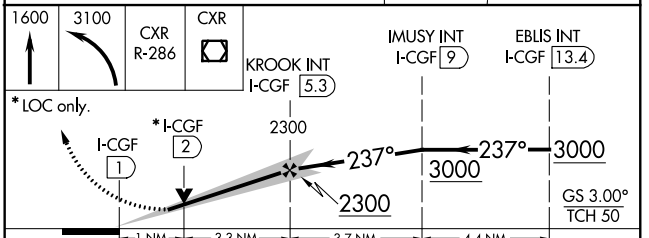
MALSRS 

MISSED APPROACH:
Climb to 1600 then climbing left turn to 3100 via CXR VOR/DME R-286 to CXR VOR/DME and hold.

CLEVELAND APP CON 125.35 354.025	COUNTY TOWER* 118.5 (CTAF) 	GND CON 121.85	CLNC DEL 121.85
--	--	--------------------------	---------------------------



ELEV 879	D	TDZE 879
----------	----------	----------



CATEGORY	A	B	C	D
S-ILS 24		1192-¾	313 (400-¾)	
S-LOC 24		1240-¾	361 (400-¾)	
CIRCLING	1400-1 521 (600-1)	1420-1 541 (600-1)	1420-1½ 541 (600-1½)	1480-2 601 (700-2)

EC-2, 29 MAR 2018 to 26 APR 2018

EC-2, 29 MAR 2018 to 26 APR 2018

WAAS CH 70628 W06A	APP CRS 057°	Rwy Idg TDZE Apt Elev	5102 873 879
--	------------------------	-----------------------------	---

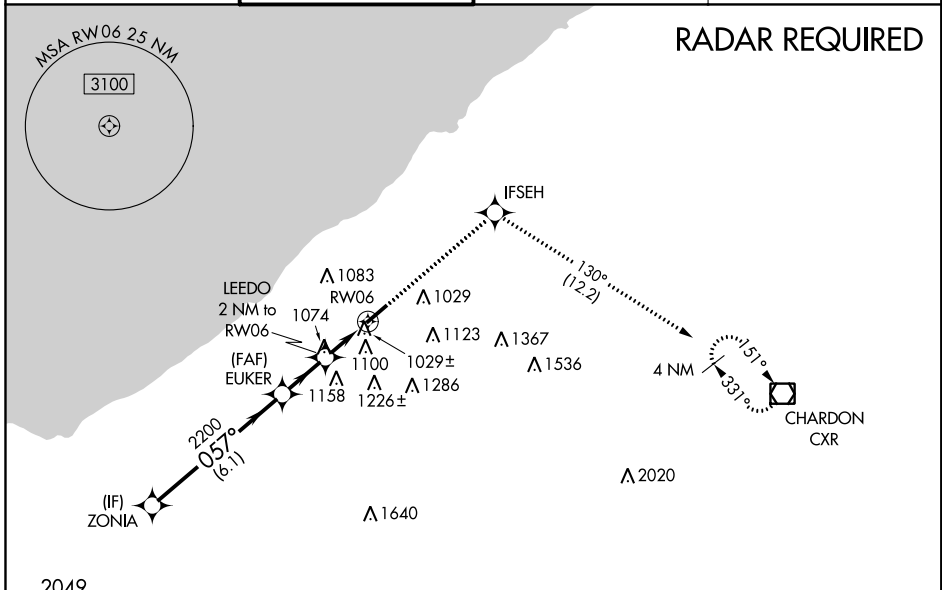
RNAV (GPS) RWY 6

CUYAHOGA COUNTY (CGF)

⚠ Baro-VNAV NA when using Cleveland-Hopkins Intl altimeter setting. For uncompensated Baro-VNAV systems, LNAV/VNAV NA below -16°C (4°F) or above 38°C (100°F). When VGSI inop, Straight-In/ Circling Rwy 06 procedure NA at night. DME/DME RNP-0.3 NA. Visibility reduction by helicopters NA. When local altimeter setting not received, use Cleveland-Hopkins Intl altimeter setting and increase all DA 57 feet and all MDA 60 feet, increase LPV visibility all Cats ¼ mile, LNAV/VNAV visibility all Cats ½ mile, LNAV Cat C, D visibility ¼ mile and Circling Cat C ¼ mile.

MISSED APPROACH:
Climb to 3100 direct
IFSEH and on track
130° to CXR
VOR/DME and hold.

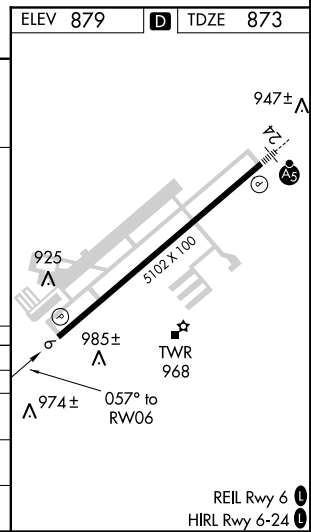
CLEVELAND APP CON 125.35 354.025	COUNTY TOWER* 118.5 (CTAF) 0	GND CON 121.85	CLNC DEL 121.85
--	---	--------------------------	---------------------------



RADAR REQUIRED

EC-2: 29 MAR 2018 to 26 APR 2018

EC-2: 29 MAR 2018 to 26 APR 2018



	ZONIA	EUKER	LEEDO 2 NM to RW06	RW06
	2200	2200	*1540	
	GP 3.00° TCH 42			
	6.1 NM	2 NM	2 NM	
CATEGORY	A	B	C	D
LPV DA		1177-1	304 (300-1)	
LNAV/VNAV DA		1234-1¼	361 (400-1¼)	
LNAV MDA	1380-1	507 (600-1)	1380-1¾	507 (600-1¾)
CIRCLING	1400-1 521 (600-1)	1420-1 541 (600-1)	1420-1½ 541 (600-1½)	1480-2 601 (700-2)

REIL Rwy 6 **0**
HIRL Rwy 6-24 **0**