

ALPHE FOUR DEPARTURE (RNAV)
(ALPHE4,ALPHE) 15176

(ALPHE4,ALPHE) 15176
ALPHE FOUR DEPARTURE (RNAV)
SI-5027 (FAA)

CLEVELAND DEP CON
125.35 346.32

TOP ALTITUDE:
3000

DEPARTURE ROUTE DESCRIPTION

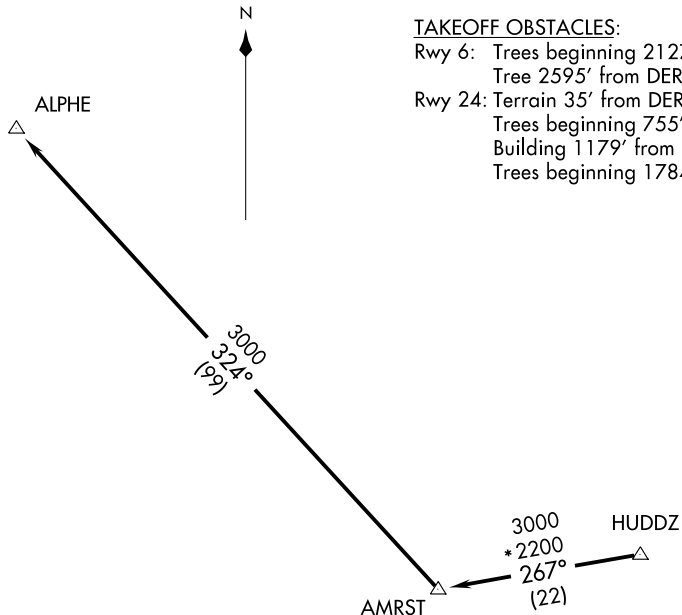
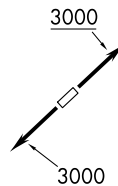
TAKEOFF RUNWAYS 6, 24: Climb via assigned heading to 3000 thence....

...or assigned altitude for radar vectors to HUDDZ, then on track 267° to AMRST, then on track 324° to ALPHE. Expect filed altitude/flight level ten (10) minutes after departure.

TAKEOFF OBSTACLES:

- Rwy 6: Trees beginning 2127' from DER, 33' right of centerline, up to 109' AGL/982' MSL.
Tree 2595' from DER, 739' left of centerline, 93' AGL/947' MSL.
- Rwy 24: Terrain 35' from DER, 447' left of centerline, 874' MSL.
Trees beginning 755' from DER, 46' right of centerline, up to 82' AGL/975' MSL.
Building 1179' from DER, 676' left of centerline, 34' AGL/917' MSL.
Trees beginning 1784' from DER, 35' left of centerline, up to 92' AGL/985' MSL.

TAKEOFF MINIMUMS:
Rwys 6, 24: Standard.



MANSFIELD
MFD

- NOTE: Radar required for non-GPS equipped aircraft.
- NOTE: RNAV 1.
- NOTE: DME/DME/IRU or GPS required.

NOTE: Chart not to scale.

CLEVELAND, OHIO
CUYAHOGA COUNTY (CGF)
(ALPHE4,ALPHE) 15176

CUYAHOGA COUNTY (CGF)
CLEVELAND, OHIO
(ALPHE4,ALPHE) 15176

AMRST FIVE DEPARTURE
(AMRST5.AMRST) 15120

CLEVELAND, OHIO
CUYAHOGA COUNTY (CGF)

CLEVELAND DEP CON
125.35 346.32
ATIS 132.375

**TOP ALTITUDE:
3000**

CARLETON
115.7 CRL
Chan 104
N42°02.88'-W83°27.45'

L-28, H-10

WATERVILLE
113.1 VWV
Chan 78
N41°27.09'
W83°38.32'

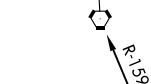
L-28, H-10

DRYER
113.6 DJB
Chan 83
N41°21.48'
W82°09.72'

HUDDZ
N41°18.68'
W82°30.59'

MANSFIELD
108.8 MFD
Chan 25

AMRST
N41°14.70'
W82°59.33'



R-159

7000
339°
(53)



R-115

3000
*2200
295°
(32)

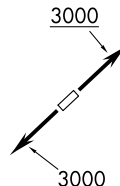
38

265°
(22)

265°
(16)

265°
(22)

R-011



NOTE: Radar required.
NOTE: Chart not to scale.

DEPARTURE ROUTE DESCRIPTION

TAKEOFF RUNWAYS 6, 24: Climb on assigned heading to 3000 thence....

....or assigned altitude for vectors to intercept DJB VOR/DME R-265, to AMRST INT then on (transition).
Expect filed altitude/flight level ten (10) minutes after departure.

CARLETON TRANSITION (AMRST5.CRL): From over AMRST INT on CRL R-159 to CRL VORTAC.

WATERVILLE TRANSITION (AMRST5.VWV): From over AMRST INT on VWV R-115 to VWV VOR/DME.

TAKEOFF OBSTACLES:

- Rwy 6: Trees beginning 2127' from DER, 33' right of centerline, up to 109' AGL/982' MSL.
Tree 2595' from DER, 739' left of centerline, 93' AGL/947' MSL.
- Rwy 24: Terrain 35' from DER, 447' left of centerline, 874' MSL.
Trees beginning 755' from DER, 46' right of centerline, up to 82' AGL/975' MSL.
Building 1179' from DER, 676' left of centerline, 34' AGL/917' MSL.
Trees beginning 1784' from DER, 35' left of centerline, up to 92' AGL/985' MSL.

TAKEOFF MINIMUMS:

Rwys 6, 24: Standard.

(AMRST5.AMRST) 15120
AMRST FIVE DEPARTURE

SI-5027 (FAA)

CUYAHOGA COUNTY (CGF)
CLEVELAND, OHIO

OBRLN FIVE DEPARTURE
(OBRLN5.OBRLN) 17117

CLEVELAND DEP CON
125.35 346.32

- NOTE: FORT WAYNE transition for use by FORT WAYNE arrivals only and ATC use as assigned.
- NOTE: MUNCIE transition for use by Indianapolis arrivals only and ATC use as assigned.
- NOTE: ROSEWOOD transition for use at or below FL220 only and ATC use as assigned.
- NOTE: Radar required

TOP ALTITUDE:
3000



TAKEOFF MINIMUMS:
Rwys 6, 24: Standard.

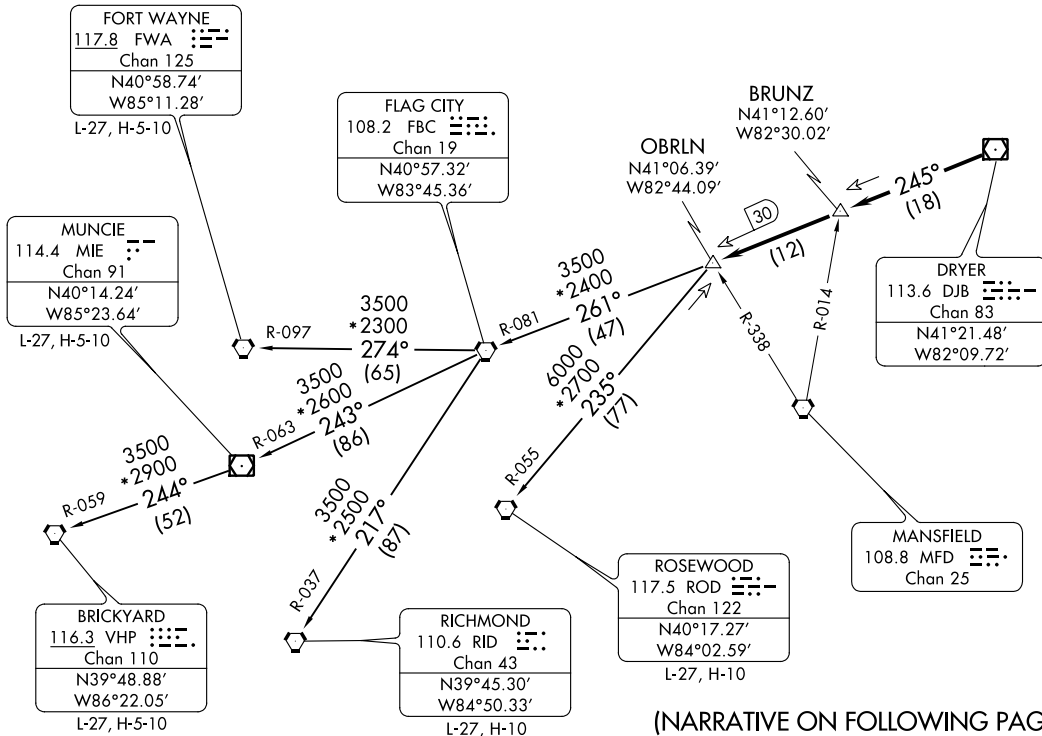


(OBRLN5.OBRLN) 17117
OBRLN FIVE DEPARTURE

AL-5027 (FAA)

CUYAHOGA COUNTY (CGF)
CLEVELAND, OHIO

CLEVELAND, OHIO
CUYAHOGA COUNTY (CGF)



(NARRATIVE ON FOLLOWING PAGE)

NOTE: Chart not to scale.

OBRLN FIVE DEPARTURE



DEPARTURE ROUTE DESCRIPTION

TAKEOFF RUNWAYS 6, 24: Climb on assigned heading to 3000, thence....

....for vectors to intercept DJB VOR/DME R-245 to BRUNZ INT, then on DJB VOR/DME R-245 to OBRLN INT, then on (transition).

Expect filed altitude/flight level ten (10) minutes after departure.

BRICKYARD TRANSITION (OBRLN5.VHP): From over OBRLN INT via FBC R-081 to FBC VORTAC, then via FBC R-243 and MIE R-063 to MIE VOR/DME, then via MIE R-244 and VHP R-059 to VHP VORTAC.

FORT WAYNE TRANSITION (OBRLN5.FWA): From over OBRLN INT via FBC R-081 to FBC VORTAC, then via FBC R-274 and FWA R-097 to FWA VORTAC.

MUNCIE TRANSITION (OBRLN5.MIE): From over OBRLN INT via FBC R-081 to FBC VORTAC, then via FBC R-243 and MIE R-063 to MIE VOR/DME.

RICHMOND TRANSITION (OBRLN5.RID): From over OBRLN INT via FBC R-081 to FBC VORTAC, then via FBC R-217 and RID R-037 to RID VORTAC.

ROSEWOOD TRANSITION (OBRLN5.ROD): From over OBRLN INT via ROD R-055 to ROD VORTAC.

TAKEOFF OBSTACLES:

Rwy 6: Trees beginning 2127' from DER, 33' right of centerline, up to 109' AGL/982' MSL.
Tree 2595' from DER, 739' left of centerline, 93' AGL/947' MSL.

Rwy 24: Terrain 35' from DER, 447' left of centerline, 874' MSL.
Trees beginning 755' from DER, 46' right of centerline, up to 82' AGL/975' MSL.
Building 1179' from DER, 676' left of centerline, 34' AGL/917' MSL.
Trees beginning 1784' from DER, 35' left of centerline, up to 92' AGL/985' MSL.

EC-2, 21 JUN 2018 to 19 JUL 2018

EC-2, 21 JUN 2018 to 19 JUL 2018