

WAAS CH <b>50405</b> <b>W25A</b>	APP CRS <b>253°</b>	Rwy Idg TDZE Apt Elev	<b>5000</b> <b>891</b> <b>891</b>
--	------------------------	-----------------------------	---

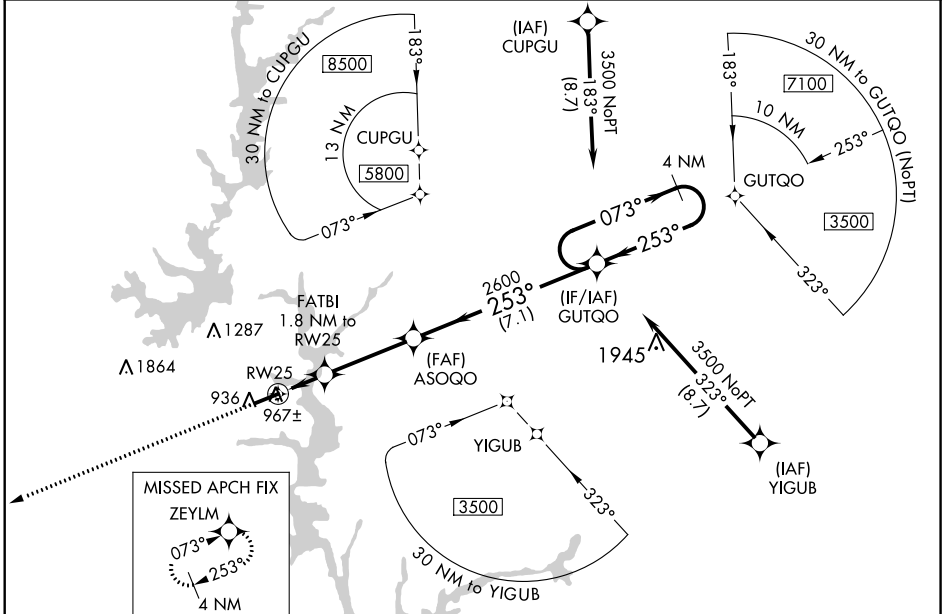
# RNAV (GPS) RWY 25

OCONEE COUNTY RGNL (CEU)

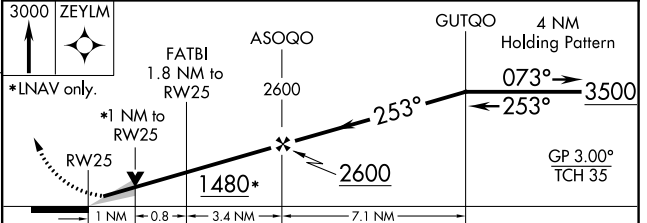
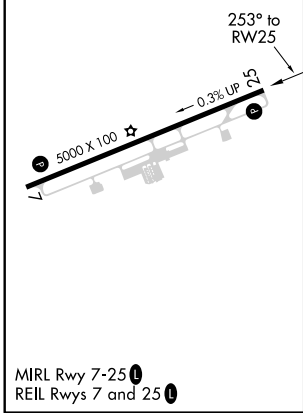
**⚠** For uncompensated Baro-VNAV systems, LNAV/VNAV NA below -6°C (22°F) or above 54°C (130°F). DME/DME RNP-0.3 NA. When local altimeter setting not received, use Anderson altimeter setting and increase all DA 47 feet and all MDA 60 feet; increase LPV all Cats, and LNAV Cat C visibility 1/8 mile; increase LNAV/VNAV all Cats visibility 1/4 mile. Baro-VNAV and VDP NA when using Anderson altimeter setting.

**⚠** MISSED APPROACH: Climb to 3000 direct ZEYLM and hold.

ASOS <b>119.275</b>	GREER APP CON * <b>118.8 270.275</b>	UNICOM <b>122.7 (CTAF) 0</b>
------------------------	---	---------------------------------



ELEV 891	TDZE 891
----------	----------



	A	B	C	D
LPV DA	1091-3/4	200 (200-3/4)		NA
LNAV/VNAV DA	1141-7/8	250 (300-7/8)		NA
LNAV MDA	1220-1	329 (400-1)		NA
<b>C</b> CIRCLING	1300-1 409 (500-1)	1360-1 469 (500-1)	1640-2 1/4 749 (800-2 1/4)	NA

SE-2, 25 FEB 2021 to 25 MAR 2021

SE-2, 25 FEB 2021 to 25 MAR 2021

WAAS CH <b>97605</b> <b>W07A</b>	APP CRS <b>073°</b>	Rwy Idg TDZE <b>891</b> Apt Elev <b>891</b>	<b>5000</b>
--	------------------------	---	-------------

# RNAV (GPS) RWY 7

OCONEE COUNTY RGNL (CEU)

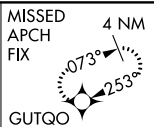
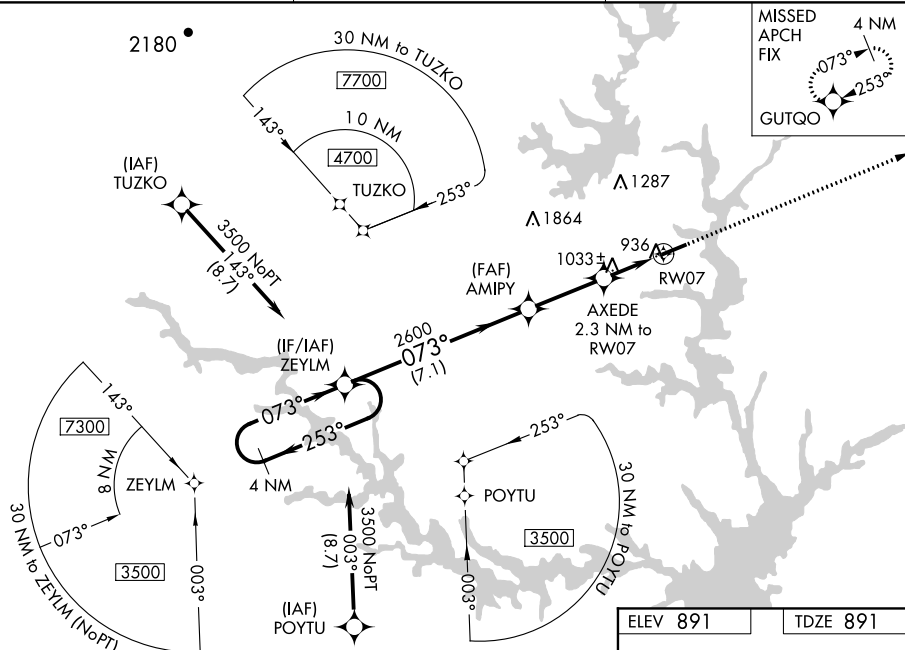
**⚠** Baro-VNAV NA when using Anderson altimeter setting. For uncompensated Baro-VNAV systems, LNAV/VNAV NA below -6°C (22°F) or above 54°C (130°F). DME/DME RNP-0.3 NA.  
**⚠** When local altimeter setting not received, use Anderson altimeter setting and increase all DA 47 feet and all MDA 60 feet; increase LPV and LNAV/VNAV Cats A and B, and LNAV Cat C visibility ¼ mile. Helicopter visibility reduction below ¼ SM NA.

**MISSED APPROACH:**  
Climb to 3000 direct GUTQO and hold.

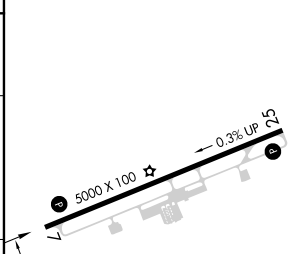
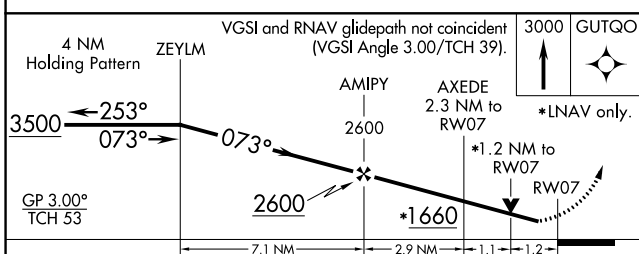
ASOS  
**119.275**

GREER APP CON ★  
**118.8 270.275**

UNICOM  
**122.7 [CTAF] 0**



ELEV 891	TDZE 891
----------	----------



CATEGORY	A	B	C	D
LPV DA	1146-¾	255 (300-¾)	1146-1 255 (300-1)	NA
LNAV/VNAV DA	1144-¾	253 (300-¾)	1144-1 253 (300-1)	NA
LNAV MDA	1300-1	409 (500-1)	1300-1½ 409 (500-1½)	NA
<b>C</b> CIRCLING	1300-1 409 (500-1)	1360-1 469 (500-1)	1640-2¼ 749 (800-2¼)	NA

073° to RW07

MIRL Rwy 7-25 **0**  
REIL Rwy 7 and 25 **0**

SE-2, 25 FEB 2021 to 25 MAR 2021

SE-2, 25 FEB 2021 to 25 MAR 2021