

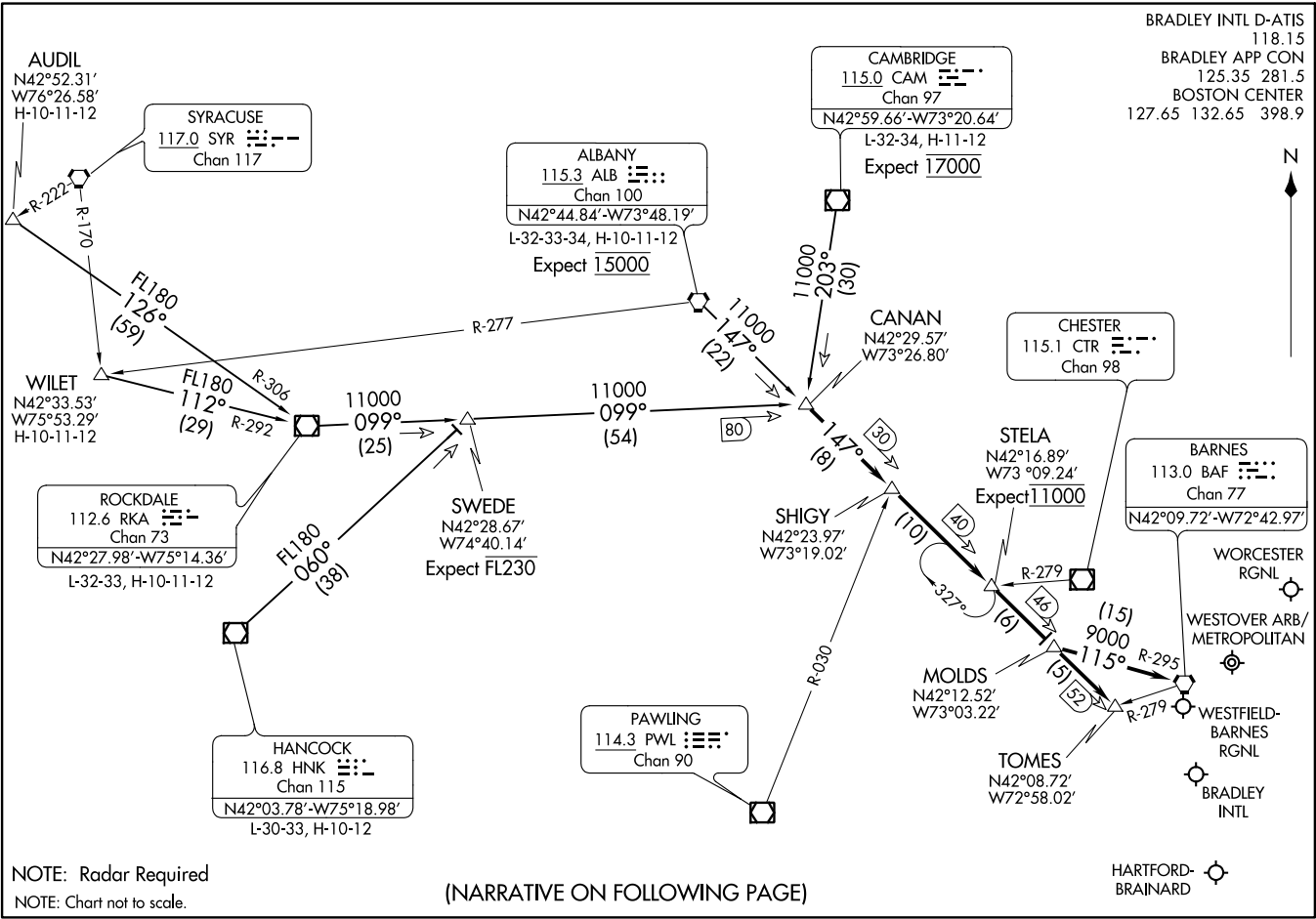
STELA ONE ARRIVAL
(STELA,STEA1) 31MAY12

(STELA,STEA1) 17117
STELA ONE ARRIVAL

AL-460 (FAA)

WINDSOR LOCKS, CONNECTICUT

BRADLEY INTL D-ATIS 118.15
BRADLEY APP CON 125.35 281.5
BOSTON CENTER 127.65 132.65 398.9



STELA ONE ARRIVAL

ARRIVAL ROUTE DESCRIPTION

ALBANY TRANSITION (ALB.STELA1): From over ALB VORTAC via ALB R-147 to CANAN INT. Thence. . . .

AUDIL TRANSITION (AUDIL.STELA1): From over AUDIL INT via RKA R-306 to RKA VOR/DME, then via RKA R-099 to CANAN INT. Thence. . . .

CAMBRIDGE TRANSITION (CAM.STELA1): From over CAM VOR/DME via CAM R-203 to CANAN INT. Thence. . . .

HANCOCK TRANSITION (HNK.STELA1): From over HNK VOR/DME via HNK R-060 to SWEDE INT, then via RKA R-099 to CANAN INT. Thence. . . .

WILET TRANSITION (WILET.STELA1): From over WILET INT via RKA R-292 to RKA VOR/DME, then via RKA R-099 TO CANAN INT. Thence. . . .

KBDL and KHFD ARRIVALS: From over CANAN INT via ALB R-147 to TOMES INT. Expect radar vectors to final approach course prior to TOMES INT.

KBAF, KCEF and KORH ARRIVALS: From over CANAN INT via ALB R-147 to MOLDS INT. Then via BAF R-295 to BAF VORTAC. Expect radar vectors to final approach course prior to BAF VORTAC.

NE-1, 29 MAR 2018 to 26 APR 2018

NE-1, 29 MAR 2018 to 26 APR 2018