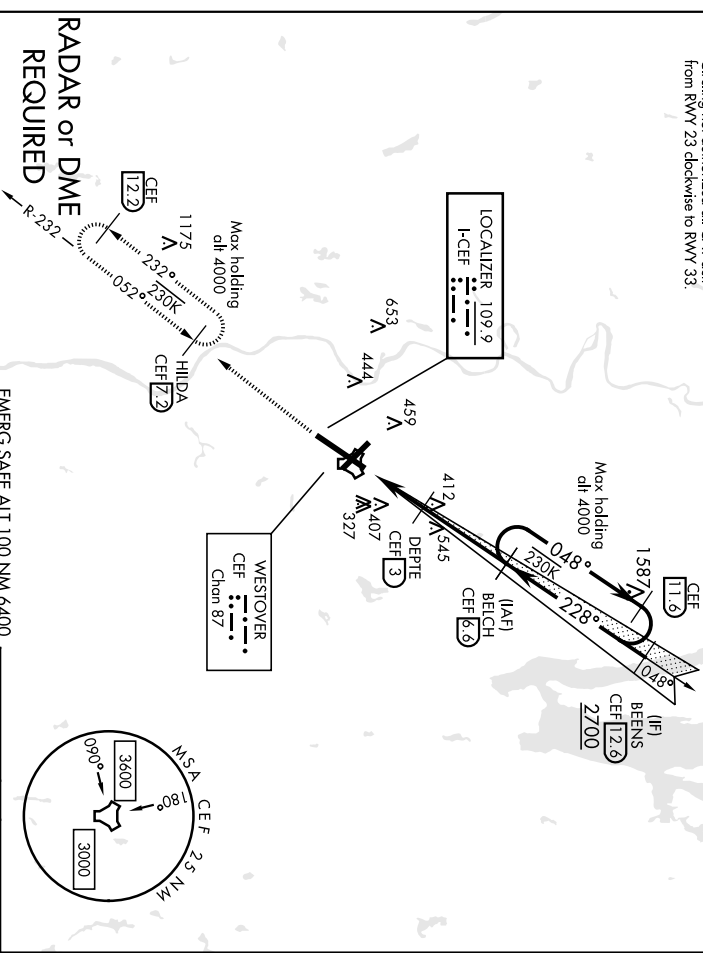


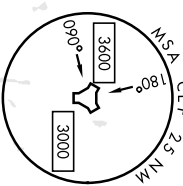
LOC I-CEF 109.9	APCH CRS 228°	Rwy Idg 11,598	AL-447 [USAF]	WESTOVER ARB METROPOLITAN (KCEF)
	TDZE 241	Arpt Elev 241		
*** When ALS inop, increase RVR to 40 and vis to 3/8 mile. ** When ALS inop, increase CAT AB RVR to 55 and vis to 1 mile. CAT CDE vis to 1 3/8 miles.			ALSF-1 	MISSED APPROACH: Climb to 2500 via CEF R-232 to HILDA and hold. Expect radar vectors
ATIS * 127.525		BRADLEY APP CON 125.35 281.5	WESTOVER TOWER * 134.85 (CTAF) 348.75	GND CON 118.35 275.8

*** Clinging not authorized all CAT arpt from RWY 23 clockwise to RWY 33.

NE-1, 04 JAN 2018 to 01 FEB 2018

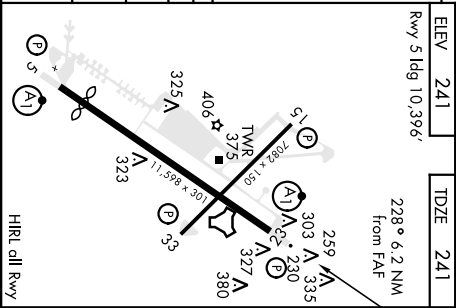


NE-1, 04 JAN 2018 to 01 FEB 2018



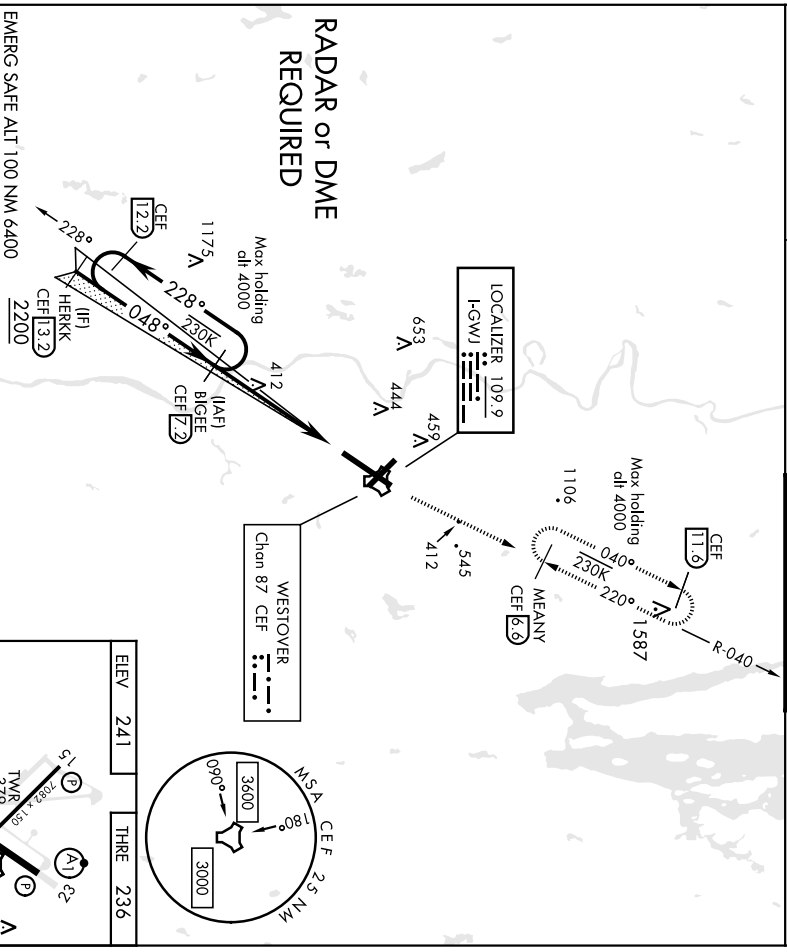
NE-1, 04 JAN 2018 to 01 FEB 2018

2500 CEF R-232	HILDA CEF [Z]	BECH 6.6	ELEV 241	TDZE 241
+LOC ONLY		048°	Rwy 5 Idg 10,396'	228° 6.2 NM from FAF
TACAN		2700		
ZODER 18	3	2300		
1020		2300		
CATEGORY		GS 3.00°		
S-ILS 23 *		TCH 46		
A		21 NM		
B		34 NM		
C		200		
D				
E				
S-LOC 23 **		441 / 24		
760 / 24 519 (600-1/2)		760 / 55 519 (600-1)		
S-LOC 23 ***				
780-1 539 (600-1)		800-1 559 (600-1)	820-1 1/2 579 (600-1 1/2)	960-2 1/4 719 (800-2 1/4)
CIRCLING			980-2 1/2 739 (800-2 1/2)	

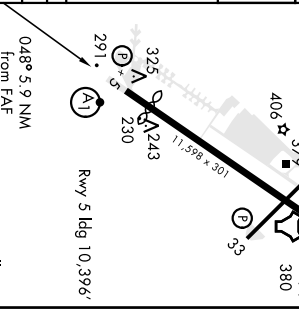
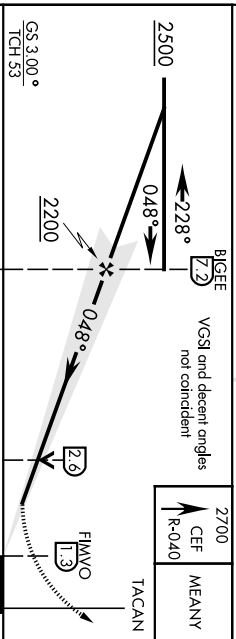


ILS or LOC Rwy 5

LOC I-GWJ	APCH CRS	Rwy Idg	10,396	AL-447 [USAF]	WESTOVER ARB METROPOLITAN (KCEF)
109.9	048°	THR E	236		
		Appt Elev	241	AISF-1	MISSED APPROACH: Climb to 2700 via CEF R-040 to MEANY and hold. Expect radar vectors. Expect climb in hold
<p>▼ * When ALS inop, increase CAT AB RVR to 55 and vis to 1 mile. CAT GDE vis to 1½ miles. ** Circling not authorized all CAT act from Rwy 23 clockwise to Rwy 33.</p>					
ATIS *	BRADLEY APP CON	WESTOVER TOWER *	GND CON		
127.525	125.35 281.5	134.85 (CTAF) 348.75	118.35 275.8		



RADAR or DME REQUIRED



CS 3,000° TCH 53					2700 CEF R-040 MEANY TACAN
CATEGORY	A	B	C	D	E
S-ILS 5	486/40		250		
S-LOC 5 *	700/40	464 (500-¾)	700/50	464 (500-1)	
** CIRCLING	780-1 539 (600-1)	800-1 559 (600-1)	820-1½ 579 (600-1½)	960-2¼ 719 (800-2¼)	980-2½ 739 (800-2½)
SPRINGFIELD/CHICOPPEE, MASSACHUSETTS	42° 11' N 072° 32' W		WESTOVER ARB METROPOLITAN (KCEF)		
Amhd 2 17AUG17	FAF to MAP 5.9 NM		HRLI dill Rwy		
	Knots	60	90	120	150 180
	Min:Sec	5:54	3:56	2:57	2:22 1:58

ILS or LOC Rwy 5

RNAV (GPS) RWY 23

APCH CRS	Rwy Idg	11,598
228°	TDZE	241
	Arprt Elev	241

AL-447 (USAF)

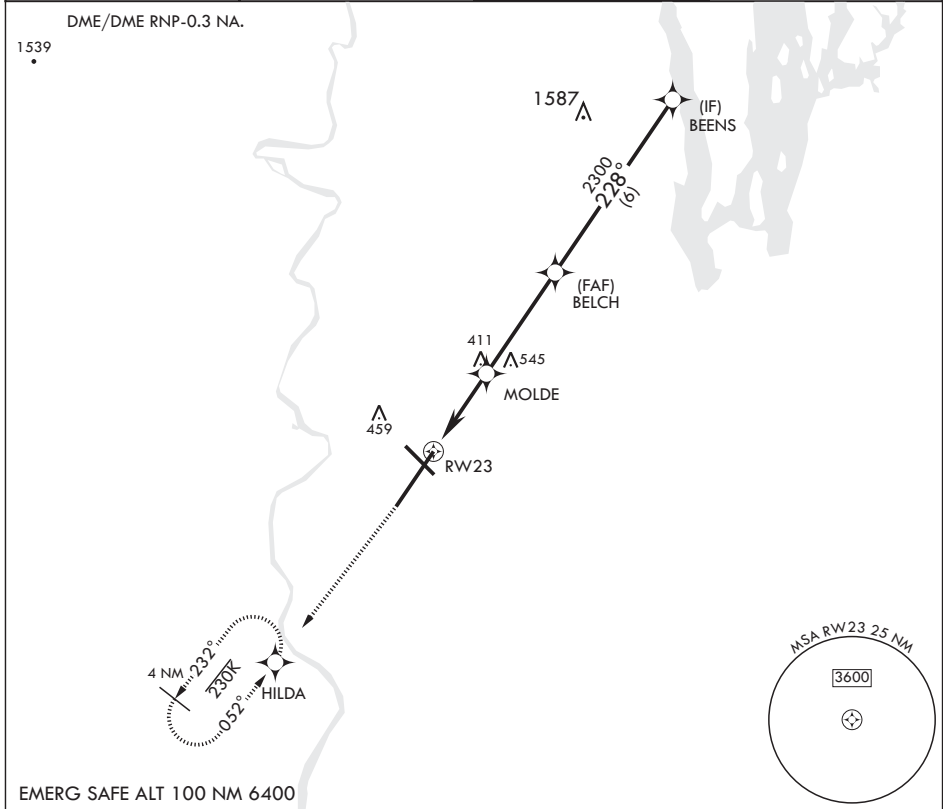
WESTOVER ARB METROPOLITAN (KCEF)

⚠ * When ALS inop increase CAT AB RVR to 55, vis to 1 mile; CAT CD vis to 1 5/8 miles.
 ** Circling not authorized all CAT acft from Rwy 23 clockwise to Rwy 33.



MISSED APPROACH: Climb to 1000 then climbing right turn to 2500 direct HILDA and hold. Expect radar vectors.

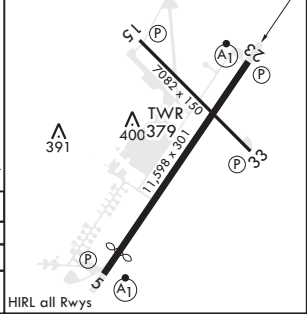
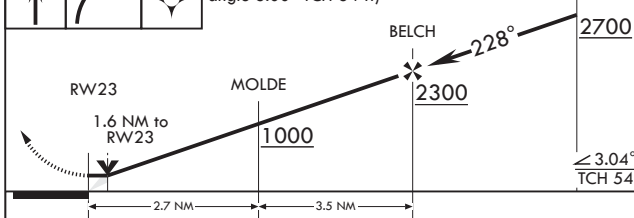
ATIS★ 127.525	BRADLEY APP CON 125.35 281.5	TOWER★ 134.85 (CTAF) 348.75	GND CON 118.35 275.8
------------------	---------------------------------	--------------------------------	-------------------------



1000 \uparrow 2500 \curvearrowright HILDA \star

VGSI and descent angles not coincident (VGSI angle 3.00° TCH 64 ft)

ELEV 241	TDZE 241
Rwy 5 Idg 10,396'	228° to RW23



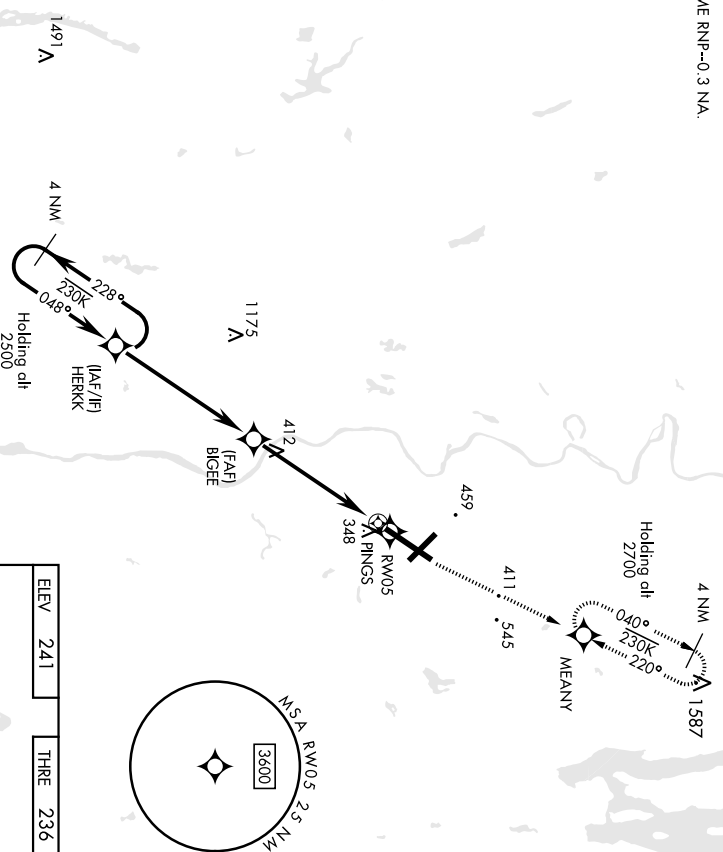
CATEGORY	A	B	C	D
LNVA MDA*	820/24 579 (600-1/2)	820-1 1/4 579 (600-1 1/4)	820-1 5/8 579 (600-1 5/8)	960-2 1/4 719 (800-2 1/4)
C CIRCLING**	820-1 579 (600-1)			

RNAV (GPS) RWY 23

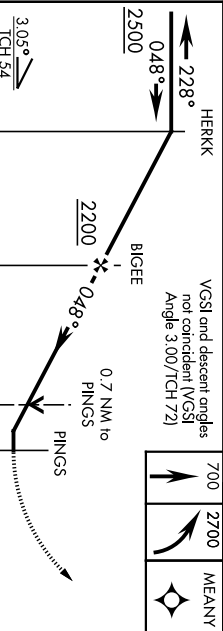
NE-1, 04 JAN 2018 to 01 FEB 2018

NE-1, 04 JAN 2018 to 01 FEB 2018

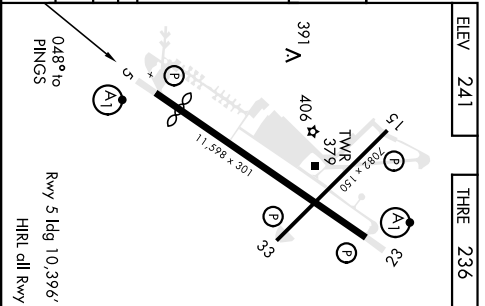
APCH CRS 048°	Rwy ldg 10,396 THRE 236 Appt Elev 241	AL-447 [USAF]	WESTOVER ARB METROPOLITAN (KCEF)
<p>▼ * When AJS inop increase CAT AB RVR to 55, vis to 1 mile, CAT CD vis to 1 1/2 miles. ** Circling not authorized all CAT act from Rwy 23 clockwise to Rwy 33.</p>		AISF-1 MISSED APPROACH: Climb to 700 then climbing left turn to 2700 direct MEANY and hold. Expect radar vectors.	
<p>UNAV visibility reduction by helicopters NA. DME/DME RNP-0.3 NA.</p>			
<p>ATIS * 127.525</p>		BRADLEY APP CON 125.35 281.5	WESTOVER TOWER * 134.85 (CTAF) 348.75
			GND CON 118.35 275.8



EMERG SAFE ALT 100 NM 6400

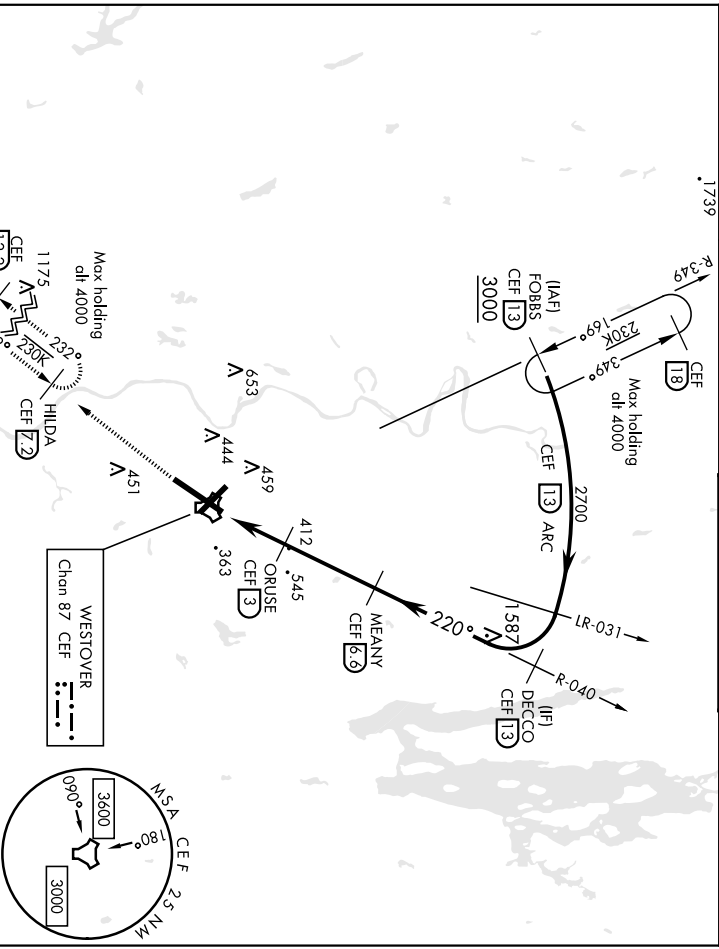


CATEGORY	A	B	C	D
LNAV MDA *	700/40 462 (500-3/4)	700/50 462 (500-1)		
CIRCLING **	780-1 539 (600-1)	820-1 1/2 579 (600-1 1/2)	960-2 1/4 719 (800-2 1/4)	



TACAN RWY 23

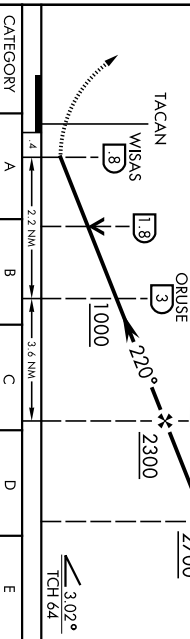
TACAN CEF	APCH CRS	Rwy Idg 11,598	AL-447 [USAF]	WESTOVER ARB METROPOLITAN (KCEF)
Chan 87	TDZE 241	Appt Elev 241	ALSf-1	MISSED APPROACH: Climb to 2500 via CEF R-232 to HILDA and hold, expect radar vectors.
▲ * When A1S Inop, increase CAT AB RWY to 55 and vis to 1 mile. CAT CDE vis to 1/2 mile. ** Circling not authorized; all CAT defn from RWY 23 clockwise to RWY 33.				
ATIS *	BRADLEY APP CON	WESTOVER TOWER *	GND CON	
127.525	125.35 281.5	134.85 (CTAF) 348.75	118.35 275.8	



RADAR REQUIRED

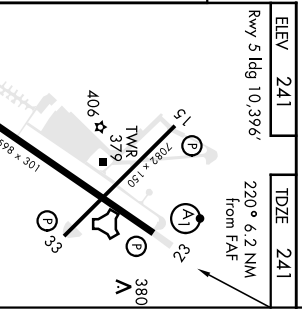
EMERG SAFE ALT 100 NM 6400

2300 CEF	HILDA CEF	VGS1 and descent angles not coincident
R-232	72	



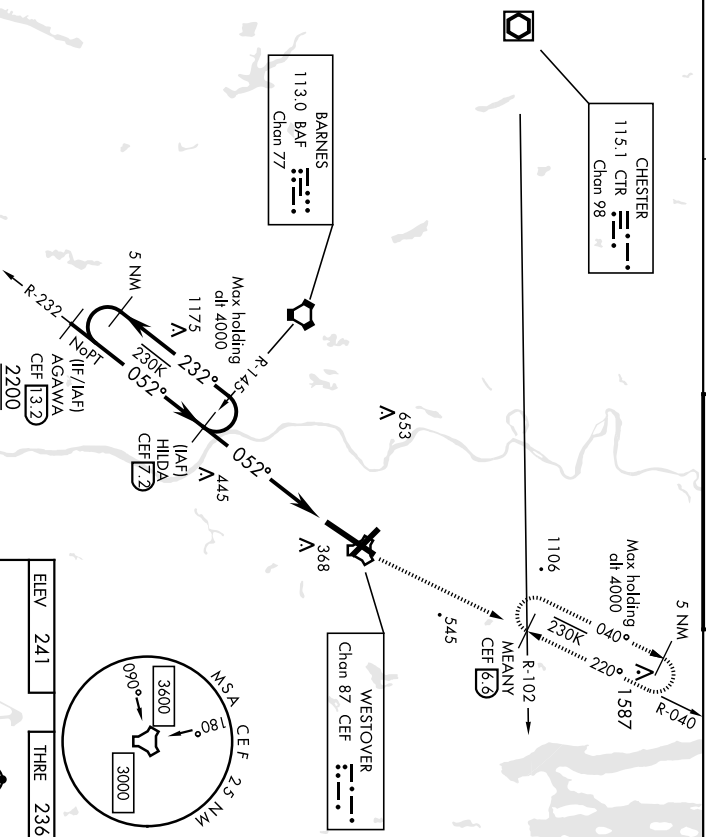
CATEGORY	A	B	C	D	E
S-23 *	760/24 519 (600-1/2)	800-1	820-1 1/2	960-2/4	980-2/2
CIRCLING **	539 (600-1)	559 (600-1)	579 (600-1 1/2)	719 (800-2/4)	739 (800-2 1/2)

ELEV 241	TDZE 241
Rwy 5 Idg 10,396'	220° 6.2 NM from FAF

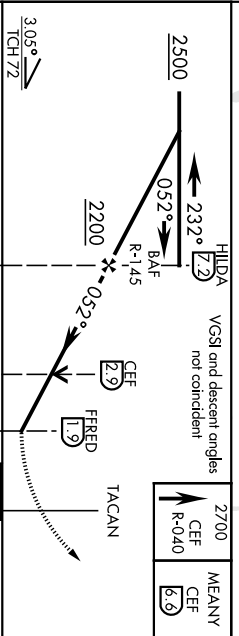


TACAN CEF Chan 87	APCH CRS 052°	Rwy Idg 10,396'	THRE 236	ALSf-1 	WESTOVER TOWER * 134.85 (CTAF) 348.75	GND CON 118.35 275.8
AL-447 [USAF]					MISSED APPROACH: Climb to 2700 via CEF R-040 to MEANY and hold, expect radar vectors.	
ATIS *	127.525	BRADLEY APP CON	125.35 281.5			

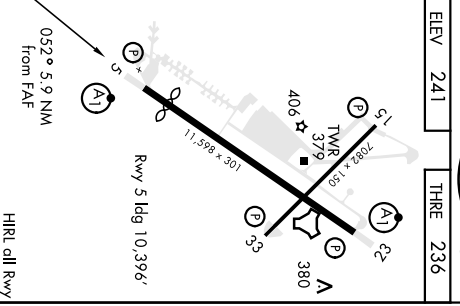
▼ * When ATIS msg increase CAT AB RVR to 55 and vis to 1 mile, CAT CDE vis to 1/2 miles.
 ** Circling not authorized all CAT act from RWY 23 clockwise to RWY 33.



RADAR REQUIRED
EMERG SAFE ALT 100 NM 6400



CATEGORY	A	B	C	D	E
5-5 *	820/440 584 (600-3/4)		820-1 1/4 584 (600-1 1/2)		
CIRCLING **	820-1 579 (600-1)		820-1 3/4 960-2 1/4 579 (600-1 3/4) 719 (800-2 1/2) 739 (800-2 1/2)		980-2 1/2



ELEV	241	THRE	236
------	-----	------	-----