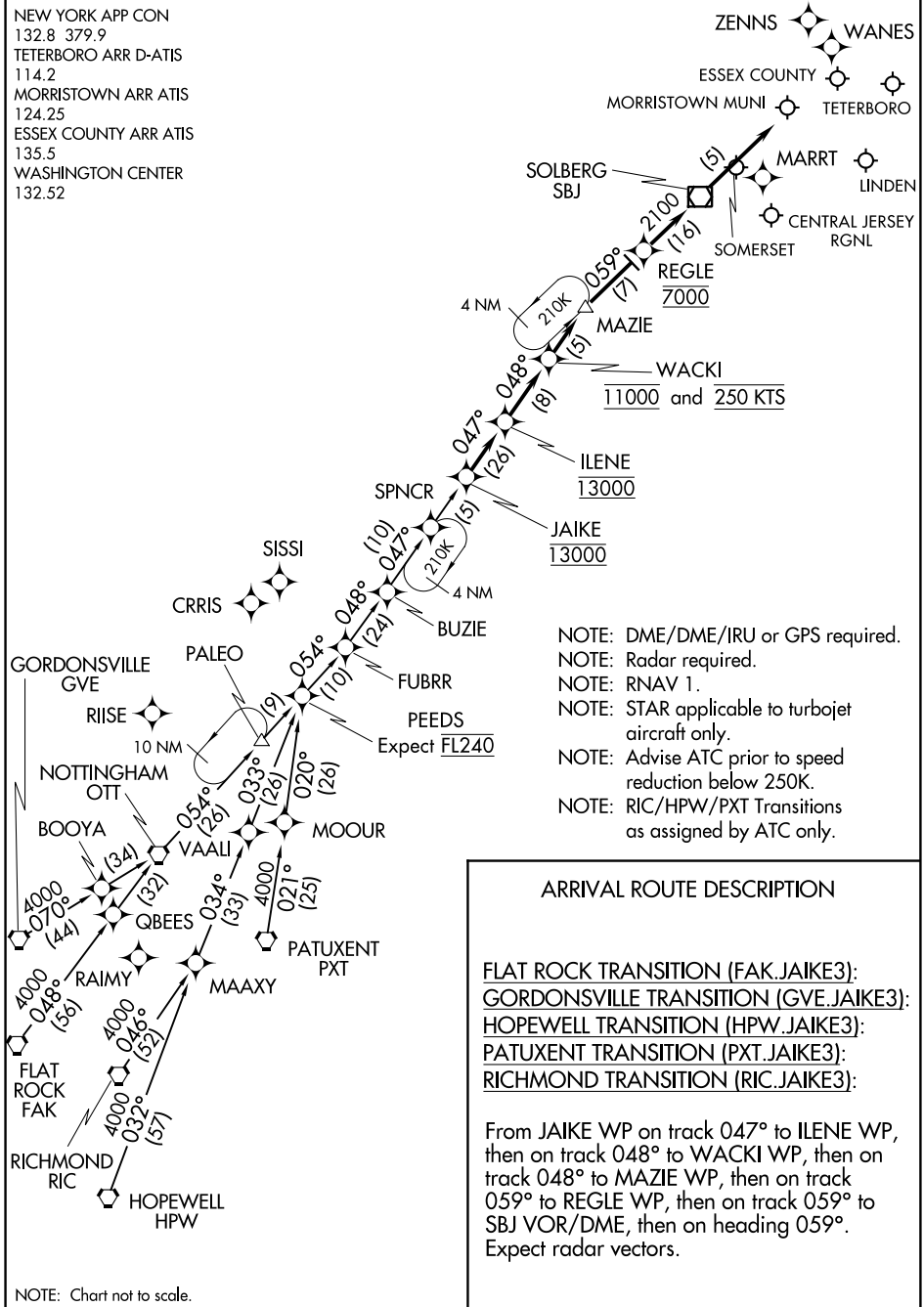


# JAIKE THREE ARRIVAL (RNAV)

TETERBORO, NEW JERSEY

NEW YORK APP CON  
 132.8 379.9  
 TETERBORO ARR D-ATIS  
 114.2  
 MORRISTOWN ARR ATIS  
 124.25  
 ESSEX COUNTY ARR ATIS  
 135.5  
 WASHINGTON CENTER  
 132.52



- NOTE: DME/DME/IRU or GPS required.
- NOTE: Radar required.
- NOTE: RNAV 1.
- NOTE: STAR applicable to turbojet aircraft only.
- NOTE: Advise ATC prior to speed reduction below 250K.
- NOTE: RIC/HPW/PXT Transitions as assigned by ATC only.

## ARRIVAL ROUTE DESCRIPTION

- FLAT ROCK TRANSITION (FAK.JAIKE3):
- GORDONSVILLE TRANSITION (GVE.JAIKE3):
- HOPEWELL TRANSITION (HPW.JAIKE3):
- PATUXENT TRANSITION (PXT.JAIKE3):
- RICHMOND TRANSITION (RIC.JAIKE3):

From JAIKE WP on track 047° to ILENE WP, then on track 048° to WACKI WP, then on track 048° to MAZIE WP, then on track 059° to REGLE WP, then on track 059° to SBJ VOR/DME, then on heading 059°. Expect radar vectors.

NOTE: Chart not to scale.

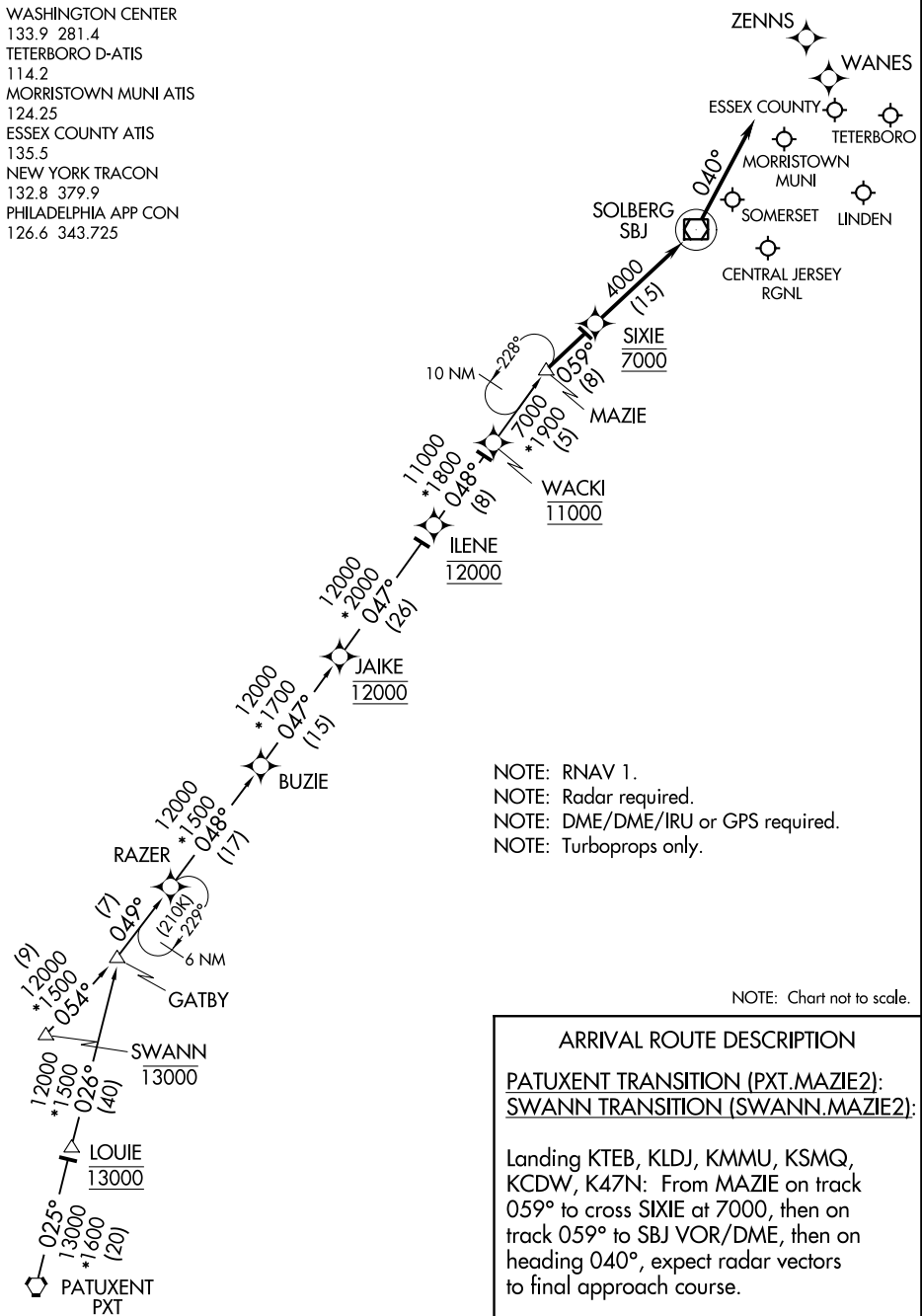
# JAIKE THREE ARRIVAL (RNAV)

TETERBORO, NEW JERSEY

# MAZIE TWO ARRIVAL (RNAV)

TETERBORO, NEW JERSEY

WASHINGTON CENTER  
 133.9 281.4  
 TETERBORO D-ATIS  
 114.2  
 MORRISTOWN MUNI ATIS  
 124.25  
 ESSEX COUNTY ATIS  
 135.5  
 NEW YORK TRACON  
 132.8 379.9  
 PHILADELPHIA APP CON  
 126.6 343.725



NOTE: RNAV 1.  
 NOTE: Radar required.  
 NOTE: DME/DME/IRU or GPS required.  
 NOTE: Turboprops only.

NOTE: Chart not to scale.

**ARRIVAL ROUTE DESCRIPTION**  
PATUXENT TRANSITION (PXT.MAZIE2):  
SWANN TRANSITION (SWANN.MAZIE2):  
 Landing KTEB, KLDJ, KMMU, KSMQ, KCDW, K47N: From MAZIE on track 059° to cross SIXIE at 7000, then on track 059° to SBJ VOR/DME, then on heading 040°, expect radar vectors to final approach course.

NE-2, 01 MAR 2018 to 29 MAR 2018

NE-2, 01 MAR 2018 to 29 MAR 2018

# MAZIE TWO ARRIVAL (RNAV)

TETERBORO, NEW JERSEY

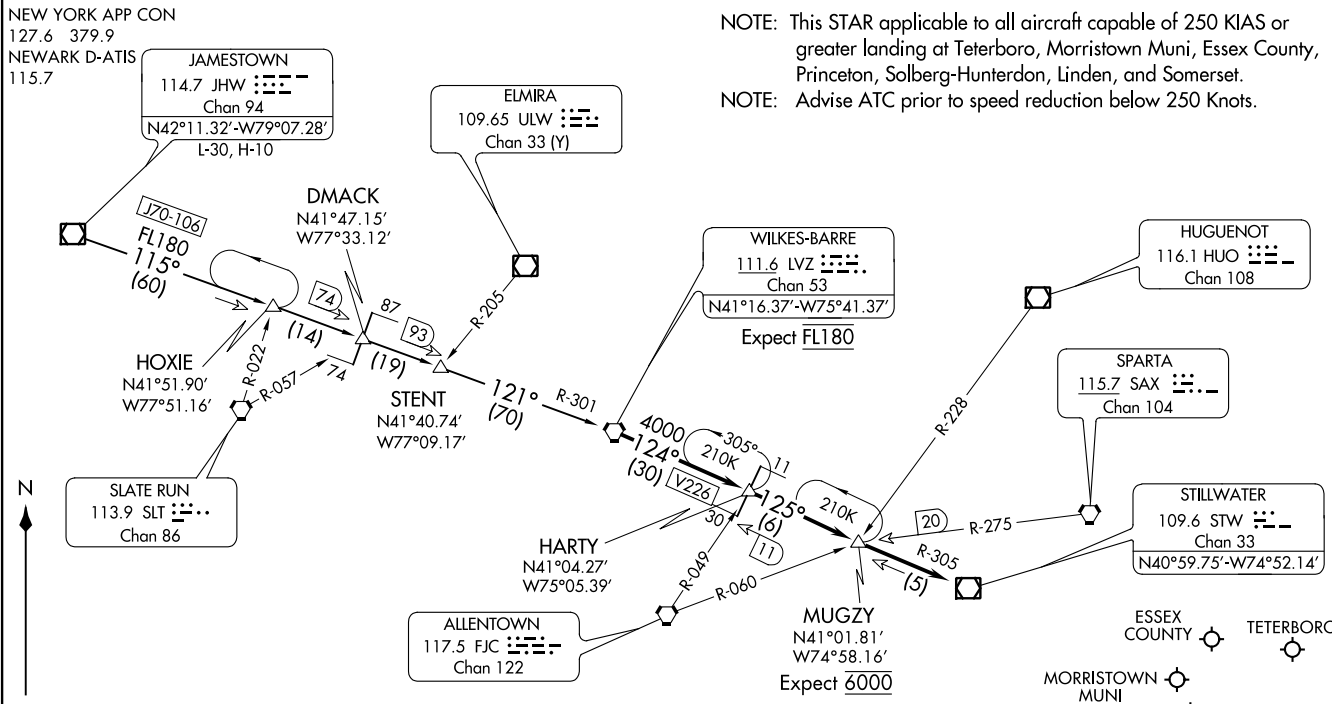
(LVZ.LVZ4) 200CT11

WILKES-BARRE FOUR ARRIVAL

(LVZ.LVZ4) 17117

WILKES-BARRE FOUR ARRIVAL

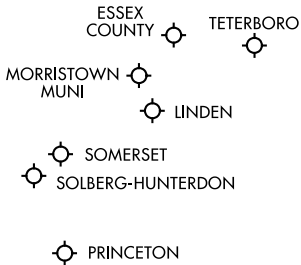
AL-890 (FAA)



NOTE: This STAR applicable to all aircraft capable of 250 KIAS or greater landing at Teterboro, Morristown Muni, Essex County, Princeton, Solberg-Hunterdon, Linden, and Somerset.  
 NOTE: Advise ATC prior to speed reduction below 250 Knots.

ARRIVAL ROUTE DESCRIPTION

JAMESTOWN TRANSITION (JHW.LVZ4): From over JHW VOR/DME on JHW R-115 and LVZ R-301 to LVZ VORTAC. Thence . . . .  
 . . . . from over LVZ VORTAC, on LVZ R-124 and STW R-305 to STW VOR/DME. Expect radar vectors to final approach course.



NOTE: Chart not to scale.

TETERBORO, NEW JERSEY

TETERBORO, NEW JERSEY