

WAAS CH 45934 W06A	APP CRS 054°	Rwy Idg TDZE Apt Elev	3757 1430 1444
--	------------------------	-----------------------------	---

RNAV (GPS) RWY 6

CABLE (CCB)

RNP APCH.

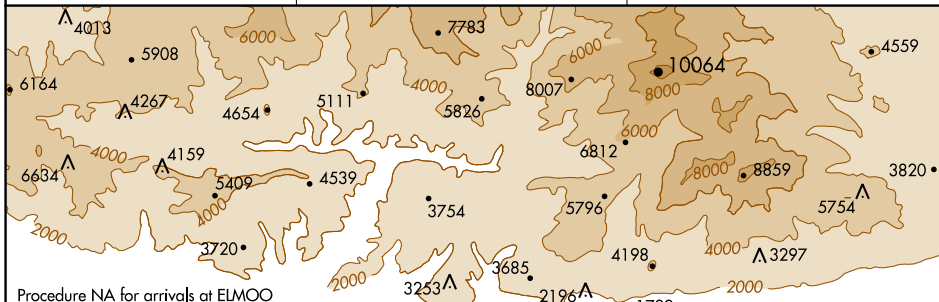
NA Circling NA northwest of Rwy 6-24. Rwy 6 helicopter visibility reduction below 3/4 SM NA. Circling Rwy 24 NA at night. When local altimeter setting not received, use Ontario altimeter setting and increase all MDA 100 feet.

MISSED APPROACH: Climb to 1900 then climbing right turn to 5500 direct ADAMM and hold, continue climb-in-hold to 5500.

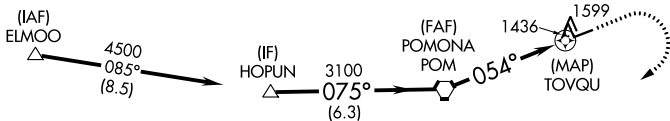
AWOS-3P
119.525

SOCAL APP CON
125.5 349.0

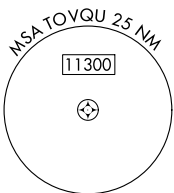
UNICOM
123.0 (CTAF) **1**



Procedure NA for arrivals at ELMOO on V186 westbound.

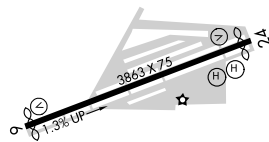
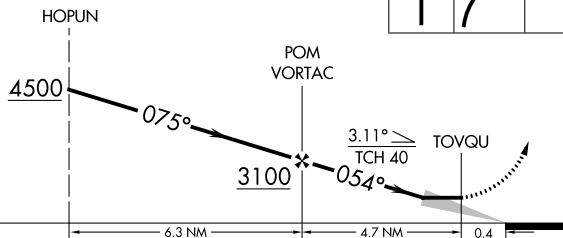


Final approach course offset 1.02°



ELEV 1444	TDZE 1430
-----------	-----------

VGSI and descent angles not coincident (VGSI Angle 4.00/TCH 34).



CATEGORY	A	B	C	D
LP MDA	1780-1	350 (400-1)	1780-1 1/8 350 (400-1 1/8)	NA
LNAV MDA	1940-1	510 (500-1)	1940-1 1/8 510 (500-1 1/8)	NA
C CIRCLING	2020-1	576 (600-1)	2140-2 696 (700-2)	NA

MIRL Rwy 6-24 **1**

SW-3, 16 JUL 2020 to 13 AUG 2020

SW-3, 16 JUL 2020 to 13 AUG 2020

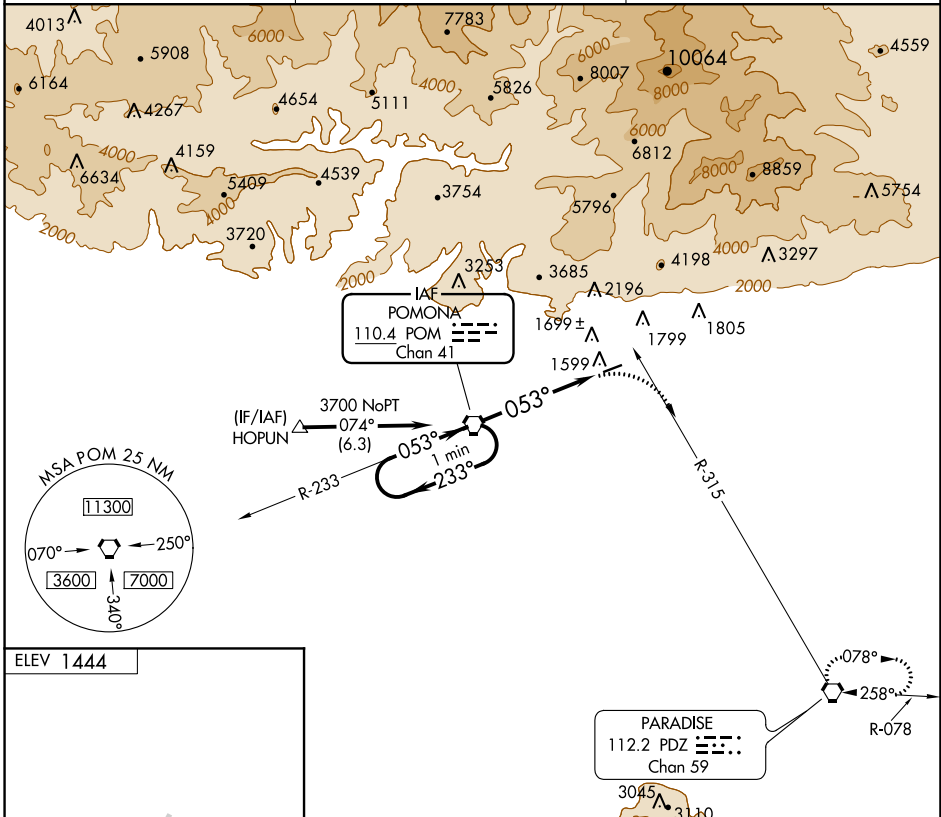
VORTAC POM 110.4 Chan 41	APP CRS 053°	Rwy Idg TDZE Apt Elev 1444	N/A N/A 1444
---------------------------------------	------------------------	--	---

VOR-A
CABLE (CCB)

NA Circling NA northwest of Rwy 6-24. Procedure NA at night.
When local altimeter setting not received, use Ontario altimeter setting and increase all MDA 100 feet and all visibilities 1/2 SM.
Rwy 24 helicopter visibility reduction below 1 SM NA.

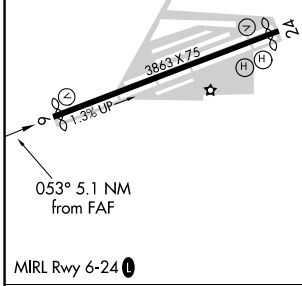
MISSED APPROACH: Climbing right turn to 4000 via heading 105° and PDZ R-315 to PDZ VORTAC and hold.

AWOS-3P 119.525	SOCAL APP CON 125.5 349.0	UNICOM 123.0 (CTAF) 0
---------------------------	-------------------------------------	---------------------------------

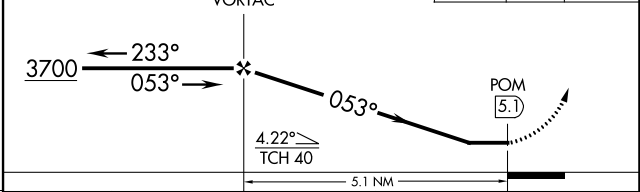


SW-3, 16 JUL 2020 to 13 AUG 2020

SW-3, 16 JUL 2020 to 13 AUG 2020



One Minute Holding Pattern	VGSI and descent angles not coincident (VGSI Angle 4.00/ TCH 34).	4000	PDZ R-315	PDZ
----------------------------	---	------	-----------	-----



FAF to MAP 5.1 NM					
Knots	60	90	120	150	180
Min:Sec	5:06	3:24	2:33	2:02	1:42
CIRCLING	2240-1 796 (800-1)		2240-2 1/4 796 (800-2 1/4)		NA