

WAAS CH <b>45934</b> <b>W06A</b>	APP CRS <b>054°</b>	Rwy Idg TDZE Apt Elev	<b>3757</b> <b>1430</b> <b>1444</b>
--	------------------------	-----------------------------	---

# RNAV (GPS) RWY 6

CABLE (CCB)

RNP APCH.

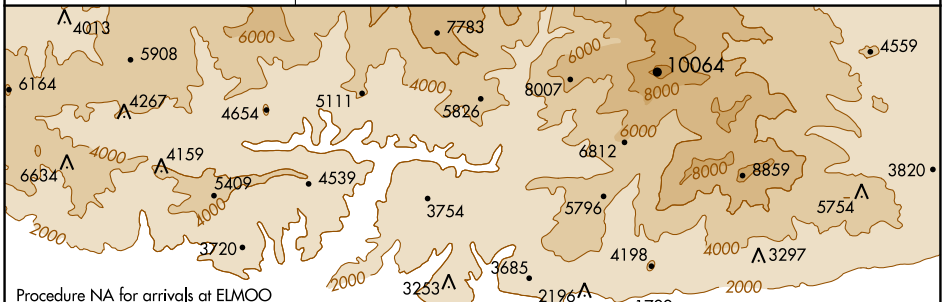
**NA** Circling NA northwest of Rwy 6-24. Rwy 6 helicopter visibility reduction below 3/4 SM NA. Circling Rwy 24 NA at night. When local altimeter setting not received, use Ontario altimeter setting and increase all MDA 100 feet.

**MISSED APPROACH:** Climb to 1900 then climbing right turn to 5500 direct ADAMM and hold, continue climb-in-hold to 5500.

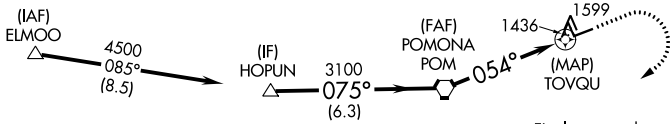
AWOS-3P  
**119.525**

SOCAL APP CON  
**125.5 349.0**

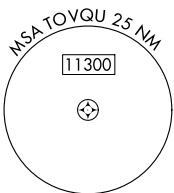
UNICOM  
**123.0** (CTAF) **1**



Procedure NA for arrivals at ELMOO on V186 westbound.

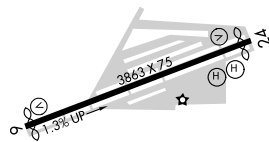
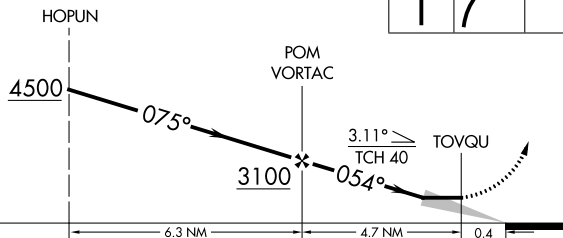


Final approach course offset 1.02°



ELEV 1444	TDZE 1430
-----------	-----------

VGSI and descent angles not coincident (VGSI Angle 4.00/TCH 34).



CATEGORY	A	B	C	D
LP MDA	1780-1	350 (400-1)	1780-1 1/8 350 (400-1 1/8)	NA
LNAV MDA	1940-1	510 (500-1)	1940-1 1/8 510 (500-1 1/8)	NA
<b>C</b> CIRCLING	2020-1	576 (600-1)	2140-2 696 (700-2)	NA

MIRL Rwy 6-24 **1**

SW-3, 16 JUL 2020 to 13 AUG 2020

SW-3, 16 JUL 2020 to 13 AUG 2020

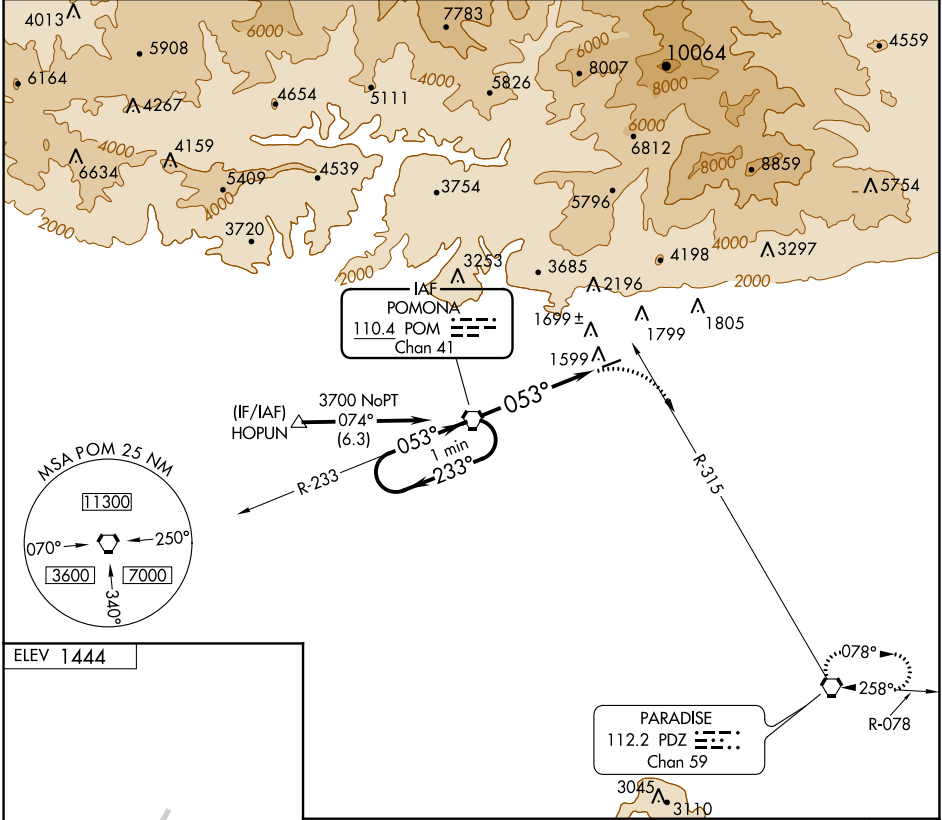
VORTAC POM <b>110.4</b> Chan 41	APP CRS <b>053°</b>	Rwy Idg TDZE Apt Elev <b>1444</b>	<b>N/A</b> <b>N/A</b> <b>1444</b>
---------------------------------------	------------------------	--	---

**VOR-A**  
CABLE (CCB)

**NA** Circling NA northwest of Rwy 6-24. Procedure NA at night.  
When local altimeter setting not received, use Ontario altimeter setting and increase all MDA 100 feet and all visibilities ½ SM.  
Rwy 24 helicopter visibility reduction below 1 SM NA.

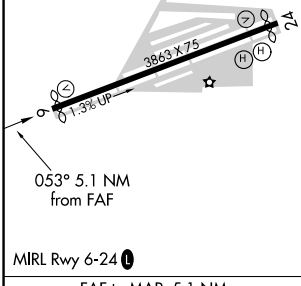
MISSED APPROACH: Climbing right turn to 4000 via heading 105° and PDZ R-315 to PDZ VORTAC and hold.

AWOS-3P <b>119.525</b>	SOCAL APP CON <b>125.5 349.0</b>	UNICOM <b>123.0 (CTAF) 0</b>
---------------------------	-------------------------------------	---------------------------------

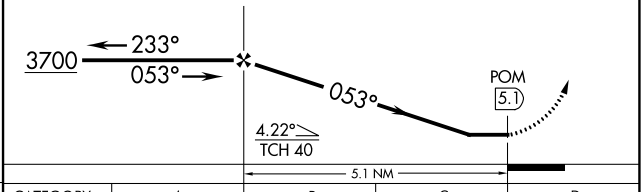


SW-3, 16 JUL 2020 to 13 AUG 2020

SW-3, 16 JUL 2020 to 13 AUG 2020



One Minute Holding Pattern	VGS and descent angles not coincident (VGS Angle 4.00/ TCH 34).		4000	PDZ R-315	PDZ
----------------------------	---	--	------	-----------	-----



FAF to MAP 5.1 NM					
Knots	60	90	120	150	180
Min:Sec	5:06	3:24	2:33	2:02	1:42

CATEGORY	A	B	C	D
<b>CIRCLING</b>	2240-1	796 (800-1)	2240-2¼ 796 (800-2¼)	NA