

BOBKT FOUR DEPARTURE (RNAV)
(BOBKT4.BOBKT) 24MAY18

BOBKT FOUR DEPARTURE (RNAV)

BOZEMAN, MONTANA
BOZEMAN YELLOWSTONE INTL (BZN)

**TOP ALTITUDE:
16000**

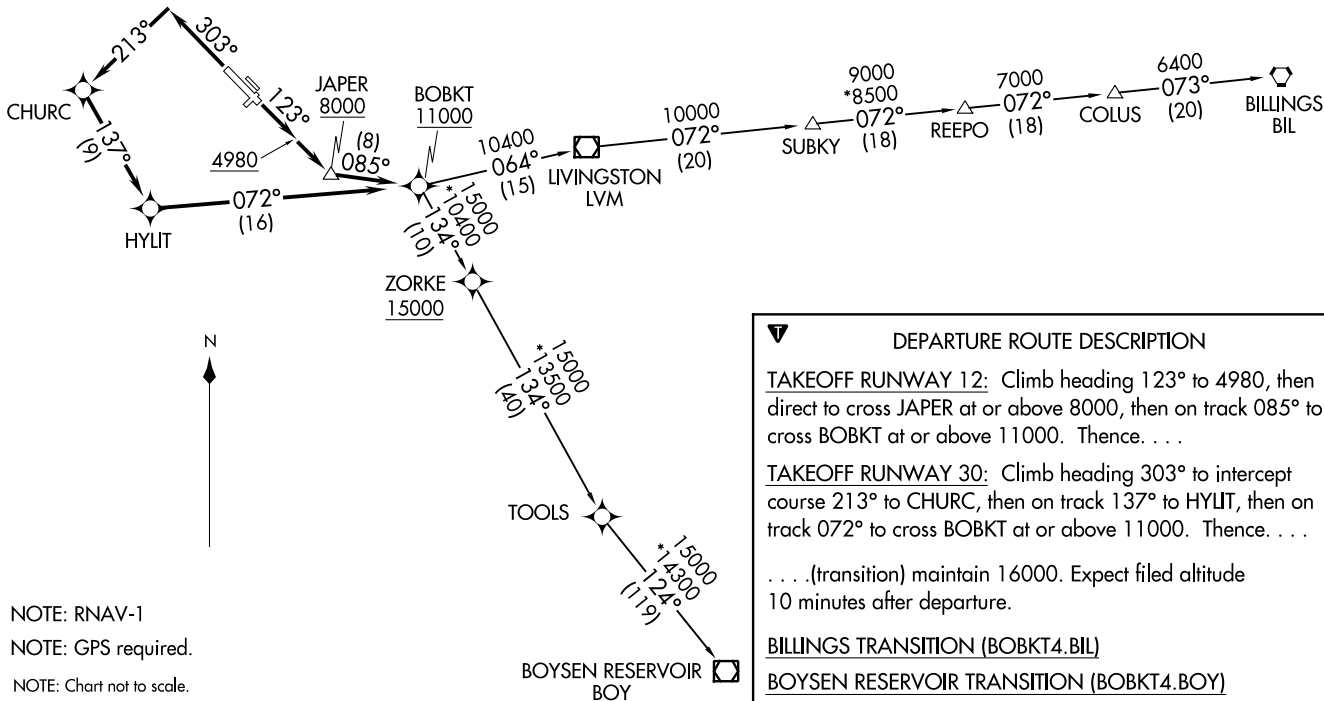
TAKEOFF MINIMUMS

Rwys 3, 11, 21, 29: NA - ATC.

Rwy 12: Standard with minimum climb of 395' per NM to 15000.

Rwy 30: Standard with minimum climb of 250' per NM to 15000.

ATIS 135.425
GND CON 121.8
BOZEMAN TOWER* 118.2 (CTAF)
BIG SKY DEP CON* 118.975 226.675
GREAT FALLS RADIO 122.5



NOTE: RNAV-1
NOTE: GPS required.
NOTE: Chart not to scale.

DEPARTURE ROUTE DESCRIPTION

TAKEOFF RUNWAY 12: Climb heading 123° to 4980, then direct to cross JAPER at or above 8000, then on track 085° to cross BOBKT at or above 11000. Thence. . . .

TAKEOFF RUNWAY 30: Climb heading 303° to intercept course 213° to CHURC, then on track 137° to HYLT, then on track 072° to cross BOBKT at or above 11000. Thence. . . .

. . . .(transition) maintain 16000. Expect filed altitude 10 minutes after departure.

BILLINGS TRANSITION (BOBKT4.BIL)
BOYSEN RESERVOIR TRANSITION (BOBKT4.BOY)

(BOBKT4.BOBKT) 20198
BOBKT FOUR DEPARTURE (RNAV)

BOBKT FOUR DEPARTURE (RNAV)

AL-59 (FAA)
BOZEMAN, MONTANA
BOZEMAN YELLOWSTONE INTL (BZN)

(TEERX4.TEERX) 18144

TEERX FOUR DEPARTURE (RNAV)

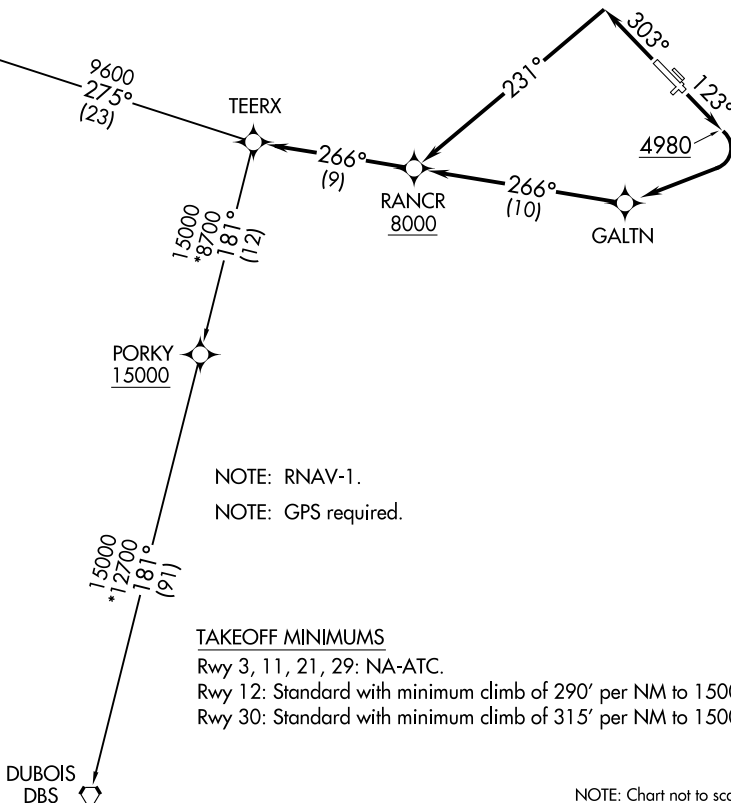
BOZEMAN YELLOWSTONE INTL (BZN)
BOZEMAN, MONTANA

AL-59 (FAA)

TOP ALTITUDE:
16000

ATIS
135.425
GND CON
121.8
BOZEMAN TOWER*
118.2 (CTAF)
BIG SKY DEP CON*
118.975 226.675
GREAT FALLS RADIO
122.5

WHITEHALL
HIA



NOTE: RNAV-1.
NOTE: GPS required.

TAKEOFF MINIMUMS

Rwy 3, 11, 21, 29: NA-ATC.

Rwy 12: Standard with minimum climb of 290' per NM to 15000.

Rwy 30: Standard with minimum climb of 315' per NM to 15000.

NOTE: Chart not to scale.



DEPARTURE ROUTE DESCRIPTION

TAKEOFF RUNWAY 12: Climb heading 123° to 4980, then climbing right turn direct GALTN, then on track 266° to cross RANCR at or above 8000, then on track 266° to TEERX, thence. . . .

TAKEOFF RUNWAY 30: Climb heading 303° to intercept course 231° to cross RANCR at or above 8000, then on track 266° to TEERX, thence. . . .

. . . .(transition). Maintain 16000, expect filed altitude 10 minutes after departure.

DUBOIS TRANSITION (TEERX4.DBS)

WHITEHALL TRANSITION (TEERX4.HIA)

TEERX FOUR DEPARTURE (RNAV)

(TEERX4.TEERX) 24MAY18

BOZEMAN, MONTANA
BOZEMAN YELLOWSTONE INTL (BZN)

NW-1, 19 MAY 2022 to 16 JUN 2022

NW-1, 19 MAY 2022 to 16 JUN 2022

(HIA5.HIA) 18144

WHITEHALL FIVE DEPARTURE


BOZEMAN YELLOWSTONE INTL (BZN)

AL-59 (FAA)


BOZEMAN, MONTANA

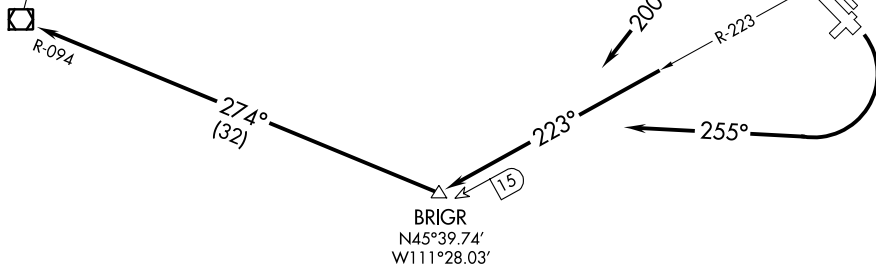
ATIS
 135.425
 GND CON
 121.8
 BOZEMAN TOWER*
 118.2 (CTAF)
 BIG SKY DEP CON*
 118.975 226.675
 GREAT FALLS RADIO
 122.5

TOP ALTITUDE:
16000

WHITEHALL
 113.7 HIA 
 Chan 84
 N45°51.71'-W112°10.18'

L-13, H-1

BOZEMAN
 112.4 BZN 
 Chan 71



TAKEOFF MINIMUMS

Rwys 3, 11, 21, 29: NA- ATC.

Rwys 12, 30: Standard.

NOTE: Chart not to scale.



DEPARTURE ROUTE DESCRIPTION

TAKEOFF RUNWAY 12: Climbing right turn heading 255° to intercept BZN R-223 to BRIGR, then continue climbing on HIA R-094 to HIA VOR/DME, cross HIA VOR/DME at or above MCA or MEA for route of flight.

TAKEOFF RUNWAY 30: Climbing left turn heading 200° to intercept BZN R-223 to BRIGR, then continue climbing on HIA R-094 to HIA VOR/DME, cross HIA VOR/DME at or above MCA or MEA for route of flight.

WHITEHALL FIVE DEPARTURE

(HIA5.HIA) 24MAY18

BOZEMAN, MONTANA

BOZEMAN YELLOWSTONE INTL (BZN)

NW-1, 19 MAY 2022 to 16 JUN 2022

NW-1, 19 MAY 2022 to 16 JUN 2022