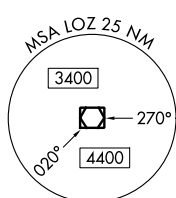


LOC/DME I-BYL 108.3 Chan 20	APP CRS 200°	Rwy Idg 5498 TDZE 1178 Apt Elev 1178
---	------------------------	---

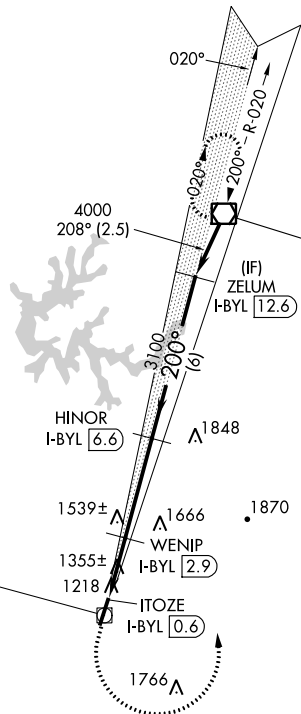
LOC/DME RWY 20

WILLIAMSBURG-WHITLEY COUNTY (BYL)

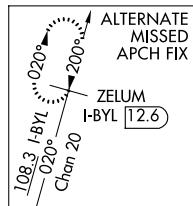
<p>V NA ▲ NA</p> <p>VDP NA with London altimeter setting. When local altimeter setting not received, use London altimeter setting and increase all MDA 60 feet, increase Cat D Circling visibility 1/8 mile.</p>	<p>MISSED APPROACH: Climb to 1800 then climbing left turn to 4000 direct LOZ VOR/DME and hold.</p>	
<p>AWOS-3 119.575</p>	<p>INDIANAPOLIS CENTER 124.625 371.925</p>	<p>UNICOM 122.7 (CTAF)</p>



Procedure NA for arrivals on LOZ VOR/DME airway radials 144 CW 245.



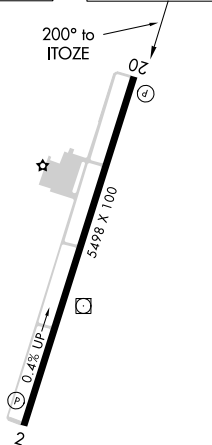
LOCALIZER 108.3
I-BYL [2.2]
Chan 20
LOC offset 2.88°



SE-1, 01 MAR 2018 to 29 MAR 2018

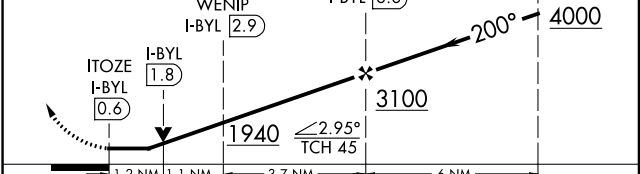
SE-1, 01 MAR 2018 to 29 MAR 2018

ELEV 1178	TDZE 1178
-----------	-----------



MIRL Rwy 2-20
REIL Rwy 2 and 20

1800	4000	LOZ	VGSI and descent angles not coincident (VGSI Angle 3.17/TCH 30).
------	------	-----	--



CATEGORY	A	B	C	D
S-20	1620-1	442 (500-1)	1620-1 3/8	442 (500-1 3/8)
CIRCLING	1760-1	582 (600-1)	1760-1 1/2 582 (600-1 1/2)	2080-3 902 (1000-3)

WAAS CH 53312 W02A	APP CRS 023°	Rwy Idg TDZE 1168 Apt Elev 1178	5498
--	------------------------	---	-------------

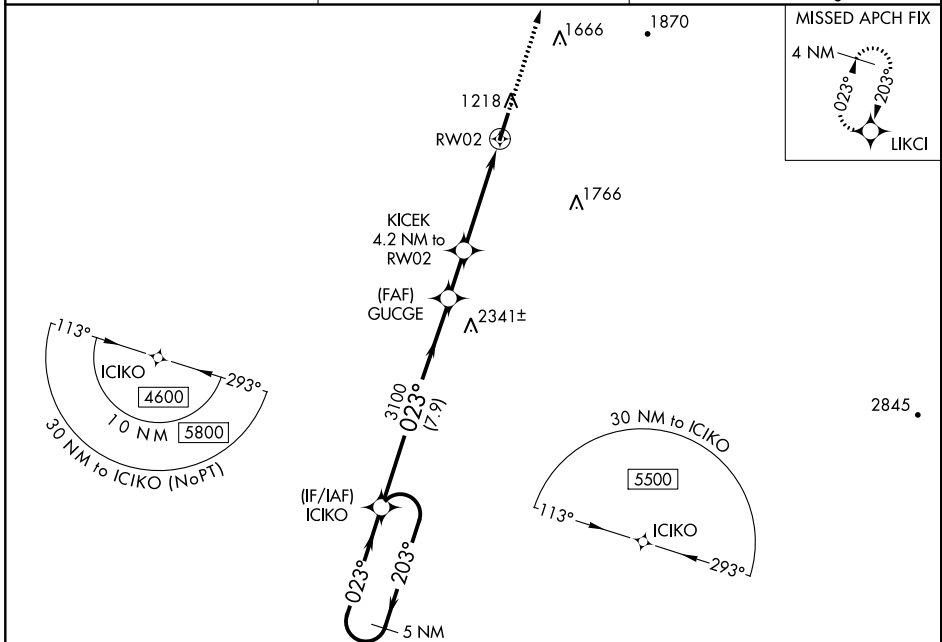
RNAV (GPS) RWY 2

WILLIAMSBURG-WHITLEY COUNTY (BYL)

When local altimeter setting not received, use London altimeter setting and increase DA 48 feet, MDA 60 feet and LPV all Cats visibility 1/8 mile. DME/DME RNP-0.3 NA. Visibility reduction by helicopters NA. VDP NA with London altimeter setting.

MISSED APPROACH: Climb to 4000 direct LKCI and hold.

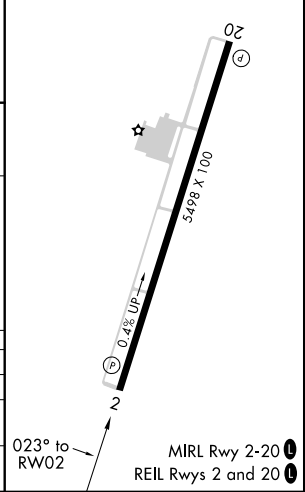
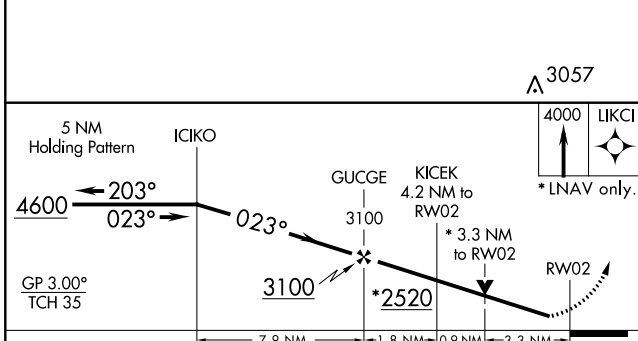
AWOS-3 119.575	INDIANAPOLIS CENTER 124.625 371.925	UNICOM 122.7 (CTAF) 0
--------------------------	---	---------------------------------



SE-1, 01 MAR 2018 to 29 MAR 2018

SE-1, 01 MAR 2018 to 29 MAR 2018

ELEV 1178	TDZE 1168
-----------	-----------



CATEGORY	A	B	C	D
LPV DA	1418 7/8		250 (300-7/8)	
LNAV MDA	2300-1 1/4 1132 (1200-1 1/4)	2300-1 1/2 1132 (1200-1 1/2)	2300-3	1132 (1200-3)
CIRCLING	2300-1 1/4 1122 (1200-1 1/4)	2300-1 1/2 1122 (1200-1 1/2)	2300-3	1122 (1200-3)

WAAS CH 70403 W20A	APP CRS 203°	Rwy Idg TDZE Apt Elev	5498 1178 1178
--	------------------------	-----------------------------	---

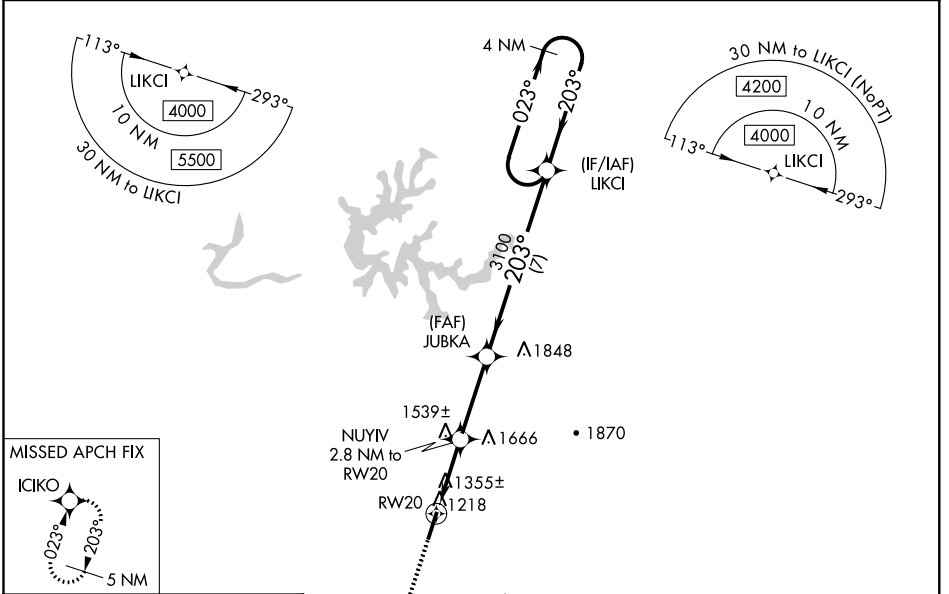
RNAV (GPS) RWY 20

WILLIAMSBURG-WHITLEY COUNTY (BYL)

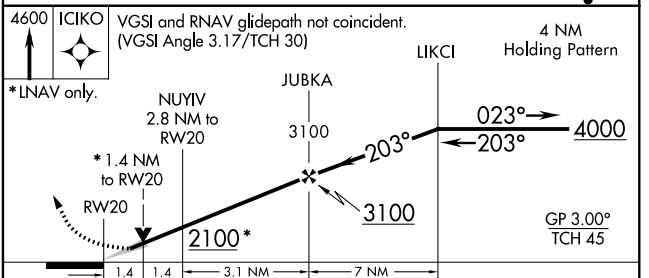
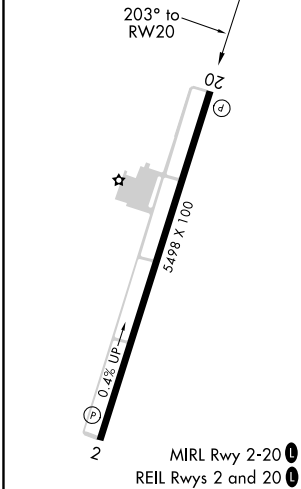
NA Baro-VNAV NA when using London altimeter setting. For uncompensated Baro-VNAV systems, LNAV/VNAV NA below -17°C (2°F) or above 36°C (96°F). When local altimeter setting not received, use London altimeter setting and increase all DA 48 feet, all MDA 60 feet, LPV all Cats visibility 1/8 mile, LNAV/VNAV all Cats visibility 1/4 mile, LNAV Cats C and D visibility 1/4 mile and Circling Cat C visibility 1/4 mile. DME/DME RNP-0.3 NA. VDP NA with London altimeter setting.

MISSED APPROACH:
Climb to 4600 direct ICIKO and hold.

AWOS-3 119.575	INDIANAPOLIS CENTER 124.625 371.925	UNICOM 122.7 (CTAF)
--------------------------	---	-------------------------------



ELEV 1178	TDZE 1178
-----------	-----------



CATEGORY	A	B	C	D
LPV DA		1554-1¼	376 (400-1¼)	
LNAV/VNAV DA		1670-1½	492 (500-1½)	
LNAV MDA	1680-1	502 (600-1)	1680-1¾	502 (600-1¾)
CIRCLING	1760-1	582 (600-1)	1760-1½	2080-3 902 (1000-3)

SE-1, 01 MAR 2018 to 29 MAR 2018

SE-1, 01 MAR 2018 to 29 MAR 2018

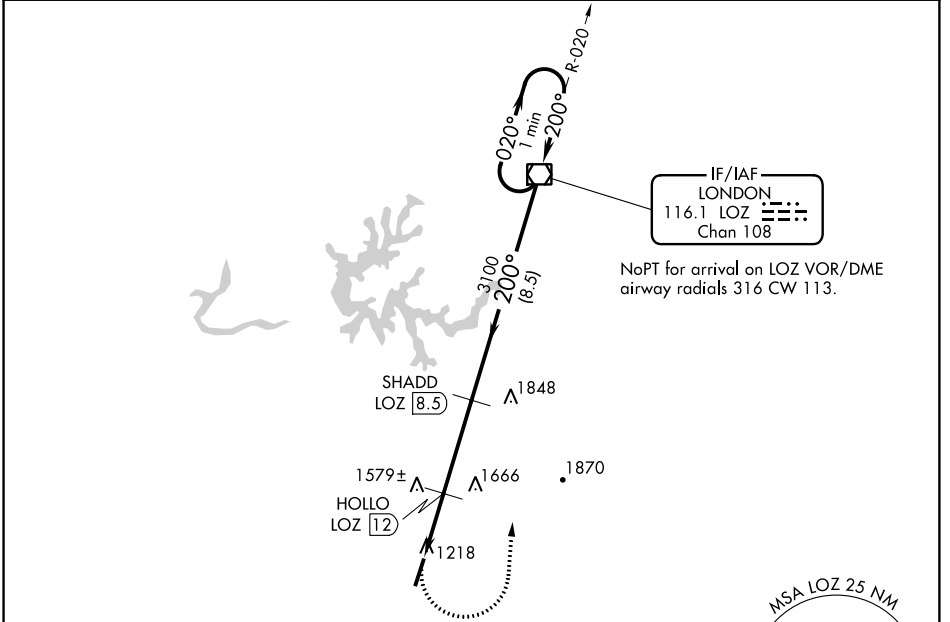
VOR/DME LOZ	APP CRS	Rwy Idg	5498
116.1	200°	TDZE	1178
Chan 108		Apt Elev	1178

VOR/DME RWY 20

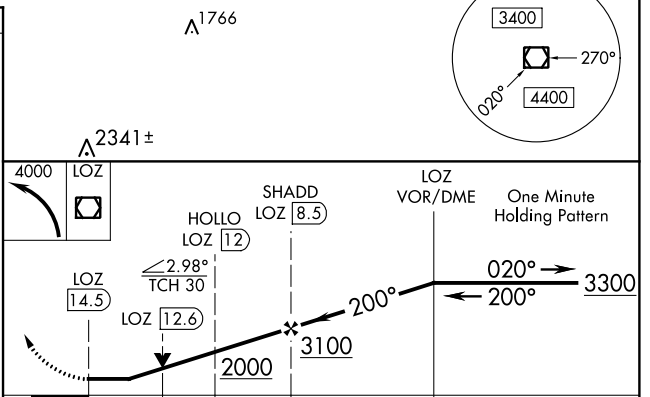
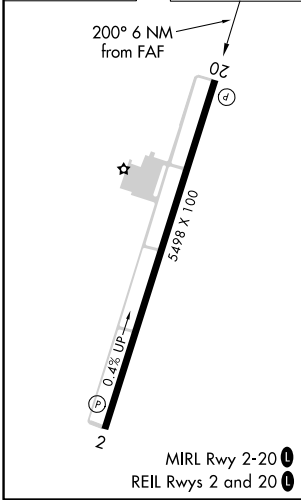
WILLIAMSBURG-WHITLEY COUNTY (BYL)

NA	When local altimeter setting not received, use London altimeter setting increase all MDA 60 feet and increase S-20 Cats C and D and Circling Cat C visibility 1/8 mile. VDP NA with London altimeter setting.	MISSED APPROACH: Climbing left turn to 4000 direct LOZ VOR/DME and hold.

AWOS-3 119.575	INDIANAPOLIS CENTER 124.625 371.925	UNICOM 122.7 (CTAF)
--------------------------	---	-------------------------------



ELEV 1178	TDZE 1178
-----------	-----------



CATEGORY	A	B	C	D
S-20	1840-1	662 (700-1)	1840-1 7/8	662 (700-1 7/8)
CIRCLING	1840-1	662 (700-1)	1840-1 7/8 662 (700-1 7/8)	2080-3 902 (1000-3)

SE-1, 01 MAR 2018 to 29 MAR 2018

SE-1, 01 MAR 2018 to 29 MAR 2018