

WAAS CH <b>48835</b> <b>W31A</b>	APP CRS <b>306°</b>	Rwy Idg <b>6143</b> TDZE <b>4940</b> Apt Elev <b>4970</b>
--	------------------------	--

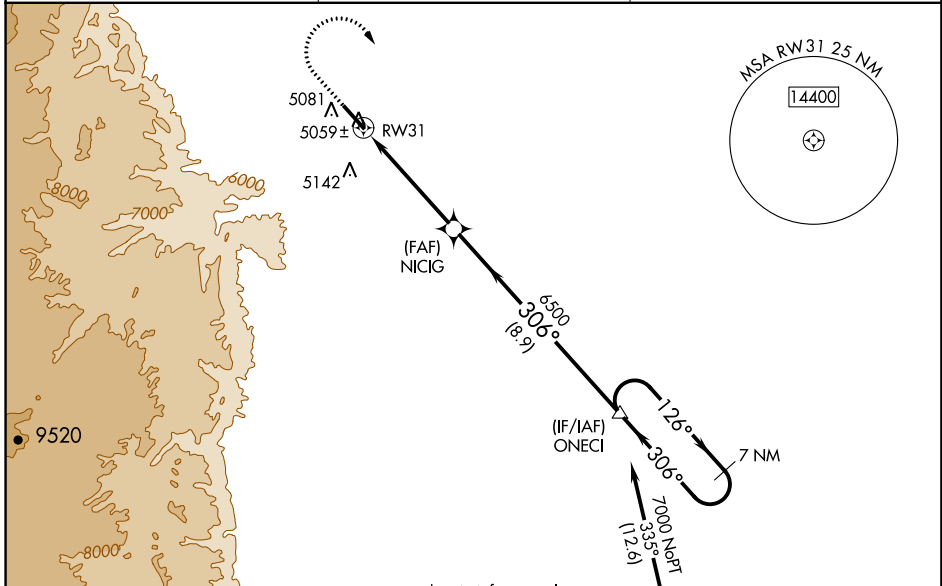
# RNAV (GPS) RWY 31

JOHNSON COUNTY (BYG)

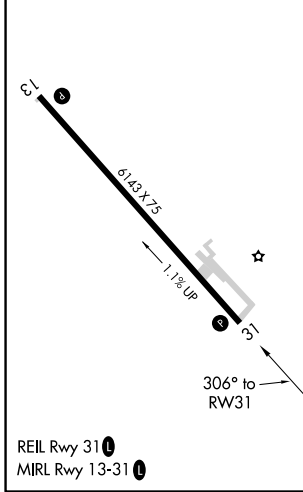
**⚠** When Rwy 13 VGS1 inop, Circling Rwy 13 NA at night. Baro-VNAV and VDP NA when using Sheridan altimeter setting. For uncompensated Baro-VNAV systems, LNAV/VNAV NA below -27°C (-1.6°F) or above 48°C (120°F). Circling NA southwest of Rwy 13-31. DME/DME RNP-0.3 NA. When local altimeter setting not received, use Sheridan altimeter setting and increase all DA/MDA 200 feet; increase all LPV, LNAV/VNAV, and all LNAV and Circling Cat C/D visibilities ¾ mile.

**⚠** MISSED APPROACH: Climb to 6000, then climbing right turn to 7000 direct ONECI and hold.

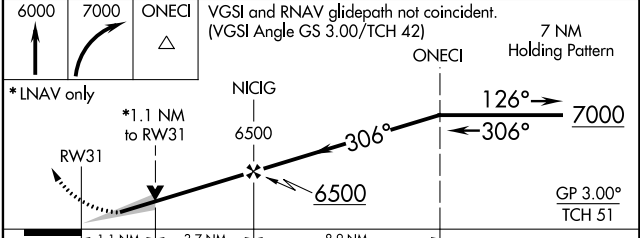
ASOS <b>135.425</b>	CASPER RADIO <b>122.025</b>	UNICOM <b>122.8 (CTAF) 0</b>
------------------------	--------------------------------	---------------------------------



ELEV 4970	TDZE 4940
-----------	-----------



Procedure NA for arrivals at CZI VOR/DME on airway radials 256 CW 048.



CATEGORY	A	B	C	D
LPV DA		5190-¾	250 (300-¾)	
LNAV/VNAV DA		5275-1½	335 (400-1½)	
LNAV MDA	5320-1	380 (400-1)	5320-1½	380 (400-1½)
<b>C</b> CIRCLING	5440-1	470 (500-1)	5460-1½ 490 (500-1½)	5600-2 630 (700-2)

VOR/DME CZI <b>117.3</b> Chan <b>120</b>	APP CRS <b>319°</b>	Rwy ldg <b>6143</b> TDZE <b>4940</b> Apt Elev <b>4970</b>
--	------------------------	---

# VOR/DME RWY 31

JOHNSON COUNTY (BYG)

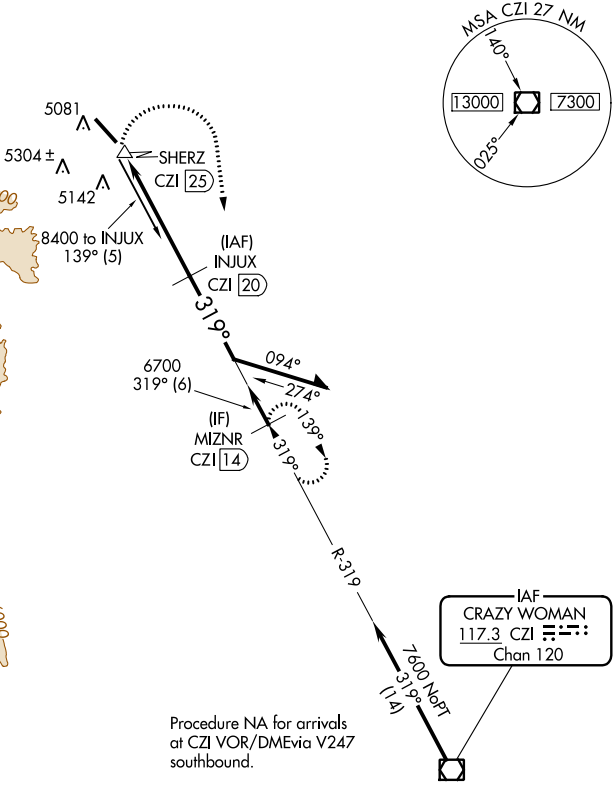
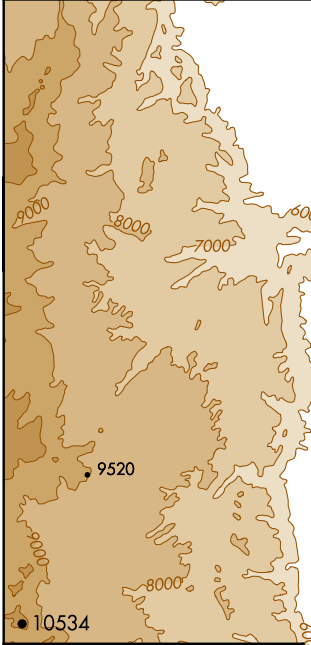
- ▼ Visibility reduction by helicopters NA. If local altimeter setting not received, use Sheridan altimeter setting and increase all MDAs 600 feet. When VGSI inoperative, procedure NA at night.
- ▲ MISSED APPROACH: Climbing right turn to 7600 via heading 160° and CZI VOR/DME R-319 to MIZNR/14 DME and hold.

MISSED APPROACH: Climbing right turn to 7600 via heading 160° and CZI VOR/DME R-319 to MIZNR/14 DME and hold.

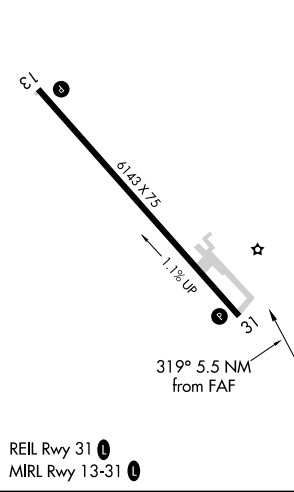
ASOS  
**135.425**

CASPER RADIO  
**122.025**

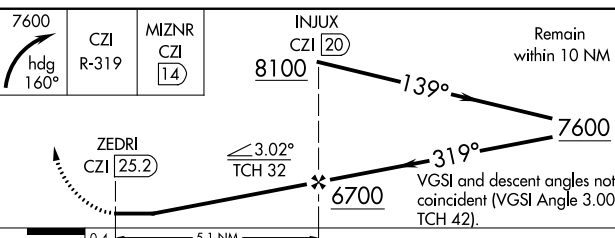
UNICOM  
**122.8 (CTAF) 0**



ELEV 4970 TDZE 4940



REIL Rwy 31  
MIRL Rwy 13-31



CATEGORY	A	B	C	D
S-31	5680-1 740 (800-1)	5680-1¼ 740 (800-1¼)	5680-2¼ 740 (800-2¼)	5680-2½ 740 (800-2½)
CIRCLING	5680-1 710 (800-1)	5680-1¼ 710 (800-1¼)	5680-2¼ 710 (800-2¼)	5680-2½ 710 (800-2½)

NW-1, 26 APR 2018 to 24 MAY 2018

NW-1, 26 APR 2018 to 24 MAY 2018