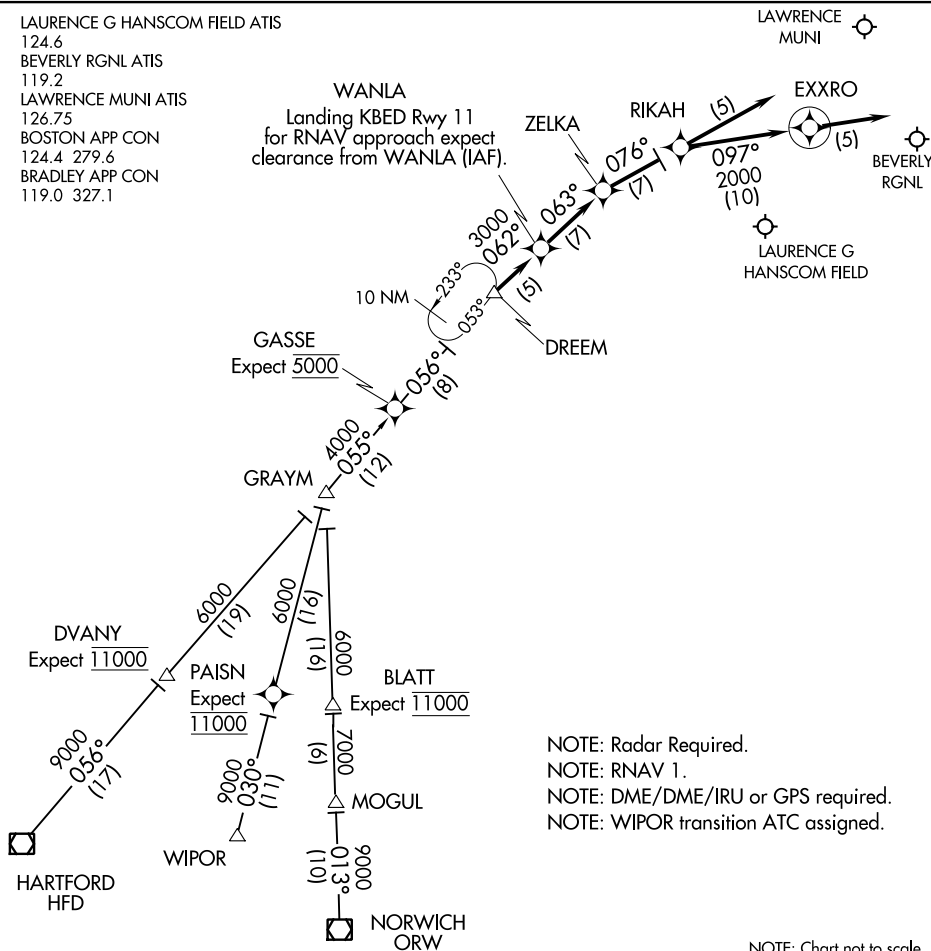


DREEM TWO ARRIVAL (RNAV)

BEDFORD, MASSACHUSETTS

LAURENCE G HANSCOM FIELD ATIS
 124.6
 BEVERLY RGNL ATIS
 119.2
 LAWRENCE MUNI ATIS
 126.75
 BOSTON APP CON
 124.4 279.6
 BRADLEY APP CON
 119.0 327.1

WANLA
 Landing KBED Rwy 11
 for RNAV approach expect
 clearance from WANLA (IAF).



NOTE: Radar Required.
 NOTE: RNAV 1.
 NOTE: DME/DME/IRU or GPS required.
 NOTE: WIPOR transition ATC assigned.

NOTE: Chart not to scale.

HARTFORD TRANSITION (HFD.DREEM2):
NORWICH TRANSITION (ORW.DREEM2):
WIPOR TRANSITION (WIPOR.DREEM2):

LANDING BVY ALL RWYS, BED RWY 23 & 29: From DREEM on track 062° to WANLA , then on track 063° to ZELKA, then on track 076° to RIKAH, then on track 097° to EXXRO, then on track 097°. Expect radar vectors to destination airport and final approach course.

LANDING BED RWY 11: From DREEM on track 062° to WANLA, then on track 063° to ZELKA. Expect ILS approach.

LANDING LWM ALL RWYS: From DREEM on track 062° to WANLA, then on track 063° to ZELKA, then on track 076° to RIKAH, then on track 076°, expect radar vectors to final approach course.

DREEM TWO ARRIVAL (RNAV)

BEDFORD, MASSACHUSETTS

(GRAYM.GRAYM6) 18312
GRAYM SIX ARRIVAL

AL-626 (FAA)

BEDFORD, MASSACHUSETTS

LAURENCE G HANSCOM FIELD ATIS
 124.6
 BEVERLY RGNL ATIS
 119.2
 LAWRENCE MUNI ATIS
 126.75
 BOSTON APP CON
 124.4 279.6
 BRADLEY APP CON
 119.0 327.1

GARDNER
 110.6 GDM
 Chan 43

LAWRENCE
 MUNI

FITCHBURG
 MUNI

BEVERLY
 RGNL

LAURENCE G
 HANSCOM FIELD

DREEM
 N42°21.71'
 W71°44.57'

RNAV Equipped Aircraft: Proceed
 direct destination. Expect RADAR
 vectors to approach course.
 Non-RNAV Equipped Aircraft:
 Expect RADAR vectors to
 approach course.

GRAYM
 N42°06.07'
 W72°01.89'

GASSE
 N42°15.77'
 W71°51.29'
 Expect 5000

DVANY
 N41°51.74'
 W72°18.19'
 Expect 11000

HARTFORD
 114.9 HFD
 Chan 96
 N41°38.47'-W72°32.85'

PAISN
 N41°50.38'
 W72°07.04'

BLATT
 N41°49.62'
 W72°00.92'
 Expect 11000

PROVIDENCE
 115.6 PVD
 Chan 103

WIPOR
 N41°39.38'
 W72°10.63'

MOGUL
 N41°43.38'
 W72°00.55'

NORWICH
 110.0 ORW
 Chan 37
 N41°33.38'-W71°59.96'
 L-33-34, H-10-12

NOTE: RADAR required.
 NOTE: STAR applicable to aircraft
 requesting 11000 and above.
 NOTE: ATC may assign STAR to aircraft
 at and below 10000.

NOTE: Chart not to scale.

ARRIVAL ROUTE DESCRIPTION

HARTFORD TRANSITION (HFD.GRAYM6): From over HFD VOR/DME on HFD
 R-053 to GRAYM. Thence. . .

NORWICH TRANSITION (ORW.GRAYM6): From over ORW VOR/DME on ORW
 R-011 to GRAYM. Thence. . .

. . . From over GRAYM on HFD R-053 to GASSE, then to DREEM, at DREEM:

RNAV EQUIPPED AIRCRAFT: Proceed direct destination expect radar vectors to
 approach course.

NON-RNAV EQUIPPED AIRCRAFT: Expect radar vectors to approach course.

GRAYM SIX ARRIVAL
 (GRAYM.GRAYM6) 08NOV18

BEDFORD, MASSACHUSETTS

NE-1, 06 DEC 2018 to 03 JAN 2019

NE-1, 06 DEC 2018 to 03 JAN 2019

ZELKA TWO ARRIVAL (RNAV)
 (ZELKA.ZELKA2) 07DEC17

(ZELKA.ZELKA2) 17341
 ZELKA TWO ARRIVAL (RNAV)

AL-626 (FAA)

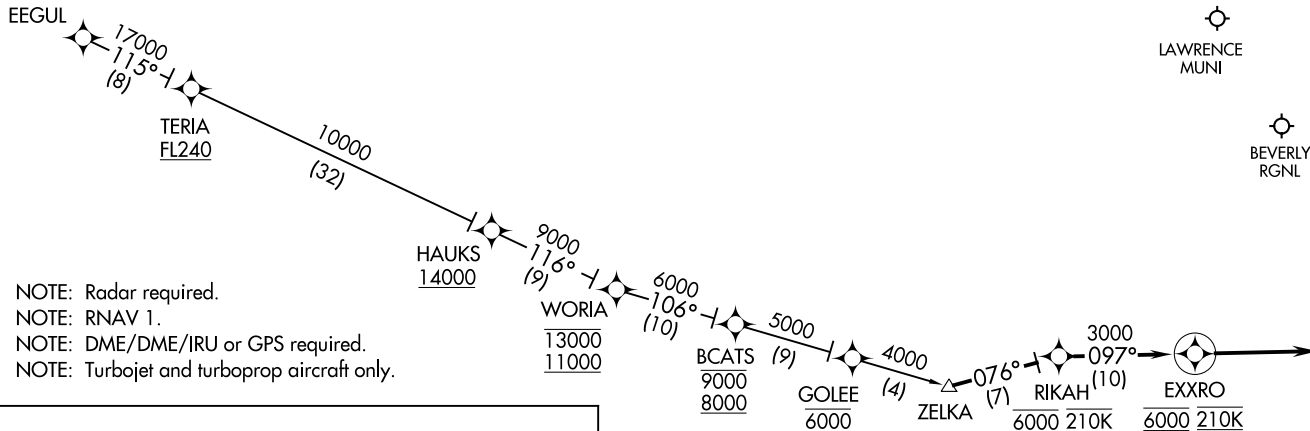
BEDFORD, MASSACHUSETTS

BOSTON APP CON 124.4 279.6
 LAURENCE G HANSCOM FIELD ATIS 124.6
 BEVERLY RGNL ATIS 119.2
 LAWRENCE MUNI ATIS 126.75


 LAWRENCE MUNI


 BEVERLY RGNL


 LAURENCE G HANSCOM FIELD



NOTE: Radar required.
 NOTE: RNAV 1.
 NOTE: DME/DME/IRU or GPS required.
 NOTE: Turbojet and turboprop aircraft only.

ARRIVAL ROUTE DESCRIPTION

EEGUL TRANSITION (EEGUL.ZELKA2):

From ZELKA on track 076° to cross RIKAH at 6000 and 210K, then on track 097° to cross EXXRO at 6000 and at 210K, then on track 097°. Expect radar vectors to destination airport and final approach course.

NOTE: Chart not to scale.

BEDFORD, MASSACHUSETTS