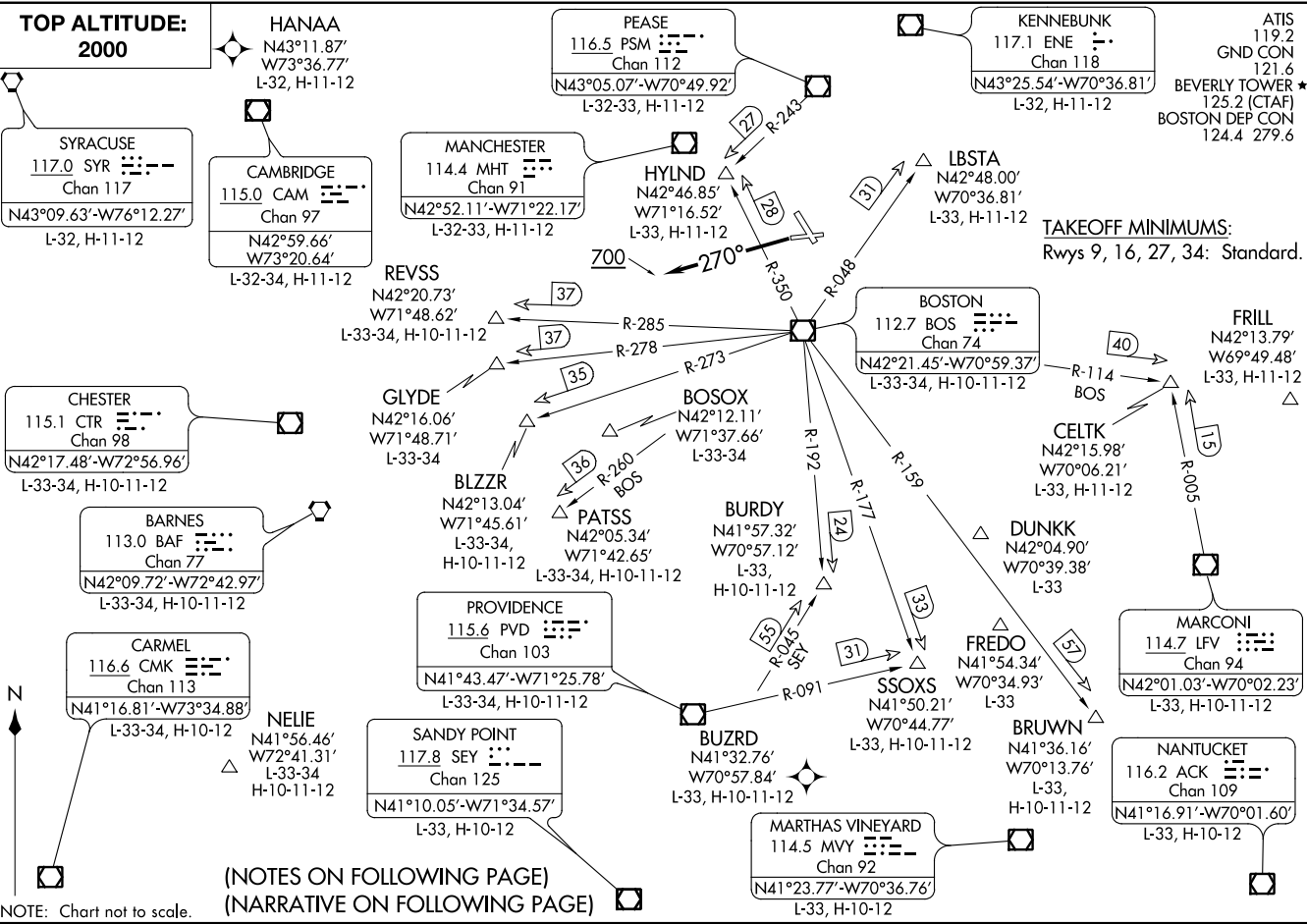


BEVERLY ONE DEPARTURE
(BVM1 .BVM) 02MAR17

BEVERLY ONE DEPARTURE
(BVM1 .BVM) 18144

AL-5039 (FAA)

BEVERLY RGNL (BVM1)
BEVERLY, MASSACHUSETTS





DEPARTURE ROUTE DESCRIPTION

TAKEOFF RUNWAYS 9, 16, 34: Climb heading as assigned by ATC, thence . . .

TAKEOFF RUNWAY 27: Climb heading 270° to 700, then as assigned by ATC, thence . . .

. . . expect RADAR vectors to assigned route/navaid/fix. Maintain 2000. Expect clearance to filed altitude/flight level within ten (10) minutes after departure.

NOTE: RADAR required.

NOTE: Non RNAV equipped aircraft can expect vectors on assigned route.

NOTE: BLZZR departures expect vectors on BOS R-273, DME required.

NOTE: BRUWN departures expect vectors on BOS R-159, DME required.

NOTE: CELTK departures expect vectors on BOS R-114.

NOTE: HYLND departures expect vectors on BOS R-350.

NOTE: PATSS departures expect vectors on BOS R-260, DME required.

NOTE: REVSS departures expect vectors on BOS R-285, DME required.

NOTE: SSOXS departures expect vectors on BOS R-177.

NE-1, 11 OCT 2018 to 08 NOV 2018

NE-1, 11 OCT 2018 to 08 NOV 2018