

LOC/DME I-BVX 109.7 Chan 34	APP CRS 079°	Rwy ldg TDZE Apt Elev	6002 463 465
---	------------------------	-----------------------------	---

LOC RWY 8

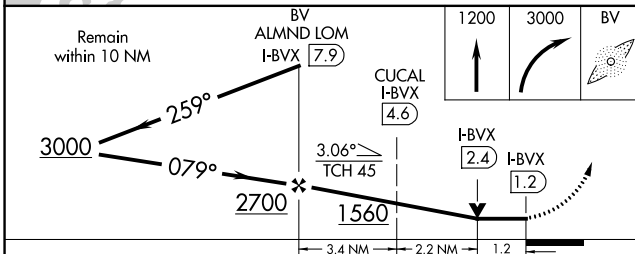
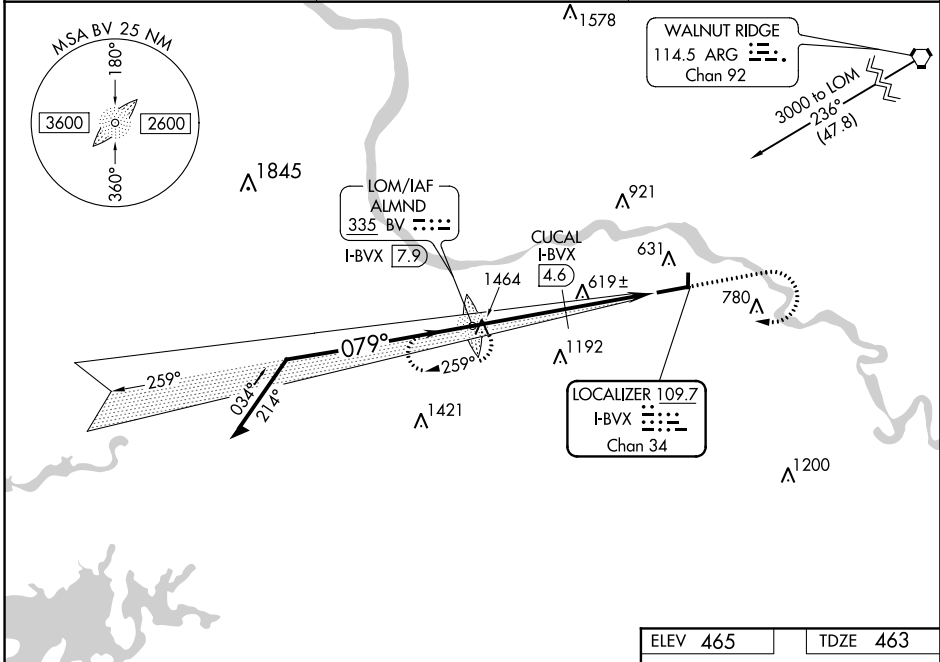
BATESVILLE RGNL (BVX)

ADF required for procedure entry.
ADF required.

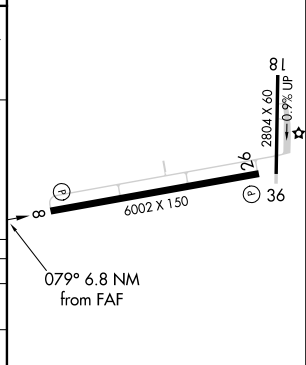
NA Circling NA N of Rwy 8-26.

MISSED APPROACH: Climb to 1200 then climbing right turn to 3000 direct ALMND LOM/7.9 DME and hold.

AWOS-3PT 126.375	MEMPHIS CENTER 126.85 281.55	UNICOM 122.8 (CTAF)
----------------------------	--	-------------------------------



ELEV 465	TDZE 463
----------	----------



CATEGORY	A	B	C	D
S-8	1560-1¼ 1097 (1100-1¼)	1560-1½ 1097 (1100-1½)	1560-3	1097 (1100-3)
CIRCLING	1560-1¼ 1095 (1100-1¼)	1560-1½ 1095 (1100-1½)	1560-3	1095 (1100-3)
CUCAL FIX MINIMUMS (DME REQUIRED)				
S-8	880-1	417 (500-1)	880-1¼	417 (500-1¼)
CIRCLING	980-1	515 (600-1)	980-1½	515 (600-1½)
			1040-2	575 (600-2)

REIL Rwys 8 and 26	
MIRL Rwy 8-26	
FAF to MAP 6.8 NM	
Knots	60 90 120 150 180
Min:Sec	6:48 4:32 3:24 2:43 2:16

SC-1, 05 DEC 2019 to 02 JAN 2020

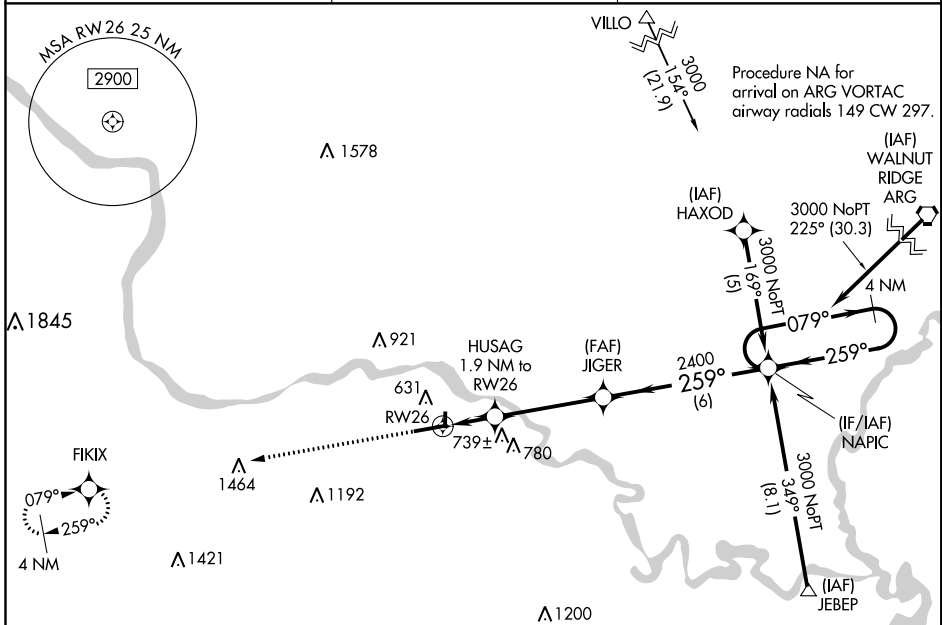
SC-1, 05 DEC 2019 to 02 JAN 2020

RNAV (GPS) RWY 26

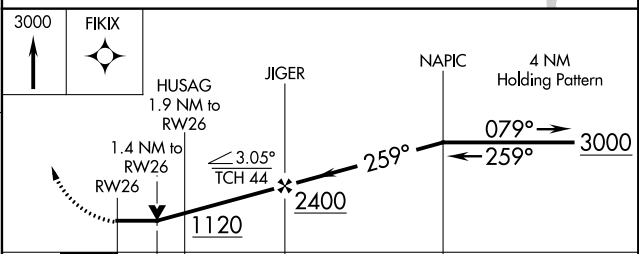
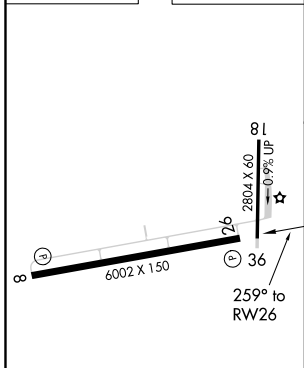
BATESVILLE RGNL (BVX)

APP CRS	Rwy Idg	6002
259°	TDZE	465
	Apt Elev	465

RNP APCH.		MISSED APPROACH: Climb to 3000 direct FKIX and hold.
<p>▽ Circling NA N of Rwy 8-26. ▲ Rwy 26 helicopter visibility reduction below 3/4 SM NA.</p>		
AWOS-3PT	MEMPHIS CENTER	UNICOM
126.375	126.85 281.55	122.8 (CTAF) 0



ELEV 465	TDZE 465
-----------------	-----------------



CATEGORY	A	B	C	D
LNAV MDA	940-1	475 (500-1)	940-1 3/8 475 (500-1 3/8)	940-1 1/2 475 (500-1 1/2)
CIRCLING	980-1	515 (600-1)	980-1 1/2 515 (600-1 1/2)	1040-2 575 (600-2)

REIL Rwy 8 and 26 **0**
 MIRL Rwy 8-26 **0**

BATESVILLE, ARKANSAS
 Amdt 1B 03JAN19

35°44'N-91°39'W

RNAV (GPS) RWY 26

SC-1, 05 DEC 2019 to 02 JAN 2020

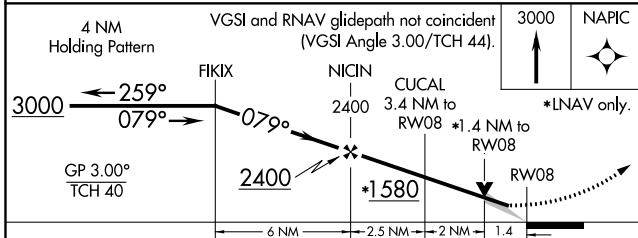
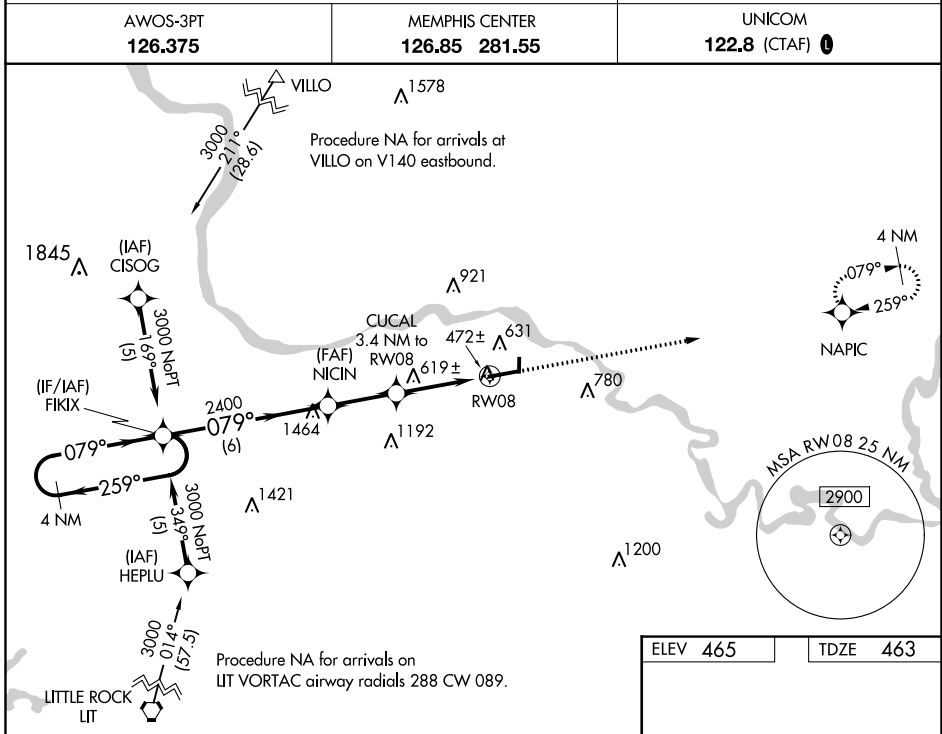
SC-1, 05 DEC 2019 to 02 JAN 2020

WAAS CH 97717 W08A	APP CRS 079°	Rwy Idg TDZE Apt Elev	6002 463 465
--	------------------------	-----------------------------	---

RNAV (GPS) RWY 8

BATESVILLE RGNL (BVX)

RNP APCH.	<p>⚠ Circling NA N of Rwy 8-26. For uncompensated Baro-VNAV systems, LNAV/VNAV NA below -15°C or above 54°C.</p>	<p>MISSED APPROACH: Climb to 3000 direct NAPIC and hold</p>
AWOS-3PT 126.375		



ELEV 465	TDZE 463
<p>REIL Rwys 8 and 26 0</p> <p>MIRL Rwy 8-26 0</p>	

CATEGORY	A	B	C	D
LPV DA	713-1 250 (300-1)			
LNAV/VNAV DA	802-1¼ 339 (400-1¼)			
LNAV MDA	940-1 477 (500-1)	940-1⅜ 477 (500-1⅜)	940-1½ 477 (500-1½)	
CIRCLING	980-1 515 (600-1)	980-1½ 515 (600-1½)	1040-2 575 (600-2)	

SC-1, 05 DEC 2019 to 02 JAN 2020

SC-1, 05 DEC 2019 to 02 JAN 2020