

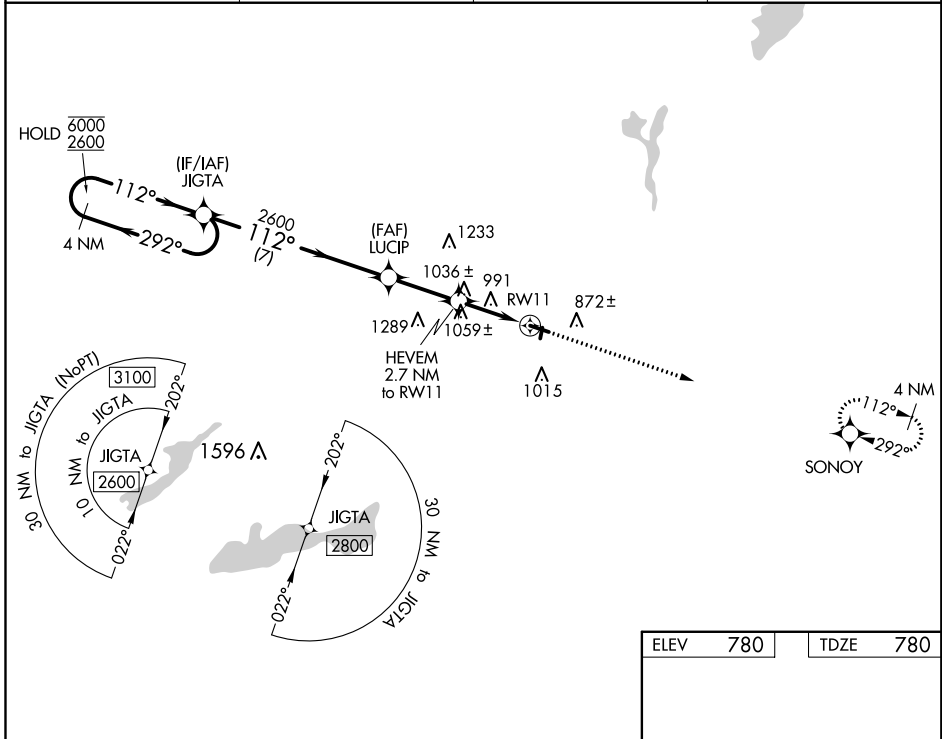
WAAS CH 90134 W11A	APP CRS 112°	Rwy Idg 4300 TDZE 780 Apt Elev 780
--	------------------------	---

RNAV (GPS) RWY 11

BURLINGTON MUNI (BUU)

RNP APCH - GPS.	MISSED APPROACH: Climb to 2500 direct SONOY and hold.
<p>▼ Circling NA to Rwy 1 and 19.</p> <p>▲ Rwy 11 helicopter visibility reduction below 3/4 SM NA.</p>	

AWOS-3 125.275	MILWAUKEE APP CON 135.875 307.0	GCO 121.725	UNICOM 123.05 (CTAF) 0
--------------------------	---	-----------------------	----------------------------------



EC-3, 27 JAN 2022 to 24 FEB 2022

EC-3, 27 JAN 2022 to 24 FEB 2022

ELEV 780		TDZE 780		
4 NM Holding Pattern JIGTA		Visual Segment - Obstacles.		
6000 ← 292°		2500 SONOY		
2600 → 112°		112° to RW11		
2600		HEVEM 2.7 NM to RW11		
1660		1.3 NM to RW11		
RW11		4300 X 75		
7 NM		2410 X 120		
2.7 NM		1		
1.4 NM		61		
1.3 NM		29		
CATEGORY	A	B	C	D
LP MDA	1300-1	520 (600-1)	1300-1 3/8	520 (600-1 3/8)
LNNAV MDA	1320-1	540 (600-1)	1320-1 1/2	540 (600-1 1/2)
☐ CIRCLING	1320-1 540 (600-1)	1380-1 600 (600-1)	1380-1 1/2 600 (600-1 1/2)	1560-2 1/2 780 (800-2 1/2)
MIRL Rwy 11-29 0				
REIL Rwy 11 and 29 0				

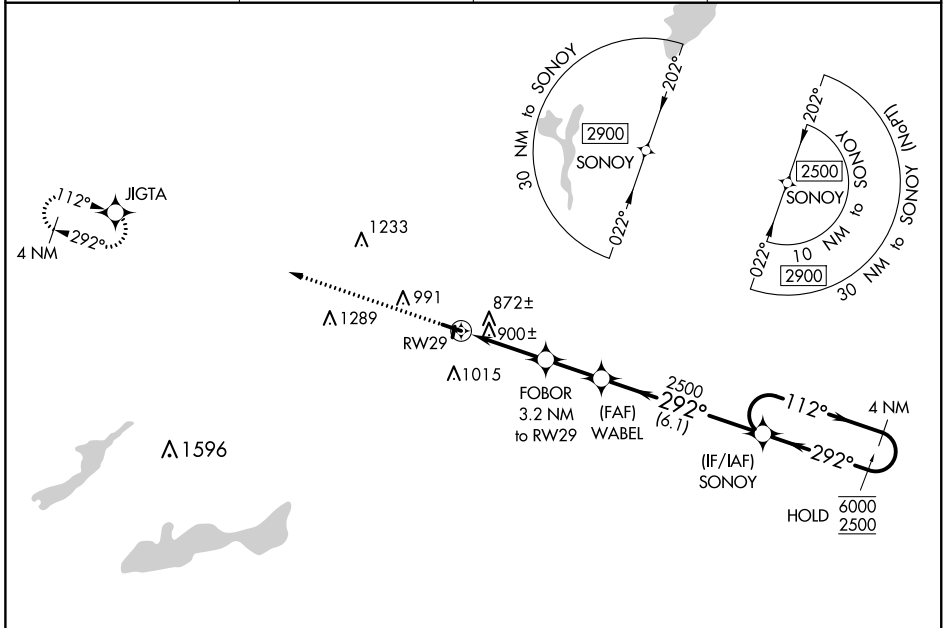
WAAS CH 82732 W29A	APP CRS 292°	Rwy Idg TDZE Apt Elev	4300 780 780
--	------------------------	-----------------------------	---

RNAV (GPS) RWY 29

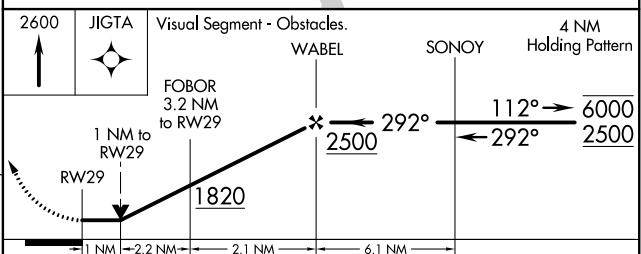
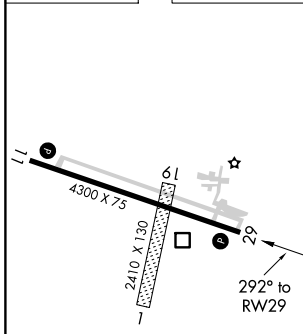
BURLINGTON MUNI (BUU)

RNP APCH - GPS.		MISSED APPROACH: Climb to 2600 direct JIGTA and hold.	
<p>▼ Circling NA to Rws 1 and 19.</p> <p>▲ Rwy 29 helicopter visibility reduction below 3/4 SM NA.</p>			

AWOS-3 125.275	MILWAUKEE APP CON 135.875 307.0	GCO 121.725	UNICOM 123.05 (CTAF) 0
--------------------------	---	-----------------------	----------------------------------



ELEV 780	TDZE 780
----------	----------



CATEGORY	A		B		C		D	
LP MDA	1160-1				380 (400-1)			
LNAV MDA	1280-1		500 (500-1)		1280-1 3/8		500 (500-1 3/8)	
CIRCLING	1300-1 520 (600-1)		1380-1 600 (600-1)		1380-1 1/2 600 (600-1 1/2)		1560-2 1/2 780 (800-2 1/2)	

EC-3, 27 JAN 2022 to 24 FEB 2022

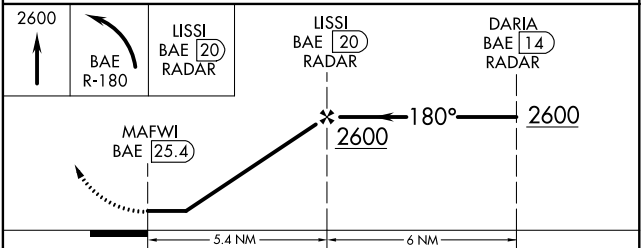
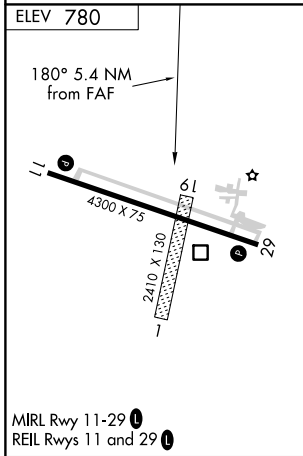
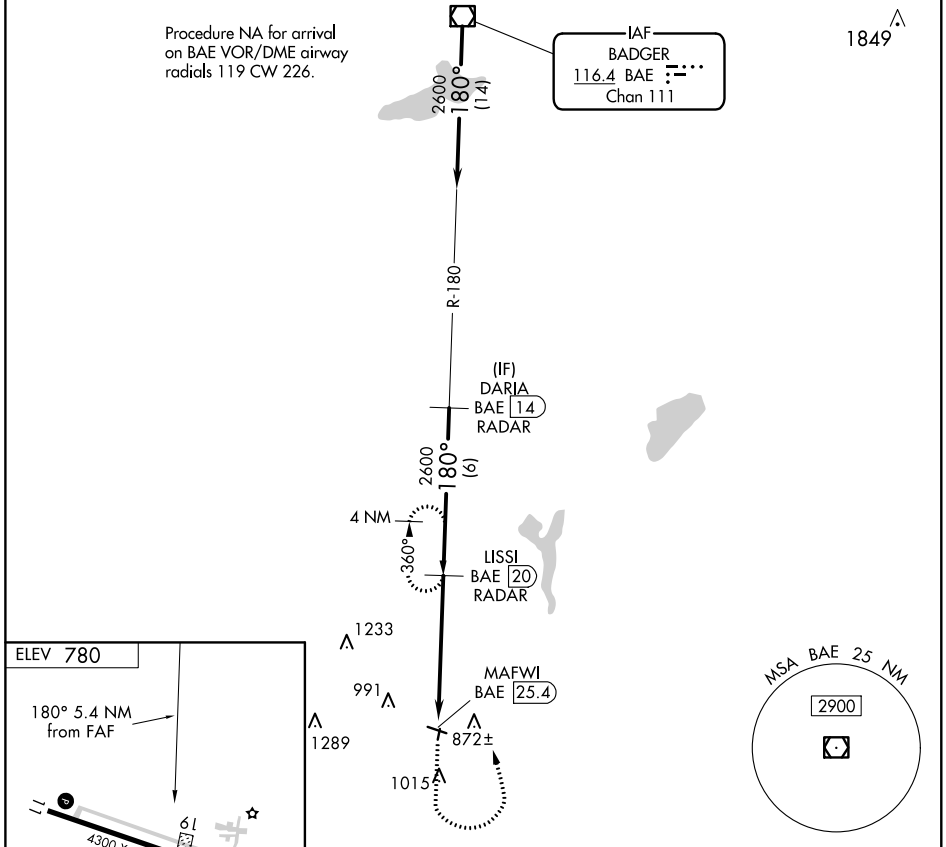
EC-3, 27 JAN 2022 to 24 FEB 2022

VOR/DME BAE 116.4 Chan 111	APP CRS 180°	Rwy Idg TDZE Apt Elev	N/A N/A 780
--	------------------------	-----------------------------	--

VOR-A

BURLINGTON MUNI (BUU)

DME or RADAR required.		MISSED APPROACH: Climb to 2600 then left turn on BAE VOR/DME R-180 to LISSI/20 DME/RADAR and hold.	
Circling NA to Rwy 1 and 19.		AWOS-3 125.275	MILWAUKEE APP CON 135.875 307.0
		GCO 121.725	UNICOM 123.05 (CTAF)



FAF to MAP 5.4 NM					
Knots	60	90	120	150	180
Min:Sec	5:24	3:36	2:42	2:10	1:48

CATEGORY	A	B	C	D
CIRCLING	1400-1	620 (700-1)	1400-1 ³ / ₄ 620 (700-1 ³ / ₄)	1560-2 ¹ / ₂ 780 (800-2 ¹ / ₂)

EC-3, 27 JAN 2022 to 24 FEB 2022

EC-3, 27 JAN 2022 to 24 FEB 2022