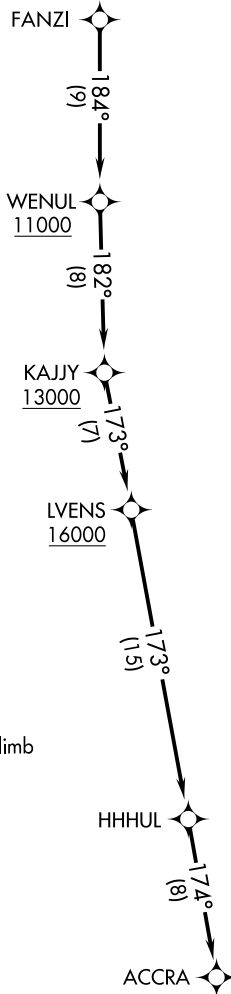


AWOS-3
125.275
MILWAUKEE DEP CON
135.875 307.0

**TOP ALTITUDE:
ASSIGNED BY ATC**



TAKEOFF MINIMUMS

Rwys 1, 19: NA - Environmental.
Rwy 11: Standard.
Rwy 29: 300-1 or standard with minimum climb of 325' per NM to 1000.

- NOTE: RNAV 1.
- NOTE: GPS or DME/DME/IRU required.
- NOTE: RADAR required.
- NOTE: Turbojet aircraft maintain 250K until advised by ATC.
- NOTE: Advise ATC if unable to comply with crossing restrictions.

NOTE: Chart not to scale.



DEPARTURE ROUTE DESCRIPTION

Climb on assigned heading for RADAR vectors to FANZI, thence. . . .
. . . .on track 184° to cross WENUL at or above 11000, then on track 182° to cross KAJJY at or above 13000, then on track 173° to cross LVENS at or above 16000, then on track 173° to HHHUL, then on track 174° to ACCRA. Maintain ATC assigned altitude, expect filed altitude ten minutes after departure.

(UECKR5.UECKR) 19171

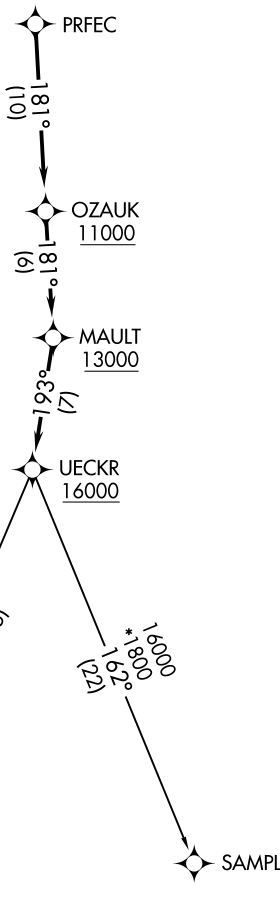
UECKR FIVE DEPARTURE (RNAV)

AL-5901 (FAA)

BURLINGTON MUNI (BTJ)
BURLINGTON, WISCONSIN

AWOS-3
125.275
MILWAUKEE DEP CON
135.875 307.0

**TOP ALTITUDE:
ASSIGNED BY ATC**



TAKEOFF MINIMUMS

Rwys 1, 19: NA - Environmental.
Rwy 11: Standard.
Rwy 29: 300-1 or standard with a minimum climb of 325' per NM to 1000.

- NOTE: RNAV 1.
- NOTE: GPS or DME/DME/IRU required.
- NOTE: RADAR required.
- NOTE: Turbojet aircraft maintain 250K until advised by ATC.
- NOTE: Notify ATC if unable to comply with crossing restrictions.

NOTE: Chart not to scale.

DEPARTURE ROUTE DESCRIPTION

Climb on assigned heading for RADAR vectors to PRFEC, thence. . . .
. . . .on track 181° to cross OZAUK at or above 11000, then on track 181° to cross MAULT at or above 13000, then on track 193° to cross UECKR at or above 16000, then on (transition).
Maintain ATC assigned altitude, expect filed altitude ten minutes after departure.

DELHI TRANSITION (UECKR5.DELHI)
SAMPL TRANSITION (UECKR5.SAMPL)

UECKR FIVE DEPARTURE (RNAV)
(UECKR5.UECKR) 13SEP18

BURLINGTON, WISCONSIN
BURLINGTON MUNI (BTJ)

EC-3, 30 JAN 2020 to 27 FEB 2020

EC-3, 30 JAN 2020 to 27 FEB 2020