

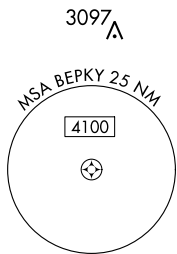
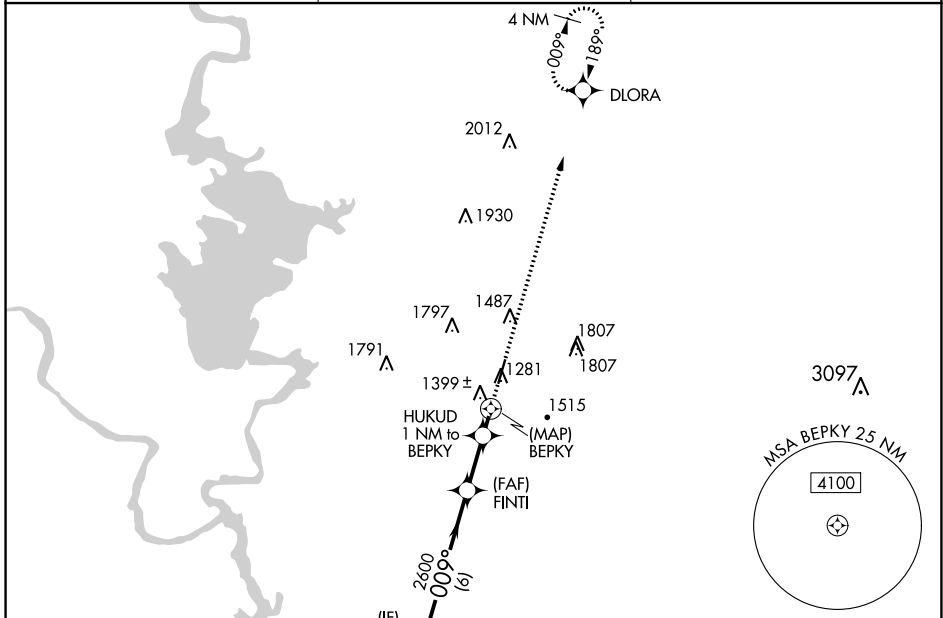
# RNAV (GPS) RWY 1

BURNET MUNI KATE CRADDOCK FIELD (BMQ)

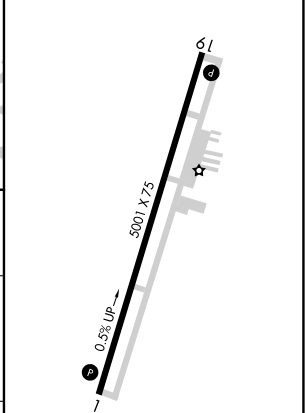
APP CRS <b>009°</b>	Rwy Idg TDZE Apt Elev	<b>5001</b> <b>1270</b> <b>1284</b>
------------------------	-----------------------------	-------------------------------------------

RNP APCH.	MISSED APPROACH: Climb to 3500 direct DLORA and hold.
<p>▼ Rwy 1 helicopter visibility reduction below 3/4 SM NA.</p> <p>▲ When local altimeter setting not received, use Lago Vista altimeter setting and increase all MDA 60 feet.</p>	

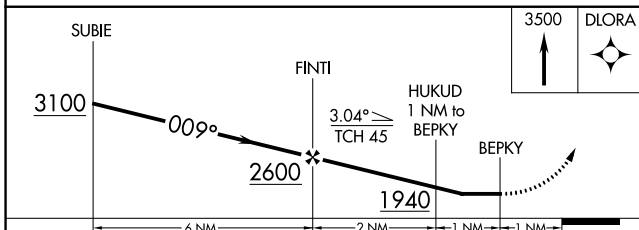
ASOS <b>119.925</b>	HOUSTON CENTER <b>132.35 317.5</b>	UNICOM <b>122.8 (CTAF) 0</b>
------------------------	---------------------------------------	---------------------------------



ELEV 1284	TDZE 1270
-----------	-----------



Procedure NA for arrivals at AMUSE on V565 southeast bound and V163 southbound.



CATEGORY	A	B	C	D	
LNAV MDA	1660-1 1/4			390 (400-1 1/4)	NA

REIL Rwys 1 and 19 0  
MIRL Rwy 1-19 0

SC-3, 03 DEC 2020 to 31 DEC 2020

SC-3, 03 DEC 2020 to 31 DEC 2020

APP CRS <b>189°</b>	Rwy Idg <b>5001</b>
TDZE <b>1284</b>	
Apt Elev <b>1284</b>	

# RNAV (GPS) RWY 19

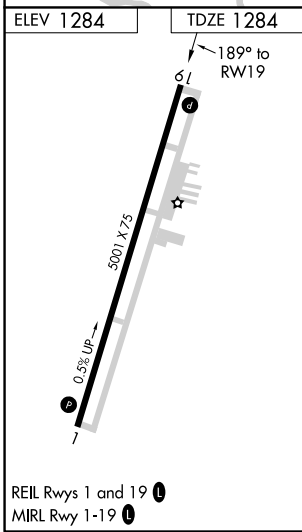
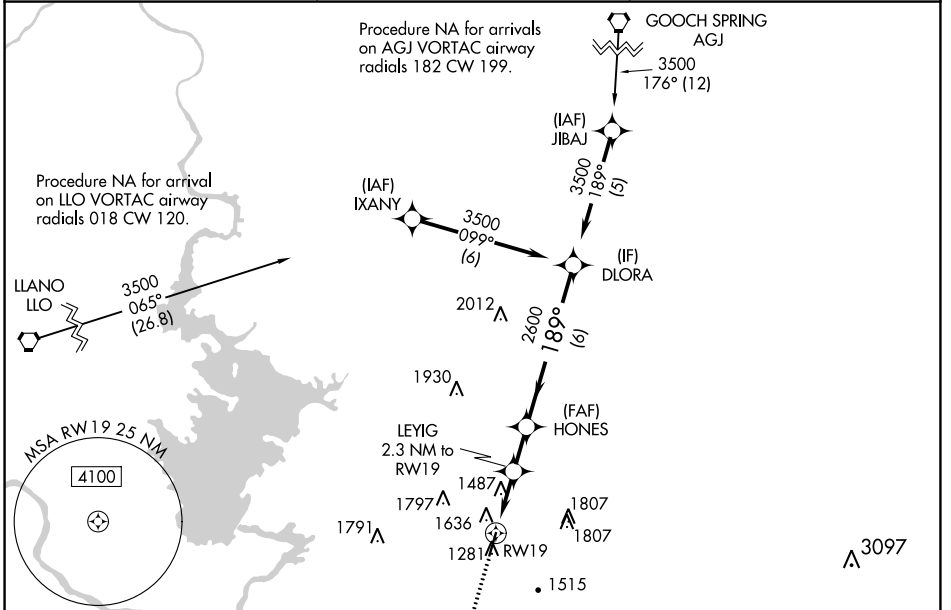
BURNET MUNI KATE CRADDOCK FIELD (BMQ)

RNP APCH.

⚠ When local altimeter setting not received, use Lago Vista altimeter setting and increase all MDA 60 feet and increase LNAV Cats A/B/C visibilities ¼ SM. Procedure NA at night. Rwy 19 helicopter visibility reduction below 1 SM NA.

MISSED APPROACH: Climb to 3100 direct FINTI then via track 180° to AMUSE.

ASOS <b>119.925</b>	HOUSTON CENTER <b>132.35 317.5</b>	UNICOM <b>122.8 (CTAF) 0</b>
------------------------	---------------------------------------	---------------------------------



3100	FINTI	AMUSE		
↑	✧	△		
	tr 180°			
			HONES	DLORA
			2600	3500
			2060	
			2.3 NM	1.7 NM
			6 NM	
CATEGORY	A	B	C	D
LNAV MDA	1940-1	656 (700-1)	1940-1¾ 656 (700-1¾)	NA

BURNET, TEXAS  
Orig-C 21MAY20

BURNET MUNI KATE CRADDOCK FIELD (BMQ)  
30°44'N-98°14'W  
**RNAV (GPS) RWY 19**

SC-3, 03 DEC 2020 to 31 DEC 2020

SC-3, 03 DEC 2020 to 31 DEC 2020