

LOC/DME I-BKX 111.35 Chan 50(Y)	APP CRS 116°	Rwy Idg 6000 TDZE 1621 Apt Elev 1648
--	------------------------	---

ILS or LOC RWY 12

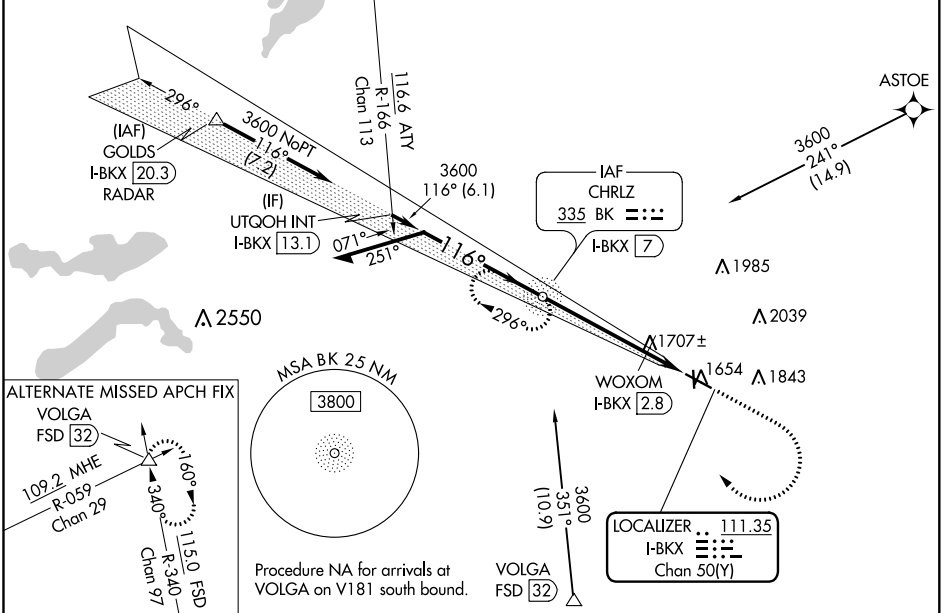
BROOKINGS RGNL (BKK)

ADF required. From ASTOE: RNAV 1-GPS required.

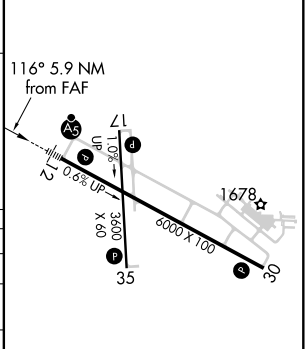
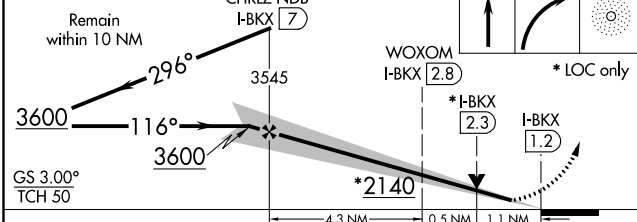
MALSR
MISSED APPROACH: Climb to 2100 then climbing right turn to 3600 direct BK NDB and hold, continue climb-in hold to 3600.

NA Circling Rwy 17 NA at night. For inop ALS, increase S-LOC 12 Cats C/D visibility to 1 3/8 SM. For inop ALS when using WOXOM fix minimums, increase S-LOC 12 Cat C/D visibility to 1 SM.

AWOS-3PT 119.925	MINNEAPOLIS CENTER 132.05 317.4	GCO 121.725	UNICOM 123.0 (CTAF)
----------------------------	---	-----------------------	-------------------------------



BK CHR LZ NDB I-BKX [7]	ELEV 1648	TDZE 1621
-------------------------	-----------	-----------



CATEGORY	A	B	C	D
S-ILS 12	1821-1/2 200 (200-1/2)			
S-LOC 12	2140-1/2	519 (500-1/2)	2140-1	519 (500-1)
C CIRCLING	2140-1 492 (500-1)	2160-1 512 (600-1)	2340-2 692 (700-2)	2340-2 1/4 692 (700-2 1/4)
WOXOM FIX MINIMUMS				
S-LOC 12	2000-1/2	379 (400-1/2)	2000-5/8	379 (400-5/8)
C CIRCLING	2140-1 492 (500-1)	2160-1 512 (600-1)	2340-2 692 (700-2)	2340-2 1/4 692 (700-2 1/4)

HIRL Rwy 12-30
MIRL Rwy 17-35
REIL Rws 17, 30, and 35

FAF to MAP 5.9 NM

Knots	60	90	120	150	180
Min:Sec	5:54	3:56	2:57	2:22	1:58

NC-1, 02 DEC 2021 to 30 DEC 2021

NC-1, 02 DEC 2021 to 30 DEC 2021

WAAS CH 73036 W12A	APP CRS 115°	Rwy Idg TDZE Apt Elev	6000 1621 1648
--	------------------------	-----------------------------	---

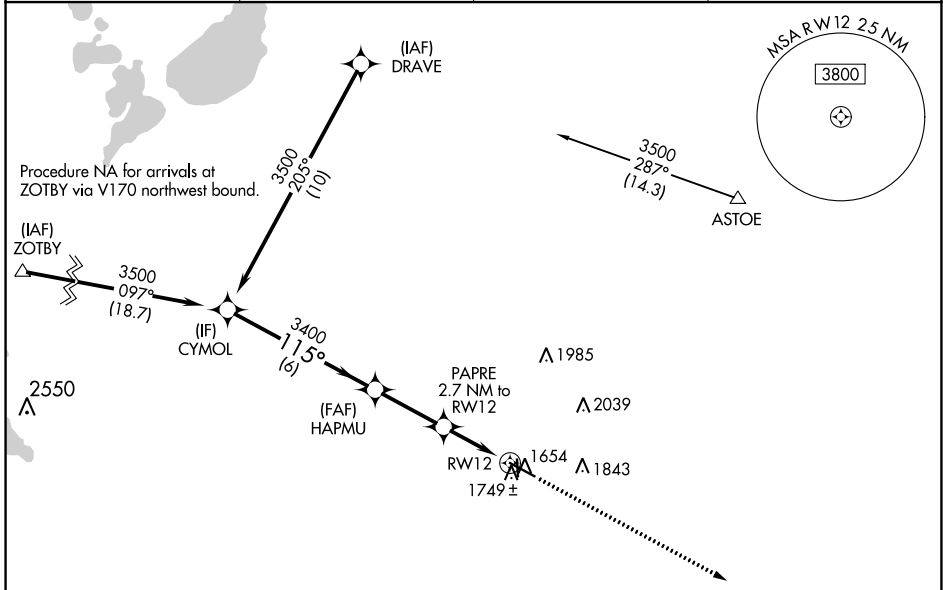
RNAV (GPS) RWY 12

BROOKINGS RGNL (BKK)

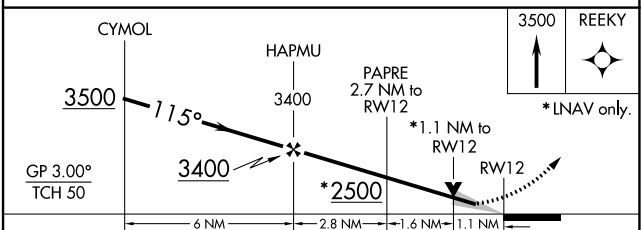
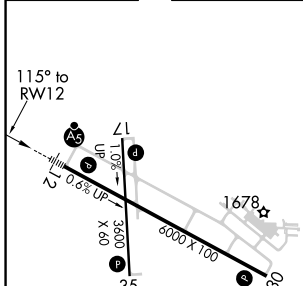
⚠ For uncompensated Baro-VNAV systems, LNAV/VNAV NA below -18°C (0°F) or above 54°C (130°F). DME/DME RNP-0.3 NA. When local altimeter setting not received, use Pipestone altimeter setting and increase all DA 81 feet and all MDA 100 feet; increase LNAV/VNAV all Cats visibility ¼ mile; LNAV Cats C and D visibility ⅜ mile; Circling Cats C and D visibility ¼ mile. Baro-VNAV and VDP NA when using Pipestone altimeter setting. Night landing Rwy 17 NA.

MALSR
 MISSED APPROACH: Climb to 3500 direct REEKY and hold.

AWOS-3PT 119.925	MINNEAPOLIS CENTER 132.05 317.4	GCO 121.725	UNICOM 123.0 (CTAF)
----------------------------	---	-----------------------	-------------------------------



ELEV 1648	D	TDZE 1621
-----------	----------	-----------



CATEGORY	A	B	C	D
LPV DA		1821-½	200 (200-½)	
LNAV/VNAV DA		1948-⅝	327 (300-⅝)	
LNAV MDA	2000-½	379 (400-½)	2000-⅝	379 (400-⅝)
C CIRCLING	2140-1 492 (500-1)	2160-1 512 (600-1)	2340-2 692 (700-2)	2340-2¼ 692 (700-2¼)

HIRL Rwy 12-30
MIRL Rwy 17-35
REIL Rwy 17, 30 and 35

NC-1, 02 DEC 2021 to 30 DEC 2021

NC-1, 02 DEC 2021 to 30 DEC 2021

WAAS CH 82736 W30A	APP CRS 296°	Rwy Idg TDZE Apt Elev	6000 1637 1648
--	------------------------	-----------------------------	---

RNAV (GPS) RWY 30

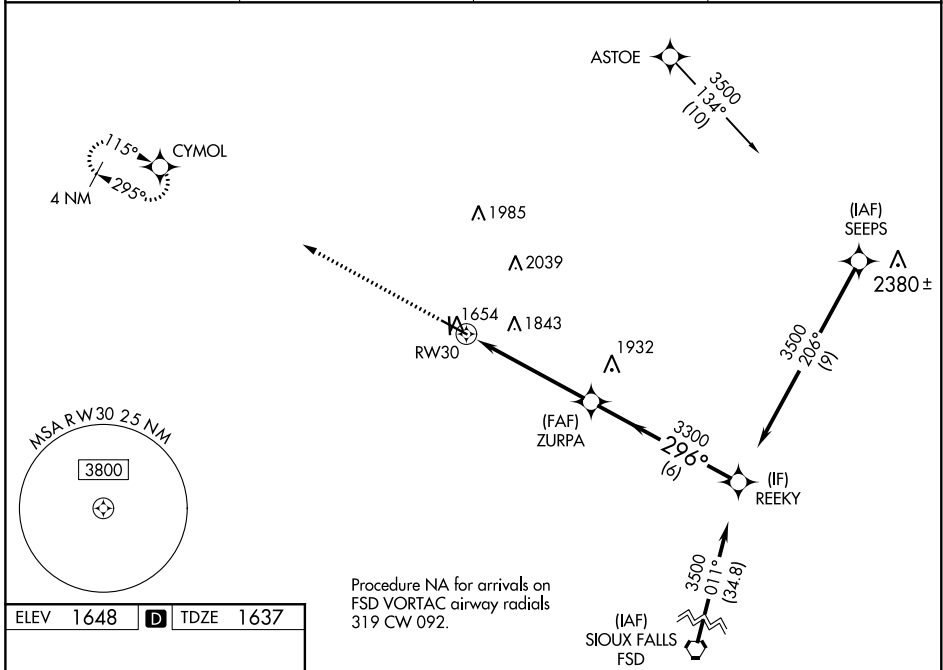
BROOKINGS RGNL (BKK)

RNP APCH.

▼ Circling Rwy 17 NA at night. For uncompensated Baro-VNAV systems, LNAV/VNAV NA below -18°C or above 54°C.
▲ Rwy 30 helicopter visibility reduction below 1 SM NA.

MISSED APPROACH: Climb to 3500 direct CYMOL and hold.

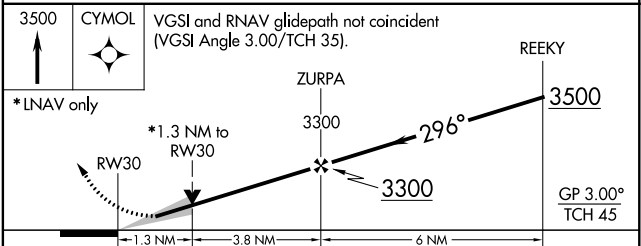
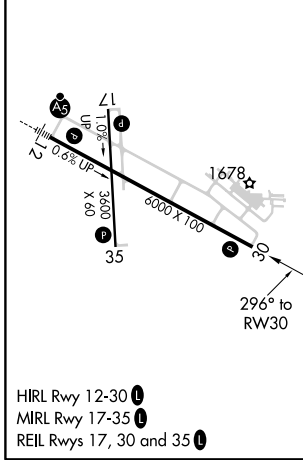
AWOS-3PT 119.925	MINNEAPOLIS CENTER 132.05 317.4	GCO 121.725	UNICOM 123.0 (CTAF) 0
----------------------------	---	-----------------------	---------------------------------



NC-1, 02 DEC 2021 to 30 DEC 2021

NC-1, 02 DEC 2021 to 30 DEC 2021

ELEV 1648	D	TDZE 1637
-----------	----------	-----------



CATEGORY	A	B	C	D
LPV DA		1887-1	250 (300-1)	
LNAV/VNAV DA		1968-1½	331 (400-1½)	
LNAV MDA	2080-1	443 (500-1)	2080-1¾	443 (500-1¾)
C CIRCLING	2140-1 492 (500-1)	2160-1 512 (600-1)	2340-2 692 (700-2)	2340-2¼ 692 (700-2¼)