

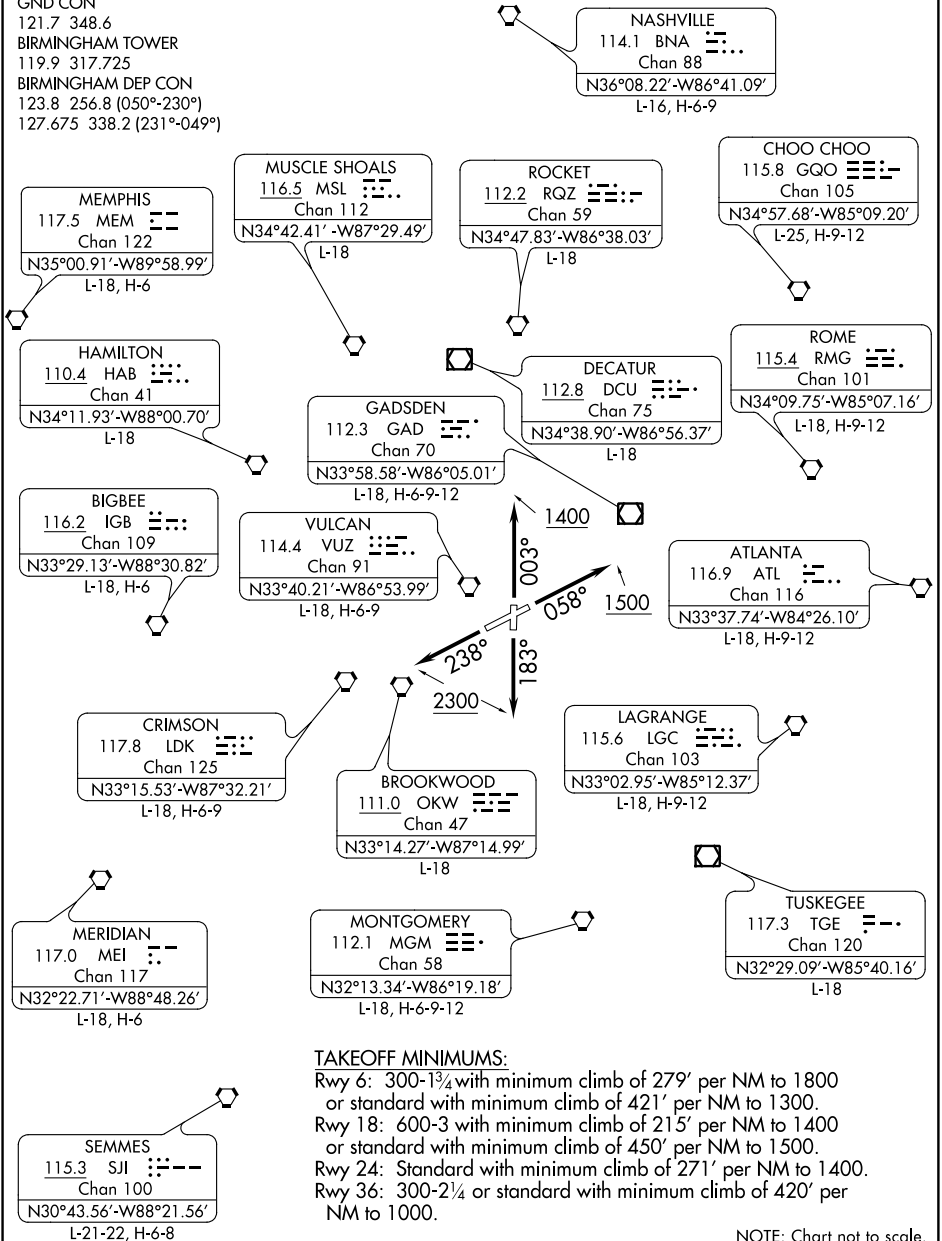
BIRMINGHAM SIX DEPARTURE

ATIS
119.4 270.1
CLNC DEL
125.675 305.2
GND CON
121.7 348.6
BIRMINGHAM TOWER
119.9 317.725
BIRMINGHAM DEP CON
123.8 256.8 (050°-230°)
127.675 338.2 (231°-049°)

(NARRATIVE ON FOLLOWING PAGE)

NOTE: Radar required.

**TOP ALTITUDE:
4000**



SE-4, 29 MAR 2018 to 26 APR 2018

SE-4, 29 MAR 2018 to 26 APR 2018

TAKEOFF MINIMUMS:

- Rwy 6: 300-1¾ with minimum climb of 279' per NM to 1800 or standard with minimum climb of 421' per NM to 1300.
- Rwy 18: 600-3 with minimum climb of 215' per NM to 1400 or standard with minimum climb of 450' per NM to 1500.
- Rwy 24: Standard with minimum climb of 271' per NM to 1400.
- Rwy 36: 300-2¼ or standard with minimum climb of 420' per NM to 1000.

NOTE: Chart not to scale.

BIRMINGHAM SIX DEPARTURE



DEPARTURE ROUTE DESCRIPTION

TAKEOFF RWY 6: Climb heading 058° to 1500, thence

TAKEOFF RWY 18: Climb heading 183° to 2300, thence

TAKEOFF RWY 24: Climb heading 238° to 2300, thence

TAKEOFF RWY 36: Climb heading 003° to 1400, thence

. . . . Expect vectors to filed route. Maintain 4000 or assigned lower altitude. Expect clearance to filed altitude ten minutes after departure.

SE-4, 29 MAR 2018 to 26 APR 2018

SE-4, 29 MAR 2018 to 26 APR 2018