

NDB BBB	APP CRS	Rwy Idg	4000
239	148°	TDZE	1039
		Apt Elev	1039

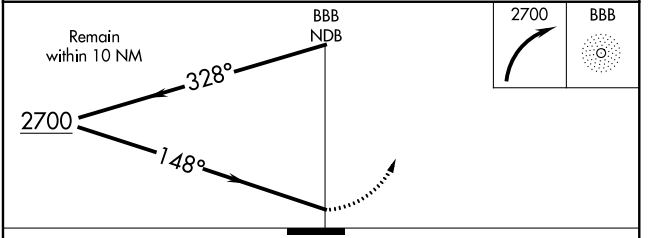
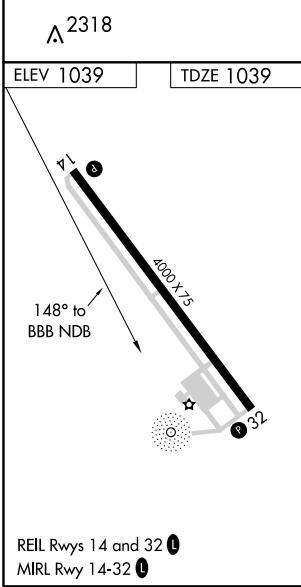
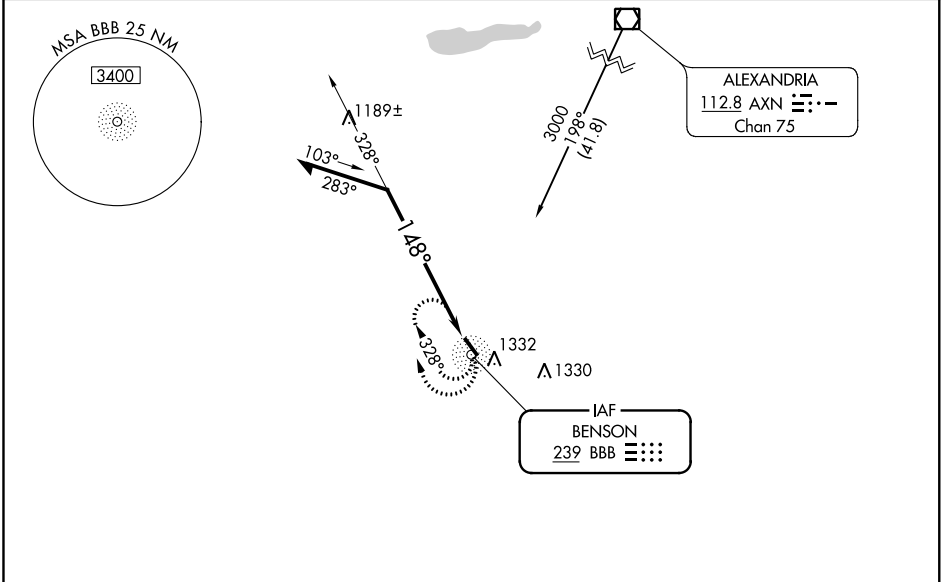
NDB RWY 14

BENSON MUNI (BBB)

NA If local altimeter setting not received, use Appleton altimeter setting and increase all MDAs 40 feet.

MISSED APPROACH: Climbing right turn to 2700 in BBB NDB holding pattern.

AWOS-3 118.45	MINNEAPOLIS CENTER 125.5 323.1	UNICOM 122.8 (CTAF)
-------------------------	--	-------------------------------



CATEGORY	A	B	C	D
S-14	1700-1	661 (700-1)	NA	
CIRCLING	1740-1	701 (800-1)	NA	

NC-1, 01 MAR 2018 to 29 MAR 2018

NC-1, 01 MAR 2018 to 29 MAR 2018

WAAS CH 49210 W14A	APP CRS 138°	Rwy Idg TDZE Apt Elev	4000 1039 1039
---------------------------------	------------------------	-----------------------------	---

RNAV (GPS) RWY 14

BENSON MUNI (BBB)

⚠ For uncompensated Baro-VNAV systems, LNAV/VNAV NA below -17°C (2°F) or above 54°C (130°F).
⚠ DME/DME RNP-0.3 NA.
 Baro-VNAV and VDP NA when using Appleton altimeter setting.
 When local altimeter setting not received, use Appleton altimeter setting and increase all DA and MDA 40 feet, increase Circling Cat B visibility ¼ mile.

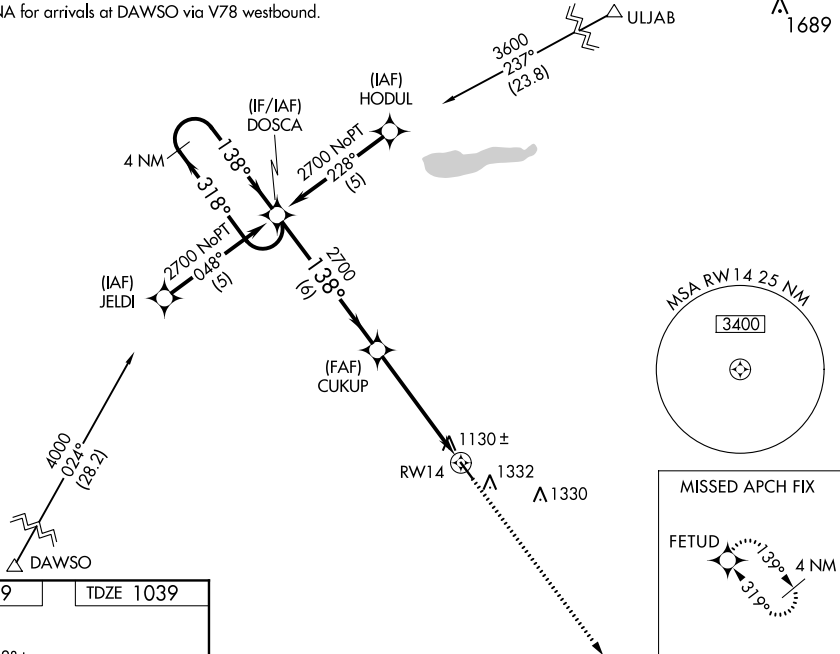
MISSED APPROACH: Climb to 2700 direct FETUD and hold.

AWOS-3
118.45

MINNEAPOLIS CENTER
125.5 323.1

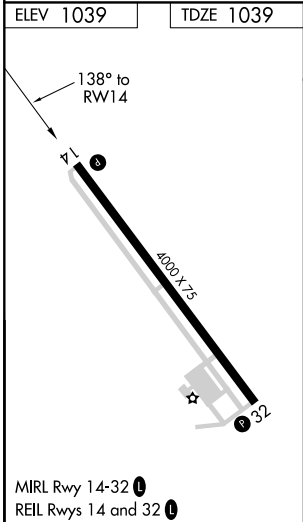
UNICOM
122.8 (CTAF) ①

Procedure NA for arrivals at DAWSO via V78 westbound.



NC-1, 01 MAR 2018 to 29 MAR 2018

NC-1, 01 MAR 2018 to 29 MAR 2018



	4 NM Holding Pattern DOSCA	CUKUP	2700	FETUD
	← 318° 2700 ——— 138° →	← 138° ————— 2700	* 1.5 NM to RWY 14	* LNAV only
	GP 3.00° TCH 40	————— 6 NM —————	————— 3.5 NM —————	————— 1.5 NM —————
CATEGORY	A	B	C	D
LPV DA	1382-1¼	343 (400-1¼)		NA
LNAV/VNAV DA	1426-1½	387 (400-1½)		NA
LNAV MDA	1540-1	501 (600-1)		NA
CIRCLING	1740-1	701 (800-1)		NA

WAAS CH 99710 W32A	APP CRS 319°	Rwy Idg TDZE Apt Elev	4000 1039 1039
--	------------------------	-----------------------------	---

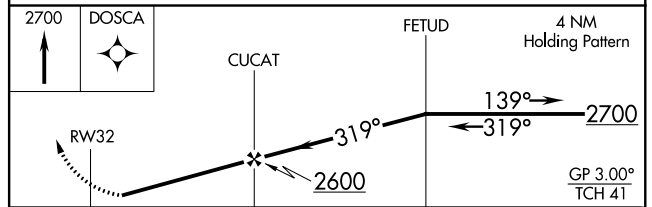
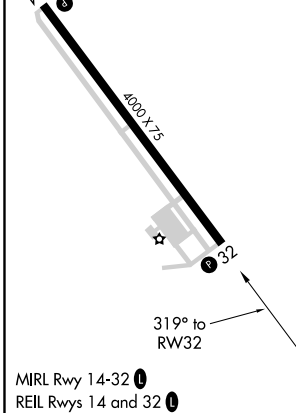
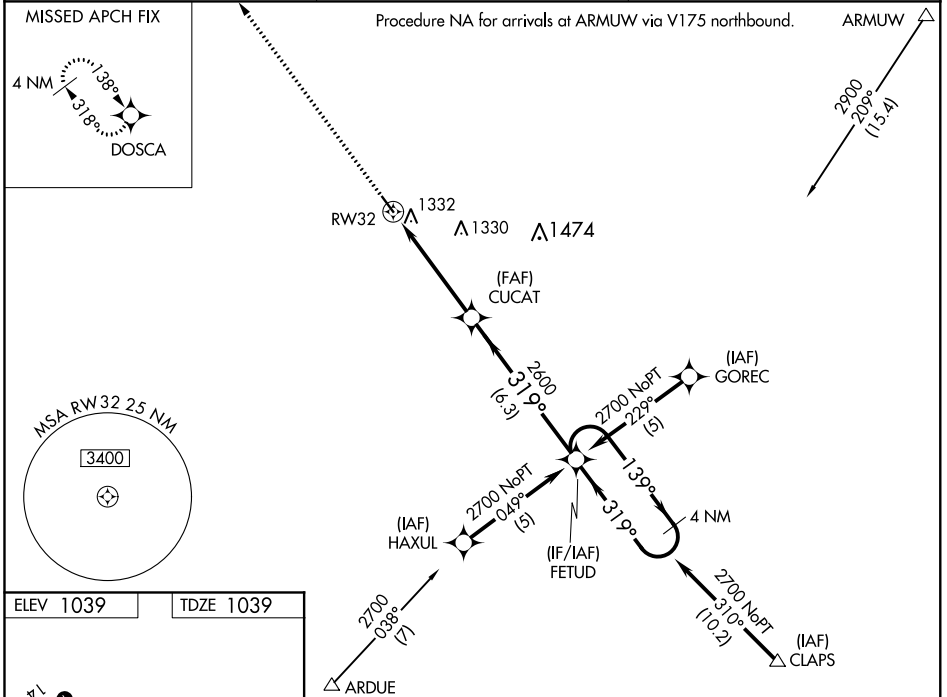
RNAV (GPS) RWY 32

BENSON MUNI (BBB)

⚠ For uncompensated Baro-VNAV systems, LNAV/VNAV NA below -17°C (2°F) or above 54°C (130°F).
⚠ DME/DME RNP-0.3 NA. Visibility reduction by helicopters NA.
 Baro-VNAV NA when using Appleton altimeter setting.
 When local altimeter setting not received, use Appleton altimeter setting and increase all DA and MDA 40 feet, increase Circling Cat B visibility ¼ mile.

MISSED APPROACH: Climb to 2700 direct DOSCA and hold.

AWOS-3 118.45	MINNEAPOLIS CENTER 125.5 323.1	UNICOM 122.8 (CTAF)
-------------------------	--	-------------------------------



CATEGORY	A	B	C	D
LPV DA	1426-1½	387 (400-1½)		NA
LNAV/VNAV DA	1710-2½	671 (700-2½)		NA
LNAV MDA	1700-1	661 (700-1)		NA
CIRCLING	1740-1	701 (800-1)		NA

NC-1, 01 MAR 2018 to 29 MAR 2018

NC-1, 01 MAR 2018 to 29 MAR 2018