

LOC/DME I-AXH <b>108.9</b> Chan <b>26</b>	APP CRS <b>089°</b>	Rwy Idg <b>5002</b> TDZE <b>69</b> Apt Elev <b>69</b>
---	------------------------	---

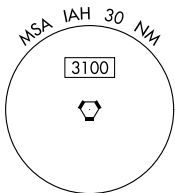
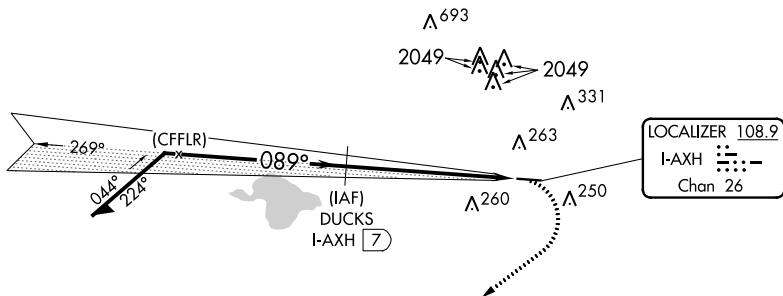
# LOC RWY 9

HOUSTON/SOUTHWEST (AXH)

RNAV 1-GPS.  
 ▼  
 ▲ NA Rwy 9 helicopter visibility reduction below ¾ SM NA.

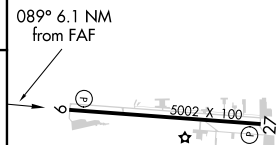
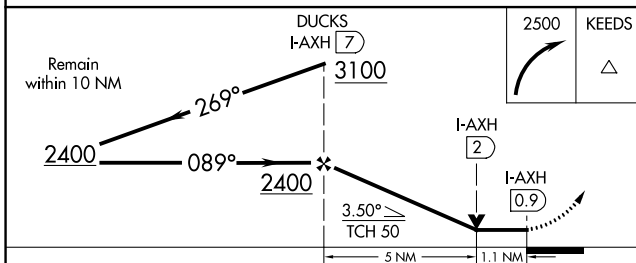
MISSED APPROACH: Climbing right turn to 2500 direct KEEDS.

AWOS-3 <b>123.625</b>	HOUSTON APP CON <b>123.8 257.7</b>	CLNC DEL <b>120.8</b>	UNICOM <b>123.0 (CTAF) 0</b>
--------------------------	---------------------------------------	--------------------------	---------------------------------



▲ KEEDS

ELEV <b>69</b>	TDZE <b>69</b>
----------------	----------------



CATEGORY	A	B	C	D
S-LOC 9	540-1	471 (500-1)	540-1 <sup>3</sup> / <sub>8</sub> 471 (500-1 <sup>3</sup> / <sub>8</sub> )	NA
CIRCLING	580-1	511 (600-1)	700-1 <sup>3</sup> / <sub>4</sub> 631 (700-1 <sup>3</sup> / <sub>4</sub> )	NA

REIL Rwys 9 and 27 0  
 MIRL Rwy 9-27 0

SC-5, 11 AUG 2022 to 08 SEP 2022

SC-5, 11 AUG 2022 to 08 SEP 2022

WAAS CH <b>81903</b> <b>W27A</b>	APP CRS <b>269°</b>	Rwy Idg <b>5002</b> TDZE <b>67</b> Apt Elev <b>68</b>
--	------------------------	---

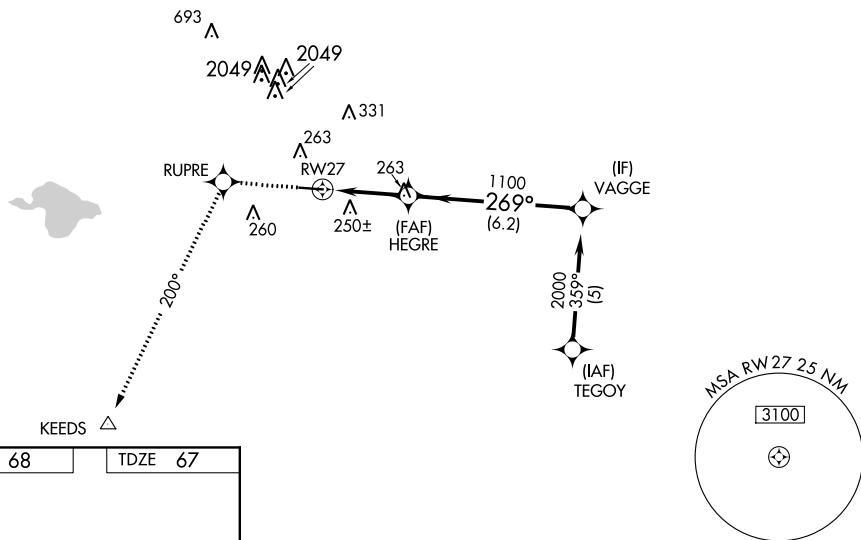
# RNAV (GPS) RWY 27

HOUSTON/SOUTHWEST (A.XH)

RNP APCH.	<p><b>⚠</b> For uncompensated Baro-VNAV systems, LNAV/VNAV NA below -1.5°C (5°F) or above 54°C (130°F). Rwy 27 helicopter visibility reduction below 3/4 SM NA. Obtain local altimeter setting on CTAF; when not received use William P. Hobby altimeter setting and increase all DAs/MDA's 40 feet, and LPV, LNAV Cat C visibility 1/4 mile. Baro-VNAV NA when using William P. Hobby altimeter setting.</p>	<p>MISSED APPROACH: Climb to 2700 direct RUPRE and via 200° track to KEEDS.</p>
-----------	---	---

AWOS-3 <b>123.625</b>	HOUSTON APP CON <b>123.8 257.7</b>	CLNC DEL <b>120.8</b>	UNICOM <b>123.0</b> (CTAF) <b>📻</b>
--------------------------	---------------------------------------	--------------------------	--

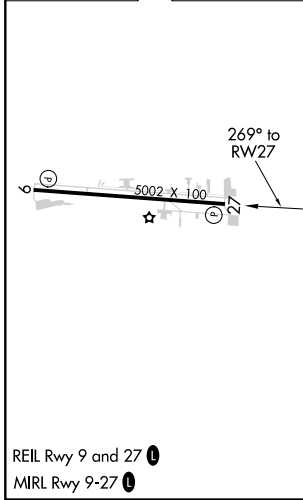
## RADAR REQUIRED



SC-5, 11 AUG 2022 to 08 SEP 2022

SC-5, 11 AUG 2022 to 08 SEP 2022

ELEV 68	TDZE 67
---------	---------



2700	RUPRE	tr 200°	KEEDS	VAGGE
	HEGRE		2000	
	RW27		1100	
	3.1 NM	6.2 NM		
CATEGORY	A	B	C	D
LPV DA		367-1 300 (300-1)		NA
LNAV/VNAV DA		604-2 537 (600-2)		NA
LNAV MDA	560-1	493 (500-1)	560-1 1/4 493 (500-1 1/4)	NA

REIL Rwy 9 and 27 **📻**  
MIRL Rwy 9-27 **📻**

HOUSTON, TEXAS  
Amdt 1A 07NOV19

29°30'N-95°29'W

# HOUSTON/SOUTHWEST (A.XH)

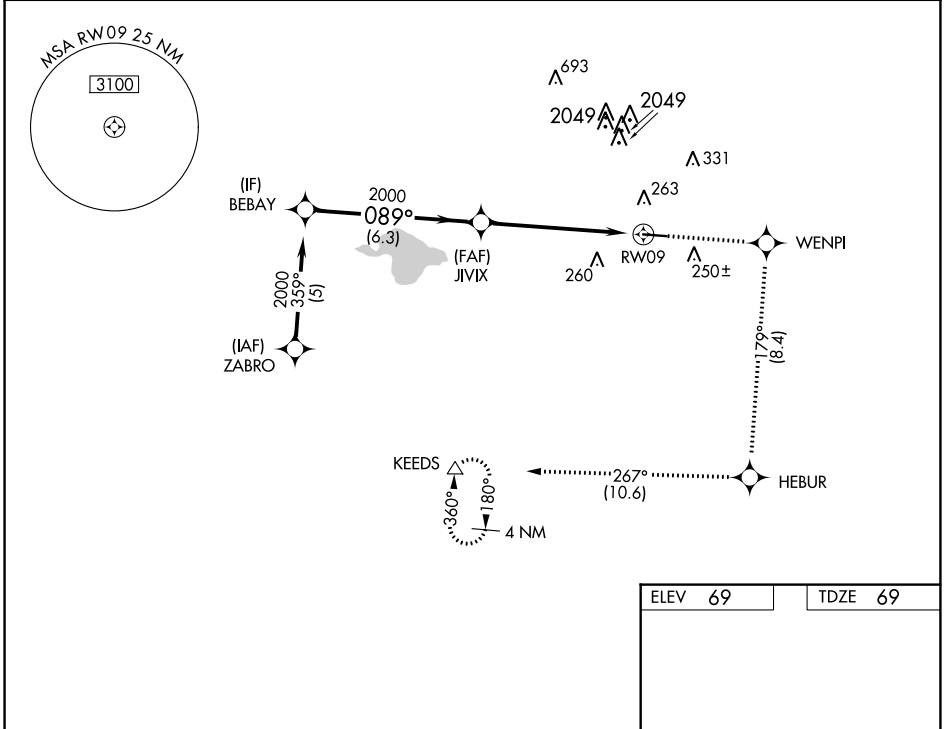
## RNAV (GPS) RWY 27

APP CRS	Rwy Idg	<b>5002</b>
<b>089°</b>	TDZE	<b>69</b>
	Apt Elev	<b>69</b>

# RNAV (GPS) RWY 9

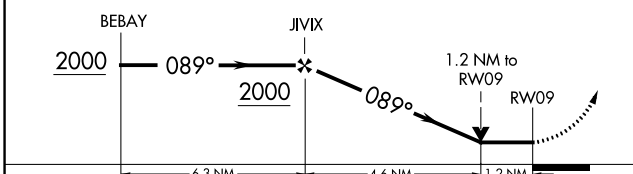
HOUSTON/SOUTHWEST (A.XH)

RNP APCH.		MISSED APPROACH: Climb to 2700 direct WENPI and on track 179° to HEBUR and on track 267° to KEEDS and hold.	
▼ Circling Rwy 27 NA at night. Rwy 9 helicopter visibility reduction below 3/4 SM NA.	AWOS-3 <b>123.625</b>	HOUSTON APP CON <b>123.8 257.7</b>	CLNC DEL <b>120.8</b>
			UNICOM <b>123.0 (CTAF) 0</b>

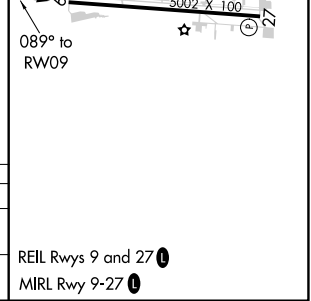


ELEV	69	TDZE	69
------	----	------	----

VGSI and descent angles not coincident (VGSI Angle 3.50/TCH 50).	2700	WENPI	tr 179°	HEBUR	tr 267°	KEEDS
--	------	-------	---------	-------	---------	-------



CATEGORY	A	B	C	D
LNNAV MDA	580-1	511 (600-1)	580-1½ 511 (600-1½)	NA
CIRCLING	620-1	551 (600-1)	700-1¾ 631 (700-1¾)	NA



SC-5, 11 AUG 2022 to 08 SEP 2022

SC-5, 11 AUG 2022 to 08 SEP 2022