

WAAS CH 58324 W12A	APP CRS 138°	Rwy Idg TDZE Apt Elev	6901 2022 2032
--	------------------------	-----------------------------	---

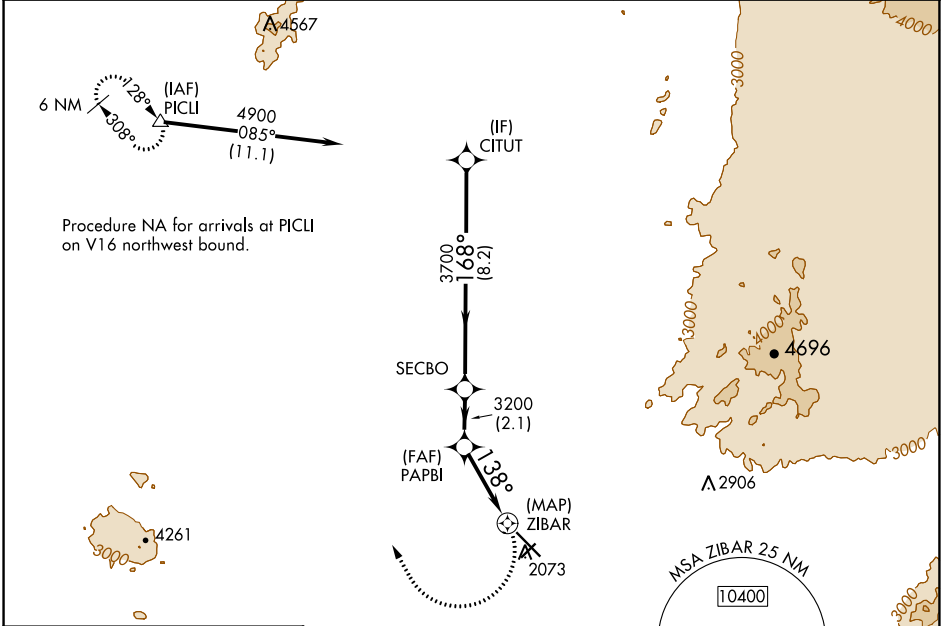
RNAV (GPS) RWY 12

MARANA RGNL (AVQ)

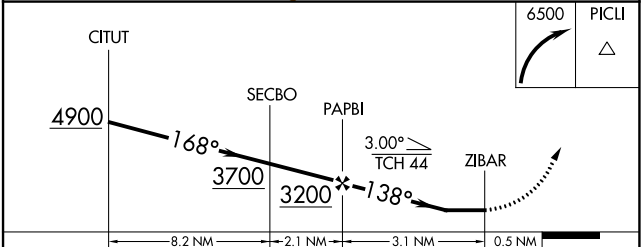
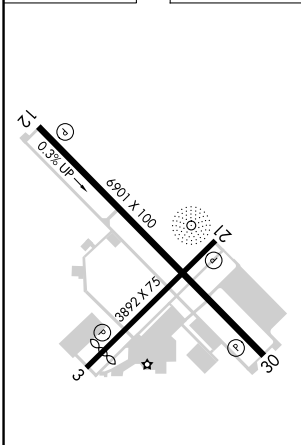
NA DME/DME RNP-0.3 NA. When local altimeter setting not received, use Ryan Fld altimeter setting and increase all MDA 100 feet, increase LP and LNAV Cat C visibility $\frac{1}{4}$ SM and Circling Cat C visibility $\frac{1}{2}$ SM.

MISSED APPROACH: Climbing right turn to 6500 direct PICLI and hold, continue climb-in-hold to 6500.

AWOS-3 118.375	TUCSON APP CON 119.4 318.1	UNICOM 123.0 (CTAF) 0
--------------------------	--------------------------------------	---------------------------------



ELEV 2032	TDZE 2022
-----------	-----------



CATEGORY	A	B	C	D
LP MDA	2420-1	398 (400-1)	2420-1 $\frac{1}{8}$ 398 (400-1 $\frac{1}{8}$)	NA
LNAV MDA	2440-1	418 (500-1)	2440-1 $\frac{1}{4}$ 418 (500-1 $\frac{1}{4}$)	NA
CIRCLING	2440-1 408 (500-1)	2540-1 508 (600-1)	2680-1 $\frac{3}{4}$ 648 (700-1 $\frac{3}{4}$)	NA

REIL Rwy 12 and 30
 MIRL Rwy 3-21 and 12-30

SW-4, 27 JAN 2022 to 24 FEB 2022

SW-4, 27 JAN 2022 to 24 FEB 2022

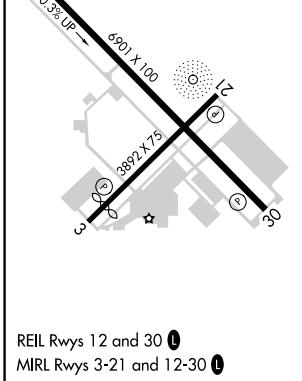
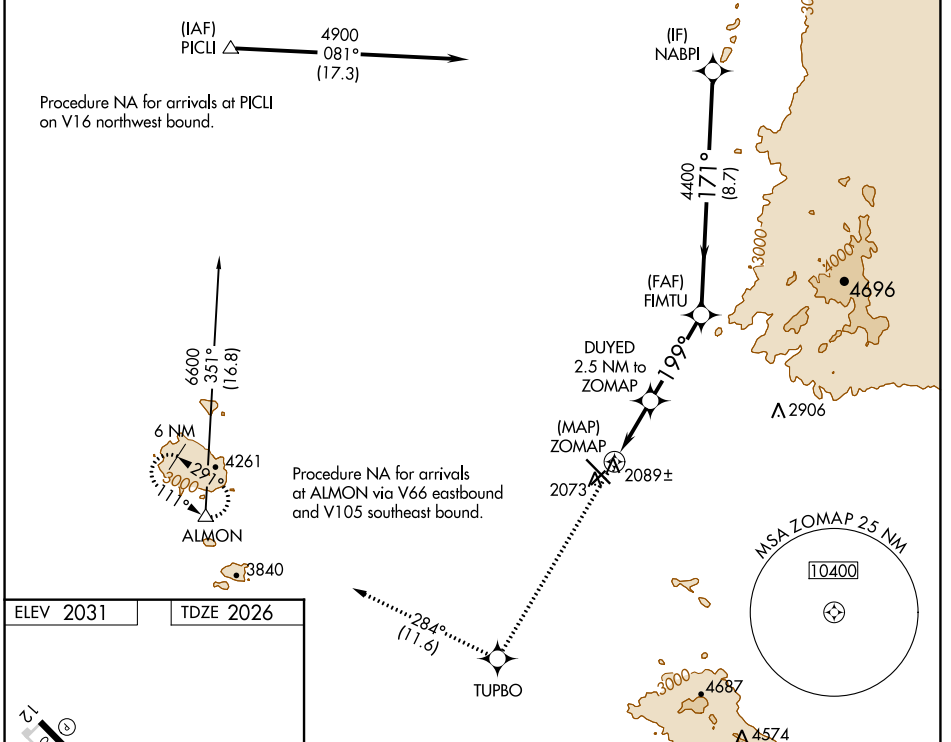
WAAS CH 56325 W21A	APP CRS 199°	Rwy Idg TDZE Apt Elev	3892 2026 2031
--	------------------------	-----------------------------	---

RNAV (GPS) RWY 21

MARANA RGNL (A/VQ)

RNP APCH.	<p>NA Rwy 21 helicopter visibility reduction below 1 SM NA. When local altimeter setting not received, use Ryan Fld altimeter setting and increase all MDAs 100 feet, increase LP Cat C visibility 1/8 SM and increase LNAV Cat C visibility 1/4 SM.</p>	<p>MISSED APPROACH: Climb to 6700 direct TUPBO and on track 284° to ALMON and hold, continue climb-in-hold 6700.</p>
-----------	---	---

AWOS-3 118.375	TUCSON APP CON 119.4 318.1	UNICOM 123.0 (CTAF)
--------------------------	--------------------------------------	-------------------------------



6700	TUPBO	tr 284°	ALMON	VGSI and descent angles not coincident (VGSI Angle 3.00/TCH 40).	NABPI																								
↑	✧		△																										
<table border="1"> <tr> <td>0.5</td> <td>2.5 NM</td> <td>3.6 NM</td> <td>8.7 NM</td> <td></td> <td></td> </tr> <tr> <td>CATEGORY</td> <td>A</td> <td>B</td> <td>C</td> <td>D</td> <td></td> </tr> <tr> <td>LP MDA</td> <td colspan="3">2340-1 314 (400-1)</td> <td>NA</td> <td></td> </tr> <tr> <td>LNAV MDA</td> <td>2640-1 614 (700-1)</td> <td colspan="2">2640-1 614 (700-1 1/4)</td> <td>NA</td> <td></td> </tr> </table>						0.5	2.5 NM	3.6 NM	8.7 NM			CATEGORY	A	B	C	D		LP MDA	2340-1 314 (400-1)			NA		LNAV MDA	2640-1 614 (700-1)	2640-1 614 (700-1 1/4)		NA	
0.5	2.5 NM	3.6 NM	8.7 NM																										
CATEGORY	A	B	C	D																									
LP MDA	2340-1 314 (400-1)			NA																									
LNAV MDA	2640-1 614 (700-1)	2640-1 614 (700-1 1/4)		NA																									

SW-4, 27 JAN 2022 to 24 FEB 2022

SW-4, 27 JAN 2022 to 24 FEB 2022

APP CRS	Rwy Idg	3398
033°	TDZE	2026
	Apt Elev	2032

RNAV (GPS) RWY 3

MARANA RGNL (AVQ)

RNP APCH.

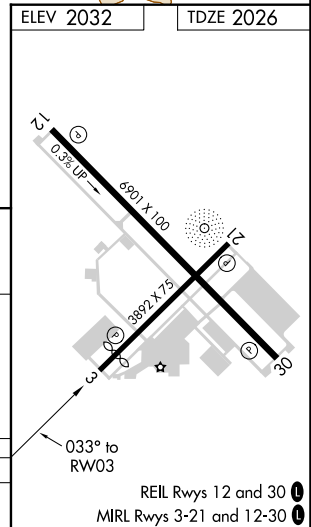
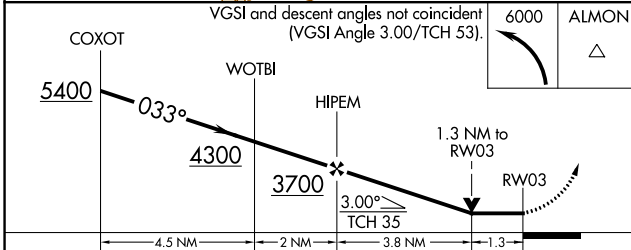
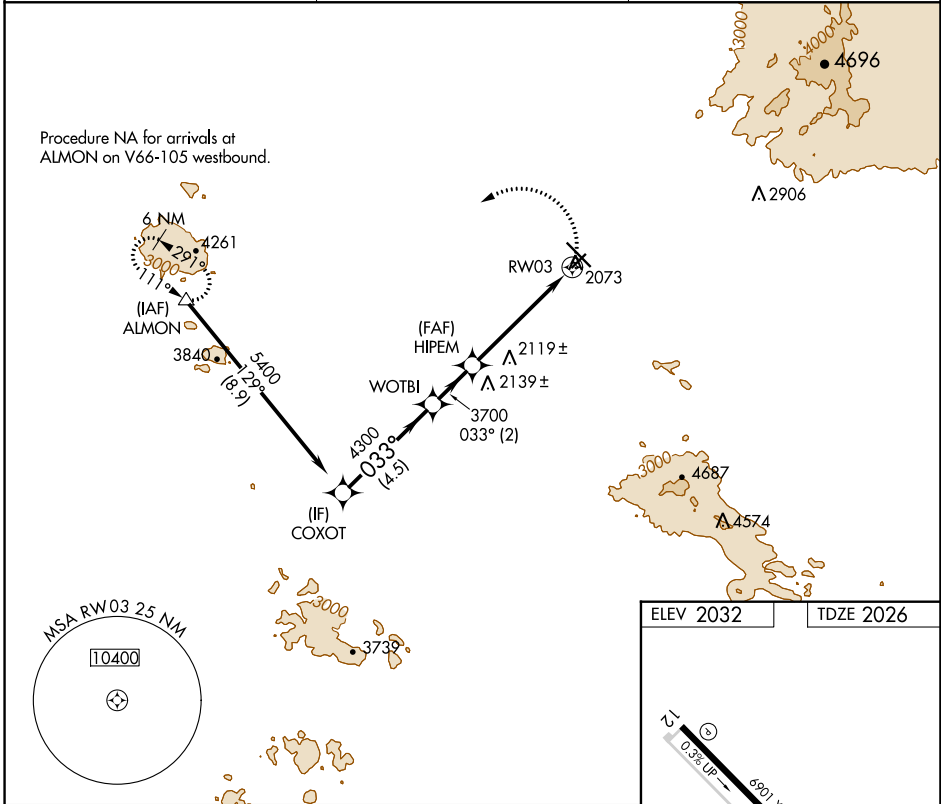
▼ VDP NA when using Ryan Fld altimeter setting. Rwy 3 helicopter visibility reduction below 3/4 SM NA. When local altimeter setting not received, use Ryan Field altimeter setting and increase all MDAs 100 feet and LNAV Cat C visibility 1/4 SM.

MISSED APPROACH: Climbing left turn to 6000 direct ALMON and hold, continue climb-in-hold to 6000.

AWOS-3
118.375

TUCSON APP CON
119.4 318.1

UNICOM
123.0 (CTAF) 0



CATEGORY	A	B	C	D
LNAV MDA	2480-1	454 (500-1)	2480-1 3/8 454 (500-1 1/8)	NA

SW-4, 27 JAN 2022 to 24 FEB 2022

SW-4, 27 JAN 2022 to 24 FEB 2022

APP CRS 282°	Rwy Idg TDZE Apt Elev	N/A N/A 2032
------------------------	-----------------------------	---------------------------

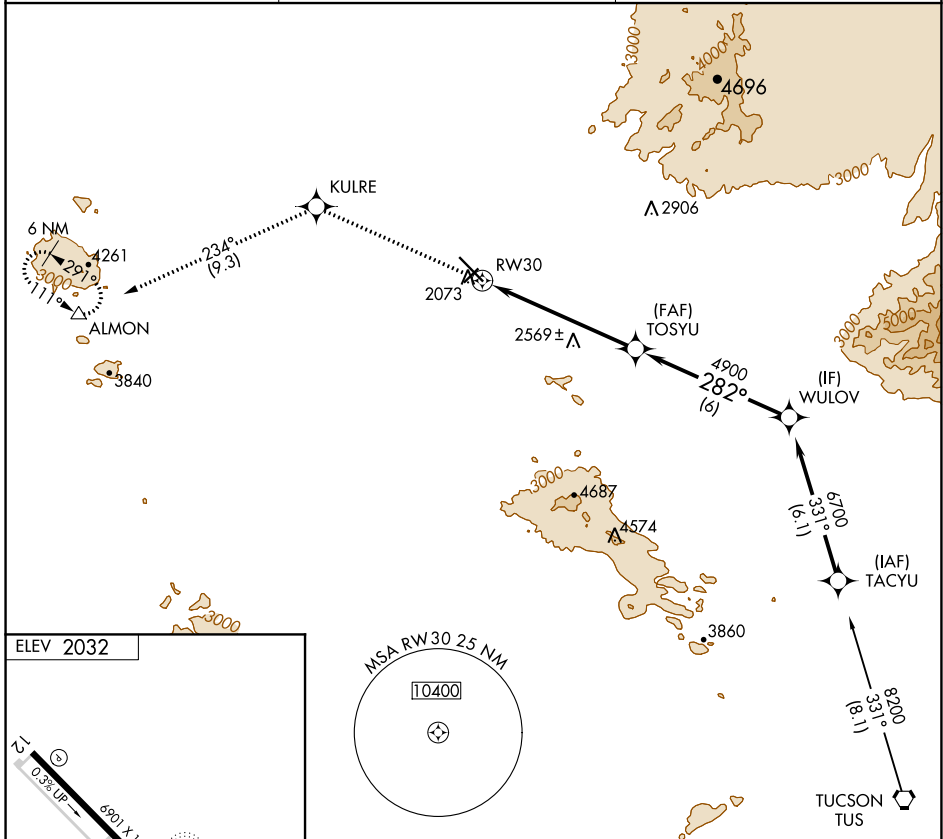
RNAV (GPS)-E

MARANA RGNL (AVQ)

▼ When local altimeter setting not received, use Ryan Fld altimeter setting and increase all MDAs 100 feet and increase Circling Cat A visibility ¼ SM and Cat C ½ SM. DME/DME RNP-0.3 NA.

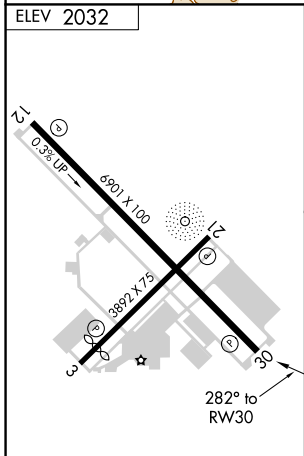
▲ MISSED APPROACH: Climb to 6000 direct KULRE and 234° track to ALMON and hold, continue climb-in-hold to 6000.

AWOS-3 118.375	TUCSON APP CON 119.4 318.1	UNICOM 123.0 (CTAF) 0
--------------------------	--------------------------------------	---------------------------------



SW-4, 27 JAN 2022 to 24 FEB 2022

SW-4, 27 JAN 2022 to 24 FEB 2022



REIL Rws 12 and 30 **0**
MIRL Rws 3-21 and 12-30 **0**

6000	KULRE	234° tr	ALMON	TOSYU	WULOV
	◆		△		
				4900	6700
				282°	
					Procedure Turn NA
				6 NM	6 NM
CATEGORY	A	B	C	D	
C CIRCLING	2820-1 788 (800-1)	2820-1¼ 788 (800-1¼)	2820-2¼ 788 (800-2¼)	NA	