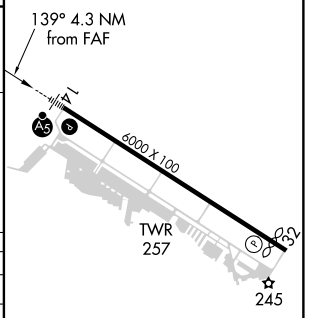
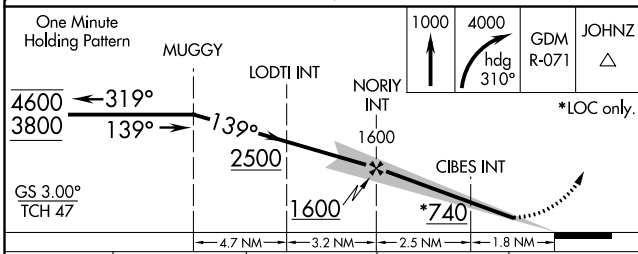
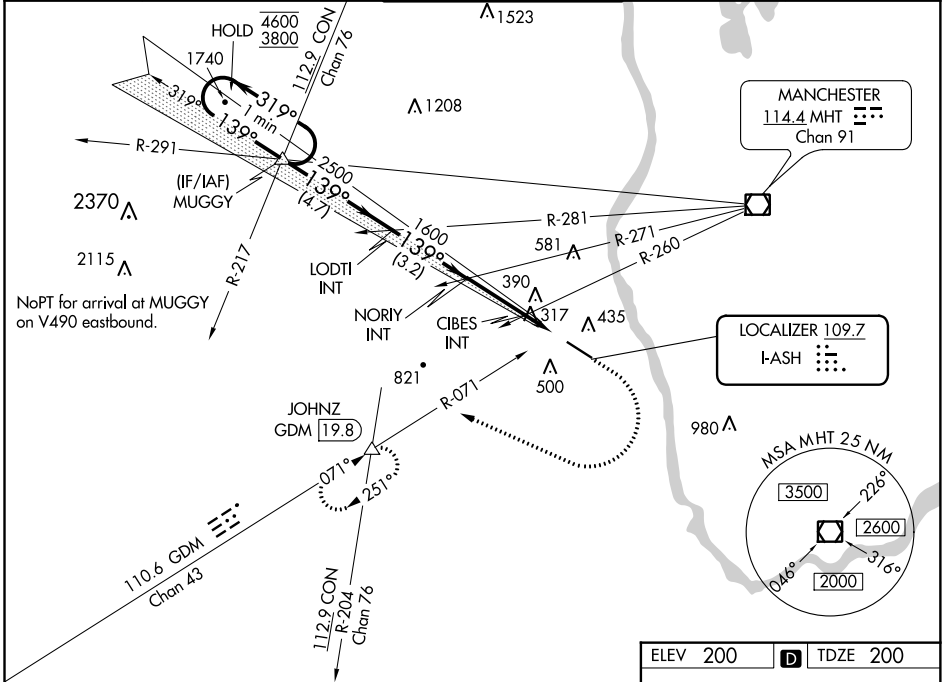


LOC I-ASH 109.7	APP CRS 139°	Rwy Idg TDZE Apt Elev	5650 200 200
---------------------------	------------------------	-----------------------------	---

ILS or LOC RWY 14

BOIRE FLD (ASH)

<p>For inop ALS, increase CIBES fix minimums S-LOC 14 Cat C/D visibility to 1 SM.</p>	<p>MALS R</p>	<p>MISSED APPROACH: Climb to 1000 then climbing right turn to 4000 on heading 310° and GDM R-071 to JOHNZ INT/GDM 19.8 DME and hold, continue climb-in-hold to 4000.</p>		
		<p>ATIS 125.1</p>	<p>BOSTON APP CON 124.9 269.075</p>	<p>NASHUA TOWER ★ 133.2 (CTAF) 0</p>



CATEGORY	A	B	C	D
S-ILS 14	400-1/2 200 (200-1/2)			
S-LOC 14	740-1/2	540 (600-1/2)	740-1	540 (600-1)
CIRCLING	820-1 620 (700-1)	840-1 640 (700-1)	900-2 700 (700-2)	1000-2 1/2 800 (800-2 1/2)
CIBES FIX MINIMUMS (DUAL VOR RECEIVERS REQUIRED)				
S-LOC 14	580-1/2	380 (400-1/2)	580-5/8	380 (400-5/8)
CIRCLING	820-1 620 (700-1)	840-1 640 (700-1)	900-2 700 (700-2)	1000-2 1/2 800 (800-2 1/2)

ELEV 200	TDZE 200
HIRL Rwy 14-32	
REIL Rwy 32	
FAF to MAP 4.3 NM	
Knots	60 90 120 150 180
Min:Sec	4:18 2:52 2:09 1:43 1:26

NE-1, 27 JAN 2022 to 24 FEB 2022

NE-1, 27 JAN 2022 to 24 FEB 2022


WAAS CH 97730 W14A	APP CRS 139°	Rwy Idg TDZE Apt Elev	5650 200 200
---------------------------------	------------------------	-----------------------------	---

RNAV (GPS) RWY 14

BOIRE FLD (ASH)

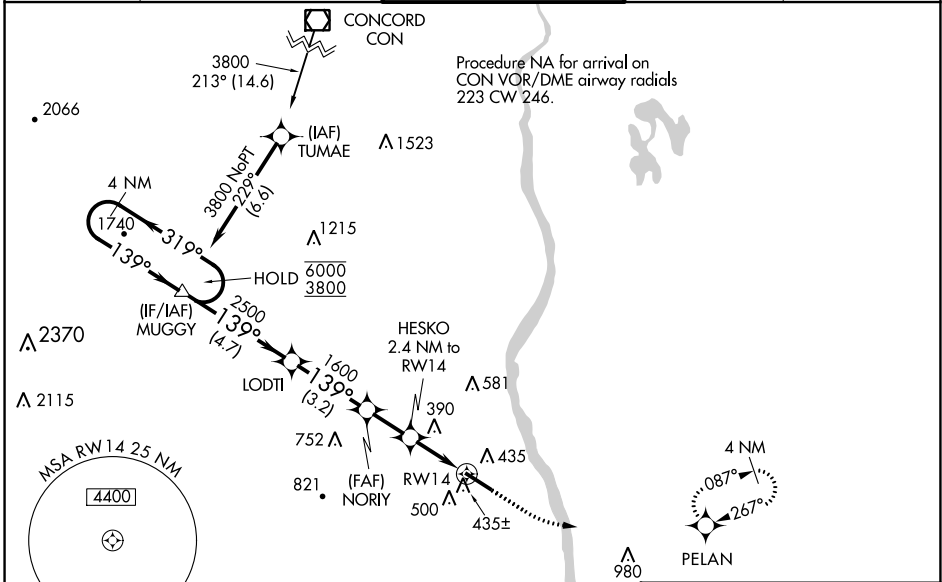
RNP APCH.

⚠ For uncompensated Baro-VNAV systems, LNAV/VNAV NA below -15°C or above 54°C. For inop ALS, increase LNAV Cat C/D visibility to 1½ SM.

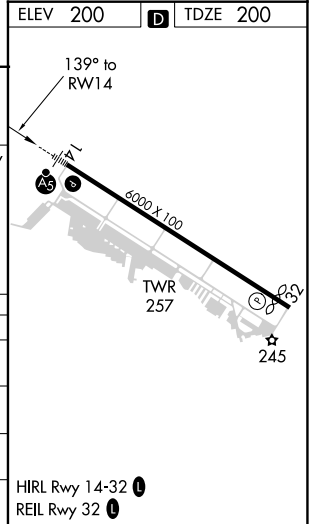
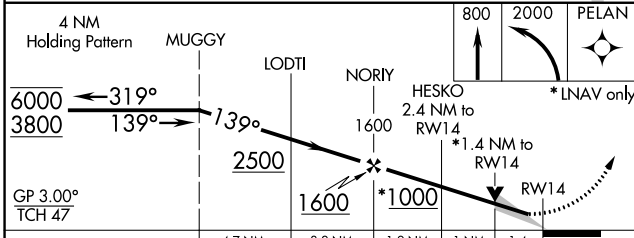
MALSR 

MISSED APPROACH:
Climb to 800 then
climbing left turn to
2000 direct PELAN
and hold.

ATIS 125.1	BOSTON APP CON 124.9 269.075	NASHUA TOWER * 133.2 (CTAF) 0	GND CON 121.8	CLNC DEL 121.8
----------------------	--	---	-------------------------	--------------------------



ELEV 200	TDZE 200
----------	----------



CATEGORY	A	B	C	D
LPV DA		400-½	200 (200-½)	
LNAV/VNAV DA		596-⅝	396 (400-⅝)	
LNAV MDA	700-½	500 (500-½)	700-1	500 (500-1)
CIRCLING	820-1	840-1	900-2	1000-2½
	620 (700-1)	640 (700-1)	700 (700-2)	800 (800-2½)

NE-1, 27 JAN 2022 to 24 FEB 2022

NE-1, 27 JAN 2022 to 24 FEB 2022

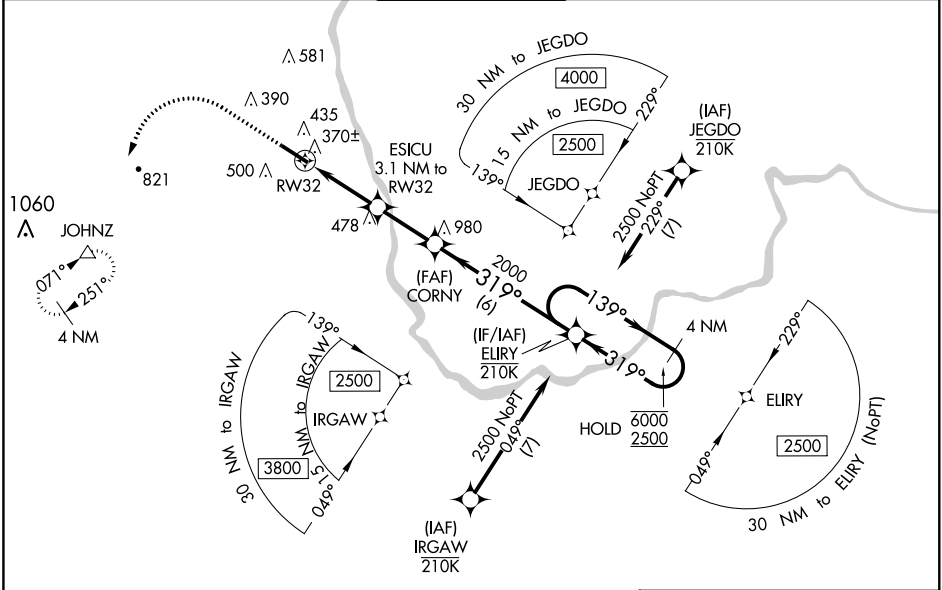
WAAS CH 73030 W32A	APP CRS 319°	Rwy Idg TDZE Apt Elev	5650 193 200
--	------------------------	-----------------------------	---

RNAV (GPS) RWY 32

BOIRE FLD (ASH)

RNP APCH.	MISSED APPROACH: Climb to 800 then climbing left turn to 4000 direct JOHNZ and hold, continue climb-in-hold to 4000.			
▼ ▲ Rwy 32 helicopter visibility reduction below 3/4 SM NA. For uncompensated Baro-VNAV systems, LNAV/VNAV NA below -1.5°C or above 54°C.				

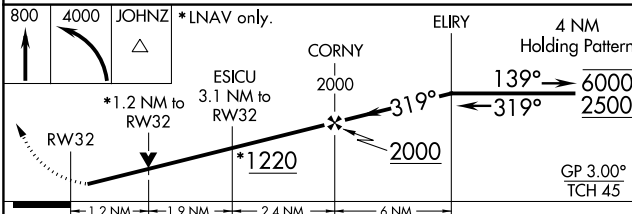
ATIS 125.1	BOSTON APP CON 124.9 269.075	NASHUA TOWER ★ 133.2 (CTAF) 1	GND CON 121.8	CLNC DEL 121.8
----------------------	--	---	-------------------------	--------------------------



NE-1, 27 JAN 2022 to 24 FEB 2022

NE-1, 27 JAN 2022 to 24 FEB 2022

ELEV 200	D	TDZE 193
----------	---	----------



CATEGORY	A	B	C	D
LPV DA		477-7/8	284 (300-7/8)	
LNAV/VNAV DA		633-1 1/4	440 (500-1 1/4)	
LNAV MDA	620-1	427 (500-1)	620-1 1/4	427 (500-1 1/4)
C CIRCLING	820-1 620 (700-1)	840-1 640 (700-1)	900-2 700 (700-2)	1000-2 1/2 800 (800-2 1/2)

