

WAAS CH 69418 W25A	APP CRS 247°	Rwy Idg TDZE Apt Elev	3434 8 9
--	------------------------	-----------------------------	-------------------------------------

RNAV (GPS) RWY 25

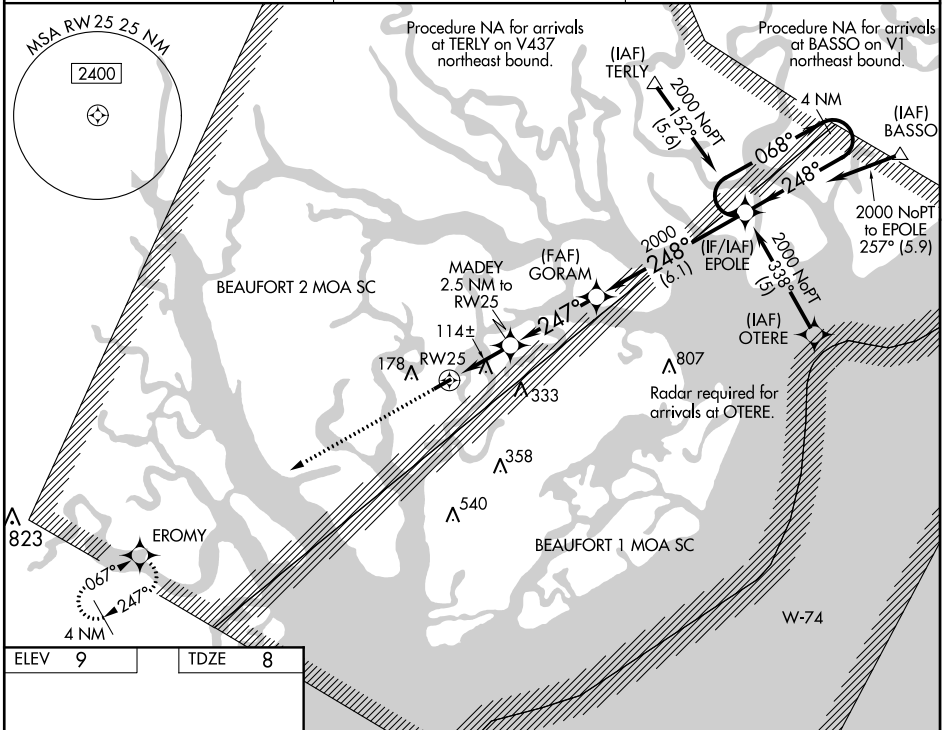
BEAUFORT COUNTY (A.R.W)

▲ For uncompensated Baro-VNAV systems, LNAV/VNAV NA below -15°C (5°F) or above 54°C (130°F). DME/DME RNP-0.3 NA. When local altimeter setting not received, use Beaufort MCAS/Merritt Field altimeter setting and increase LPV DA to 226, LNAV/VNAV DA to 352, and all MDA 20 feet. VDP and Baro-VNAV NA when using Beaufort MCAS/Merritt Field altimeter setting.

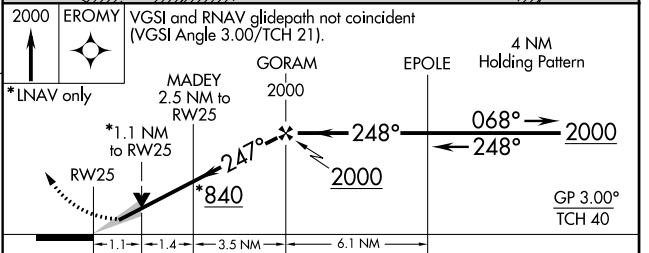
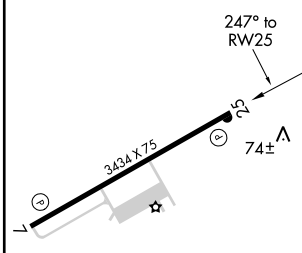
▲ **ASR**

MISSED APPROACH:
Climb to 2000 direct EROMY and hold.

AWOS-3 119.675	BEAUFORT APP CON* 125.125 292.125	UNICOM 122.7 (CTAF) 0
--------------------------	---	---------------------------------



ELEV 9	TDZE 8
---------------	---------------



CATEGORY	A	B	C	D
LPV DA		208-1	200 (200-1)	NA
LNAV/VNAV DA		334-1¼	326 (400-1¼)	NA
LNAV MDA		380-1	372 (400-1)	NA
CIRCLING	480-1	471 (500-1)	480-1½ 471 (500-1½)	NA

REIL Rwy 25
MIRL Rwy 7-25 0

SE-2: 04 JAN 2018 to 01 FEB 2018

SE-2: 04 JAN 2018 to 01 FEB 2018

APP CRS	Rwy Idg	3434
067°	TDZE	9
	Apt Elev	9

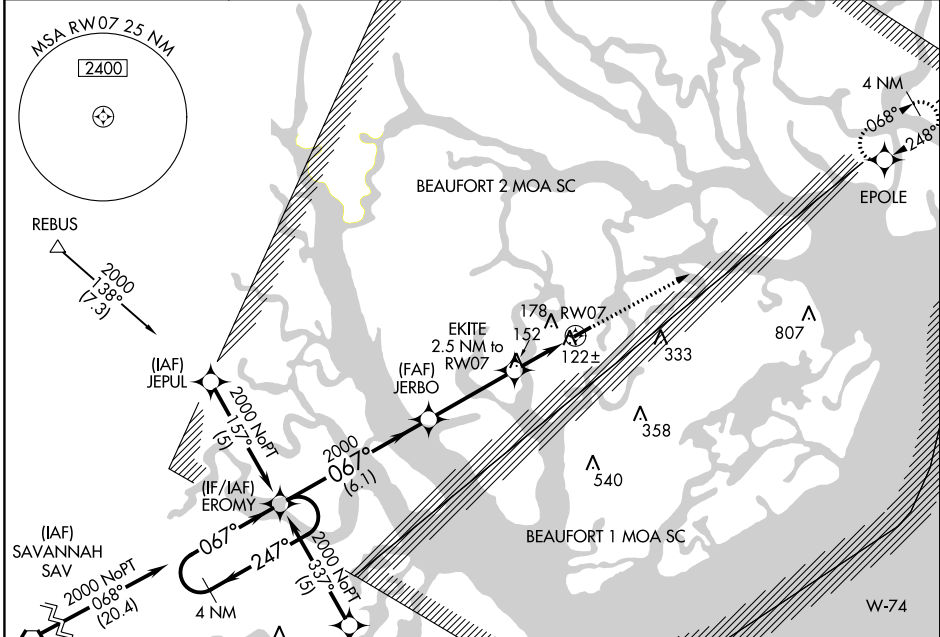
RNAV (GPS) RWY 7

BEAUFORT COUNTY (A.R.W)

▼ DME/DME RNP-0.3 NA. Helicopter visibility reduction below 3/4 SM NA. When local altimeter setting not received, use Beaufort MCAS altimeter setting and increase
▲ ASR all MDA 20 feet.

MISSED APPROACH: Climb to 2000 direct EPOLE and hold.

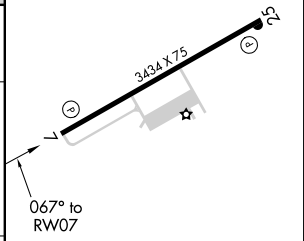
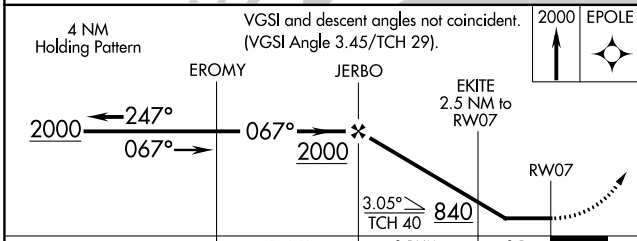
AWOS-3 119.675	BEAUFORT APP CON ★ 125.125 292.125	CLNC DEL 121.725	UNICOM 122.7 (CTAF) 0
--------------------------	--	----------------------------	---------------------------------



Procedure NA for arrivals at SAV VORTAC on V437 southwest bound.

Radar required for arrivals at LFKO.

ELEV 9	TDZE 9
--------	--------



CATEGORY	A	B	C	D
LNVA MDA	380-1	371 (400-1)		NA
CIRCLING	480-1	471 (500-1)	480-1½ 471 (500-1½)	NA

REIL Rwy 25
MIRL Rwy 7-25 0

SE-2: 04 JAN 2018 to 01 FEB 2018

SE-2: 04 JAN 2018 to 01 FEB 2018