

WAAS CH 61120 W24A	APP CRS 240°	Rwy Idg TDZE Apf Elev	3505 831 839
--	------------------------	-----------------------------	---

RNAV (GPS) RWY 24

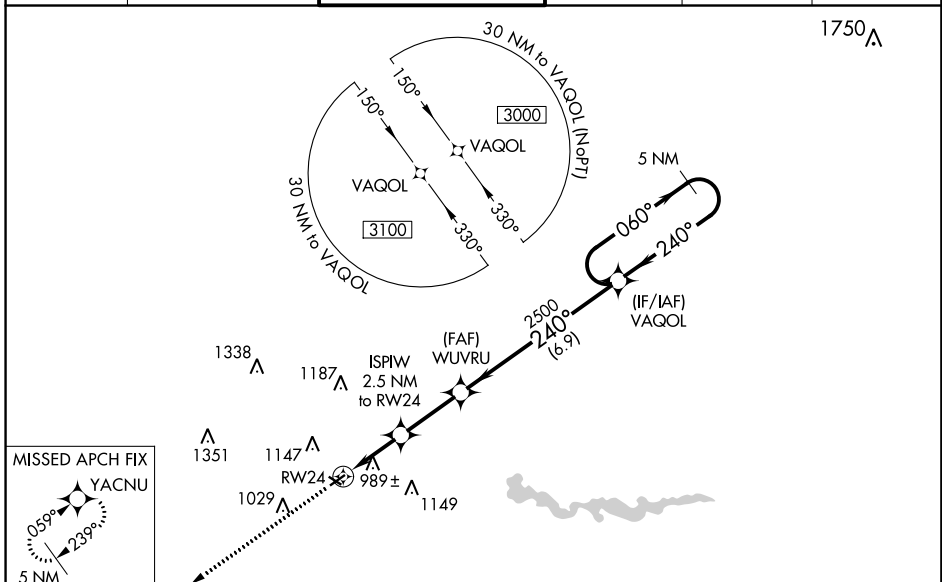
ANN ARBOR MUNI (A.R.B)

RNP APCH.

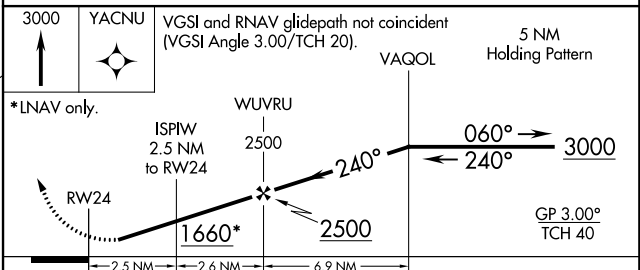
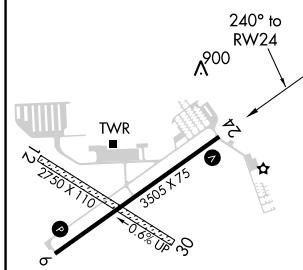
⚠ For uncompensated Baro-VNAV systems, LNAV/VNAV NA below -16°C or above 38°C. Baro-VNAV NA when using Willow Run altimeter setting. Rwy 24 helicopter visibility reduction below 3/4 SM NA. When local altimeter setting not received, use Willow Run altimeter setting and increase all DA/MDA 40 feet.

MISSED APPROACH: Climb to 3000 direct YACNU and hold.

ATIS 134.55	DETROIT APP CON 118.95 284.0	ANN ARBOR TOWER ★ 120.3 (CTAF) 0	GND CON 121.6	CLNC DEL 121.6	UNICOM 123.0
-----------------------	--	---	-------------------------	--------------------------	------------------------



ELEV 839	TDZE 831
----------	----------



CATEGORY	A	B	C	D
LPV DA	1081-1 250 (300-1)			
LNAV/VNAV DA	1155-1 324 (400-1)			
LNAV MDA	1300-1 469 (500-1)		1300-1¼ 469 (500-1¼)	

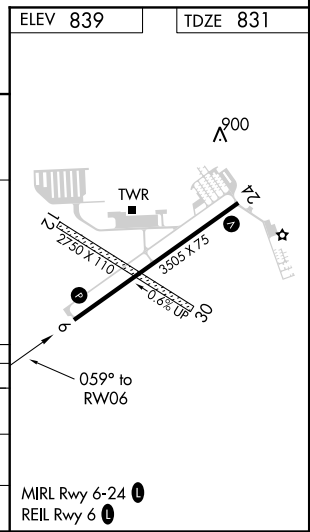
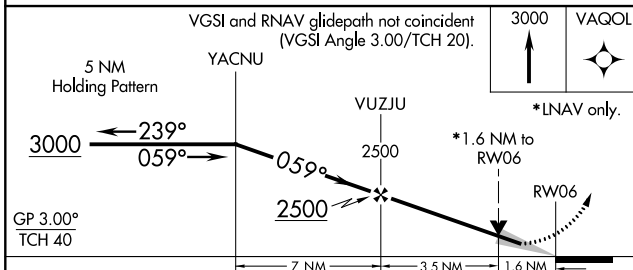
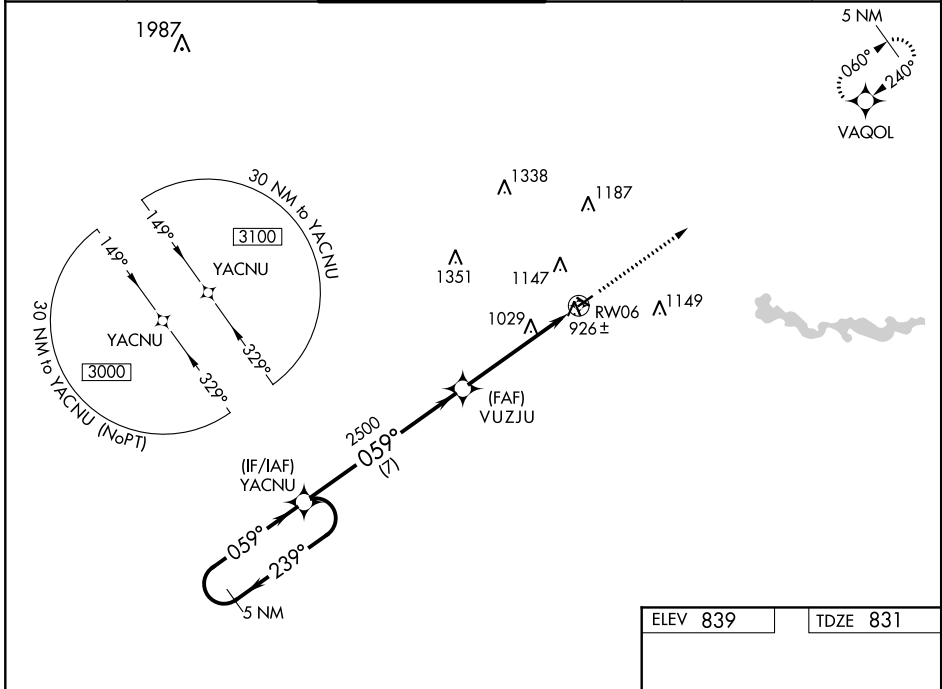
WAAS CH 77601 W06A	APP CRS 059°	Rwy Idg TDZE Apt Elev	3505 831 839
--	------------------------	-----------------------------	---

RNAV (GPS) RWY 6

ANN ARBOR MUNI (ARB)

RNP APCH.		<p>▼ For uncompensated Baro-VNAV systems, LNAV/VNAV NA below -16°C or above 38°C. VDP and Baro-VNAV NA when using Willow Run altimeter setting. When local altimeter setting not received, use Willow Run altimeter setting and increase all DA/MDA 40 feet; increase LNAV Cats C and D visibility 1/8 SM.</p>		<p>MISSED APPROACH: Climb to 3000 direct VAQOL and hold.</p>	
-----------	--	--	--	--	--

ATIS 134.55	DETROIT APP CON 118.95 284.0	ANN ARBOR TOWER * 120.3 (CTAF) 0	GND CON 121.6	CLNC DEL 121.6	UNICOM 123.0
-----------------------	--	--	-------------------------	--------------------------	------------------------



CATEGORY	A	B	C	D
LPV DA	1081-1 250 (300-1)			
LNAV/VNAV DA	1097-1 266 (300-1)			
LNAV MDA	1360-1	529 (600-1)	1360-1½	529 (600-1½)

EC-1, 26 MAR 2020 to 23 APR 2020

EC-1, 26 MAR 2020 to 23 APR 2020

VORTAC SVM 114.3 Chan 90	APP CRS 213°	Rwy Idg TDZE Apt Elev	3505 831 839
--	------------------------	-----------------------------	---

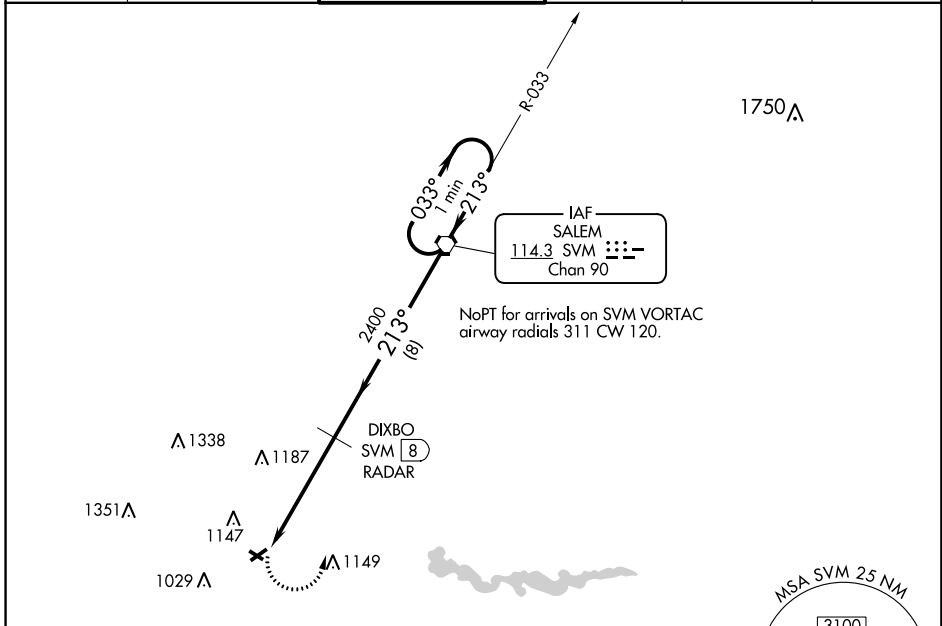
VOR RWY 24

ANN ARBOR MUNI (A.R.B.)

⚠ Inop table does not apply. Rwy 24 helicopter visibility reduction below 3/4 SM NA.
 ⚠ When local altimeter setting not received, use Willow Run altimeter setting and increase all MDAs 40 feet and increase visibility S-24 Cat C/D visibility 1/8 SM and Circling Cat C/D visibility 1/4 SM. Circling NA to Rwy 12 and 30.

MISSED APPROACH: Climbing left turn to 3000 direct SVM VORTAC and hold.

ATIS 134.55	DETROIT APP CON 118.95 284.0	ANN ARBOR TOWER ★ 120.3 (CTAF) 0	GND CON 121.6	CLNC DEL 121.6	UNICOM 123.0
-----------------------	--	--	-------------------------	--------------------------	------------------------



ELEV 839	TDZE 831
213° 4.7 NM from FAF	
MIRL Rwy 6-24 0	
REIL Rwy 6 0	
FAF to MAP 4.7 NM	
Knots	60 90 120 150 180
Min:Sec	4:42 3:08 2:21 1:53 1:34

DME or RADAR REQUIRED

3000	SVM	VGSI and descent angles not coincident (VGSI Angle 3.00/TCH 20).	One Minute Holding Pattern	
		DIXBO SVM RADAR	SVM VORTAC	
		SVM 12.7	033° → 2700	
		≤ 3.02° TCH 55	← 213°	
4.7 NM		8 NM		
CATEGORY	A	B	C	D
S-24	1460-1	629 (700-1)	1460-1 ^{3/4} 629 (700-1 ^{3/4})	1460-1 ^{3/4} 629 (700-1 ^{3/4})
CIRCLING	1500-1	661 (700-1)	1500-1 ^{3/4} 661 (700-1 ^{3/4})	1500-2 661 (700-2)

EC-1, 26 MAR 2020 to 23 APR 2020

EC-1, 26 MAR 2020 to 23 APR 2020

VORTAC SVM 114.3 Chan 90	APP CRS 035°	Rwy Idg TDZE Apt Elev	3505 831 839
--	------------------------	-----------------------------	---

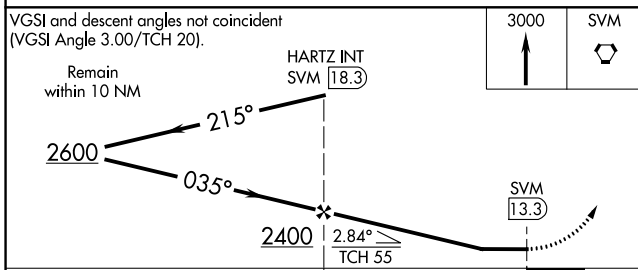
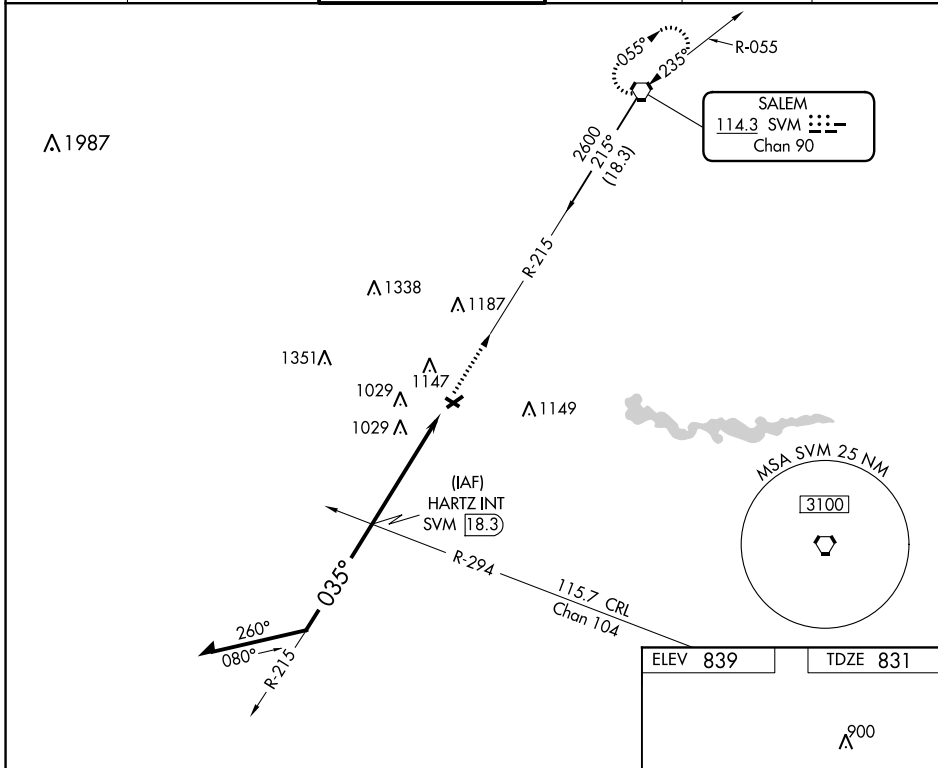
VOR RWY 6

ANN ARBOR MUNI (A.R.B)

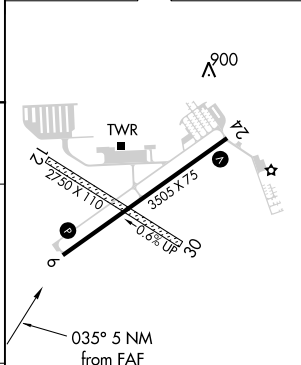
▼ When local altimeter setting not received, use Willow Run altimeter setting and increase all MDA 40 feet and Cat C/D visibility 1/8 mile and Circling Cat C/D visibility 1/4 mile.
 ▲ Rwy 6 helicopter visibility reduction below 3/4 SM NA. Circling NA to Rwy 12 and 30.

MISSED APPROACH: Climb to 3000 direct SVM VORTAC and hold.

ATIS 134.55	DETROIT APP CON 118.95 284.0	ANN ARBOR TOWER ★ 120.3 (CTAF) 0	GND CON 121.6	CLNC DEL 121.6	UNICOM 123.0
-----------------------	--	--	-------------------------	--------------------------	------------------------



ELEV 839	TDZE 831
----------	----------



CATEGORY	A	B	C	D
S-6	1360-1 529 (600-1)		1360-1½ 529 (600-1½)	
CIRCLING	1500-1 661 (700-1)		1500-1¾ 661 (700-1¾)	1500-2 661 (700-2)

REIL Rwy 6 0					
MIRL Rwy 6-24 0					
FAF to MAP 5 NM					
Knots	60	90	120	150	180
Min:Sec	5:00	3:20	2:30	2:00	1:40

EC-1, 26 MAR 2020 to 23 APR 2020

EC-1, 26 MAR 2020 to 23 APR 2020